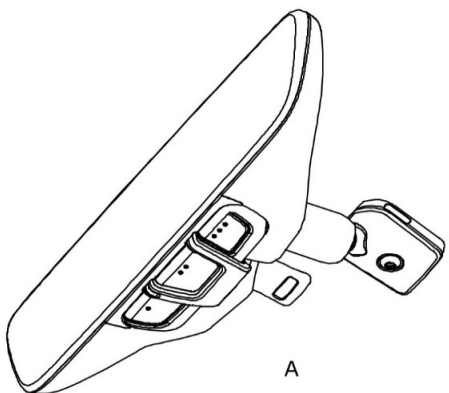




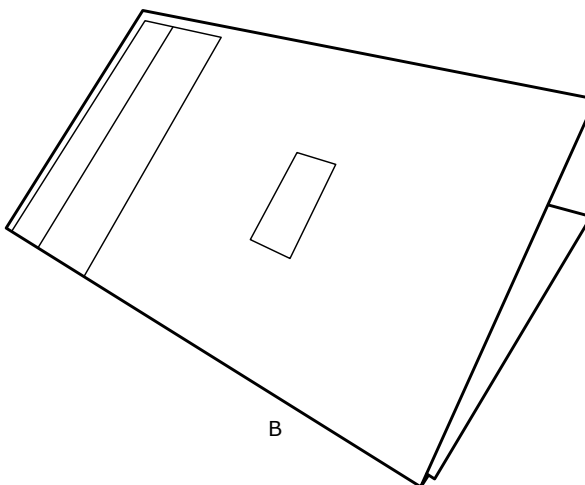
GENUINE PARTS

INSTALLATION INSTRUCTIONS

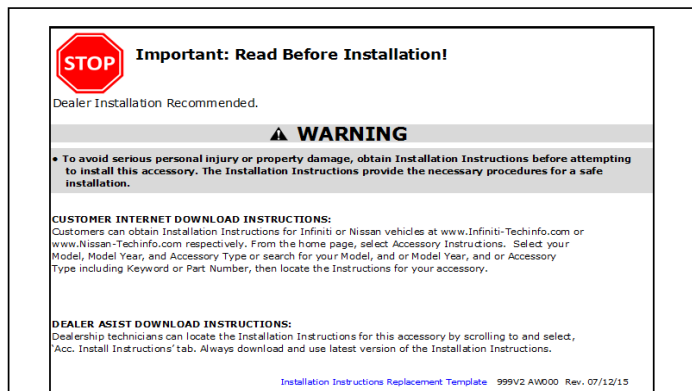
DESCRIPTION:	Frameless Prism Mirror With UGDO (ARQ)
APPLICATION:	Rogue Sport, Rogue, Leaf, Altima, Versa, Versa Note, Sentra, Juke, Quest, Frontier, NV Passenger, Kicks
PART NUMBER(S) REQUIRED FOR INSTALLATION:	999L1 V5100 and 999L1 V5110 - Frameless Prism mirror with UGDO (ARQ)
KIT CONTENTS:	



A



B



C

PART NUMBER(S) **999L1 V5100 and 999L1 V5110**
REQUIRED FOR
INSTALLATION:

KIT CONTENTS:

Item	Qty.	Part Description	Service Part Number
A	1	Frameless Prism Mirror W/UGDO (ARQ)	999L1 V5101
		• UGDO Module	999S3 V5110
		• UGDO Clip	999S3 V5111
B	1	User Guide	Not Applicable
C	1	Installation Instruction website Address	

TOOLS REQUIRED:

- 3mm Flat Screw Driver
- Nylon Trim Removal Tool
- Screwdriver, Torx T-20

INSTALLATION CAUTIONS:

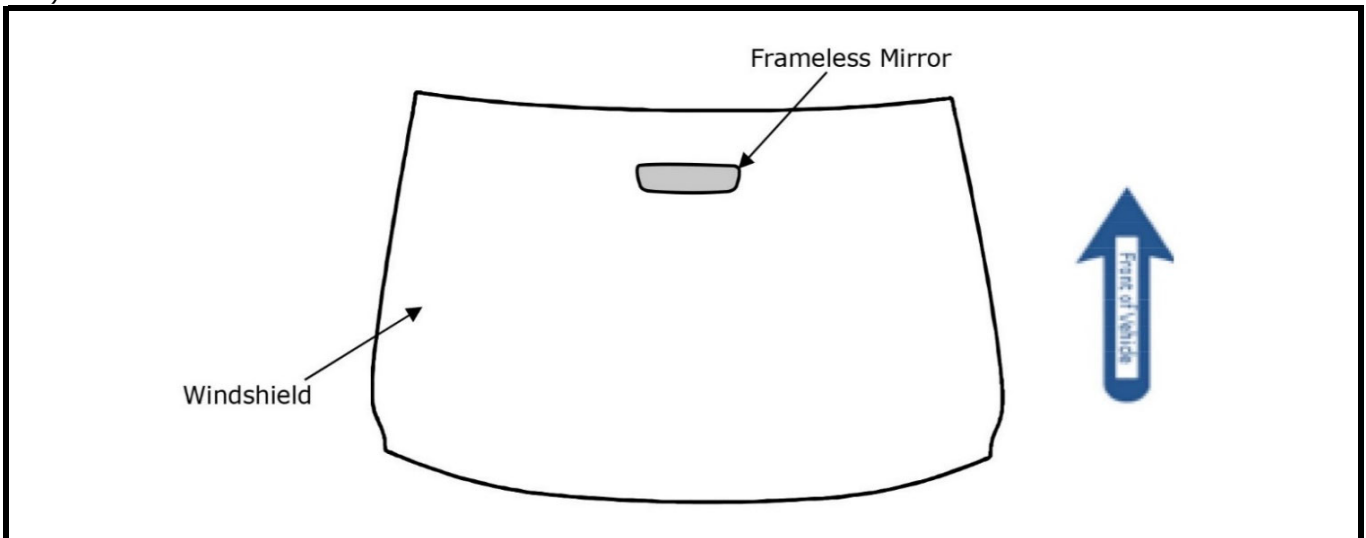


CAUTION

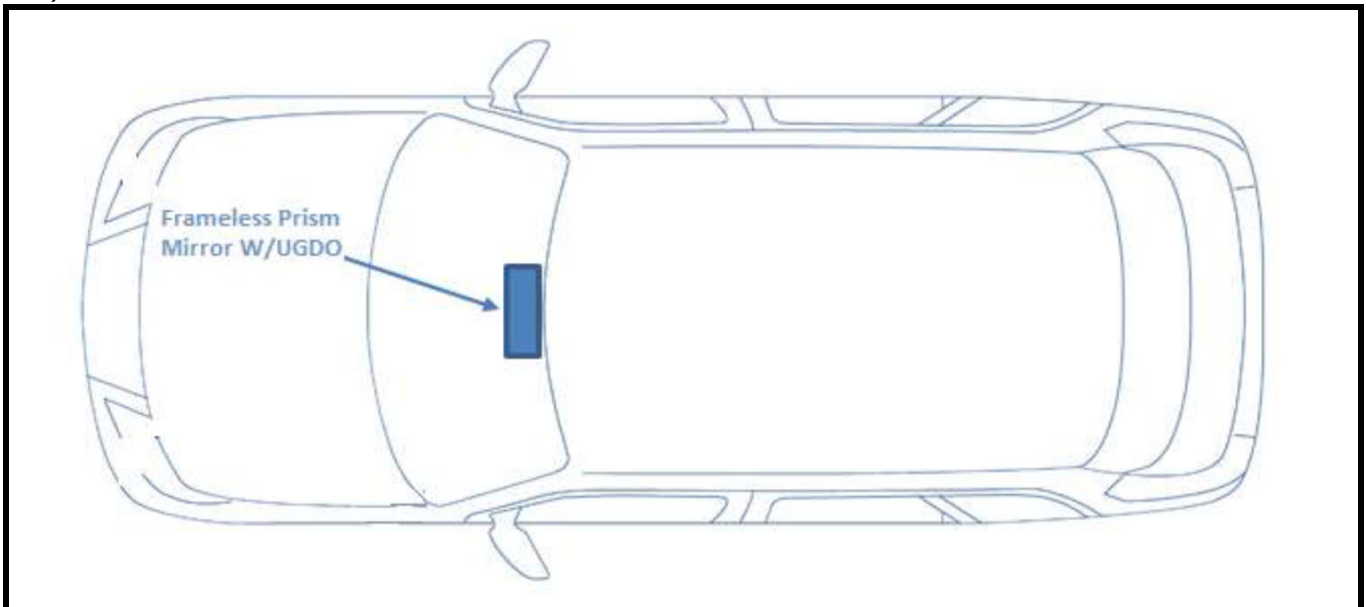
- Dealer installation recommended. Instructions may refer to Service Manual.
- Please read this instruction carefully before installing this product for correct installation.
- Please **DO NOT** use or install the part in ways other than what is described.
- Always use floor, seat and steering wheel protection.
- Apply masking tape as needed to protect areas that may be scratched or damaged by tools.
- Always remove vehicle parts in the sequence directed. Improper procedure can damage parts.
- Take care not to scratch or damage any component during the removal or re-installation process.
- Trim pieces found to have witness marks or broken clips **ARE NOT** to be reinstalled.
- Store removed parts in a safe manner.
- If a problem occurs during installation, please contact Nissan dealer where you purchased the product.

SECTION 1 - OVERVIEW

1.1) SYSTEM



1.2) VEHICLE

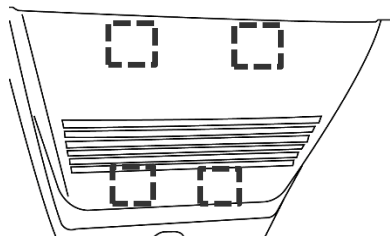


SECTION 2 - VEHICLE PREPARATION



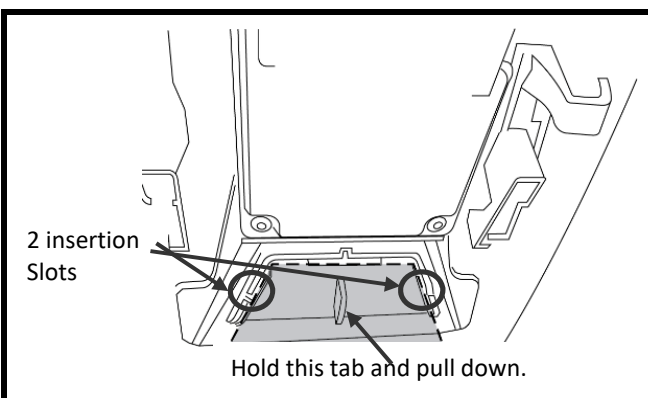
IF VEHICLE IS EQUIPED WITH FRONT LANE CAMERA FOLLOW STEP 2.1 - 2.3 OTHERWISE SKIP TO STEP 2.3 PAGE NO. 5.

TYPE 1



- 2.1) Remove Front Lane camera cover (TYPE 1)
a) Using panel removal tool remove trim by disengaging 4 clips.

Clip

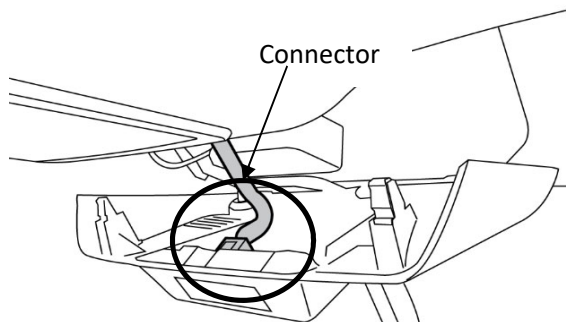
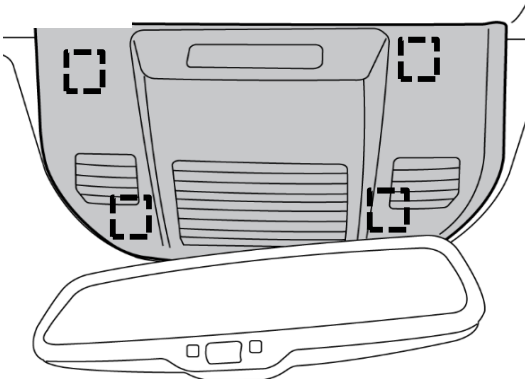


- 2.2) Remove Trim piece under camera cover(If equipped)
a) After camera cover is removed, Pull down on the grey/red piece in picture (Located just above the Mirror mount) with hand so it releases from 2 marked slots.

CAUTION

While Re-installing align plastic piece with 2 slots for proper fit.

TYPE 2

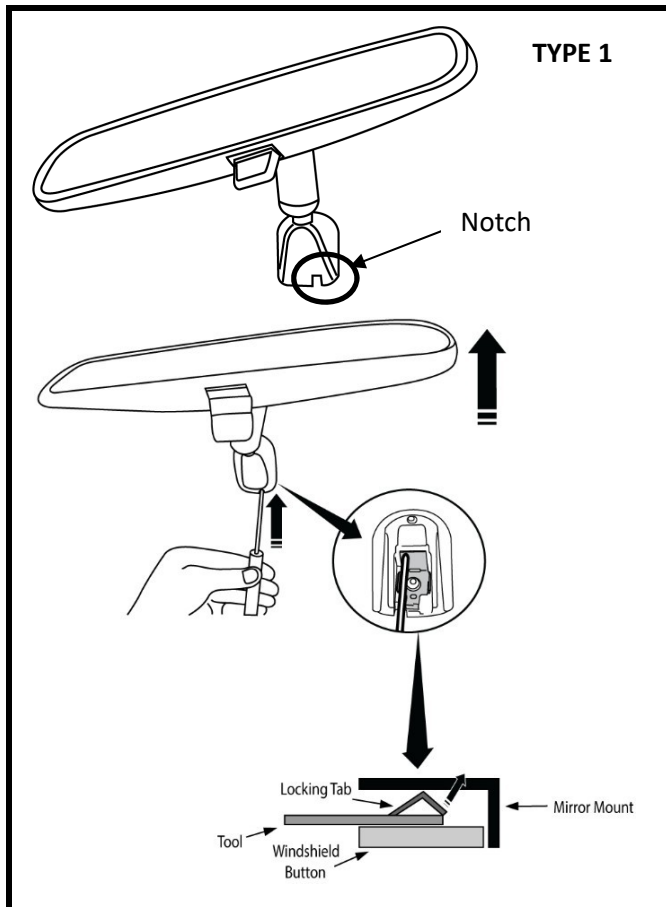


- 2.3) Remove FR Lane Camera trim (TYPE 2)
a) Using Torx-T20 screw driver remove factory mirror and disconnect connector behind the mirror.
b) Using panel removal tool remove trim by disengaging 4 clips.
c) Disconnect connector for passenger airbag light harness and set trim aside.

Clips



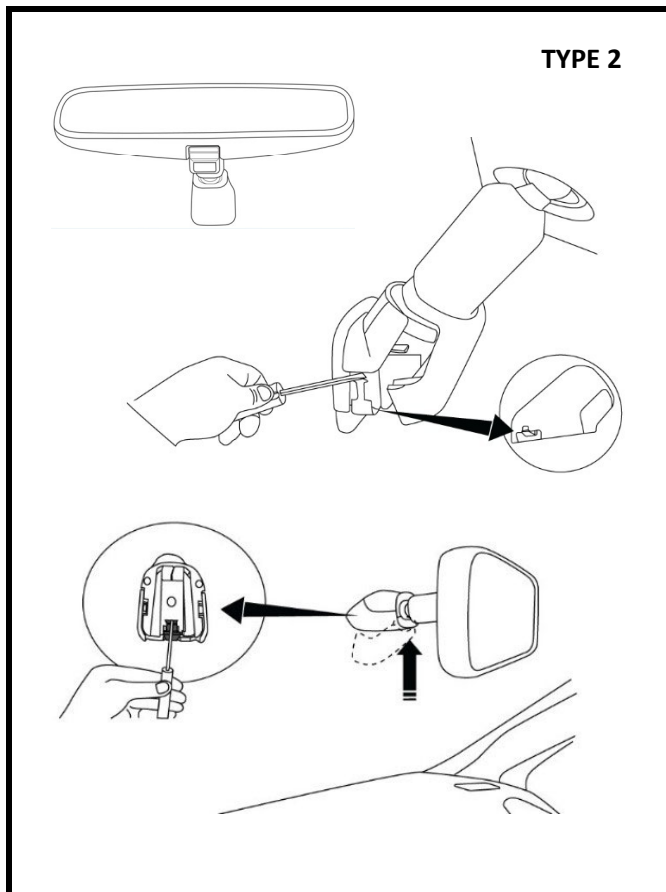
SECTION 2 - VEHICLE PREPARATION



2.3) Remove Factory Mirror

Identify Factory Mirror by looking at mirror Base. If factory mirror base have notch as shown, then remove mirror following step 4.1 (a) to (d). Otherwise skip to step 4.2.

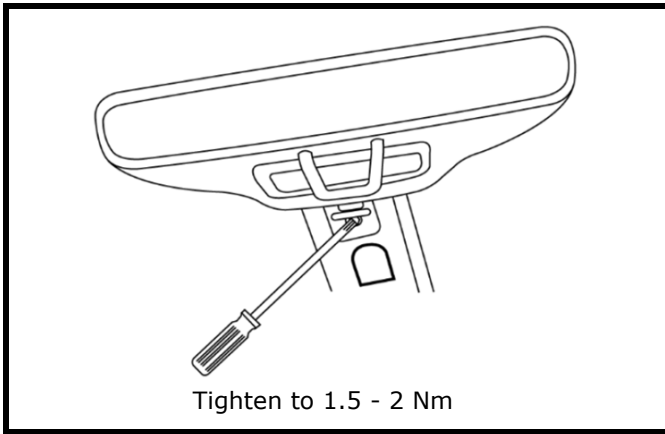
- Slide flat end of 3mm screwdriver into opening at bottom of mirror mount until resistance is felt.
- Apply additional upward force and twist 90 degrees to lift lock spring.
- Lift mirror upward off mirror mount while applying pressure with screwdriver, grasp mirror and lift the mirror up towards headliner and off mirror mounting bracket.
- Discard Mirror.



2.4) Remove Factory Mirror

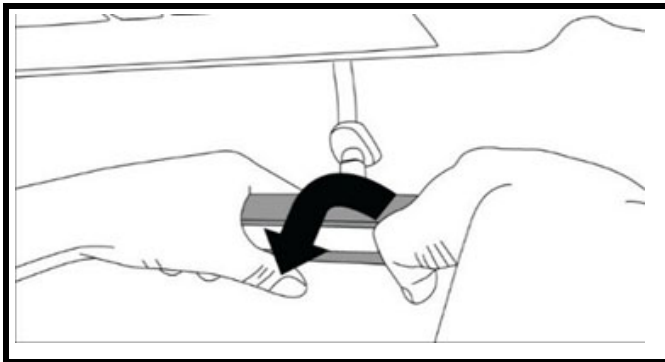
- Using trim removal tools, remove plastic cover from mirror mount to expose plastic tab.
- Locate locking tab at bottom of mirror mount.
- Insert 3mm flat end screwdriver into opening at bottom of mirror mount.
- Push screwdriver up into mount to disengage plastic locking tab.
- While still applying upward pressure with screwdriver, grasp mirror and lift the mirror up towards headliner and off mirror mounting bracket.
- Discard Mirror.

SECTION 3 - FRAMELESS MIRROR INSTALLTION



3.1) Install Frameless Mirror

- a) Slide Frameless mirror base over mirror button on windshield.
- b) Using T-20 Torx head driver tighten screw on mirror mount with forse of 1.5-2.0 Nm(1.3ft-lbs)



3.2) Install Frameless Mirror

- a) Grasp mirror and rotate downward. Check to ensure mirror sits flush against windshield.

3.3) ARQ (Garage Door Opener) Programming and Troubleshooting

- a) For Programming Instructions see Appendix A.
- b) For Troubleshooting Guide see Appendix B.
- c) For Troubleshooting guide of ARQ(garage door opener) using "Lamp Control Module" see Appendix C.

3.4) Re-install trim

- a) Re-Install interior trim that was removed in section 2.

Frameless Mirror with (ARQ™) Universal Remote Control Reference Guide

Read instructions thoroughly BEFORE beginning. If using the remote control with residential door openers, the remote control must be used only with door openers manufactured after 1993 that utilize photoelectric sensors. The photoelectric sensors are always located on or near the bottom of the door track.

ONLINE INSTRUCTIONS AND HOW-TO-VIDEOS

Go to <http://arq.chamberlain.com> for additional instructions and How-to-Videos.

COMPATIBILITY

Compatible with most garage door openers manufactured by Chamberlain®, LiftMaster®, Sears Craftsman®, Garage Master®, Genie®, Linear®, Stanley®, Overhead Door®, Wayne Dalton®, Moore-O-Matic®, Do-It®, Master Mechanic®, Raynor®, Sommer®, True Value®, and Xtreme Garage™. For a complete list of compatible products, go to <http://arq.chamberlain.com>

WARNING

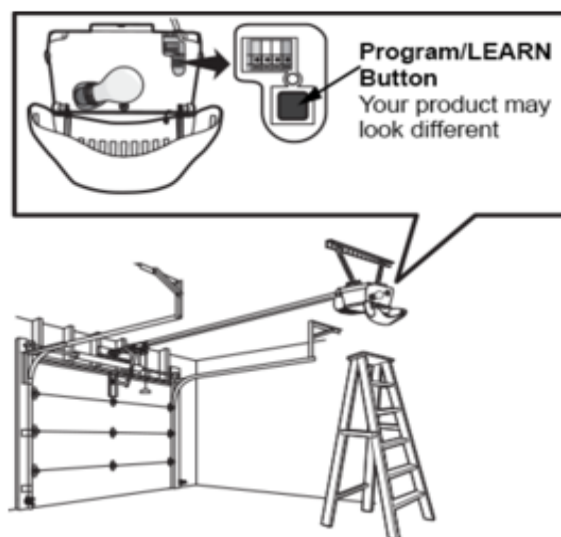
• If using the remote control with residential door openers, the remote control must be used only with door openers manufactured after 1993 that utilize photoelectric sensors. The photoelectric sensors are always located on or near the bottom of the door track.

To prevent possible SERIOUS INJURY or DEATH from a moving door:

- ALWAYS keep remote controls out of reach of children. NEVER permit children to operate, or play with remote control transmitters.
- Activate door ONLY when it can be seen clearly, is properly adjusted and there are no obstructions to door travel.
- ALWAYS keep door in sight until completely closed. NEVER permit anyone to cross path of moving door.
- Your vehicle's engine should be turned OFF while programming the ARQ universal remote control. Do not breathe exhaust gases; they contain colorless carbon monoxide. Carbon monoxide is dangerous. It can cause unconsciousness or death.

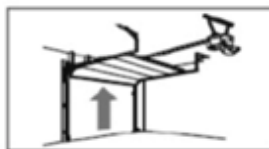
Before You Begin

- 1) Locate the Program/LEARN button on your garage door opener (typically located on the back or side panel).
- 2) IMPORTANT: The remote control will activate your door during programming. Ensure door area is clear of ALL obstructions.



Programming

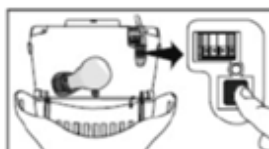
- 1 Open garage door



- 2 (In car): Press and hold the outer 2 buttons on the remote control until the green LED stays solid (3-5 seconds).



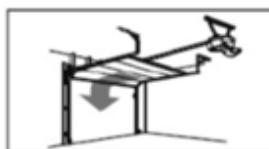
- 3 (In garage): Press and release the Program/LEARN button on the garage door opener (immediately proceed to step 4).



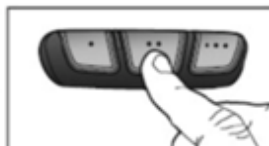
- 4 (In car): Press and release the button you would like to program two times (some Genie® models require three times).



- 5 Wait until the garage door begins to close (up to 60 seconds).

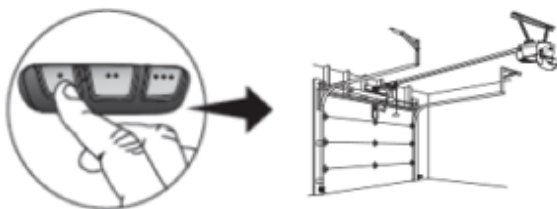


- 6 Immediately press and release any button on the remote control (within 3 seconds of the door moving).



Test

Test the remote control by pressing the button you programmed in step 4. If the door does not move, repeat the programming steps or go to <http://arq.chamberlain.com> for additional instructions.



PRODUCTS WITH SWITCHES

The above instructions are for general programming. If your product has switches instead of a Program/LEARN button, an App is required for programming. Download the ARQ™ Universal Remote Control app from the App Store® or Google Play™ store and follow the instructions in the app.



APPENDIX A - POSI-TAP PROCEDURE

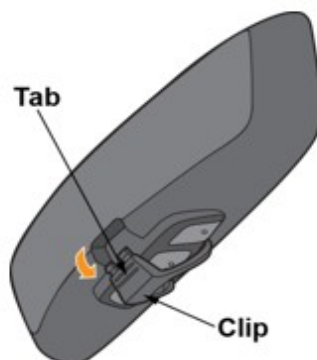
Additional Programming

Program up to three products, such as a garage door opener, lighting, or gate operator with your ARQ™ Universal Remote Control. Each button must be programmed separately.

IMPORTANT: The remote control will activate your door during programming. Ensure door area is clear of ALL obstructions.

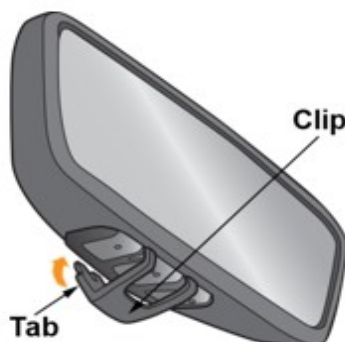
Removal of the Universal Remote Control (ARQ™)

Press the tab on the back of the remote control clip and pull down. Remove the remote control from mirror. DO NOT remove while vehicle is moving.



Replacement of the Universal Remote Control (ARQ™)

Insert the remote control in the mirror. Secure it by rotating the clip upwards and pressing the tab into place. DO NOT replace while vehicle is moving.



Need Help?

Go to <http://arq.chamberlain.com> or call 1-877-ARQ-SYNC (1-877-277-7962)

WARNING

To prevent possible **SERIOUS INJURY** or **DEATH**:

- DO NOT use a visibly damaged remote control or battery.

- DO NOT attempt to repair the remote control or battery.

- If battery is swallowed, immediately notify doctor.

To reduce risk of fire, explosion or chemical burn:

- DO NOT recharge the battery, disassemble, heat above 212°F (100°C) or incinerate.

The remote control contains a Lithium battery that is not serviceable or replaceable. Dispose of remote control properly.

NOTICE: To comply with FCC and/or Industry Canada (IC) rules, adjustment or modifications of this transceiver are prohibited. THERE ARE NO USER SERVICEABLE PARTS.

This device complies with Part 15 of the FCC rules and IC RSS-210. Operation is subject to the following two conditions: (1) this device may not cause harmful interference, and (2) this device must accept any interference received, including interference that may cause undesired operation.

This device must be installed in a way where a minimum 8" (20 cm) distance is maintained between users/bystanders and device

Troubleshooting Guide for ARQ™ using “Lamp Control Module”

Before you begin press any one of the three buttons and verify green LED flashes

The following instructions require MyQ Lamp Control to verify the ARQ™ Universal Remote Control. The MyQ Light Control may be purchased at www.chamberlain.com PN# PILCEV

Remote Lamp Control



General Instructions

Press and release the Program/LEARN button on the MyQ Lamp Control, within 30 seconds press and hold any one button on the remote control you would like to use. If programming is not successful, proceed to the steps below.

- 1** Make sure the light connected to the lamp control is ON.



- 2** (In vehicle): Press and hold the 2 outer buttons on your ARQ™ remote control until the green LED stays solid (3-5 seconds).



- 3** Press and release the LEARN button on the lamp control.

- 4** (In vehicle): Press and release the button **twice** that you would like to program.



- 5** Wait for the light to turn off, then **immediately** press and release any button on your remote control (within 3 seconds of the light turning off).



Test your ARQ™ remote control by pressing the button you programmed in step 4. If the light does not activate, repeat the programming steps.

Customer must contact ARQ™ Customer Service help line for programming issues, before returning to dealer as “Defective Part”

Need Help?

Go to <http://arq.chamberlain.com> or call 1-877-ARQ-SYNC (1-877-277-7962)

Universal Remote Control (ARQ™) Troubleshooting Guide Diagnostic Flow Chart PN# 999S3 V5110

