

2005-2015 NISSAN XTERRA FRONT BUMPER

FRONT BUMPER INSTALLATION INSTRUCTIONS



SAFETY

Know Safety, no injury. Know injury, no safety. ~Author Unknown

- **READ ALL SAFETY INSTRUCTIONS BEFORE INSTALLATION**
 - FOLLOW ALL INSTRUCTIONS FOR PROPER ASSEMBLY
 - WEAR APPROPRIATE EYE PROTECTION
 - EXERCISE CARE WHEN LIFTING COMPONENTS
 - USE APPROPRIATE TORQUE FOR BOLTS
 - BLUE THREAD LOCKING COMPOUND IS RECOMMENDED ON ALL BOLTS

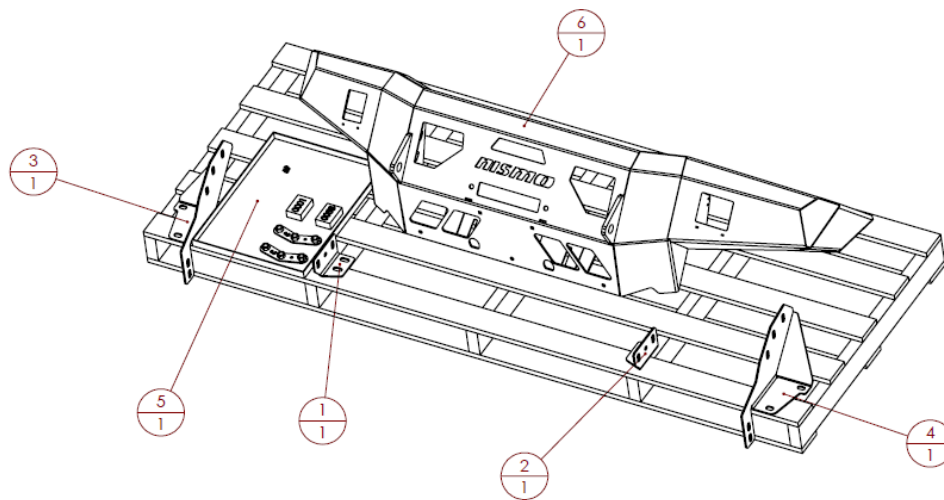


Suggested Torque Values For Steel Grade 5 Standard Bolts		
BOLT DIAMETER (INCH)	THREADS PER INCH	TORQUE (POUND - FEET)
1/4	20	7
5/16	18	14
3/8	16	25
7/16	14	40
1/2	13	60
9/16	12	88
5/8	11	120
3/4	10	200
7/8	9	302
1	8	466

Suggested Torque Values For Steel Grade 8.8 Metric Bolts		
BOLT DIAMETER (mm)	THREAD PITCH (mm)	TORQUE (POUND-FEET)
6	1.0	7
8	1.25	16
10	1.5	32
12	1.75	55
14	2.0	88
16	2.0	140
18	2.5	195
20	2.5	275
22	2.5	375
24	3.0	475

I. PARTS LIST

ITEM NO.	QTY	PART NUMBER	DESCRIPTION	
1	1	601-56-4644	R BOTTOM FRAME MOUNT	-
2	1	601-56-4645	L BOTTOM FRAME MOUNT	-
3	1	601-56-5707	R FRAME MOUNT	-
4	1	601-56-5708	L FRAME MOUNT	-
5	1	60H-56-0267	INSTALL KIT #267	-
6	1	60P-56-1017	600-56-1017 POLISHED	-



**REMOVE CONTENTS FROM BOX AND VERIFY ALL PARTS ARE PRESENT.
IF ALL PARTS ARE NOT PRESENT, CONTACT YOUR DEALER.**

II. TOOL LIST

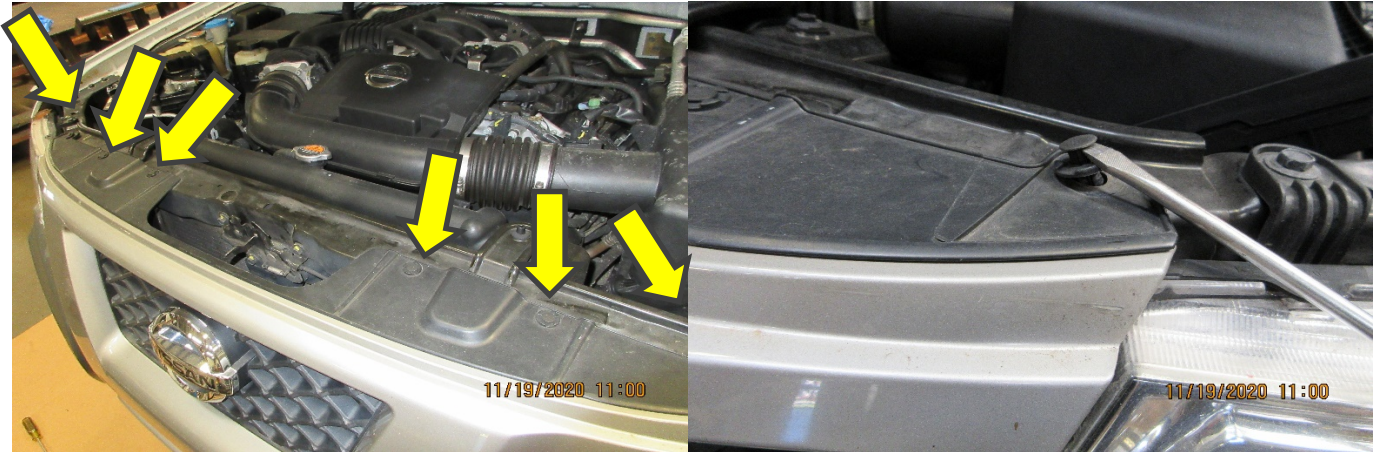
1. A Good Friend
2. Basic Tool Kit
3. Blue Masking Tape
4. Trim Tool or Flathead Screwdriver
5. 10mm Socket or Wrench
6. 17mm Socket or Wrench
7. 19mm Socket or Wrench
8. $\frac{3}{4}$ " Socket or Wrench
9. Ratchet Extension
10. Philips Screwdriver

III. VEHICLE PREPARATION

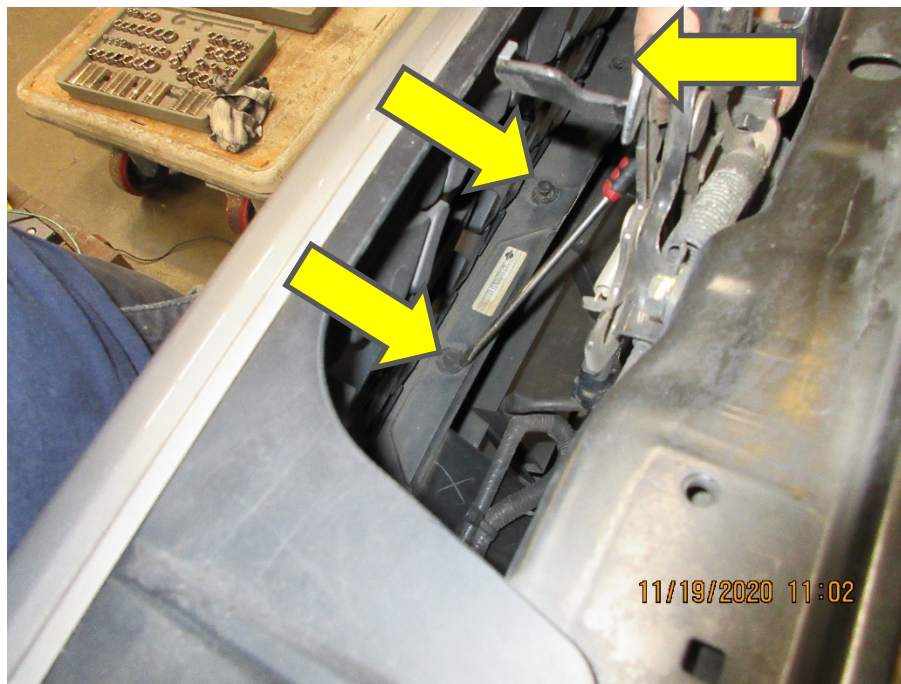
1. Park vehicle on level surface.
2. Engage parking brake and disconnect battery.
3. Using blue masking tape, mask along the profile of your vehicle around the bumper. This will help protect your vehicle from any accidental scratches.

IV. REMOVAL OF OE BUMPER

1. Open the hood. Using trim tool or flathead screwdriver, remove six plastic retainers from top of grille. Set retainers aside to be reused.



2. Using access gap between radiator and grille, remove 5 plastic retainers attaching bottom of grille to top of bumper. (2 additional plastic retainers not pictured)



3. Once all plastic retainers are removed, gently pull on grille to release clips. There will be 4 clips along bottom of grille, 1 in the top left corner and 1 in the top right corner of grille. Removed the grille from the vehicle.

4. Using a 10mm Socket, remove 4 bolts from bottom of bumper attaching skid plate to mounting brackets. 2 will have access holes as pictured in left image, 2 will have easy access as pictured in right image.



5. Remove 2 bolts with a 10mm Socket connecting skid plate to frame.
6. Remove 2 Philips screws from the inner fender and 2 Philips screws from the bottom of the outer bumper spoiler. Pull the inner fender back to expose the inside of the bumper. There will be one more 10mm screw to remove behind inner fender. Repeat for other side.



7. Unplug fog lights from both sides by reaching inside the inner fender. Remove bumper from vehicle.

8. Remove plastic clips below headlight as well as vertical plastic support beside headlight. Repeat for other side.
9. Remove 4 bolts using a 17mm socket from front bumper support bar. (Picture shows one side)

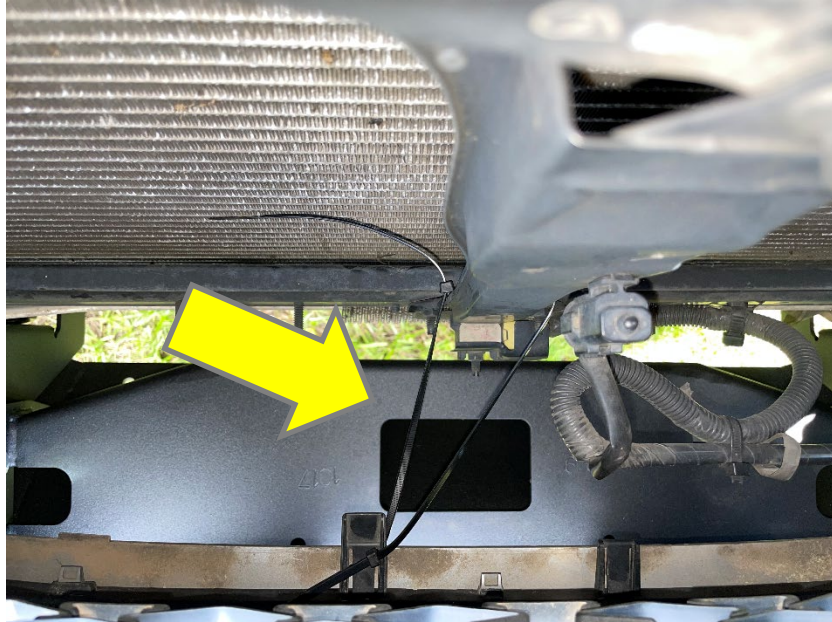


10. Remove 2 bolts with a 17mm socket from tow hook and remove tow hook. Set bolts aside to be reused.

V. PREPARATION AND INSTALLATION OF NISMO BUMPER

1. Lay NISMO bumper on a carpeted surface. Install any lights, sensors, winch, or other accessories into NISMO bumper at this time. ***Note: when installing a winch, you must trim grill to clear the winch.**

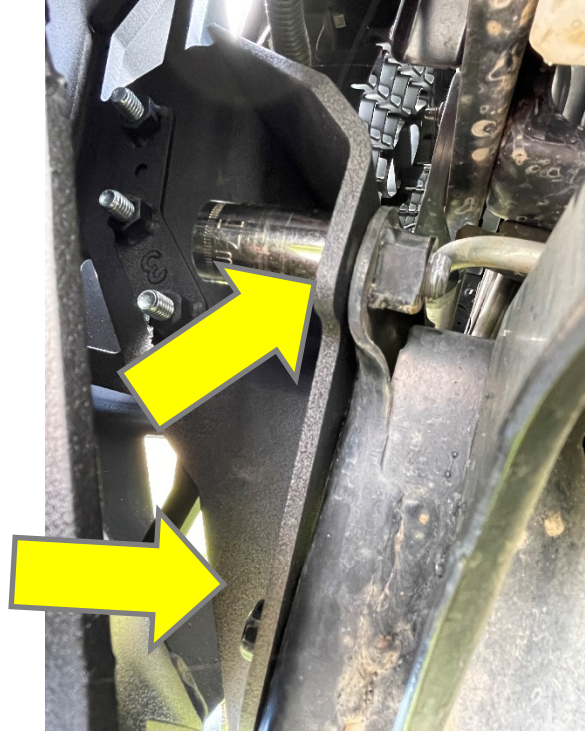
2. Reinstall grill onto the vehicle. Use a zip tie to secure bottom of grille to the mounting bracket as shown.



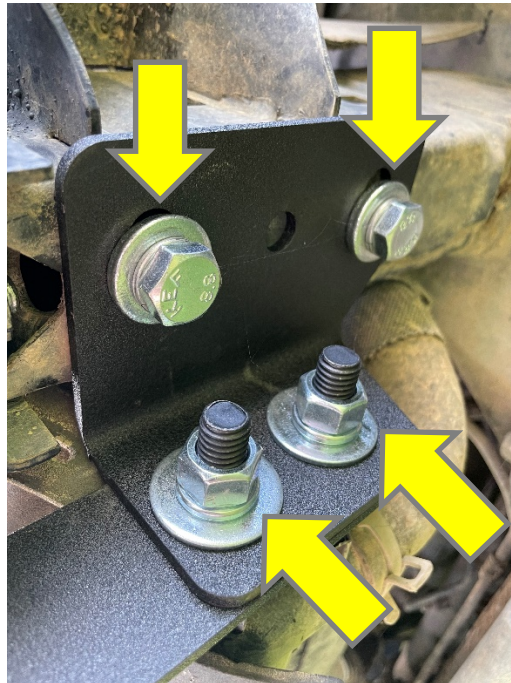
3. Layout frame mounts, lower frame mounts, OE hardware from the tow hook and bumper support, and supplied hardware.



4. Attach frame mounts to frame horns using OE hardware and 17mm socket. Leave all hardware hand tight.



5. Attach lower frame mounts to frame mounts with the head of the bolt to the inside of the truck using bolts from hardware kit 60K-56-0001. Leave all hardware hand tight. Make sure to use washers and lock washers. Use hardware kit 60K-56-0209 to fasten lower frame mount to the truck.



- Layout Weldnut tabs and hardware from kit 60K-56-0058 to attach bumper to frame mounts. Using a crane or a few friends, install bumper onto truck. Hand tighten all hardware. Adjust bumper so that it is level and tighten all bolts on frame mounts and bumper mounts with a $\frac{3}{4}$ " and 17mm socket and wrench. Leave a minimum of $\frac{3}{8}$ " of clearance between truck body and NISMO bumper. When the truck flexes off road, this will ensure the bumper does not contact the truck body. Trim inner fenders to match the bumper profile.



Congratulations! Your Installation is now complete.

Thank You for your purchase!