

2005-2015 NISSAN XTERRA REAR BUMPER

REAR BUMPER INSTALLATION INSTRUCTIONS



SAFETY

Know Safety, no injury. Know injury, no safety. ~Author Unknown

- **READ ALL SAFETY INSTRUCTIONS BEFORE INSTALLATION**
 - FOLLOW ALL INSTRUCTIONS FOR PROPER ASSEMBLY
 - WEAR APPROPRIATE EYE PROTECTION
 - EXERCISE CARE WHEN LIFTING COMPONENTS
 - USE APPROPRIATE TORQUE FOR BOLTS
 - BLUE THREAD LOCKING COMPOUND IS RECOMMENDED ON ALL BOLTS



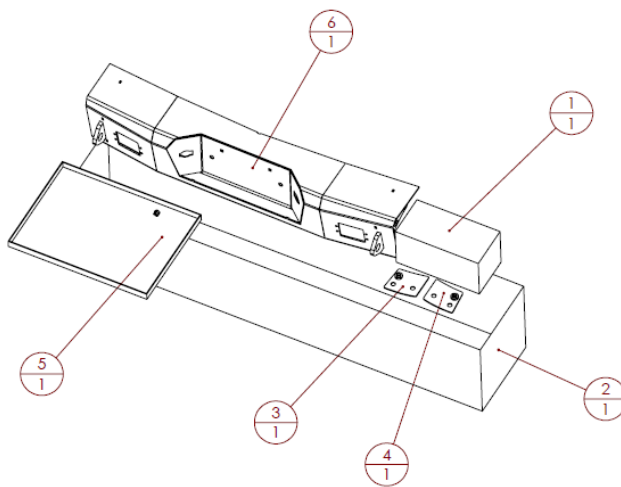


600-56-1018

Suggested Torque Values For Steel Grade 5 Standard Bolts		
BOLT DIAMETER (INCH)	THREADS PER INCH	TORQUE (POUND - FEET)
1/4	20	7
5/16	18	14
3/8	16	25
7/16	14	40
1/2	13	60
9/16	12	88
5/8	11	120
3/4	10	200
7/8	9	302
1	8	466

Suggested Torque Values For Steel Grade 8.8 Metric Bolts		
BOLT DIAMETER (mm)	THREAD PITCH (mm)	TORQUE (POUND-FEET)
6	1.0	7
8	1.25	16
10	1.5	32
12	1.75	55
14	2.0	88
16	2.0	140
18	2.5	195
20	2.5	275
22	2.5	375
24	3.0	475

I. PARTS LIST





600-56-1018

ITEM NO.	QTY	PART NUMBER	DESCRIPTION
1	1	307-13-0928	ZILLA CUBE FLNGE24W FLD SMOKE (QTY-2)
2	1	405-01-0089	12x12x60 CARDBOARD BOX
3	1	601-56-4632	L HITCH SPACER
4	1	601-56-4633	R HITCH SPACER
5	1	60H-56-0269	INSTALL KIT #269
6	1	60P-56-1018	600-56-1018 POLISHED

REMOVE CONTENTS FROM BOX AND VERIFY ALL PARTS ARE PRESENT.

IF ALL PARTS ARE NOT PRESENT, CONTACT YOUR DEALER.

II. TOOL LIST

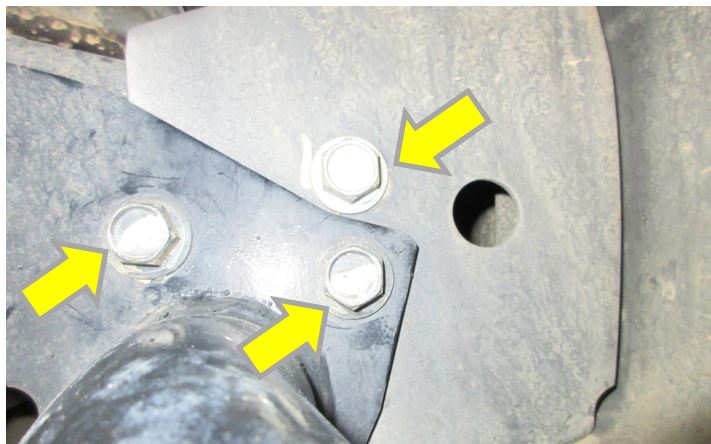
1. A Good Friend
2. Basic Tool Kit
3. OE spare tire access tools
4. Blue Masking Tape
5. 19mm Socket or Wrench
6. 10mm socket

III. VEHICLE PREPARATION

1. Park vehicle on level surface.
2. Engage parking brake and disconnect battery.
3. Using blue masking tape, mask along the profile of your vehicle around the bumper. This will help protect your vehicle from any accidental scratches.

IV. REMOVAL OF OE BUMPER

1. Use OE spare tire removal tools provided with your vehicle to lower and remove the spare tire. See owner's manual for instructions. With the spare tire removed bumper removal is easy.
2. Unplug license plate light wiring harness from vehicle harness.
3. Using a 19mm socket, remove three bolts per side attaching bumper to vehicle. Have a friend hold the bumper while you remove the bolts. The receiver hitch will remain on the vehicle, but may swivel down when the bumper is removed.

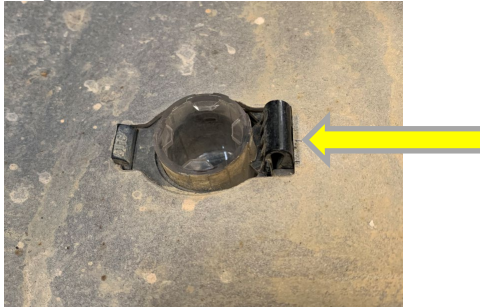




600-56-1018

V. PREPARATION AND INSTALLATION OF NISMO BUMPER

1. Remove OE license plate lights from OE bumper. Disengage tab and push light housings through cutouts. Reinstall lights in NISMO bumper.



2. Lay NISMO bumper on a carpeted surface. Install provided flush mount lights and OE license plate lights in bumper at this time using hardware provided in light box.
3. Using blue masking tape, attach hitch spacers to frame as shown. (both sides)



4. Have a friend help you hold the bumper in position and use OE hardware to attach it to the vehicle. Before tightening the bumper, check the lift gate for proper operation. Tighten bolts to specs on page 2.
NOTE: The bumper mounts will slide INSIDE the receiver mounting flanges.

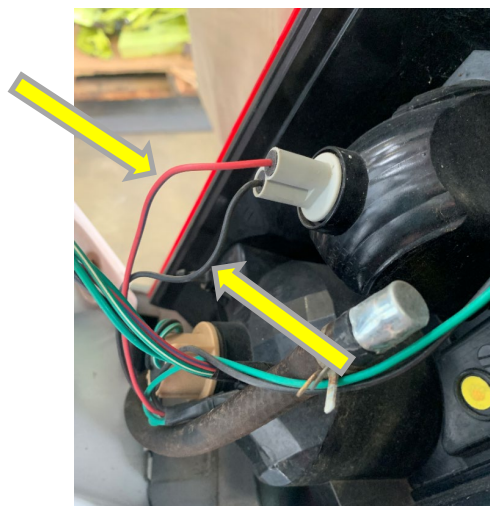




600-56-1018

5. Plug in OE license plate lighting harness.
6. Flush mount reverse lights can be wired into the reverse light wiring of the vehicle.
The OE taillight wiring is as follows + (positive) red
- (negative) black

Using a 10mm socket, remove two bolts attaching the right taillight to the body. Route light wires behind bumper and into the bottom of the taillight. Use wiring connectors (butt connectors or ttap to wire flush mount lights to vehicle.



Congratulations! Your Installation is now complete.

Thank You for your purchase!