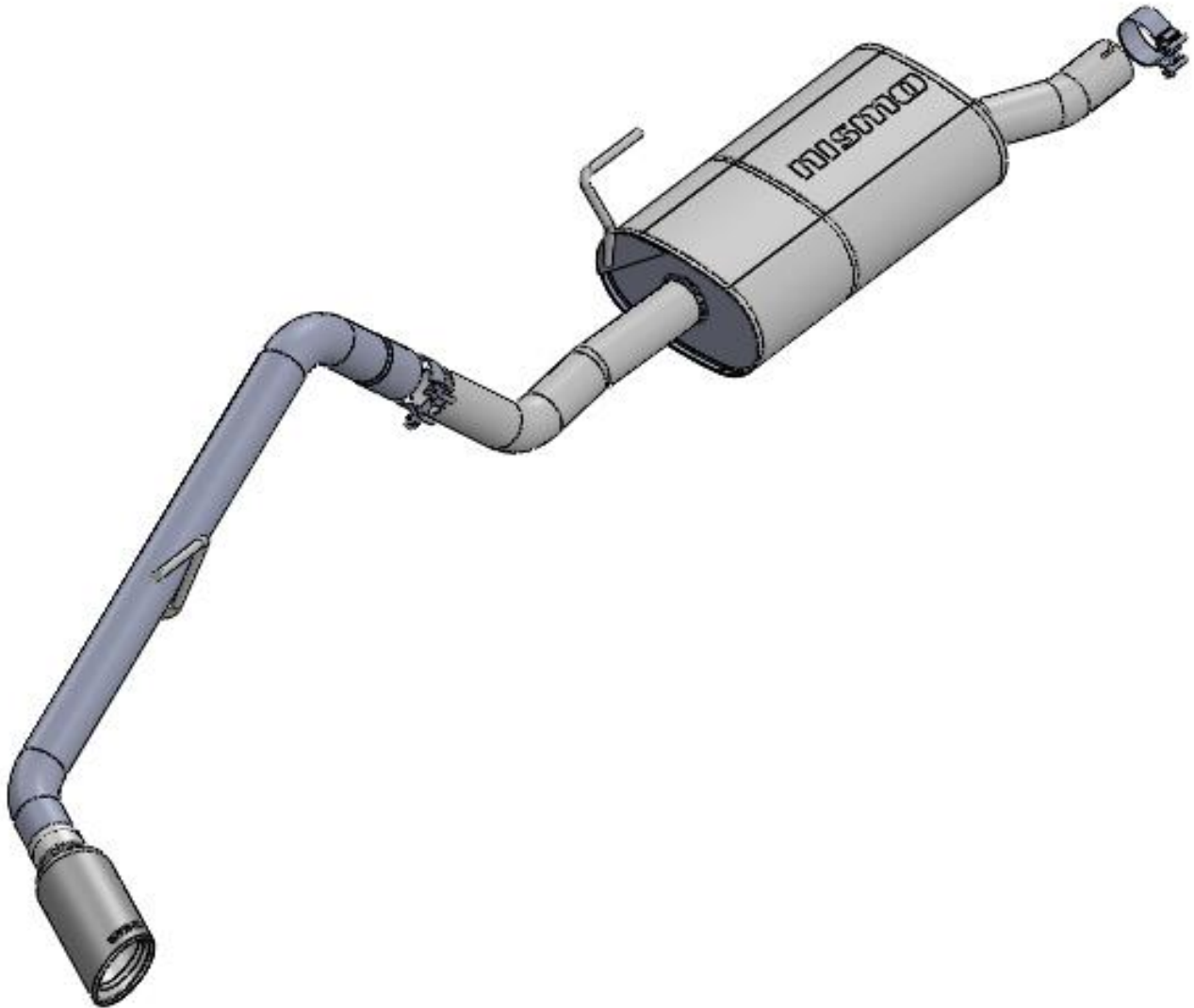


## **OVERVIEW:**

*The use of a floor hoist is recommended for this installation. If you do not have access to one, use a hydraulic floor jack and jack stands on a level surface to raise the vehicle.*

*Lay the NISMO system out beside the vehicle and make sure all parts are present.*



## **Kit Includes:**

<b><u>Find No.</u></b>	<b><u>Qty:</u></b>	<b><u>Description</u></b>
1	1	Muffler assy
2	1	Tailpipe
3	2	Clamp: 2.50"

## REMOVAL INSTRUCTIONS:

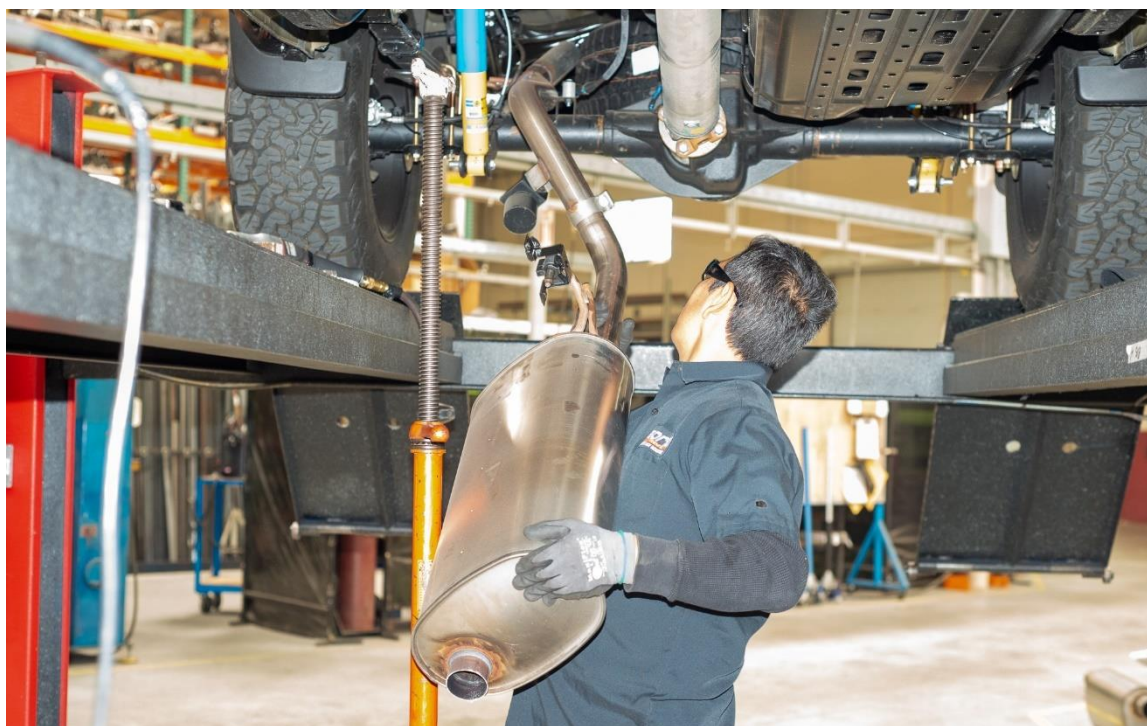
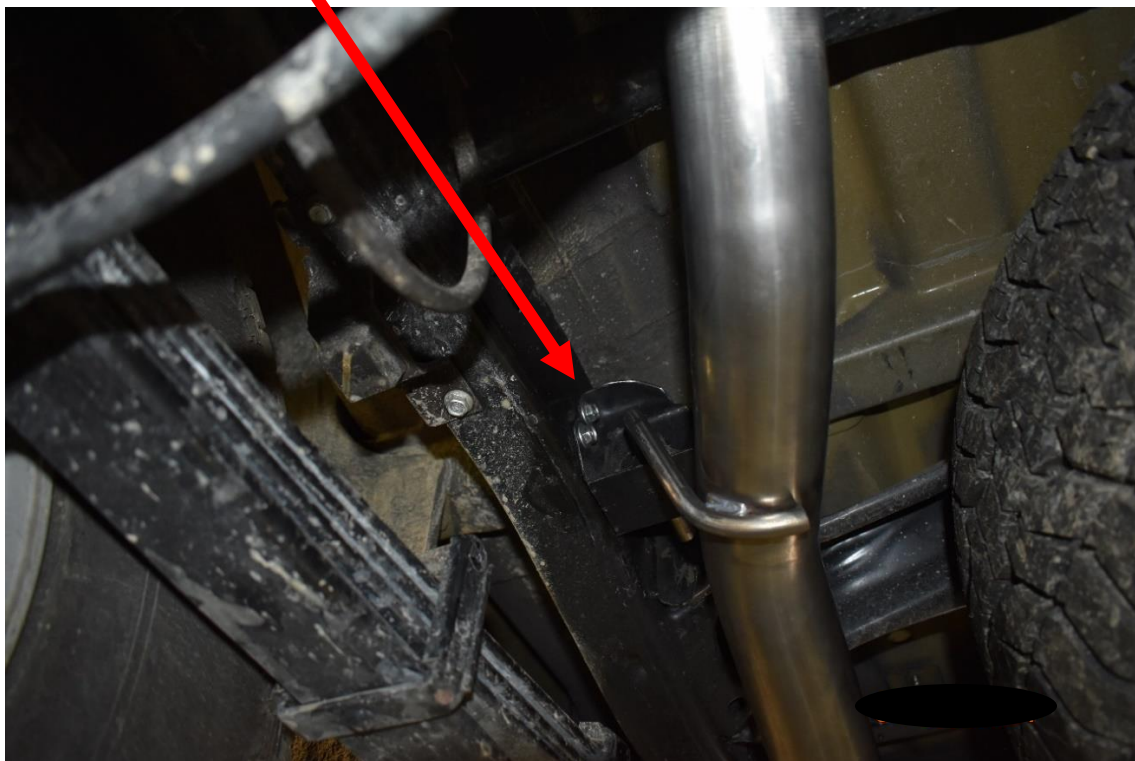
**STEP 1:** Raise vehicle. Lubricate all rubber isolators, bolts, and nuts.

**STEP 2:** Make a mark 1" in front of the stock muffler. Cut on this mark using a reciprocating saw.





**STEP 3:** Unbolt the rear tailpipe isolator bracket from the frame. Remove the stock exhaust system by sliding the system backwards, then lowering and working the tailpipe forward over the rear axle. Set aside.



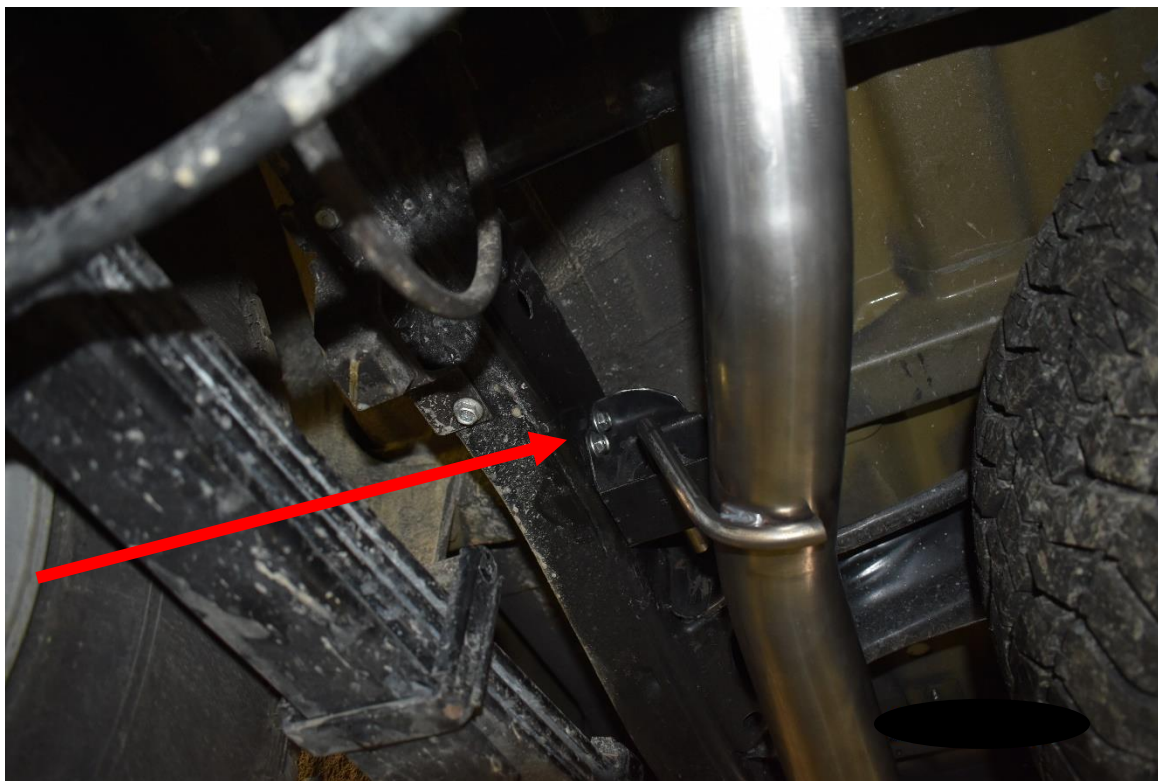
## INSTALLATION INSTRUCTIONS:

**STEP 1:** Slide a 2.5" clamp over the y-pipe. Slide the expanded inlet of the muffler over the y-pipe while inserting the hanger into the rubber mount on the crossmember.





**STEP 4:** Remove the rubber mount from the factory tailpipe. Slide a 2.5" clamp over the muffler outlet pipe. Work the tailpipe over the rear axle and slide the expanded inlet over the muffler pipe. Slide the rubber mount over the tailpipe hanger and reinstall to frame.



**Step 5: Position the tip and check the system for correct orientation / clearances from other components.**

**Step 6: Tighten the exhaust mounts to OE spec, ~20 ft-lbs. Tighten the pipe clamps to 32-35 ft-lbs.**

**Step 7: Remove the plastic wrap on the exhaust tip, start the vehicle and listen / look for exhaust leaks. Tighten any clamps as necessary.**

**Enjoy you new NISMO performance exhaust!**



*Note: When you first start your vehicle after the installation of your new NISMO Performance Exhaust System, there may be some smoke and fumes coming from the system. This is a protective water based coating used in the manufacturing of mandrel bent performance exhaust tubing. This is not a problem and will disappear within a very short period of time after the exhaust has reached operating temperatures.*