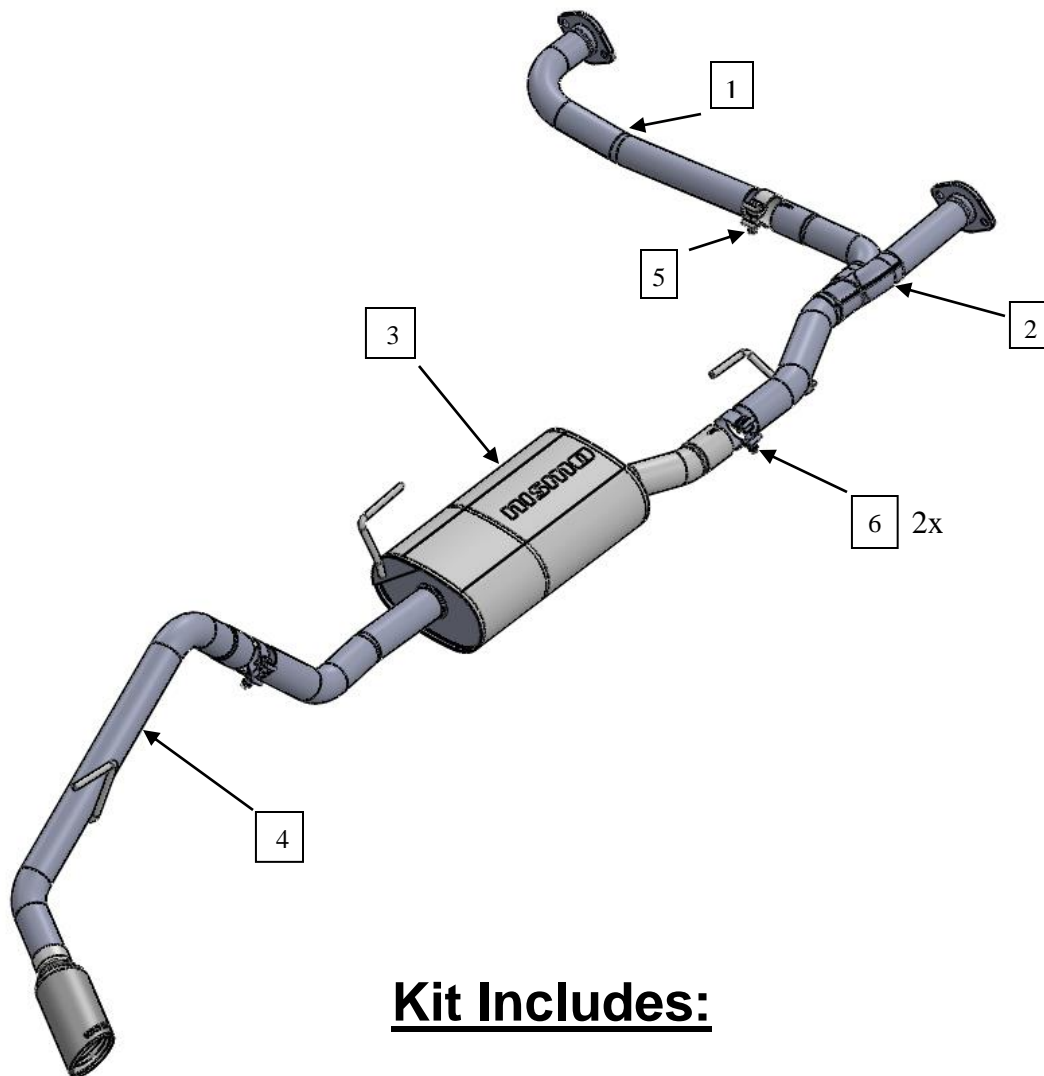


OVERVIEW:

The use of a floor hoist is recommended for this installation. If you do not have access to one, use a hydraulic floor jack and jack stands on a level surface to raise the vehicle.

Lay the NISMO system out beside the vehicle and make sure all parts are present.



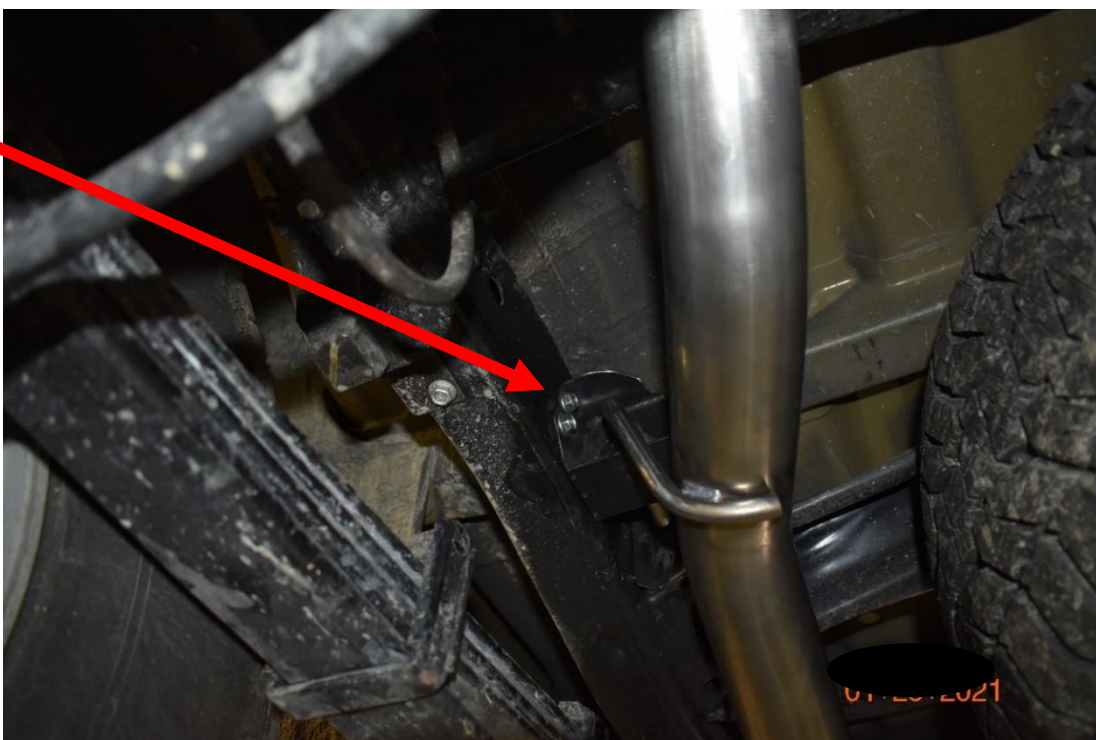
Kit Includes:

<u>Find No.</u>	<u>Qty:</u>	<u>Description</u>
1	1	LH Front Pipe
2	1	Y-pipe
3	1	Muffler assy
4	1	Tailpipe
5	1	Clamp: 2.25"
6	2	Clamp: 2.50"

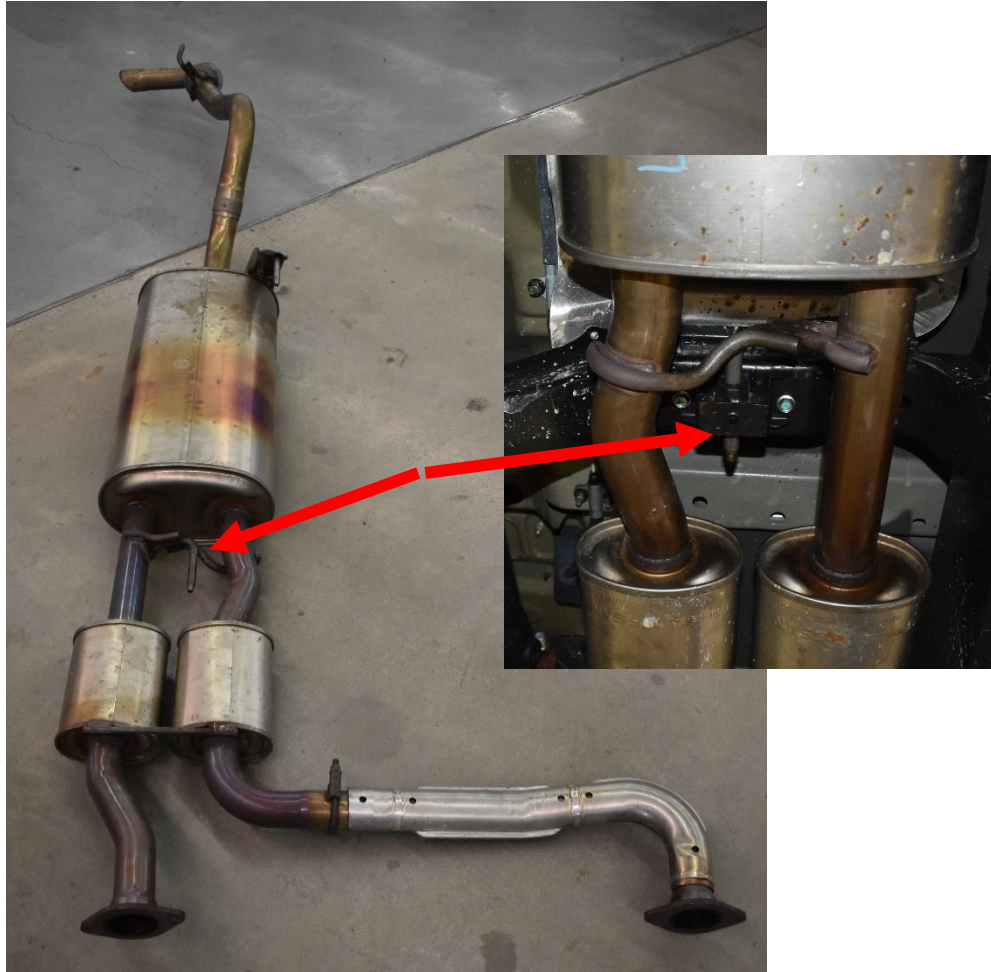
REMOVAL INSTRUCTIONS:

STEP 1: Raise vehicle. Lubricate all rubber isolators, bolts, and nuts.

STEP 2: Remove the 4 bolts from the flanges just after the catalytic converters. Unbolt the rear tailpipe isolator bracket from the frame.



STEP 3: Slide the factory system backwards. Drop the front and slide forward, working the tailpipe over the rear axle.

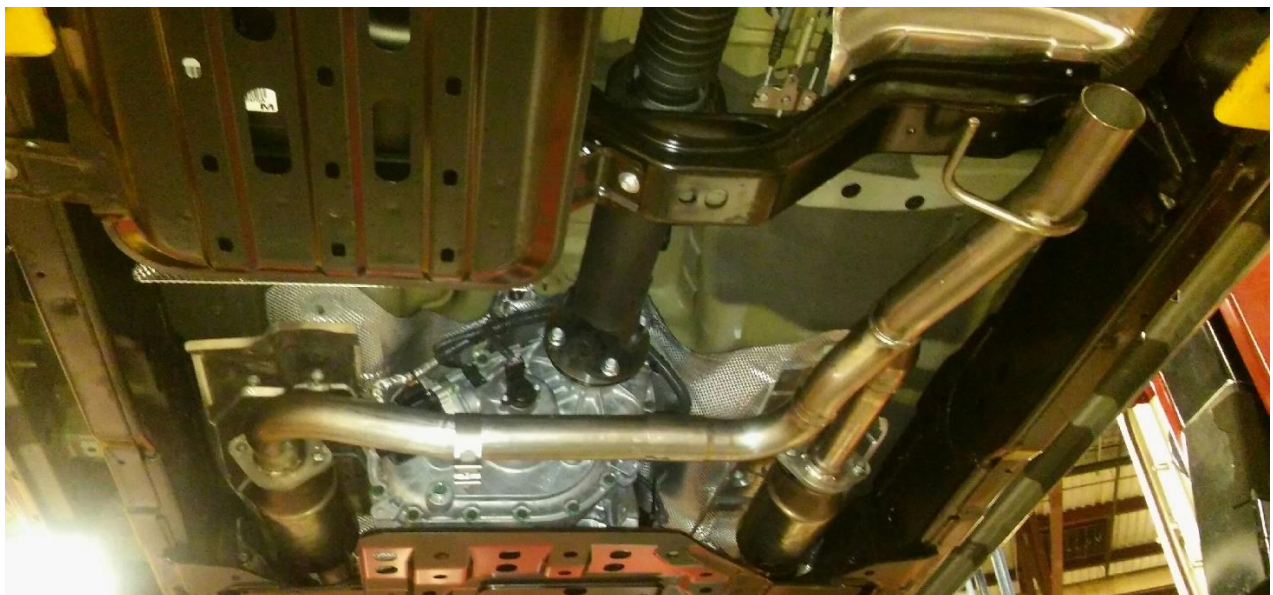


INSTALLATION INSTRUCTIONS:

STEP 1: Set the driver side exhaust pipe in place, using the OE gasket, and tightening the nuts just a few turns to keep it loose. Slide the 2.25" exhaust clamp onto the driver's side pipe.



STEP 2: Align the Passenger side y-pipe with the drivers side pipe and passenger side catalytic converter, re-using the OE gasket, and tightening the nuts a few turns to keep the piping loose for fit-up. Slide the hanger through the rubber mount on the cross member. Note: removing the isolator mount from the frame and reinstalling may help make the job be easier.



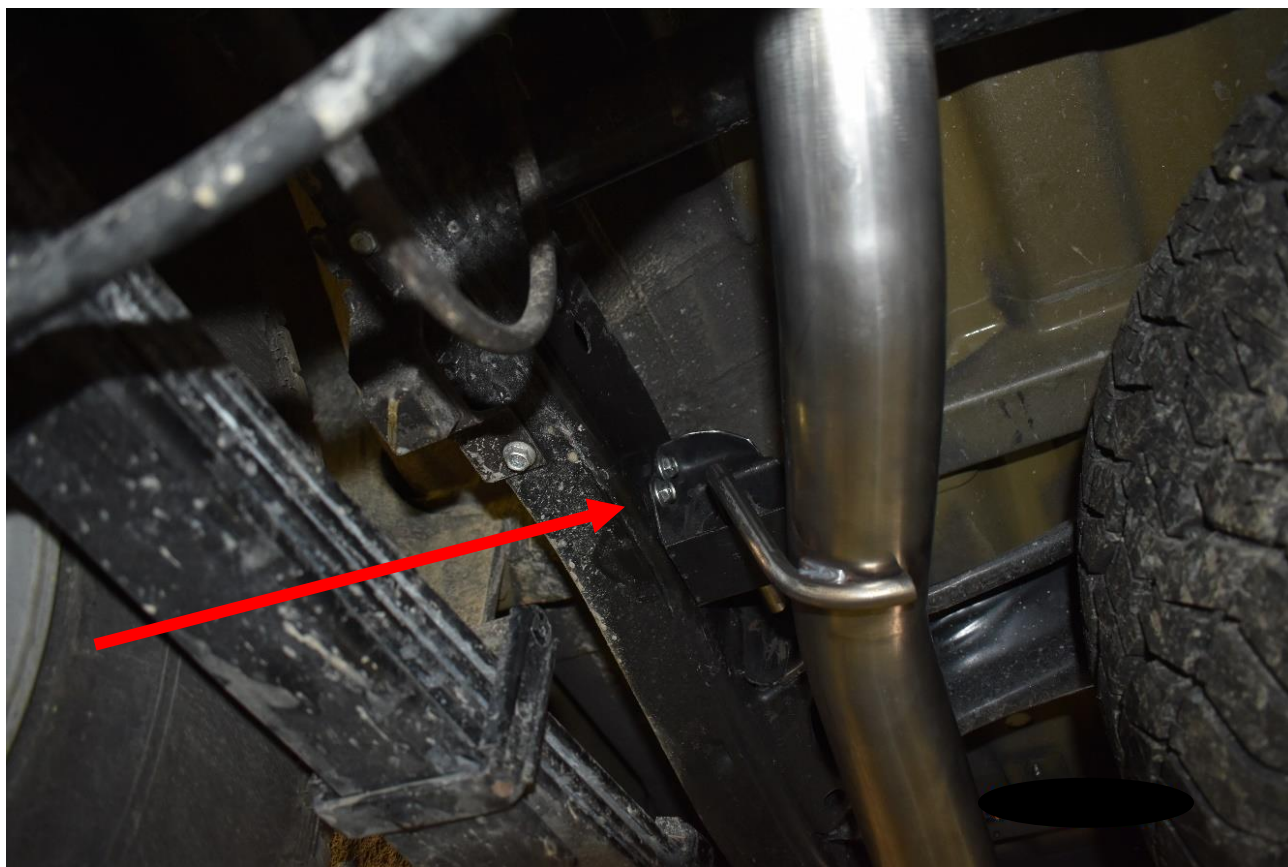


Note any orientation marks on the bracket if removed and reinstalled.

STEP 3: Slide a 2.5" clamp over the y-pipe. Slide the expanded inlet of the muffler over the y-pipe while inserting the hanger into the rubber mount on the crossmember.



STEP 4: Remove the rubber mount for the tailpipe from the frame. Slide a 2.5" clamp over the muffler outlet pipe. Work the tailpipe over the rear axle and slide the expanded inlet over the muffler pipe. Slide the rubber mount over the tailpipe hanger and reinstall to frame.



Step 5: Position the tip and check the system for correct orientation / clearances from other components.

Step 6: Tighten the exhaust mounts to OE spec, ~20 ft-lbs. Tighten the pipe clamps to 32-35 ft-lbs.

Step 7: Remove the plastic wrap on the exhaust tip, start the vehicle and listen / look for exhaust leaks. Tighten any clamps as necessary.

Enjoy your new NISMO performance exhaust!



Note: When you first start your vehicle after the installation of your new NISMO Performance Exhaust System, there may be some smoke and fumes coming from the system. This is a protective water based coating used in the manufacturing of mandrel bent performance exhaust tubing. This is not a problem and will disappear within a very short period of time after the exhaust has reached operating temperatures.