

# Z1 300ZX STAINLESS STEEL BALL BEARING TURBO OIL FEED LINES INSTALLATION MANUAL



This Installation Manual is intended for the following models:

1990-2000

Nissan 300ZX

## PROLOGUE:

Study these instructions completely before proceeding to assembly. The installer must have a thorough knowledge of automotive systems operation. If unfamiliar with any of the concepts outlined in this instruction, we recommend the installation be completed by a qualified professional.

## WARNING!

Extreme caution should be taken when performing maintenance or performance upgrades to your vehicle. Please observe and abide by any Warning or Caution labels placed on the various components and tools used when servicing your vehicle. If you have any questions regarding installation or the various components included with the Z1 Motorsports 300ZX Stainless Steel Ball Bearing Turbo Oil Feed Line Kit, consult with a Professional Mechanic or contact Z1 Motorsports for more information.

## **PARTS INCLUDED:**

Item	Quantity	Description
1	1	Stainless Steel Oil Feed Line – Driver Side
2	1	Stainless Steel Oil Feed Line – Passenger Side

## **TOOLS REQUIRED:**

- Ratchet
- 12mm Open Ended Wrench
- Assorted Metric Wrenches
- Assorted Metric Sockets
- Hydraulic Jack
- (2) 2-Ton (or greater) Jack Stands

## **SAFETY REQUIREMENTS:**

- Always wear safety glasses and any necessary protective garments. If using any fluids, chemicals, or solvents, a respirator is recommended.
- Always use properly rated jack stands when working under your vehicle.
- Always keep limbs and parts away from moving drivetrain parts.
- Only operate drivetrain in safe space and well-ventilated areas.

## **BEFORE YOU BEGIN:**

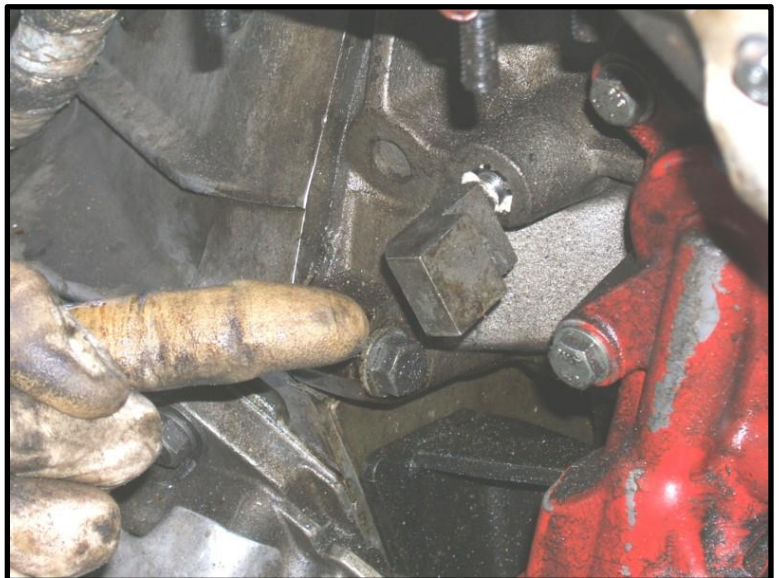
Remove contents from the Z1 Motorsports 300ZX Stainless Steel Ball Bearing Turbo Oil Feed Line Kit and verify that ALL necessary hardware is present.

## **PROCEDURE:**

1. Assure the car's ignition is in the OFF position and the NEGATIVE (-) battery terminal is disconnected.
2. Place the transmission in Park position (or in Reverse gear if equipped with a manual transmission). Apply the parking brake.
3. Locate proper jacking points on vehicle's chassis (refer to vehicle's Owner Manual). Raise and support vehicle using jack & jack stands.
4. Unlatch and raise vehicle's hood. Apply hood prop.
5. Refer to Factory Service Manual (FSM) to remove the OEM turbo oil feed lines.

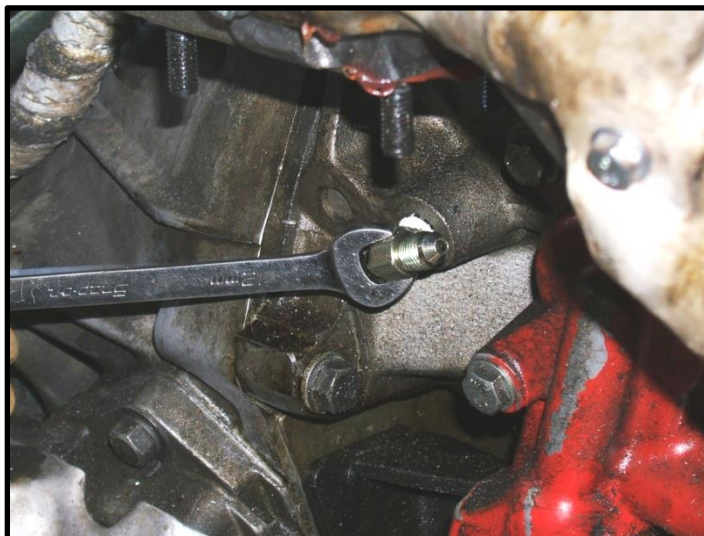
**Note:** Be sure to retain the banjo bolt from the passenger side line at the connector by the engine block, as it will be used later (block pictured at right).

6. Remove the block that connected the passenger feed line to the engine block (pictured at right).
7. Remove the 90° fitting from the passenger Z1 SS Oil Feed Line.



8. Install the 90° fitting in the exposed hole on the engine block. Tighten with a 12mm wrench.

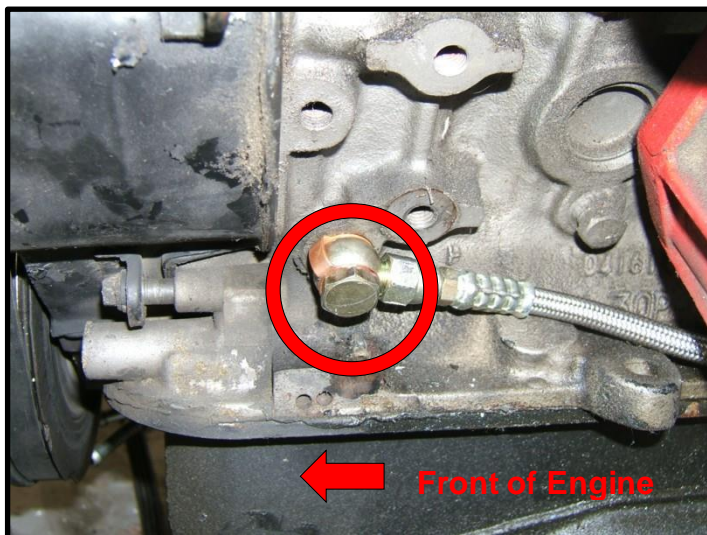
Note: The 90° fitting has a tapered end and does not require thread sealant. However, the use of thread sealant is recommended.



9. Attach the straight end of passenger side oil feed line to 90° fitting. Attach the other side with brass restrictor fitting, to feed port on turbo, routing the line under the turbo (as shown).



10. Using the banjo bolt from the passenger side feed line (**NOT** the “K-Bolt” pictured below from the OEM driver feed line), attach the driver side line to the engine block (as shown).





11. Route the driver side line along the base of the engine block and behind the oil dipstick tube (as shown).  
Then up to the driver side turbo oil feed port.



**END**

**Additional Technical Support:**  
Contact Z1 Motorsports at [info@z1motorsports.com](mailto:info@z1motorsports.com)  
Or call 770-838-7777 between 9am and 6pm ET