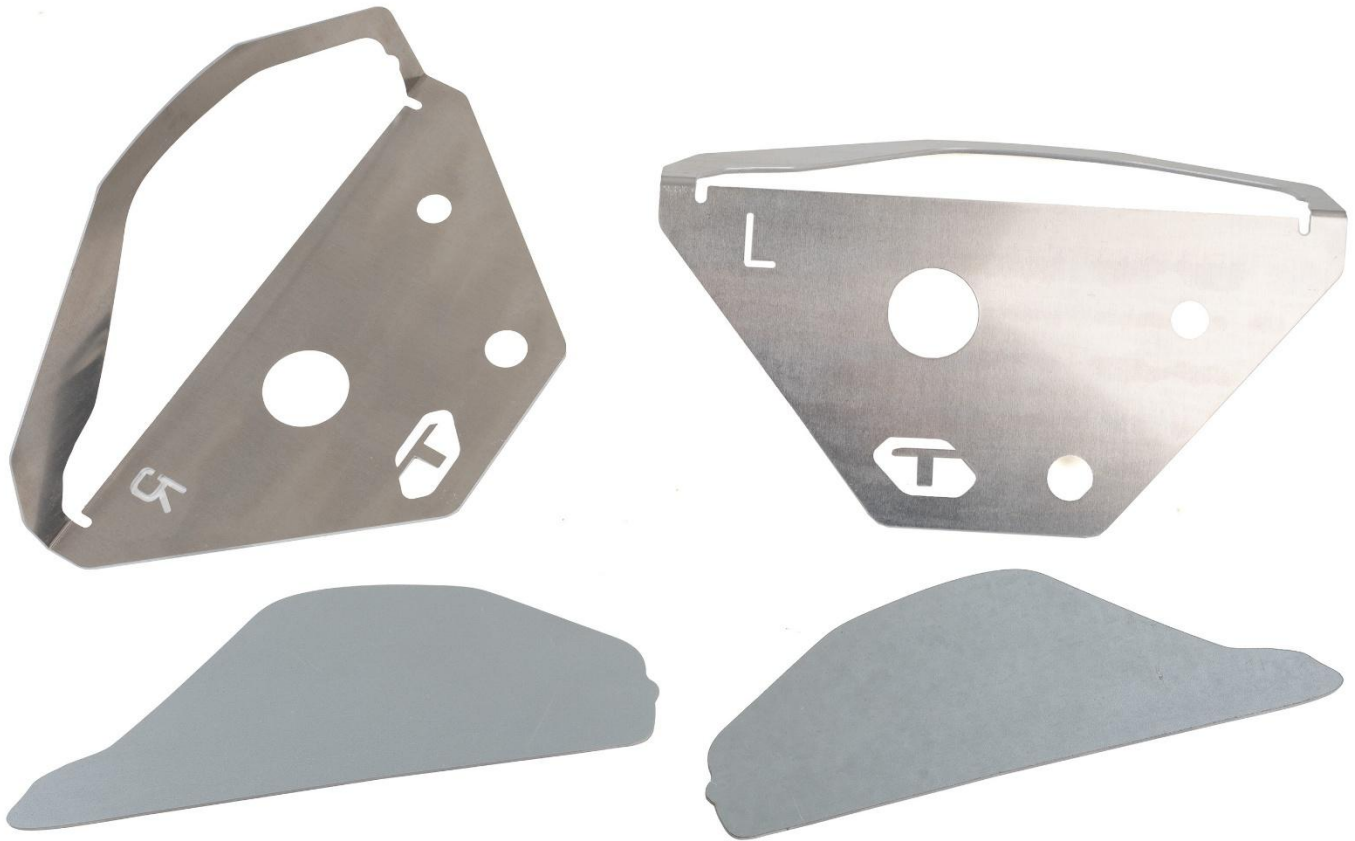


TEQSPORT THIRD GEN TACOMA BODY MOUNT CHOP KIT INSTALLATION MANUAL



This Installation Manual is intended for the following models:	
2016-2023	Toyota Tacoma

PROLOGUE:

Study these instructions completely before proceeding to assembly. The installer must have a thorough knowledge of automotive systems operation. If unfamiliar with any of the concepts outlined in this instruction, we recommend the installation be completed by a qualified professional.

WARNING!

Extreme caution should be taken when performing maintenance or performance upgrades to your vehicle. Please observe and abide by any Warning or Caution labels placed on the various components and tools used when servicing your vehicle. If you have any questions regarding installation or the various components included with the TEQSPORT Third Gen Tacoma Body Mount Chop Kit, consult with a Professional Mechanic or contact TEQSPORT for more information.

PARTS INCLUDED:

Item	Quantity	Description
1	1	Driver Side Template
2	1	Passenger Side Template
3	1	Driver Side Plate
4	1	Passenger Side Plate

TOOLS REQUIRED:

- Hydraulic Jack
- (2) 2-Ton (or greater) Jack Stands
- Cutoff Wheel
- Sawzall
- Spray Paint
- Grinder
- Welder
- Paint Marker
- Hammer

SAFETY REQUIREMENTS:

- Always wear safety glasses and any necessary protective garments. If using any fluids, chemicals, or solvents, a respirator is recommended.
- Always turn the ignition to the OFF position and disconnect the NEGATIVE battery terminal.
- Always use properly rated jack stands when working under your vehicle.
- Always keep limbs and parts away from moving drivetrain parts.
- Only operate the drivetrain in safe space and well-ventilated areas.

BEFORE YOU BEGIN:

Remove contents from the TEQSPORT Third Gen Tacoma Body Mount Chop Kit and verify that ALL necessary hardware is present.

This installation requires cutting and welding onto the Frame of your vehicle. If you are not comfortable cutting your Frame or capable of Welding, take your vehicle to a professional shop.

PROCEDURE:

1. Place the transmission in Park position (or in Reverse gear if equipped with a manual transmission). Apply the parking brake.
2. Loosen the lug nuts on the front wheels.
3. Locate the proper jacking points on the **vehicle's chassis** (refer to the **vehicle's Owner's Manual**). Raise and support the vehicle using a jack and jack stands.
4. Remove the Front Wheels and lug nuts from the vehicle.

NOTE: All *Figures* in this Installation Manual are shown on the Passenger Side of the vehicle. The process is the same for the Driver Side; it will just be mirrored.

5. Locate the Passenger Side Template. Position it on the Frame as shown. There are (3) three Holes on the bottom of the Template that will line up with the holes on the bottom of the Frame. *Figure 1.*

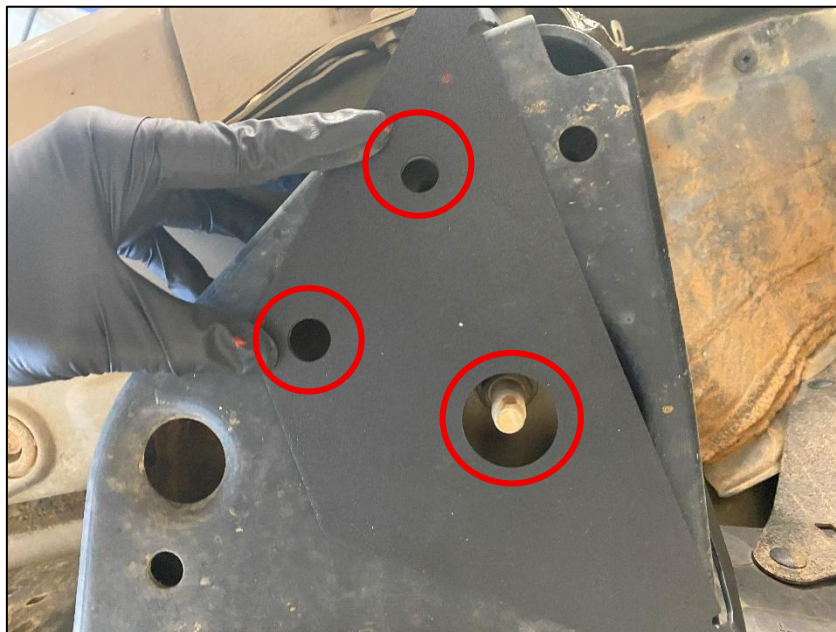


Figure 1

6. Once the Template is lined up, mark the inside of the Template with a Paint Marker. *Figure 2.*



Figure 2

7. Mark the Pinch Weld of the vehicle with a Paint Marker. This Pinch Weld will also need to be trimmed.
Figure 3.



Figure 3

8. Using a Cutoff Wheel or Sawzall, cut a few tabs into the Pinch Weld. *Figure 4.*

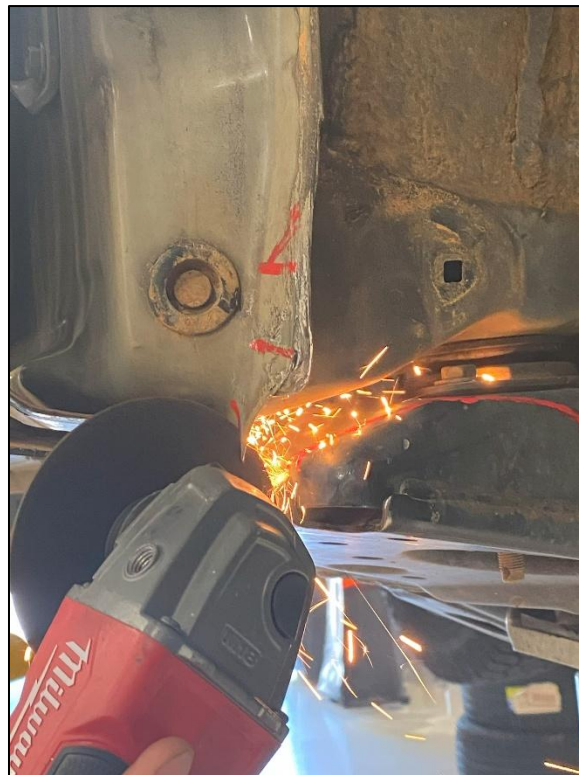


Figure 4

9. Hammer the Tabs flat to Wheel Well. *Figure 5.*



Figure 5

10. Using a Cutoff Wheel or Sawzall, cut the area marked in *Step 6*. Be careful not to cut too much. *Figure 6.*

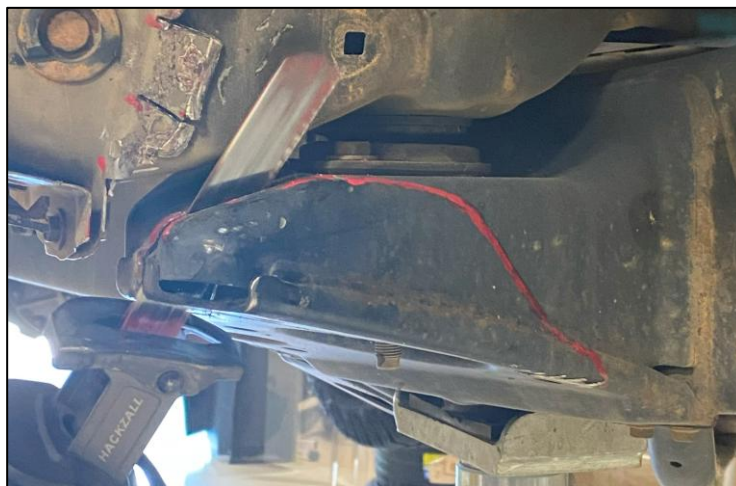


Figure 6

11. Use a Grinder to clean up any sharp edges and deburr the cuts made. *Figure 7.*



Figure 7

12. Locate the Passenger Side Plate. Place it over the Cut made in *Step 10*. Trim any excess Frame if needed.

13. Once the Plate is able to sit flush on the Frame, follow proper Welding procedures and techniques to weld the Plate to the Frame. *Figure 8.*



Figure 8

14. Paint any exposed metal to prevent corrosion. You can also grind down any high spots.
15. Repeat Steps 5-14 for the other side of the vehicle.
16. Reinstall the Wheels and Lug Nuts.
17. Turn the Vehicle to full lock on each side, check for clearance between the Wheel and the Pinch Weld. Clearance the Pinch Weld as necessary by hammering it flat where needed.
18. Repeat Step 17 with the vehicle on the ground.

END

Additional Technical Support:
Contact TEQSPORT at info@z1motorsports.com
Or call 770-832-7184 between 9am and 6pm ET