

# Z1 A61 TITAN CATCH CAN INSTALLATION MANUAL



This Installation Manual is intended for the following models:	
2016+	Nissan Titan

## PROLOGUE:

Study these instructions completely before proceeding to assembly. The installer must have a thorough knowledge of automotive systems operation. If unfamiliar with any of the concepts outlined in this instruction, we recommend the installation be completed by a qualified professional.

## WARNING!

Extreme caution should be taken when performing maintenance or performance upgrades to your vehicle. Please observe and abide by any Warning or Caution labels placed on the various components and tools used when servicing your vehicle. If you have any questions regarding installation or the various components included with the Z1 Off-Road A61 Titan Catch Can, consult with a Professional Mechanic or contact Z1 Off-Road for more information.

## **PARTS INCLUDED:**

Item	Quantity	Description
1	1	Z1 Assembled Catch Can
2	2	Banjo Fitting – Banjo (barb)
3	2	Banjo Fitting - Bolt
4	1	Catch Can Bracket
5	1	Driver Side Feed Hose
6	1	Driver Side Return Hose
7	1	Passenger Side Feed Hose
8	1	Passenger Side Return Hose
9	1	Catch Can “OUT” Port Hose
10	1	Catch Can “IN” Port Hose
11	4	Crush Washer
12	2	Silicone Tee Fitting
13	3	M4 x 8mm Screw
14	6	Hose Clamp
15	1	2.5 Ball-End Hex Screwdriver

## **TOOLS REQUIRED:**

- Ratchet
- Ratchet Extension(s)
- 10mm Socket/Wrench
- 8mm Allen/Hex Key
- 5mm Allen/Hex Key
- Pliers

## **SAFETY REQUIREMENTS:**

- Always wear safety glasses and any necessary protective garments. If using any fluids, chemicals, or solvents, a respirator is recommended.
- Always use properly rated jack stands when working under your vehicle.
- Always keep limbs and parts away from moving drivetrain parts.
- Always turn the ignition to the OFF position and disconnect the NEGATIVE battery terminal.
- Only operate drivetrain in safe space and well-ventilated areas.

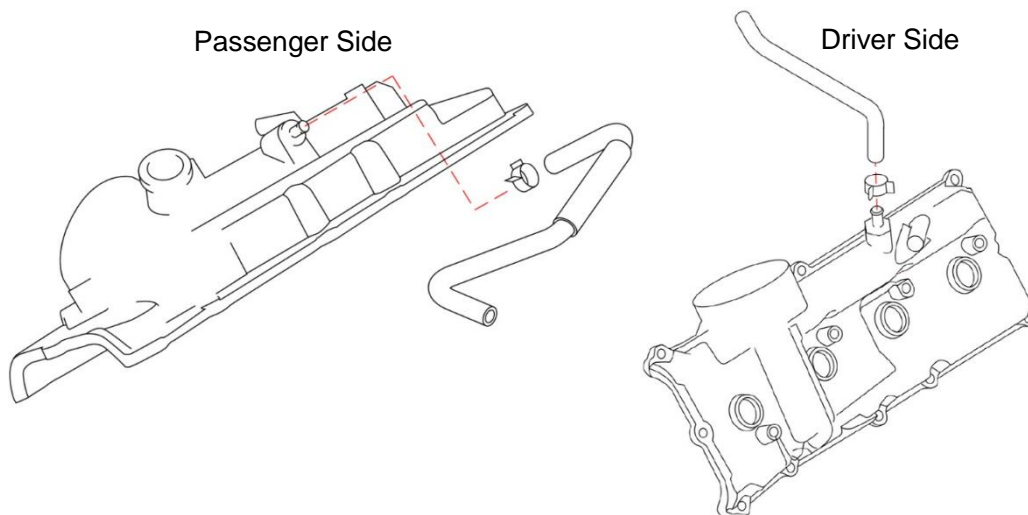
## **BEFORE YOU BEGIN:**

Remove contents from the Z1 Off-Road A61 Titan Catch Can and verify that ALL necessary hardware is present.

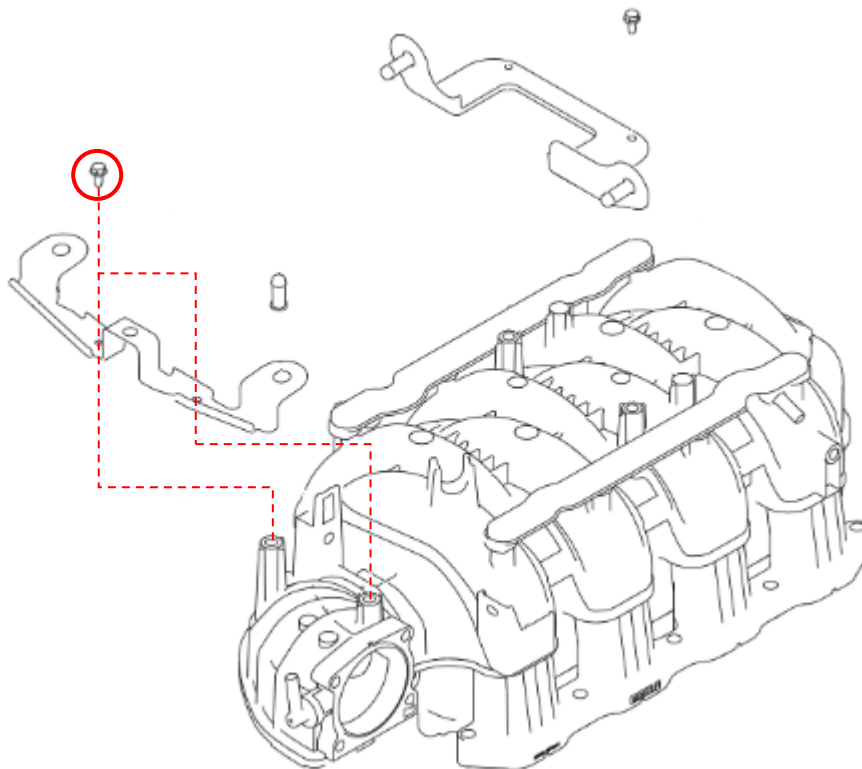
## **PROCEDURE:**

1. Place the transmission in Park position (or in Reverse gear if equipped with a manual transmission). Apply the parking brake.
2. Open hood and remove engine cover.

3. Remove the (2) OEM PCV hoses going from each valve cover to the intake plenum. Hoses are shown in the diagrams below.

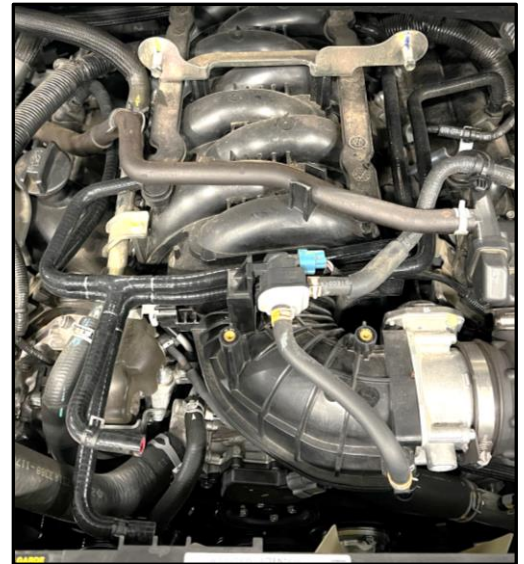
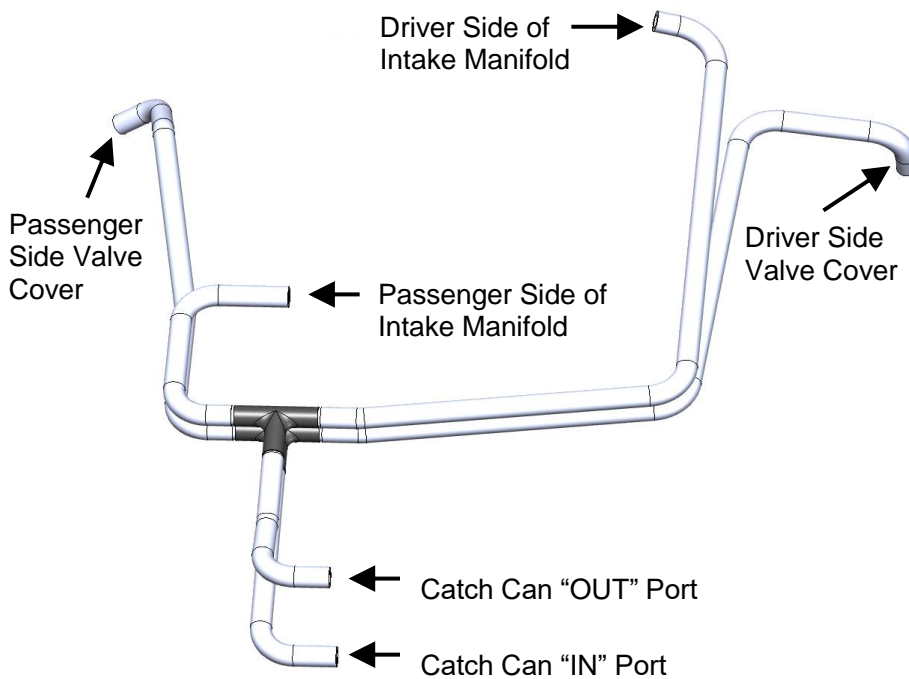


4. Remove the (2) bolts securing the front engine cover bracket to the intake manifold.

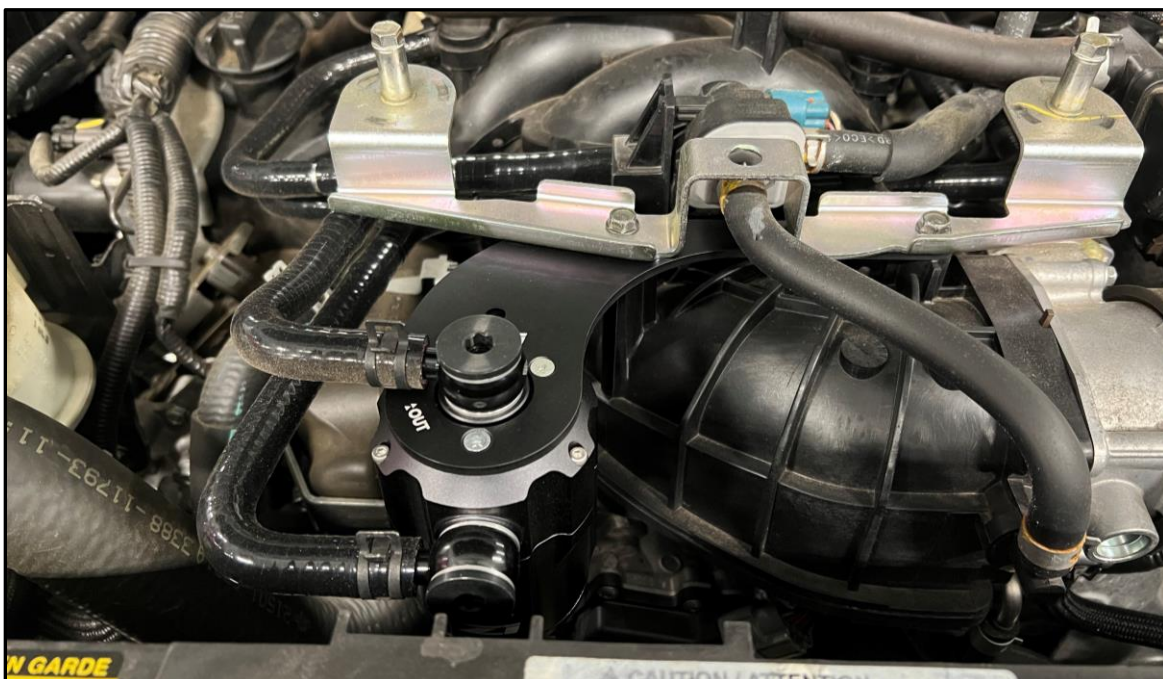


5. Locate all (6) silicone hoses and (2) silicone tees.

- Assemble the hoses and tees according to the diagram below, and install them onto the same ports the OEM hoses were removed from in step # 3. The hoses routing from the bottom of the tee's will be attached to the catch can at a later step.



- Locate Z1 assembled catch can, catch can bracket, (3) M4 x 8mm screws, (2) banjo fitting barbs, and (2) banjo fitting bolts. Attach the catch can to the bracket with (3) M4 screws, making sure the front of the catch can with the "IN" port is facing the front (as shown below).
- Insert a banjo fitting bolt through each banjo barb with a crush washer on both sides. Secure banjo fittings to catch can (as shown below).
- Sandwich the catch can bracket between the front engine cover bracket and the intake manifold. Secure the bracket with the (2) screws removed in step # 4 (as shown below).
- With a clamp on each end, attach hoses coming out of the tee's to the catch can (as shown below).



11. Using an 8mm Allen/hex key, tighten both banjo fitting bolts.
12. Reattach engine cover.
13. Assure all bolts and clamps are securely tightened. Inspect vehicle for loose components or issues.

## **END**

### **Additional Technical Support:**

Contact Z1 Off-Road at [info@z1offroad.com](mailto:info@z1offroad.com)  
Or call 678-839-8019 between 9am and 6pm ET

## **Drain Instructions**

1. While supporting the bottom of the catch can, use the supplied 2.5mm ball-end hex screwdriver to unscrew the 3 outer bolts on the top of the Z1 Oil Catch Can.

Note: **DO NOT** unscrew the (3) bolts securing the top of the catch can to the bracket. The back screw should be accessible through the access hole on the top of the bracket. You may need to loosen the top banjo bolt and rotate the banjo barb out of the way to access the hole.

2. Remove the bottom of the Z1 Oil Catch Can. Properly dispose of oil.
3. Reattach bottom of catch can.