

Z1 OFFROAD D41 UTILITY TRACK MOUNT KIT INSTALLATION MANUAL



This Installation Manual is intended for the following models:

2022+

Nissan Frontier (D41)

PROLOGUE:

Study these instructions completely before proceeding to assembly. The installer must have a thorough knowledge of automotive systems operation. If unfamiliar with any of the concepts outlined in this instruction, we recommend the installation be completed by a qualified professional.

WARNING!

Extreme caution should be taken when performing maintenance or performance upgrades to your vehicle. Please observe and abide by any Warning or Caution labels placed on the various components and tools used when servicing your vehicle. If you have any questions regarding installation or the various components included with the Z1 Off-Road D41 Utility Track Mount Kit, consult with a Professional Mechanic, or contact Z1 Off-Road for more information.

PARTS INCLUDED:

Item	Quantity	Description
1	1	Driver Side Utility Track
2	1	Passenger Side Utility Track
3	1	Utility Track Mount Kit
4	1	M6 Rivnut Tool
5	11	M8 x 1.25 Tapered Head Screws
6	4	Utility Track Hardware Kit

TOOLS REQUIRED:

- Ratchet
- Ratchet Extension(s)
- Assorted Metric Sockets
- Assorted Metric Wrenches
- 5mm Hex/Allen Key
- 4mm Hex/Allen Key
- Paint Marker
- Drill
- 3/8" Drill Bit
- Drill Stop
- Tape Measure

SAFETY REQUIREMENTS:

- Always wear safety glasses and any necessary protective garments. If using any fluids, chemicals, or solvents, a respirator is recommended.
- Always use properly rated jack stands when working under your vehicle.
- Always keep limbs and parts away from moving drivetrain parts.
- Always turn the ignition to the OFF position and disconnect the NEGATIVE battery terminal.
- Only operate drivetrain in safe space and well-ventilated areas.

BEFORE YOU BEGIN:

Remove contents from the Z1 Off-Road D41 Utility Track Mount Kit and verify that ALL necessary hardware is present.

PROCEDURE:

1. Place the transmission in Park position (or in Reverse gear if equipped with a manual transmission). Apply the parking brake.
2. Lower the tailgate of the vehicle.
3. Starting on the Driver Side of the vehicle, locate the (4) four Mounting Plates and order them as shown below. The shorter Plate with (4) four holes will be towards the rear of the vehicle. *Figure 1.*

NOTE: The Driver Side Orientation is shown below, the Passenger Side orientation is shown on *Page 4, Figure 2.* The Installation Process is the same for both sides, however the order of the mounting plates is different.

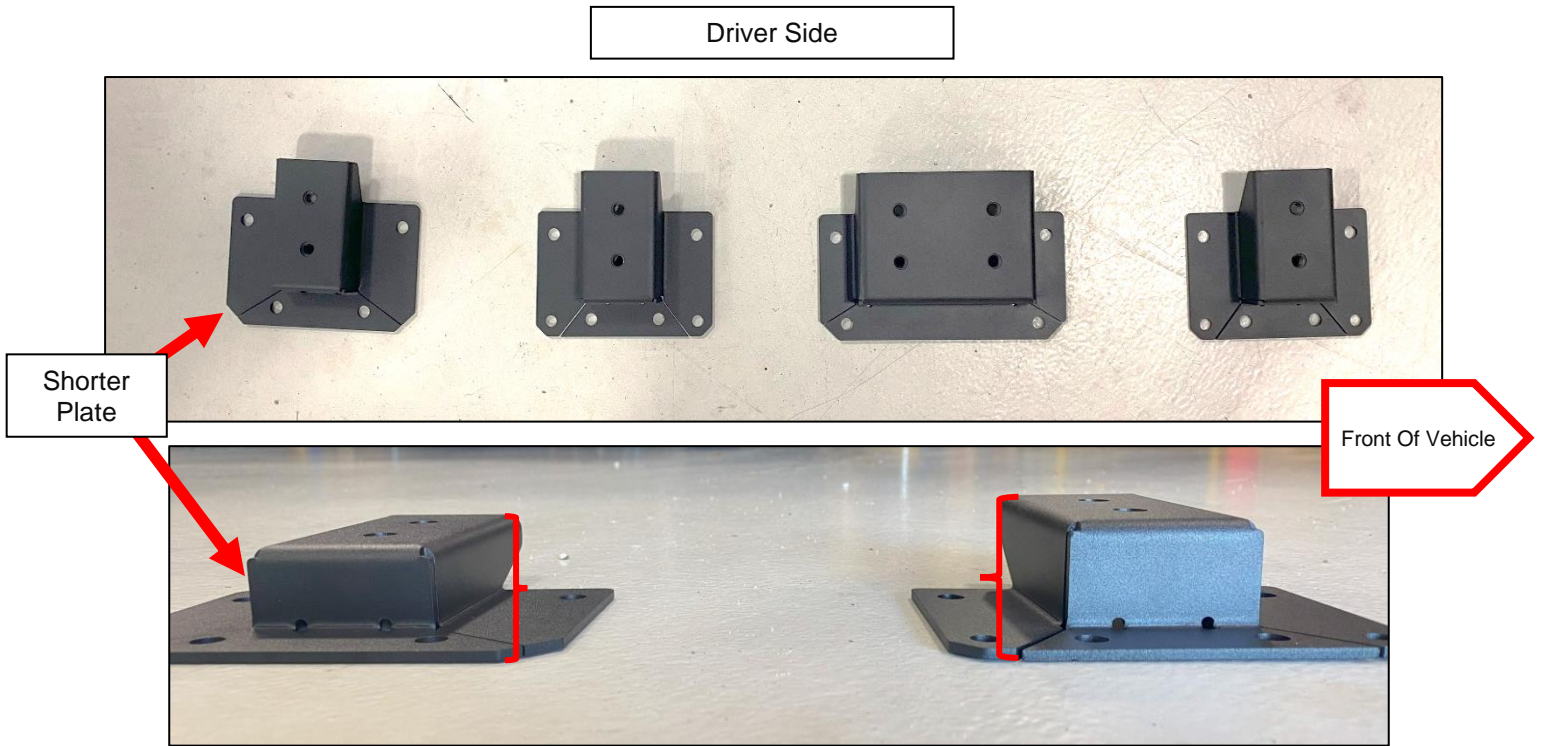


Figure 1

Passenger Side

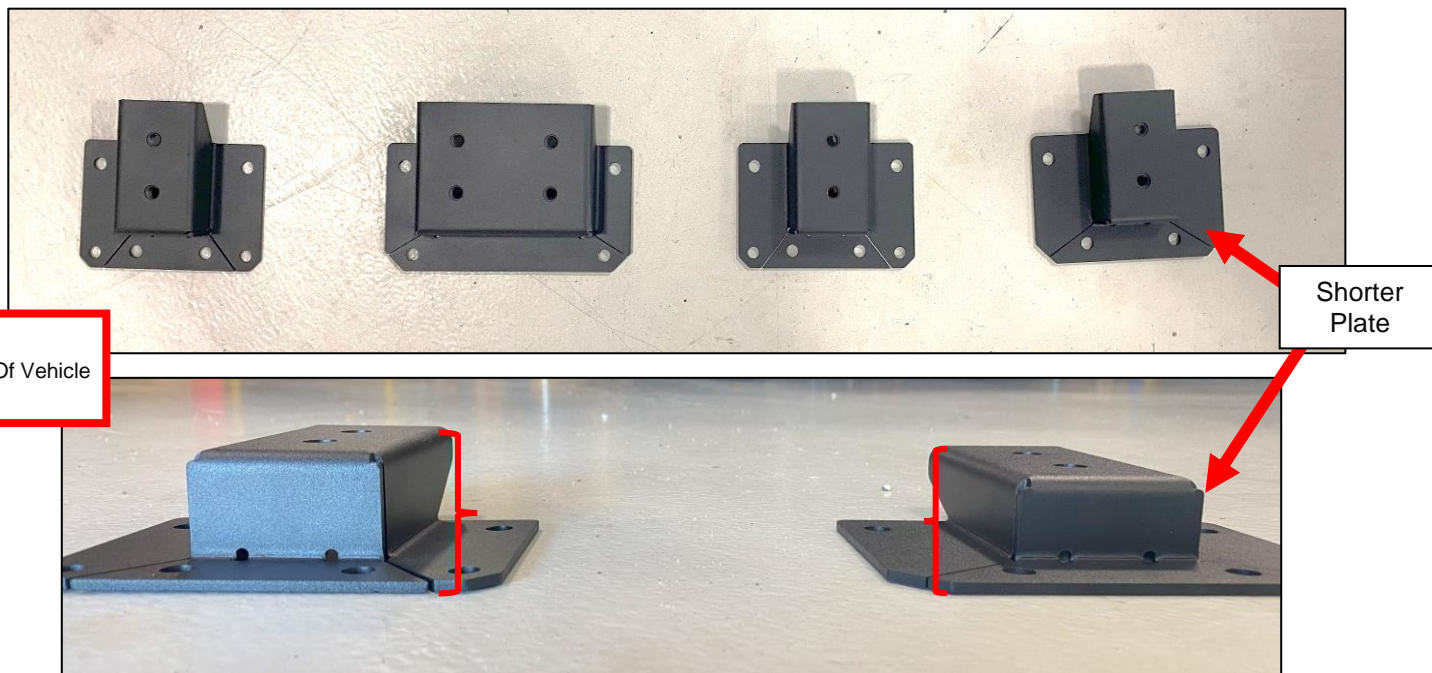


Figure 2

4. Locate the Driver Side Utility Track and the (11) eleven Tapered Head Screws. Secure the Utility Track to the Mount Plates using (10) ten of the Tapered Head Screws as shown below in *Figure 3*.



Figure 3

5. The other Tapered Head Screw will be used to help support the Utility Track Assembly to mark its position. It will be threaded into an existing hole in the Truck Bed towards the Cab of the vehicle. *Figure 4*.



Figure 4

6. Position the Utility Track Assembly and insert the Tapered Head Screw into the Mounting Plate and Hole mentioned in *Step 5*. This will allow the Utility Track to pivot and be adjusted. *Figure 5*.

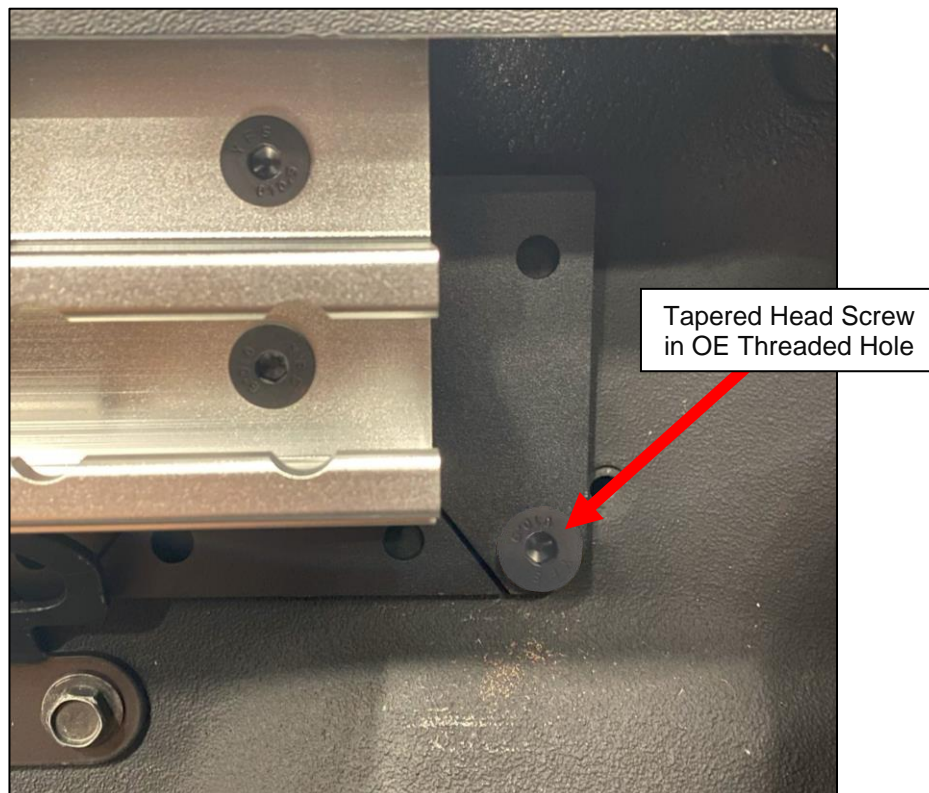


Figure 5

7. Pivot the Utility Track up and into position. The Utility Track should sit about 1.125" from the lip of the Bed. Secure the Utility Track in this position with a Clamp or other similar tool. *Figure 6.*

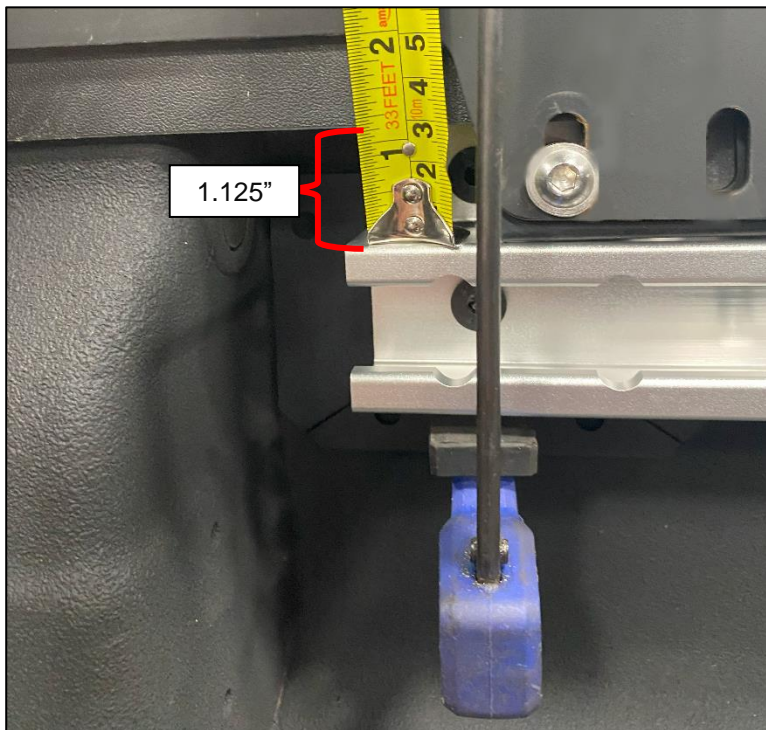


Figure 6

8. With the Utility Track in position and secured, use a Paint Pen to Mark all the open holes in the Utility Track Mounts. *Figure 7.*

NOTE: Mark the (2) two **INSIDE** holes that are visible on the (2) two smaller Mounts.

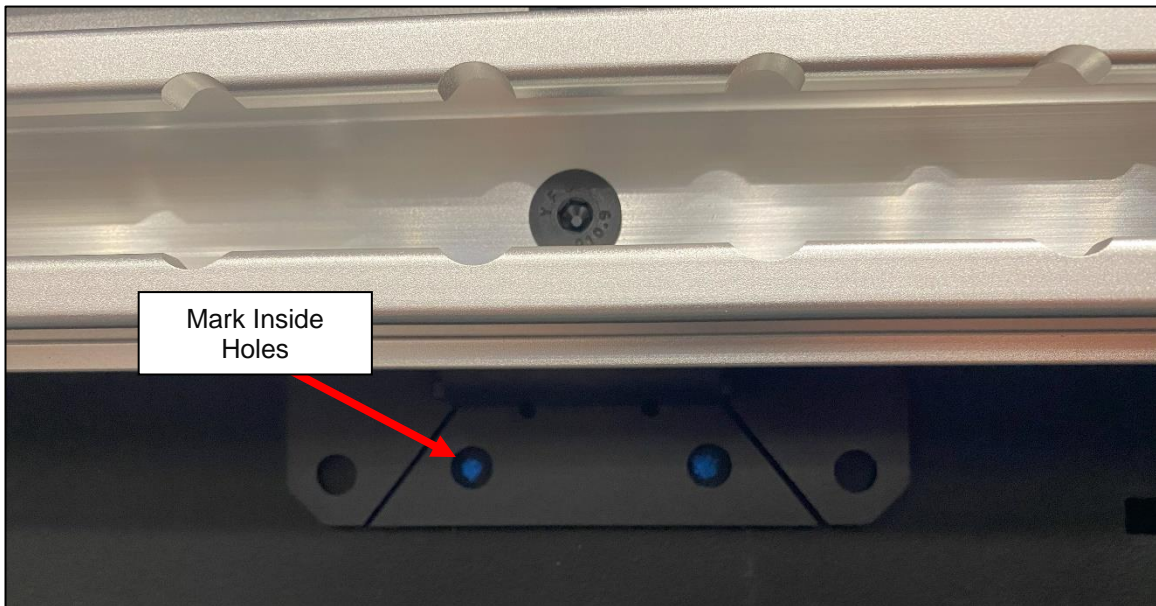
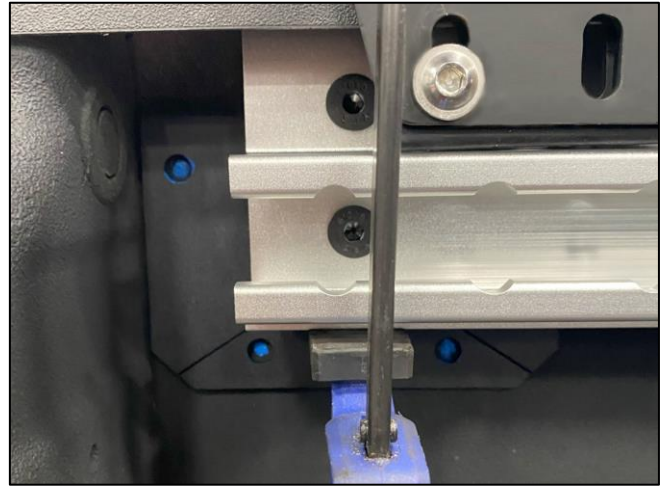
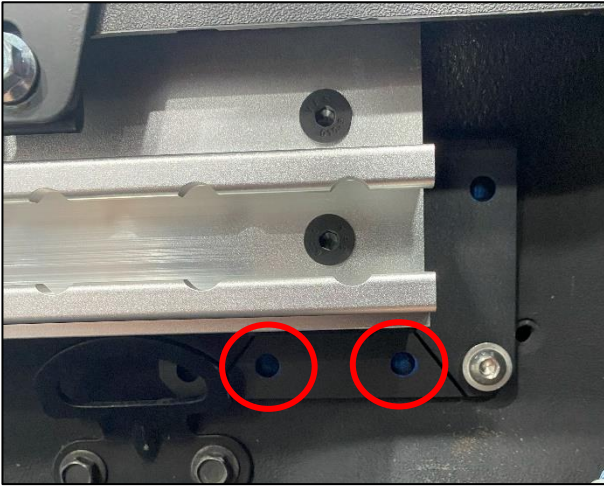


Figure 7

9. With the Holes marked, remove the (1) one Tapered Head Screw securing the Utility Track to the vehicle, and remove the Utility Track. You should have (9) nine marks made. *Figure 8.*



Figure 8

10. Remove the (10) ten Tapered Head Screws securing the Utility Track to the mounts. Keep the Mounts in order for the next step.

11. Line up the Mounts with the Marks made in *Step 8*. Once positioned and secure, mark the remaining holes in each mount. Line them up as best you can as this is where you will drill in the upcoming steps. *Figure 9*.

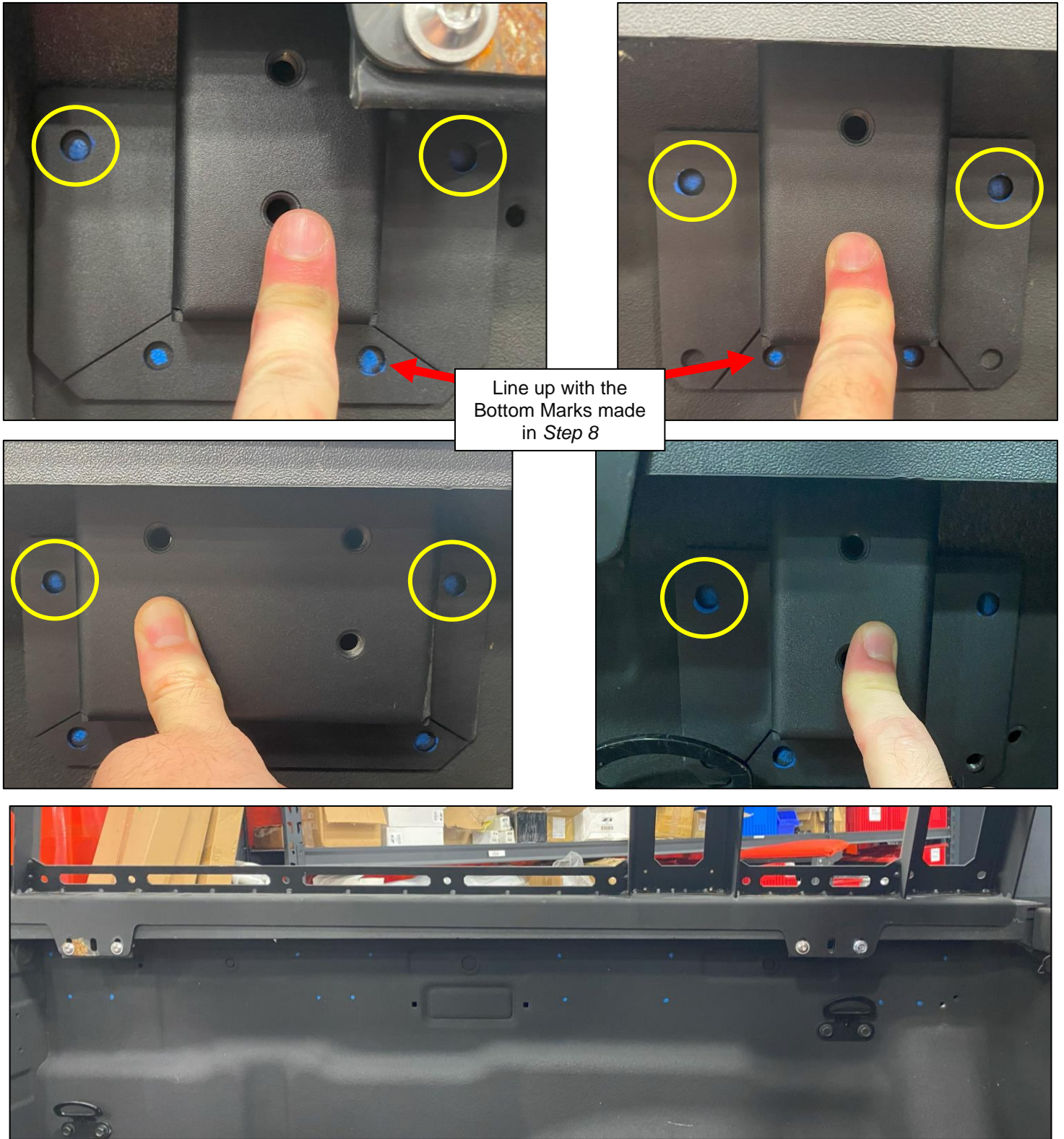


Figure 9

12. Use a Center Punch on each of the Marks made in *Step 8* and *11* to create a Center Mark for drilling. *Figure 10*.

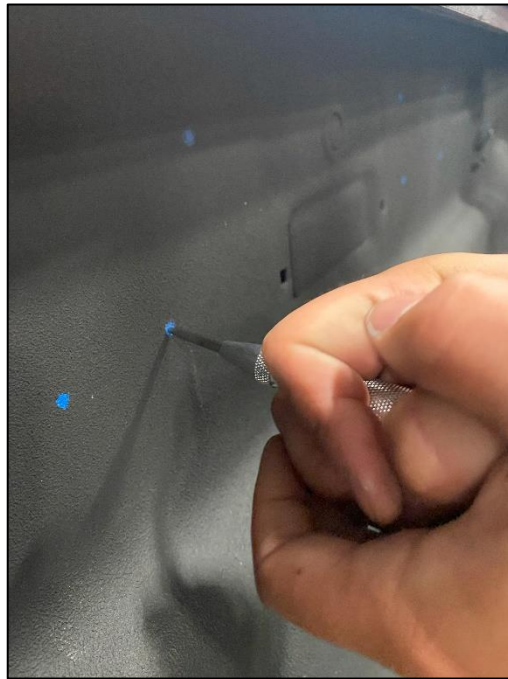


Figure 10

13. Locate a 3/8" Drill Bit and a Drill Stop. A Drill Stop is necessary to prevent the Drill Bit from hitting the outside of the Truck Bed when drilling. Leave only a minimal amount of the Drill Bit exposed with the Drill Stop Installed. *Figure 11*.

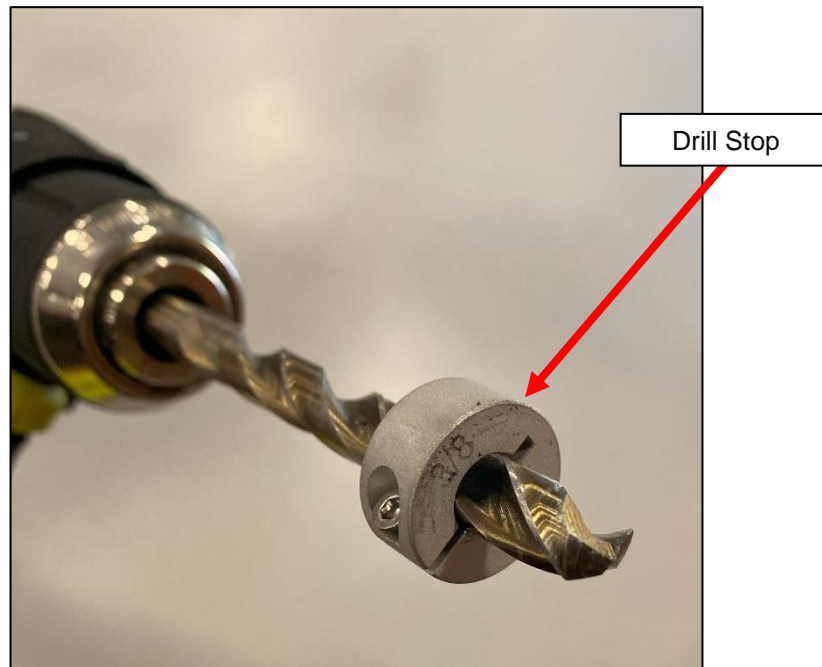


Figure 11

14. Drill through all the Marks made in *Step 8* and *11* with the 3/8" Drill Bit. *Figure 12.*



Figure 12

15. Use a small amount of Touch Up Paint to cover the newly drilled holes to prevent corrosion of the newly exposed metal.

16. Locate the M6 Rivnut Tool and (16) sixteen Plus Nuts. Install (1) one Plus Nut into each hole drilled in *Step 14. Figure 13* and *Figure 14*. If you have a Plus Nut Installation tool, it can be used, as this will speed up the process of this Step.

NOTE: Use the Rivnut Tool as shown below. Assemble the Tool and thread the pieces together to have as many exposed threads of the M6 Bolt as possible. After the Tool is assembled, thread a Plus Nut onto the M6 Bolt until it is flush with the face of the Tool.

Insert the Plus Nut into a drilled hold the 17mm Nut still with a Wrench and turn the 14mm Reverse Threaded Nut clockwise to pull the M6 Bolt out to form the Plus Nut and lock it into place. There will be resistance turning the 14mm Nut at first, then it will get easier. Once the Resistance starts getting difficult again, stop. Remove the M6 Bolt from the Plus Nut and reset the tool for the installation of the next Plus Nut.

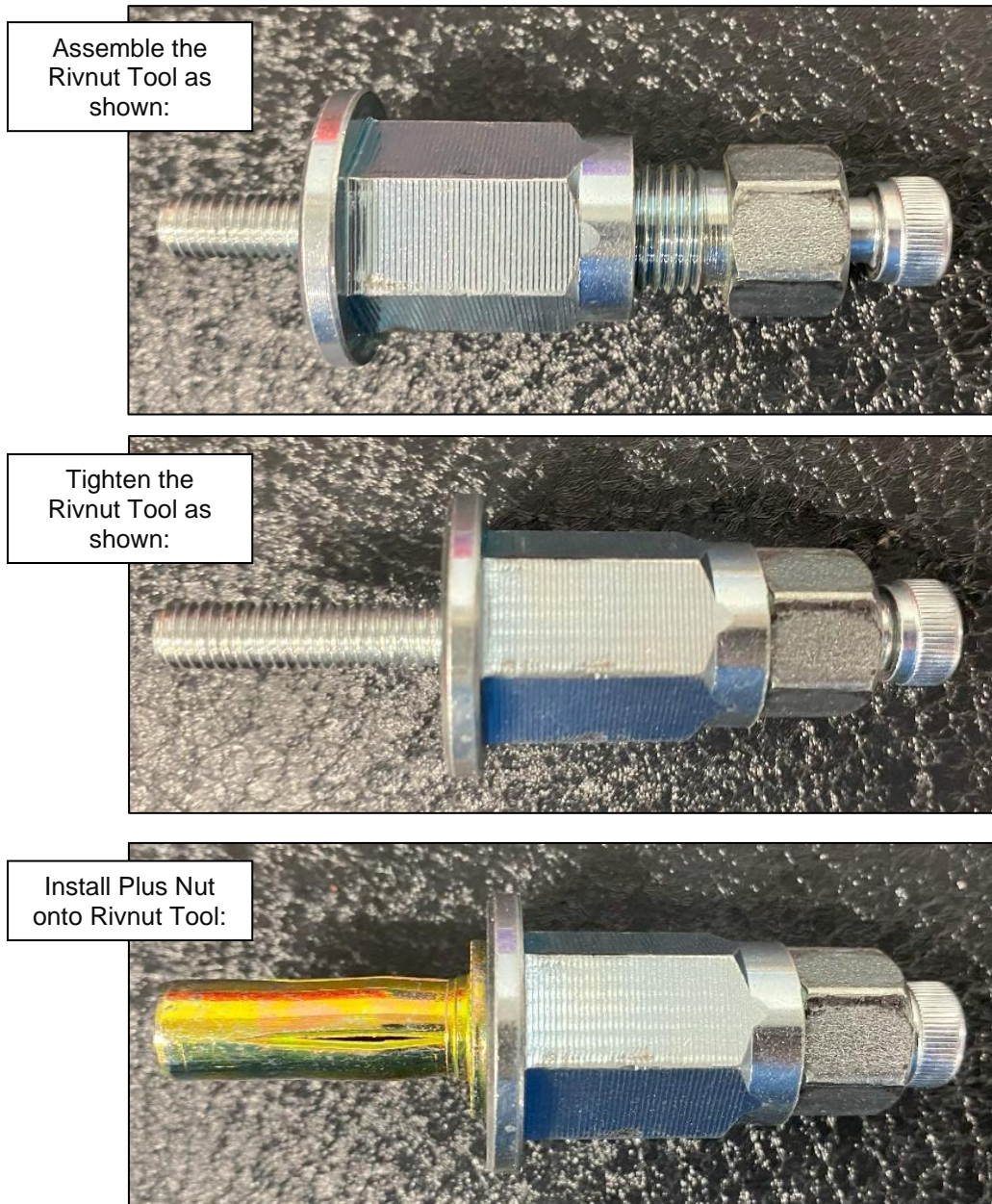


Figure 13

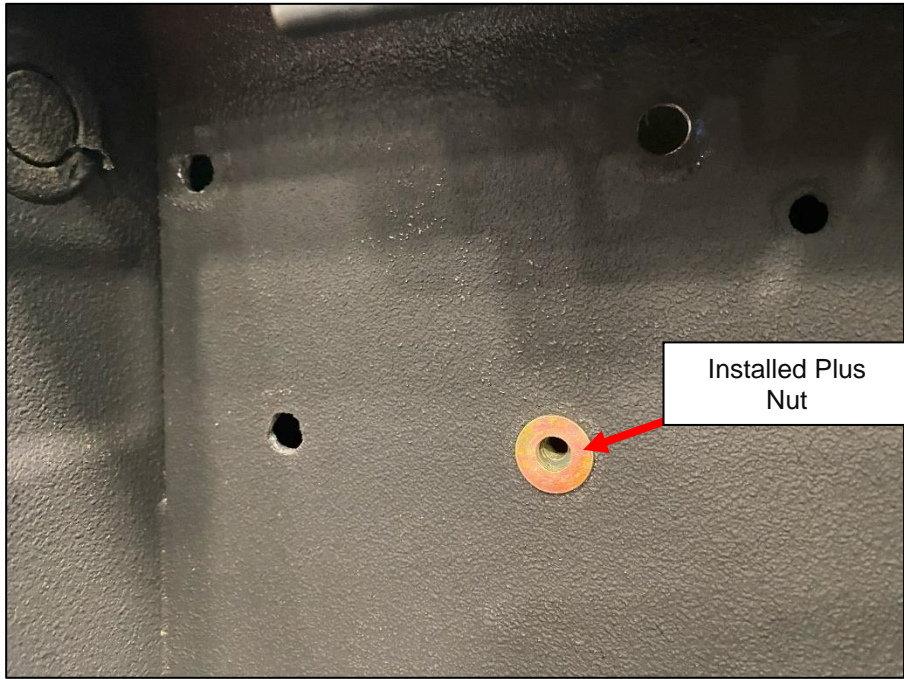


Figure 14

17. Locate (16) sixteen Button Head Screws. Secure each Mount to the Truck Bed and Plus Nuts with the Button Head Screws. Make sure to have the Shorter Mount located at the Rear of the Truck Bed. *Figure 15.*

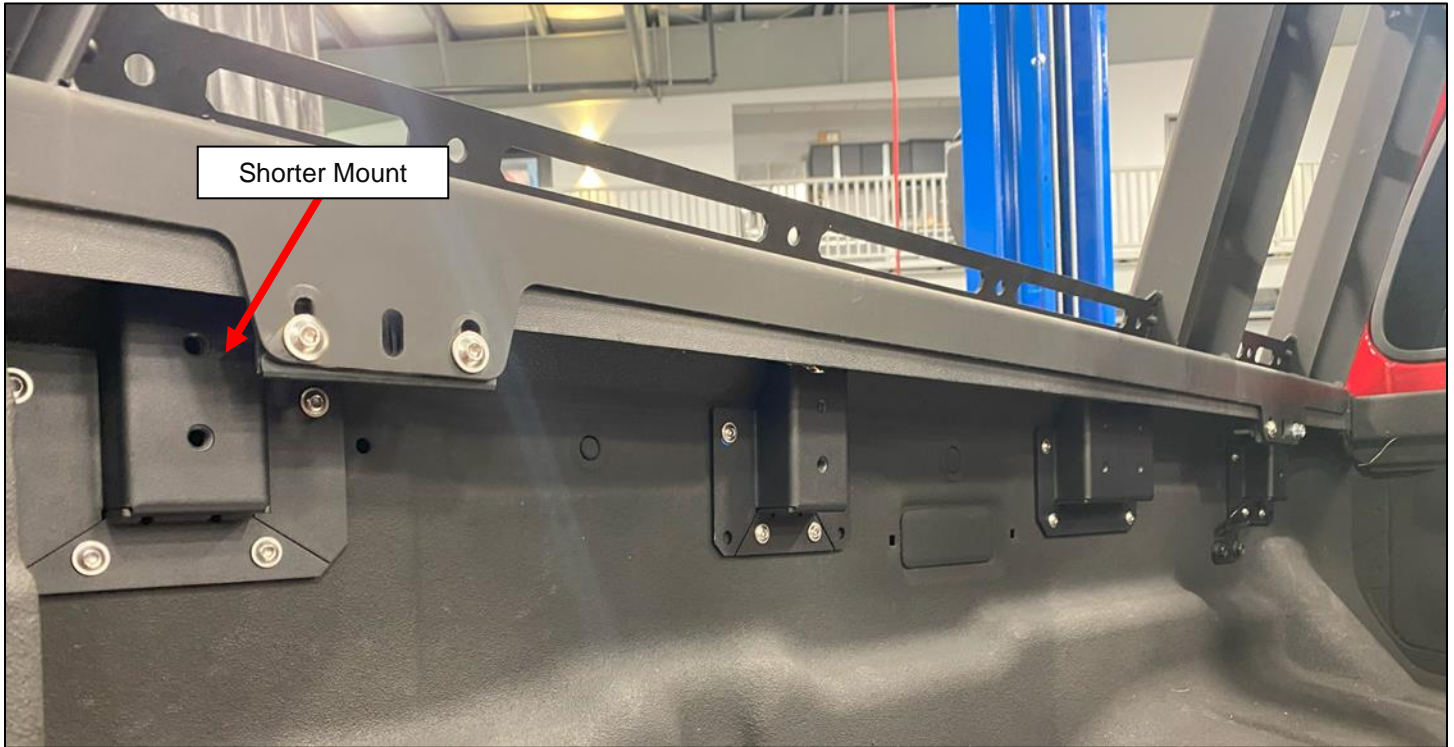


Figure 15

18. Locate (10) ten Button Head Screws, (10) ten Washers, and (10) ten Plastic Retaining Washers. Install a Button Head Screw with Washer into the Mounting Holes of the Utility Track, and secure with a Plastic Retaining Washer on the back. *Figure 16.*

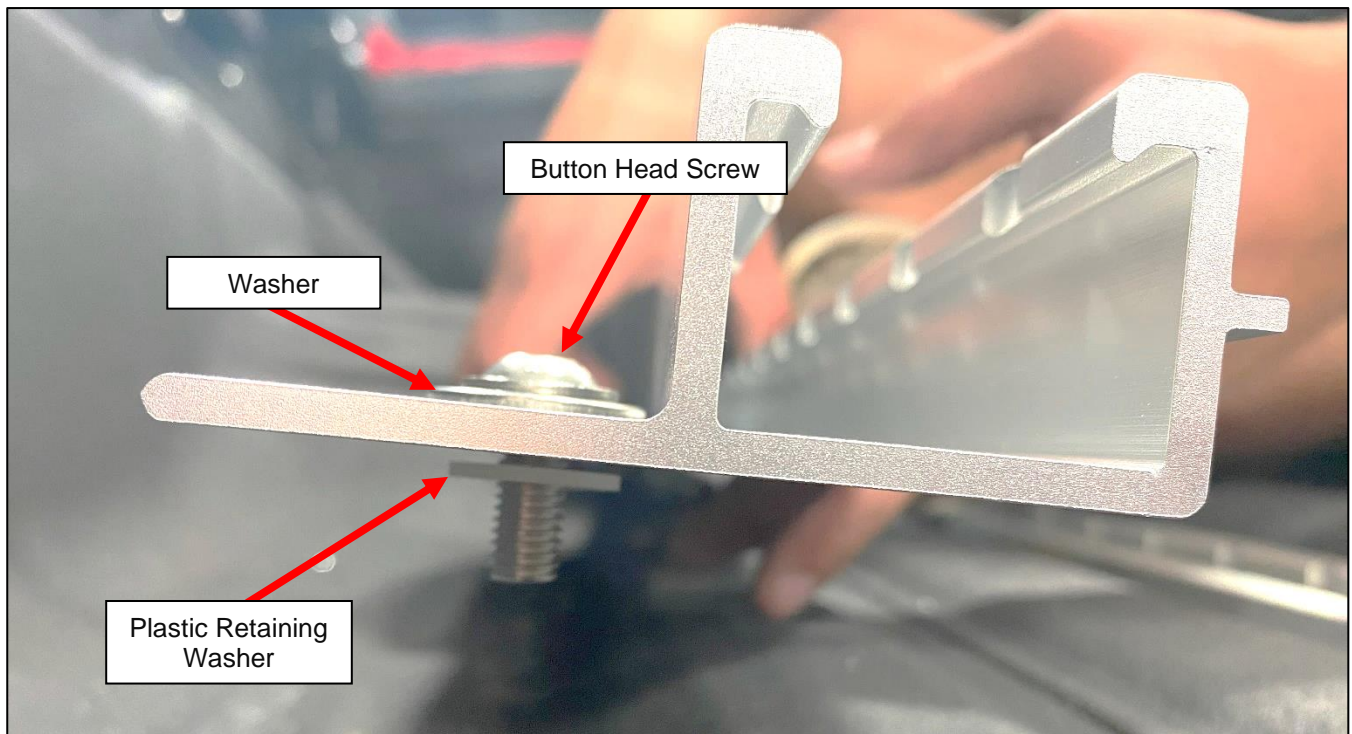


Figure 16

19. Install the Utility Track onto the bed of truck, using the (10) ten Button Head Screws from *Step 18* to secure the Utility Track to the Mounts. *Figure 17*.

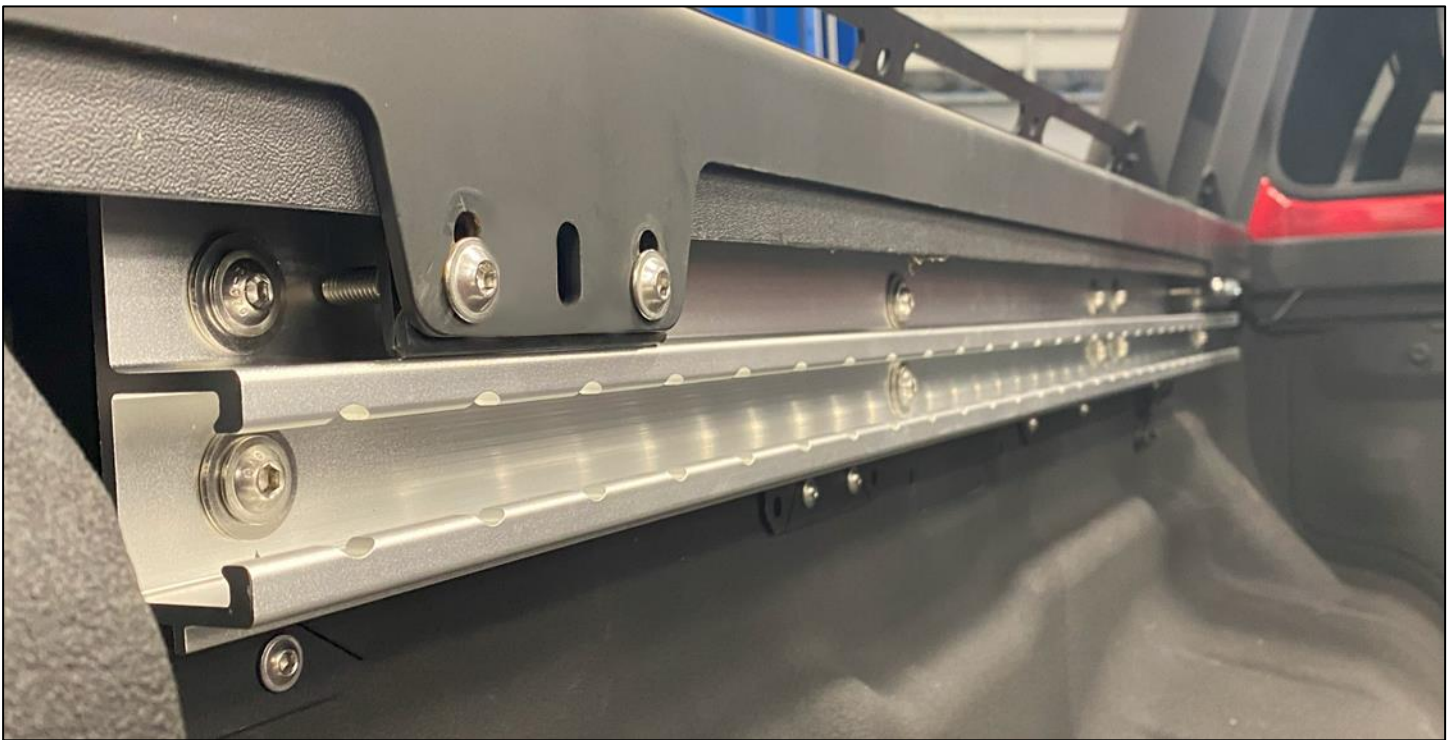


Figure 17

20. Repeat *Steps 3-19* for the Passenger Side of the vehicle. The mounts will be mirrored from the Driver Side.

END

Additional Technical Support:
Contact Z1 Off-Road at info@z1offroad.com
Or call 678-839-8019 between 9am and 6pm ET