

Z1 EVAP BREATHER KIT INSTALLATION MANUAL



This Installation Manual is intended for the following models:	
2005-2015	Nissan Xterra (N50)
2005-2021	Nissan Frontier (D40)

PROLOGUE:

Study these instructions completely before proceeding to assembly. The installer must have a thorough knowledge of automotive systems operation. If unfamiliar with any of the concepts outlined in this instruction, we recommend the installation be completed by a qualified professional.

WARNING!

Extreme caution should be taken when performing maintenance or performance upgrades to your vehicle. Please observe and abide by any Warning or Caution labels placed on the various components and tools used when servicing your vehicle. If you have any questions regarding installation or the various components included with the Z1 Off-Road EVAP Breather Kit, consult with a Professional Mechanic, or contact Z1 Off-Road for more information.

PARTS INCLUDED:

Item	Quantity	Description
1	1	Hose
2	3	Hose Clamp
3	1	Barbed Filter
4	1	Reduction Coupler
4	1	Zip Tie

TOOLS REQUIRED:

- Ratchet
- Ratchet Extension(s)
- Assorted Metric Sockets
- Assorted Metric Wrenches
- Scissors

SAFETY REQUIREMENTS:

- Always wear safety glasses and any necessary protective garments. If using any fluids, chemicals, or solvents, a respirator is recommended.
- Always use properly rated jack stands when working under your vehicle.
- Always keep limbs and parts away from moving drivetrain parts.
- Always turn the ignition to the OFF position and disconnect the NEGATIVE battery terminal.
- Only operate drivetrain in safe space and well-ventilated areas.

BEFORE YOU BEGIN:

Remove contents from the Z1 Off-Road EVAP Breather Kit and verify that ALL necessary hardware is present.

PROCEDURE:

1. Place the transmission in Park position (or in Reverse gear if equipped with a manual transmission). Apply the parking brake.
2. Open the Rear Hatch or lower the Tailgate of the Vehicle.
3. Remove the (2) two bolts securing the Driver Side Taillight to the vehicle. *Figure 1.*



Figure 1

4. Remove the Driver Side Taillight. *Figure 2.*

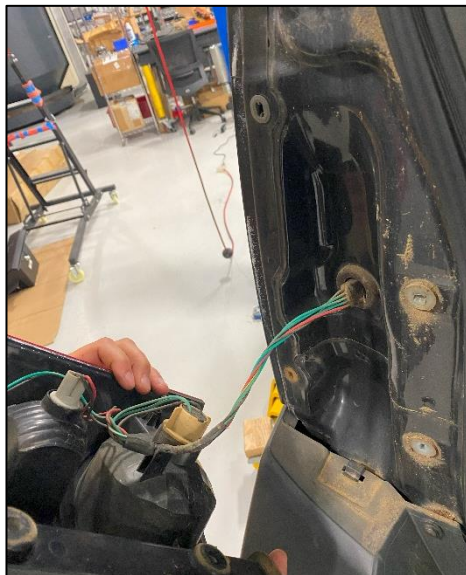


Figure 2

5. Locate the Hose, Barbed Filter, and (1) one small Hose Clamp. Install the Filter into one end of the Hose and secure with the Hose Clamp. *Figure 3.*

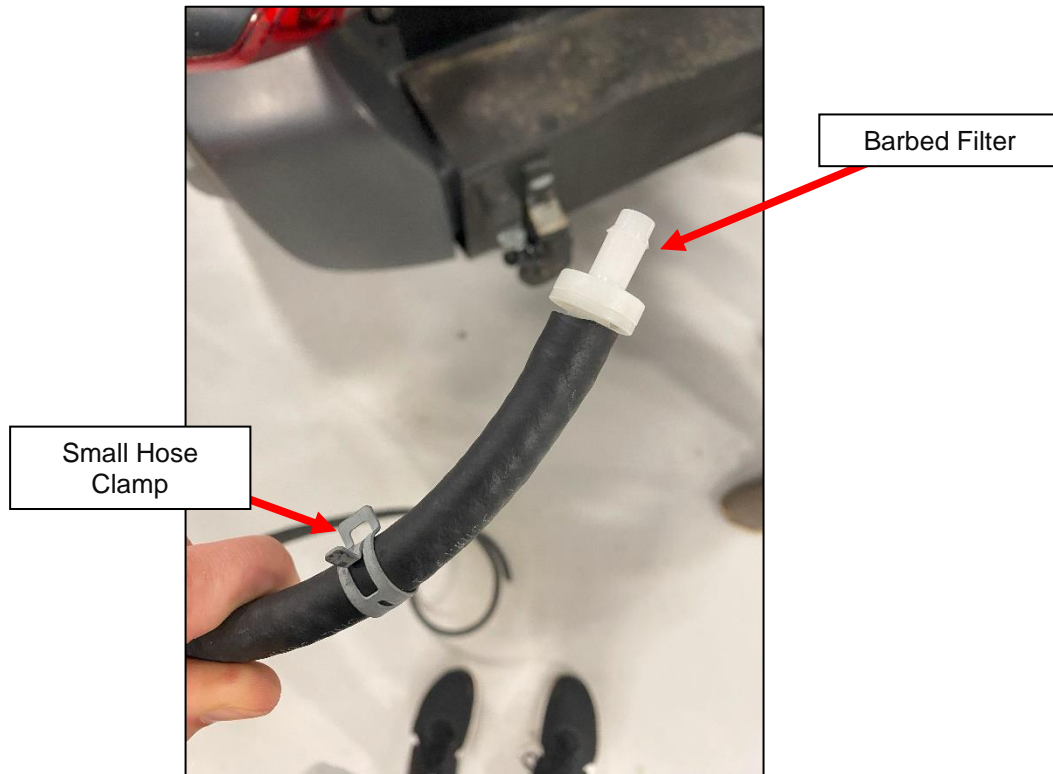


Figure 3

6. Feed the open end of the Hose through the opening at the bottom of the Taillight Mounting Position until the Barbed Filter is almost through. *Figure 4.*

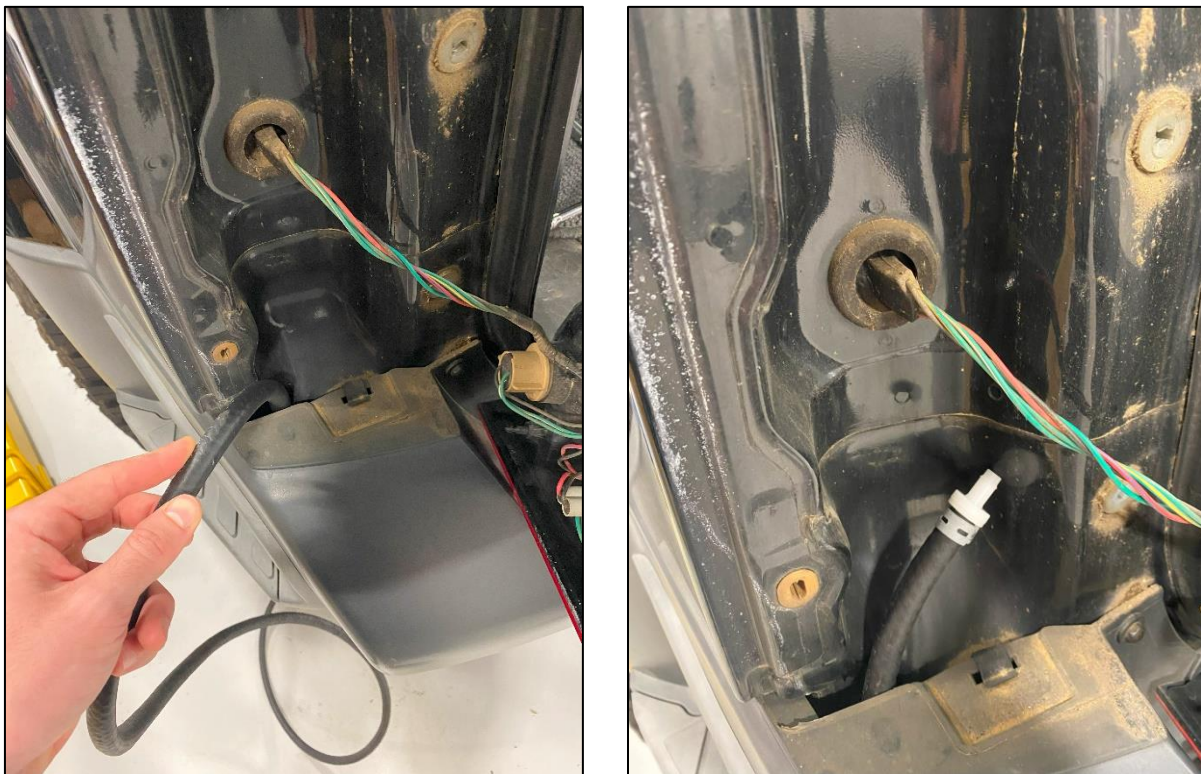


Figure 4

7. Underneath the vehicle, locate the Hose. It can be routed in multiple ways, we routed it behind the EVAP Canister and up over the Frame Rail to the OE EVAP Breather.
8. Disconnect the OE EVAP Breather from the Frame Rail of the Vehicle. *Figure 5.*

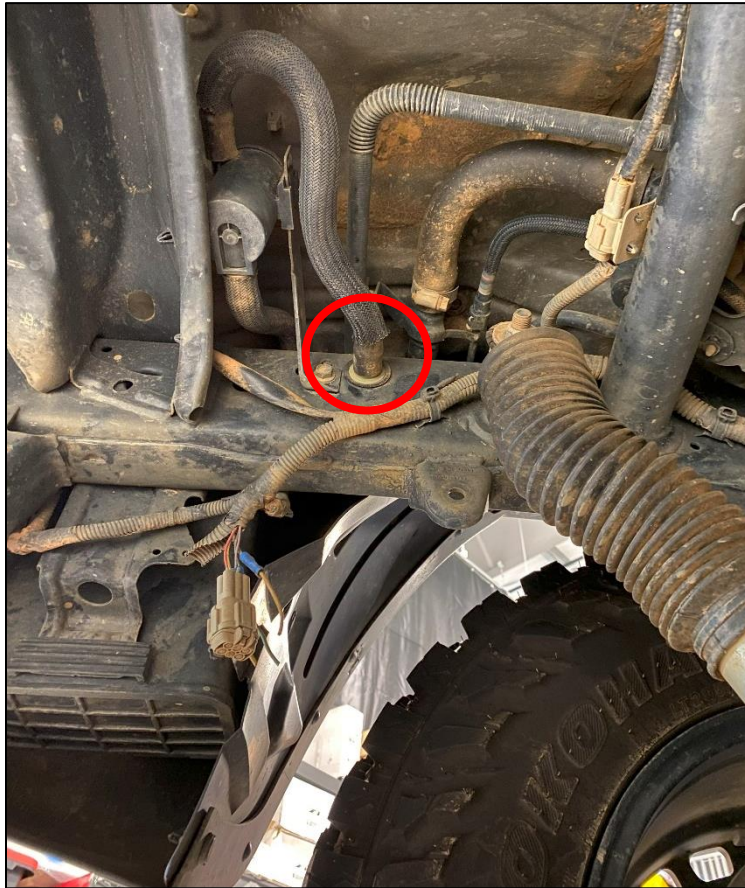


Figure 5

9. Install the larger end of the Reduction Coupler into the OE EVAP Breather and secure the Coupler with the Larger Hose Clamp. *Figure 6.*

NOTE: The end of the OE EVAP Breather Hose may need to be trimmed if the Reduction Coupler is loose when installed. The end of the Hose can be formed to be wider after years of it being on the vehicle.

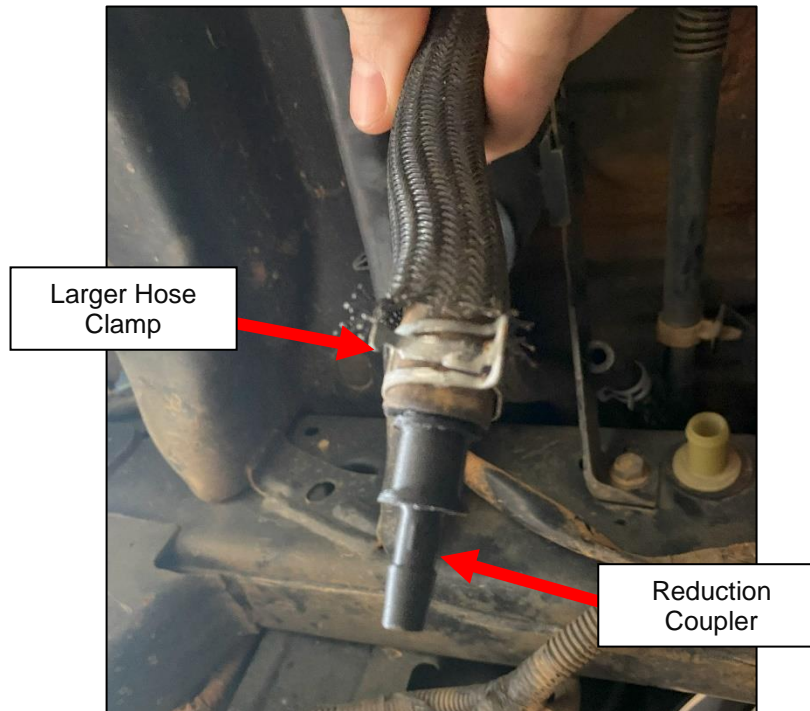


Figure 6

10. Determine the necessary length of the new hose to meet up with the OE EVAP Breather Hose and cut it to length.
11. Install the open end of the Hose onto the smaller end of the Reduction Coupler and secure it with the last Hose Clamp. *Figure 7.*



Figure 7

12. Position the new Breather Hose as desired and secure it with Zip Ties. *Figure 8.*



Figure 8

13. Reinstall the Taillight with the OE Hardware. Position the Hose and Breather to be seated behind the Taillight without interfering with the Wiring Harnesses.

END

Additional Technical Support:
Contact Z1 Off-Road at info@z1offroad.com
Or call 678-839-8019 between 9am and 6pm ET