

Z1 FRONTIER FLOOR UTILITY TRACK CHANNEL INSTALLATION MANUAL



This Installation Manual is intended for the following models:	
2005-2021	Nissan Frontier D40
2022+	Nissan Frontier D41

PROLOGUE:

Study these instructions completely before proceeding to assembly. The installer must have a thorough knowledge of automotive systems operation. If unfamiliar with any of the concepts outlined in this instruction, we recommend the installation be completed by a qualified professional.

WARNING!

Extreme caution should be taken when performing maintenance or performance upgrades to your vehicle. Please observe and abide by any Warning or Caution labels placed on the various components and tools used when servicing your vehicle. If you have any questions regarding installation or the various components included with the Z1 Off-Road Frontier Floor Utility Track Channel, consult with a Professional Mechanic or contact Z1 Off-Road for more information.

PARTS INCLUDED:

Item	Quantity	Description
1	2	Utility Track Floor Rail
2	8	M8 Square Washer
3	2	M8 x 20mm Flange Button Head Screw
4	4	M8 x 30mm Flange Button Head Screw
5	4	M8 x 50mm Flange Button Head Screw
6	8	M8 Nylon Lock Nut
7	10	M8 Self Flat Washer
8	10	M8 Self Retaining Washer

TOOLS REQUIRED:

- Hydraulic Jack
- (2) 2-Ton (or greater) Jack Stands
- Ratchet
- Ratchet Extension(s)
- 10mm Socket/Wrench
- 13mm Socket/Wrench
- 5mm Allen/Hex Key
- Pilot Hole Drill Bit
- 8mm or 5/16" Drill Bit
- Drill
- Painters Tape
- Torque Wrench
- M8x1.25 Tap

SAFETY REQUIREMENTS:

- Always wear safety glasses and any necessary protective garments. If using any fluids, chemicals, or solvents, a respirator is recommended.
- Always use properly rated jack stands when working under your vehicle.
- Always keep limbs and parts away from moving drivetrain parts.
- Always turn the ignition to the OFF position and disconnect the NEGATIVE battery terminal.
- Only operate drivetrain in safe space and well-ventilated areas.

BEFORE YOU BEGIN:

Remove contents from the Z1 Off-Road Frontier Floor Utility Track Channel and verify that ALL necessary hardware is present.

PROCEDURE:

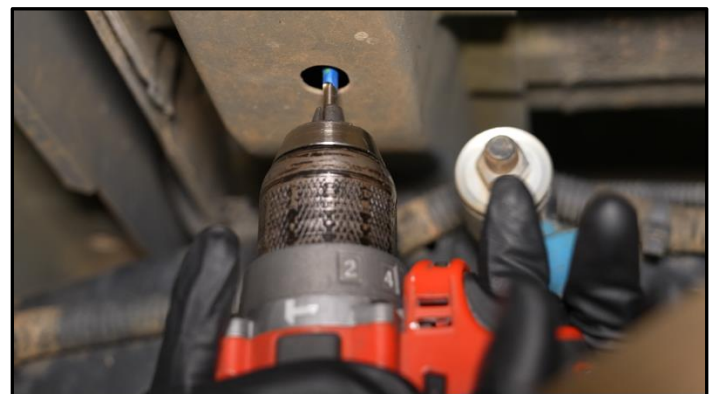
1. Place the transmission in Park position (or in Reverse gear if equipped with a manual transmission). Apply the parking brake.
2. Locate proper jacking points on vehicle's chassis (refer to vehicle's Owner Manual). Raise and support vehicle using jack & jack stands. Make sure the truck is stable as you will likely be climbing in and out several times.
3. Using the supplied tool kit located behind the rear seats, lower the spare tire. Once lowered, lift up the tire, rotate the collar and insert it through the center bore to remove the tire.



4. Locate the cross-brace on the underside of the truck bed, near the front. There is a round hole on the driver side above the gas fill hose, and an oval hole on the passenger side. Above the holes are nuts that are welded to the underside of the bed that will be utilized to mount the Z1 Utility Track rails. The driver side hole is partially blocked by the fuel filler neck hose (shown with arrow below). If you have a long drill bit this may not be an issue. Otherwise, you can either muscle the hose to the side while drilling, or remove the 10mm hose clamp (circled below) and remove the hose to provide more access.



5. Apply some tape to a small drill bit leaving just a few millimeters of the end exposed, this is to protect the threads of the nuts. Using that small drill bit, drill a pilot hole through the bottom side of the nuts in the cross-brace.



6. Once the pilot hole is drilled, from the inside of the truck bed and using either a step drill bit or regular drill bit, drill the pilot holes out to 8mm or 5/16".



7. Using a M8x1.25 thread chaser or tap, chase the nuts that were drilled out just incase the drill bit marred up the threads.

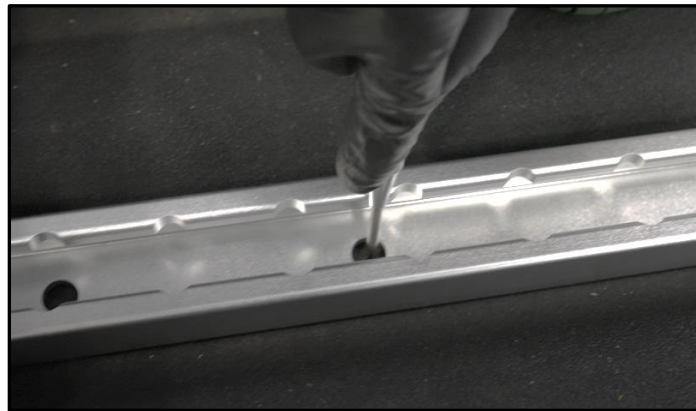


8. It is recommended to remove the drain plugs in the groove of the truck bed to allow water and debris to drain out. You can choose to leave them in but if you ever want to drain the bed later it would require remove the rails.
9. Locate the (2) bed floor rails and (2) M8 x 20mm bolts. Position the rails into the truck bed with the slanted end towards the rear and straight end towards the front.

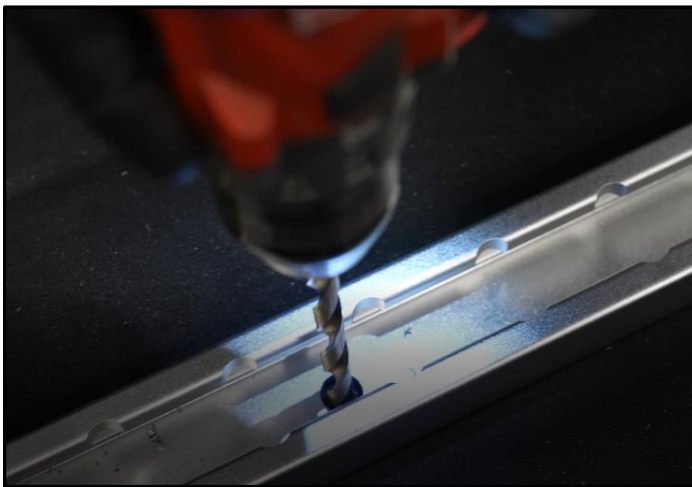
10. Secure the mounting hole by the straight end of the rail to the threaded hole in the bed.



11. Hold the rail centered in the groove and center punch the other (4) mounting holes of the truck bed for each side.

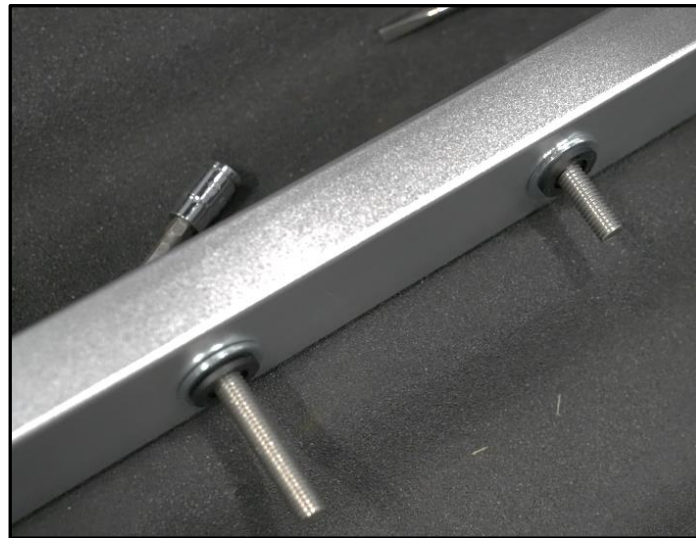
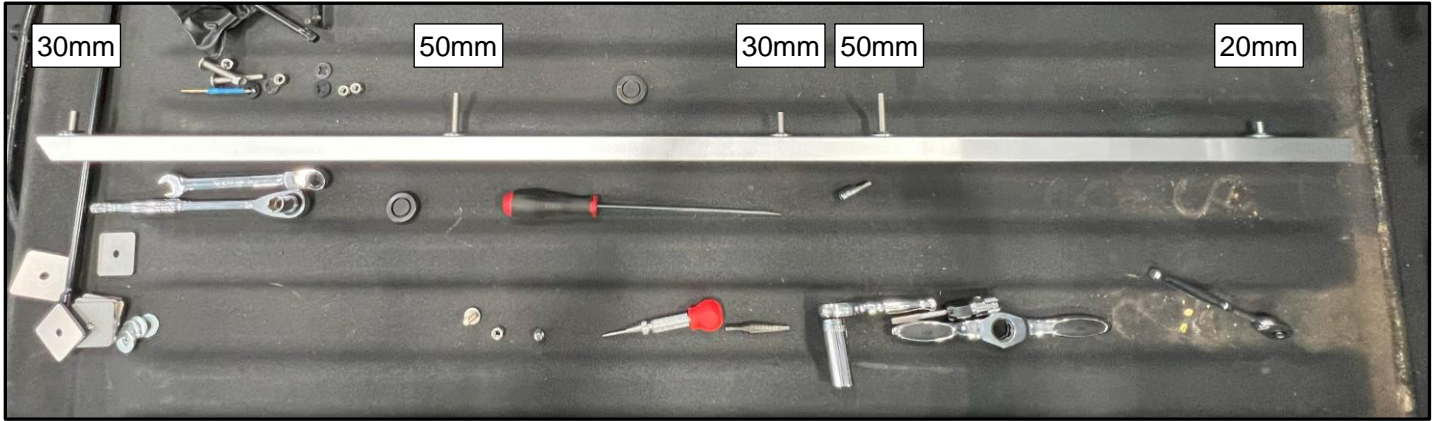


12. Using an 8mm or 5/16" drill bit, drill out the (4) holes on each side of the truck bed. When drilling the last hole on the driver side (closest to the rear) be careful not to drill into the trailer harness bracket or connector. The connector is shown in the image below with an arrow.



13. Remove the 20mm bolt installed in step # 7 and vacuum up the shavings.

14. To prevent rust, it is recommended to use a paint pen and neatly paint the inside of the bolt holes.
15. Locate the rest of the hardware.
16. The order of bolts starting from the front of the bed to the rear is: 20mm – 50mm – 30mm – 50mm – 30mm. Install each bolt into the rail. Then place a fender washer on each bolt, then a nylon retaining washer to hold them in place. Please refer to the images below.



17. Set the rails in the groove and thread the front 20mm bolt into the threaded hole at the front of the bed and align the other bolts into the through holes drilled in step # 12.



18. With a buddy holding the bolts in place in the truck bed, place a large square washer onto each bolt on the underside of the vehicle and secure with a nylon lock nut.



19. Snug up each nut making sure the rail stays centered in the groove in the bed. Then torque each nut to 21ft-lbs.
20. Check vehicle for loose tools/items.
21. Properly lower vehicle from jackstands.

Completed installation of the Nissan Frontier Bed Floor Utility-Track Kit by Z1 Off-Road should look as shown below:



END

Additional Technical Support:
Contact Z1 Off-Road at info@z1offroad.com
Or call 678-839-8019 between 9am and 6pm ET