

# Z1 FRONTIER SHOCK SKIDS INSTALLATION MANUAL



This Installation Manual is intended for the following models:

2005-2021	Nissan Frontier (D40)
2022+	Nissan Frontier (D41)

## PROLOGUE:

Study these instructions completely before proceeding to assembly. The installer must have a thorough knowledge of automotive systems operation. If unfamiliar with any of the concepts outlined in this instruction, we recommend the installation be completed by a qualified professional.

## WARNING!

Extreme caution should be taken when performing maintenance or performance upgrades to your vehicle. Please observe and abide by any Warning or Caution labels placed on the various components and tools used when servicing your vehicle. If you have any questions regarding installation or the various components included with the Z1 Off-Road Frontier Shock Skids, consult with a Professional Mechanic, or contact Z1 Off-Road for more information.

## **PARTS INCLUDED:**

Item	Quantity	Description
1	2	Z1 Frontier Shock Skid
2	4	Spacers
Item	Quantity	Optional Hardware
3	2	OEM Frontier Lower Shock Bolt
4	2	OEM Frontier Shock Lower Mounting Nut

## **TOOLS REQUIRED:**

- Hydraulic Jack
- (2) 2-Ton (or greater) Jack Stands
- Ratchet
- Ratchet Extension(s)
- Assorted Metric Sockets (up to 21mm)
- Assorted Metric Wrenches (up to 21mm)
- Torque Wrench

## **SAFETY REQUIREMENTS:**

- Always wear safety glasses and any necessary protective garments. If using any fluids, chemicals, or solvents, a respirator is recommended.
- Always use properly rated jack stands when working under your vehicle.
- Always keep limbs and parts away from moving drivetrain parts.
- Always turn the ignition to the OFF position and disconnect the NEGATIVE battery terminal.
- Only operate drivetrain in safe space and well-ventilated areas.

## **BEFORE YOU BEGIN:**

Remove contents from the Z1 Off-Road Frontier Shock Skids and verify that ALL necessary hardware is present.

## PROCEDURE:

1. Place the transmission in Park position (or in Reverse gear if equipped with a manual transmission). Apply the parking brake.
2. Locate proper jacking points on vehicle's chassis (refer to vehicle's Owner Manual). Raise and support vehicle using jack & jack stands.
3. Using a jack, slightly raise and support the rear axle.
4. Starting on the driver's (left) side, locate the lower shock mount bolt and nut, and remove. The rear axle may need to be raised slightly using the jack to allow the bolt to come out freely. *Figure 1.*

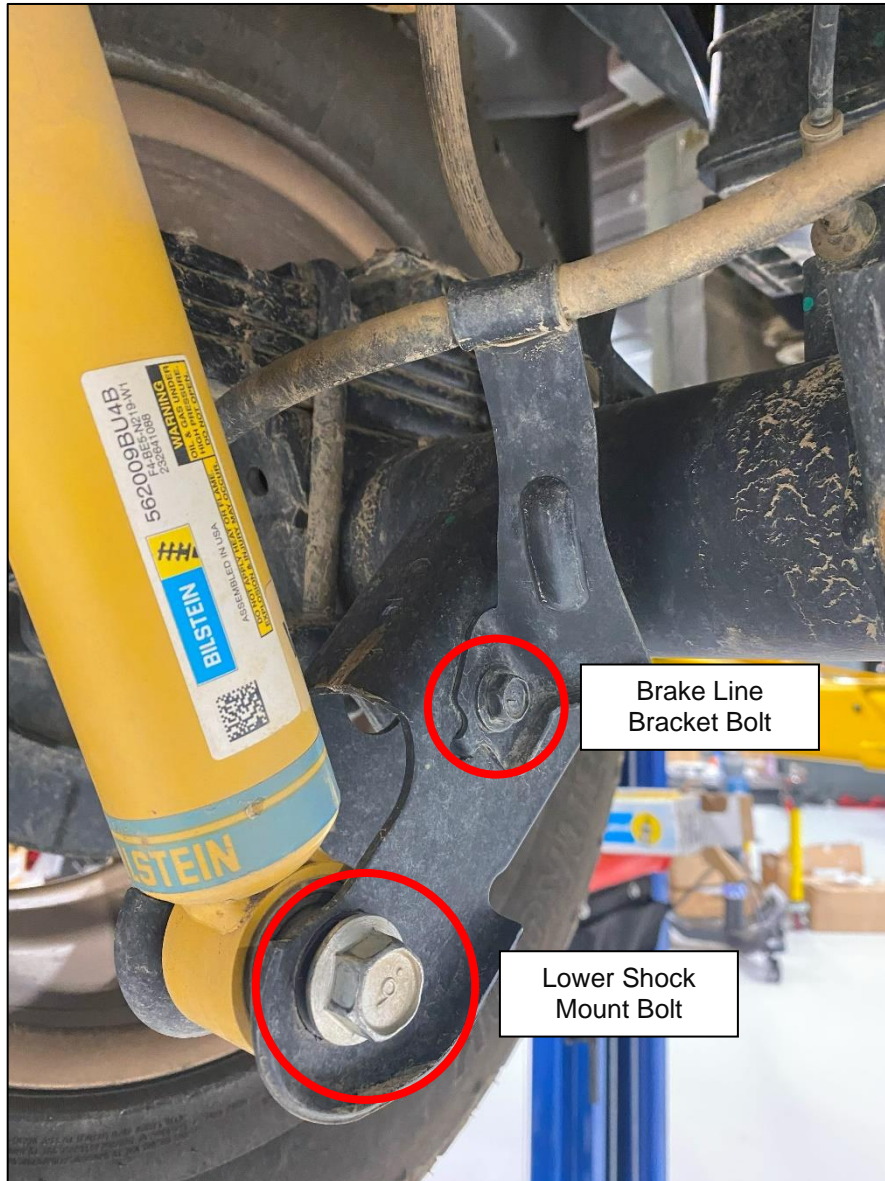


Figure 1

**NOTE:** We installed new shocks at this time, so the remaining steps will show a different shock in the reference images.

5. The rear left shock mount has a brake line bracket attached, remove the one bolt holding it on. The right side does not have this bracket. *Figure 1* above.
6. Place the Shock Skid over the shock mounting point as shown below. *Figure 2*.



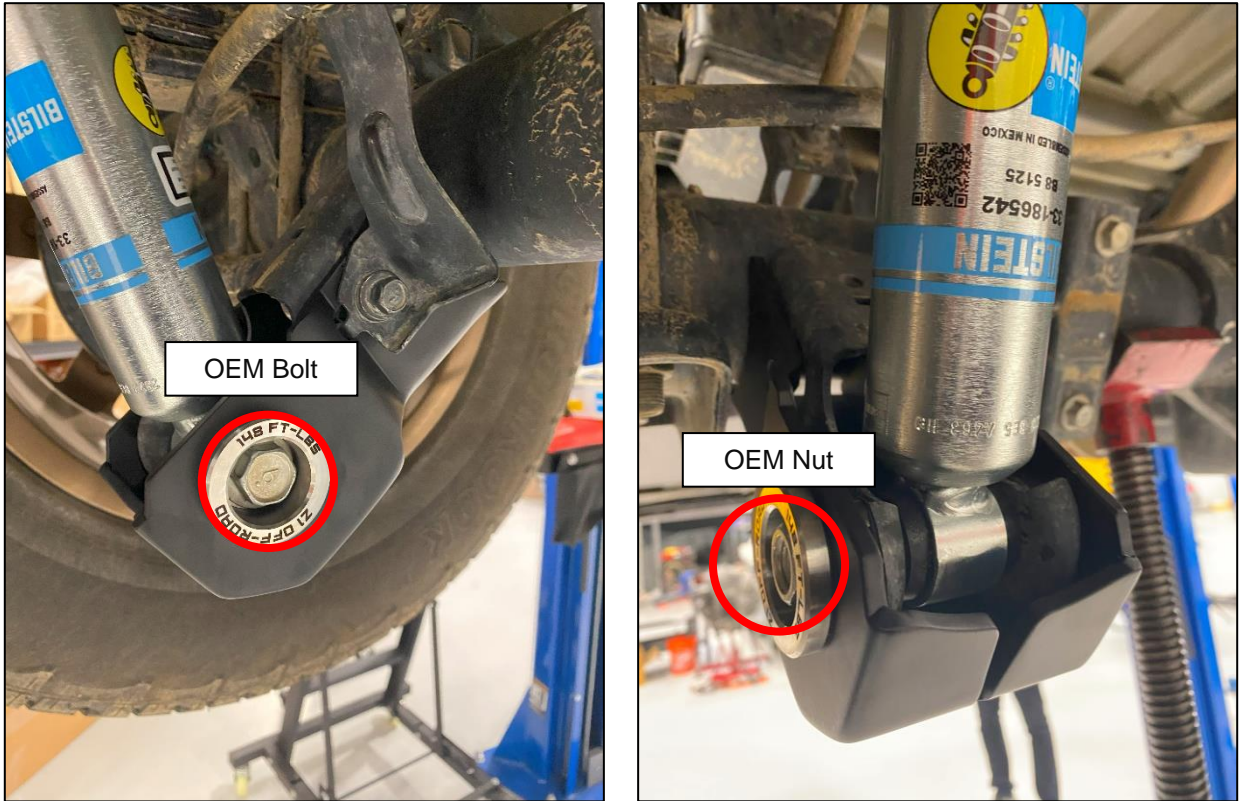
*Figure 2*

7. Using (2) two supplied Spacers, install one onto each side of the Shock Skid, with the text facing away from the Shock Skid. *Figure 3*.



*Figure 3*

8. Install either the optional Nut and Bolt, or the OEM Nut and Bolt removed during *Step 4* through the Spacers and Shock Skids. Torque to 148 ft-lbs. *Figure 4.*



*Figure 4*

9. Reinstall the brake line bracket onto the left Shock Skid, use the OEM hardware removed in *Step 5*. This only applies to the driver's side of the car. *Figure 5.*



*Figure 5*

10. Repeat Steps 4-8 for the Passenger (right) side of the vehicle. *Figure 6.*



*Figure 6*

11. Remove jack and lower axle.
12. Account for and remove any tools.
13. Safely lower vehicle off of jack stands.

**END**

**Additional Technical Support:**  
Contact Z1 Off-Road at [info@z1offroad.com](mailto:info@z1offroad.com)  
Or call 678-839-8019 between 9am and 6pm ET