

Z1 FRONTIER XTERRA ENGINE SKID PLATE INSTALLATION MANUAL



| This Installation Manual is intended for the following models: | |
|--|-----------------|
| 2005-2021 | Nissan Frontier |
| 2022+ | Nissan Frontier |
| 2005-2015 | Nissan Xterra |

PROLOGUE:

Study these instructions completely before proceeding to assembly. The installer must have a thorough knowledge of automotive systems operation. If unfamiliar with any of the concepts outlined in this instruction, we recommend the installation be completed by a qualified professional.

WARNING!

Extreme caution should be taken when performing maintenance or performance upgrades to your vehicle. Please observe and abide by any Warning or Caution labels placed on the various components and tools used when servicing your vehicle. If you have any questions regarding installation or the various components included with the Z1 Off-Road Frontier Xterra Engine Skid Plate, consult with a Professional Mechanic or contact Z1 Off-Road for more information.

PARTS INCLUDED:

| Item | Quantity | Description |
|------|----------|--------------------------------------|
| 1 | 1 | Z1 Engine Skid Plate Main Panel |
| 2 | 5 | Service Panel |
| 3 | 4 | M6 x 16mm Bolt (service panel bolts) |
| 4 | 5 | M8 x 30mm Bolt |
| 5 | 1 | M8 Flange Locknut |
| 6 | 4 | M6 Washer |
| 7 | 5 | M8 Washer |

TOOLS REQUIRED:

- Hydraulic Jack
- (2) 2-Ton (or greater) Jack Stands
- Ratchet
- Ratchet Extension(s)
- Assorted Metric Sockets (up to 21mm)
- Assorted Metric Wrenches (up to 21mm)
- Torque Wrench
- Hammer

SAFETY REQUIREMENTS:

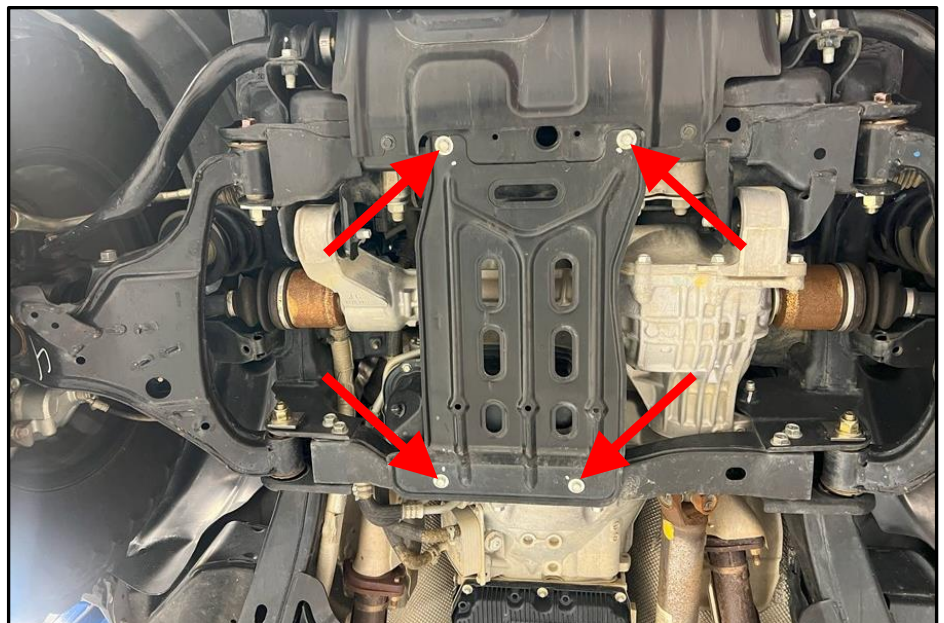
- Always wear safety glasses and any necessary protective garments. If using any fluids, chemicals, or solvents, a respirator is recommended.
- Always use properly rated jack stands when working under your vehicle.
- Always keep limbs and parts away from moving drivetrain parts.
- Always turn the ignition to the OFF position and disconnect the NEGATIVE battery terminal.
- Only operate drivetrain in safe space and well-ventilated areas.

BEFORE YOU BEGIN:

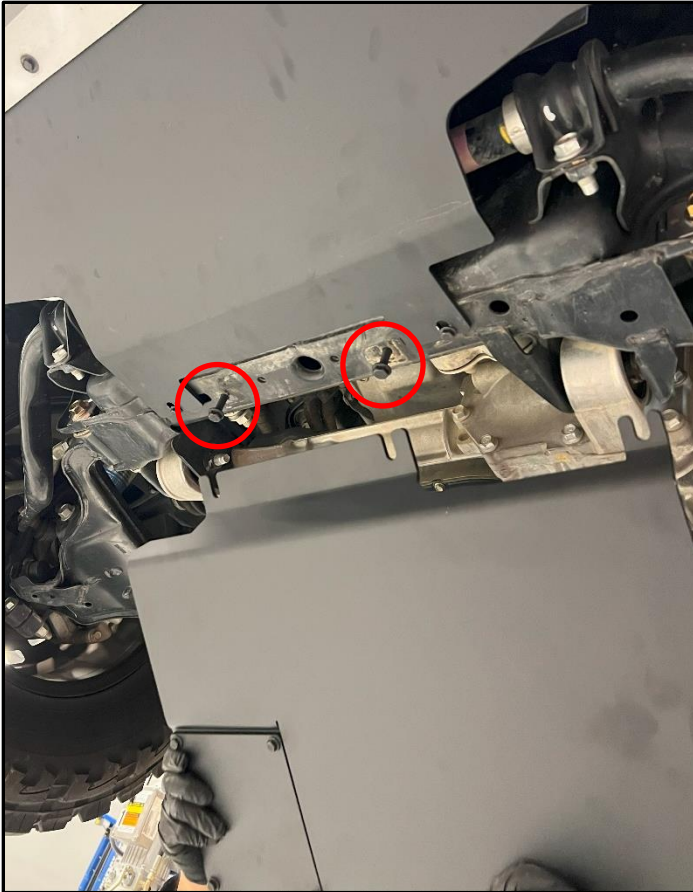
Remove contents from the Z1 Off-Road Frontier Xterra Engine Skid Plate box. The skid plate will come with extra hardware that is not needed. The correct hardware will be stainless steel and zinc coated steel and bagged together in a 4" poly bag. There will be extra hardware (mostly black phosphated) that can be discarded.

PROCEDURE:

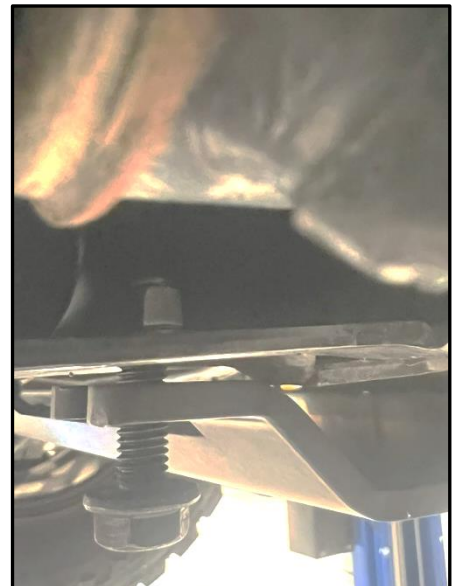
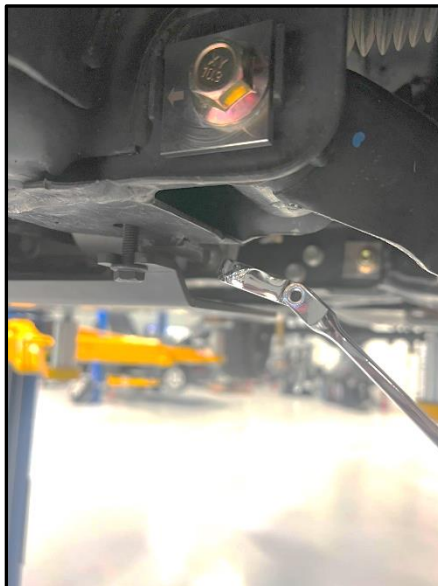
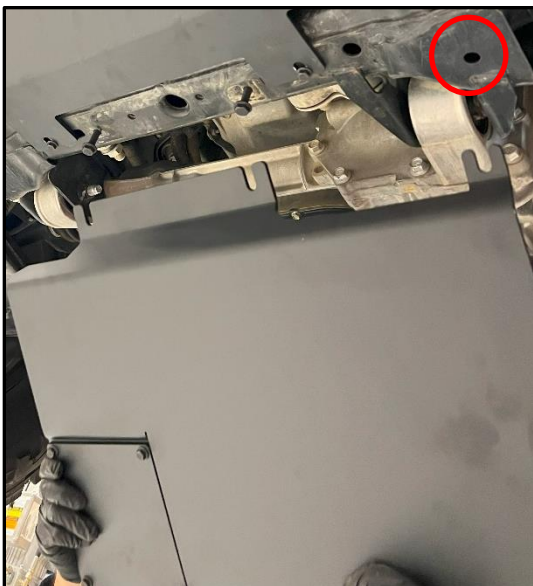
1. Place the transmission in Park position (or in Reverse gear if equipped with a manual transmission). Apply the parking brake.
2. Locate proper jacking points on vehicle's chassis (refer to vehicle's Owner Manual). Raise and support vehicle using jack & jack stands.
3. Remove the OE engine oil pan cover. It is attached to the vehicle at the corners with (4) bolts (shown at right).



4. Locate the Z1 Skid Plate, all (5) brackets, (8) M10 washers, and all (8) M10 x 25mm bolts.
5. Loosely install (2) M8 bolts with a washer in the (2) forward bolt holes that the OE cover was attached to (circled below). Using the slots on the Z1 skid, slide it in place under the engine, swing the panel up, and loosely secure the rear of the skid place with (2) M8 x 30mm bolts and washers (shown below).



6. On some models there is an existing hole on the driver's side of the front subframe that will be used as a 5th mounting point, circled below. Using the provided M8 nut and (1) M8 x 30mm bolt and washer, secure the corner of the skid plate to the subframe.



If this hole is not present and you want to utilize the 5th mounting location, tighten up the other (4) mounting bolts. Then mark the location on the subframe off the 5th mounting hole, remove the Z1 skid plate, drill out the marked hole to 8mm and install the nut and screw.

7. Once all bolts are loosely installed, go back and tighten all hardware in steps. If you purchased the Z1 Off-Road Transfer Case Skid Plate, leave the rear (2) bolts loose as that skid will use the same bolts.
8. Check vehicle for loose tools/items.
9. Properly lower vehicle from jack and jackstands.
10. Take vehicle for a test drive.

END

Additional Technical Support:

Contact Z1 Off-Road at info@z1offroad.com
Or call 678-839-8019 between 9am and 6pm ET