

Z1 FRONTIER XTERRA RADIATOR SKID PLATE INSTALLATION MANUAL



This Installation Manual is intended for the following models:	
2005-2021	Nissan Frontier
2022+	Nissan Frontier
2005-2015	Nissan Xterra

PROLOGUE:

Study these instructions completely before proceeding to assembly. The installer must have a thorough knowledge of automotive systems operation. If unfamiliar with any of the concepts outlined in this instruction, we recommend the installation be completed by a qualified professional.

WARNING!

Extreme caution should be taken when performing maintenance or performance upgrades to your vehicle. Please observe and abide by any Warning or Caution labels placed on the various components and tools used when servicing your vehicle. If you have any questions regarding installation or the various components included with the Z1 Off-Road Frontier Xterra Radiator Skid Plate, consult with a Professional Mechanic or contact Z1 Off-Road for more information.

PARTS INCLUDED:

Item	Quantity	Description
1	1	Z1 Radiator Skid Main Panel
2	1	Passenger Side Bracket
3	1	Driver Side Bracket
4	8	M6 x 15mm Bolt
5	8	M6 Washer
6	2	M6 Stainless Steel Nyloc Nut
7	2	M6 Stainless Steel Oversized Washer
8	4	M12 x 45mm Bolt
9	4	M12 Washer
10	4	M8 x 25mm Flange Button Head Bolt
11	4	M8 Washer

TOOLS REQUIRED:

- Hydraulic Jack
- (2) 2-Ton (or greater) Jack Stands
- Ratchet
- Ratchet Extension(s)
- Assorted Metric Sockets (up to 21mm)
- Assorted Metric Wrenches (up to 21mm)
- Torque Wrench
- Hammer

SAFETY REQUIREMENTS:

- Always wear safety glasses and any necessary protective garments. If using any fluids, chemicals, or solvents, a respirator is recommended.
- Always use properly rated jack stands when working under your vehicle.
- Always keep limbs and parts away from moving drivetrain parts.
- Always turn the ignition to the OFF position and disconnect the **NEGATIVE** battery terminal.
- Only operate drivetrain in safe space and well-ventilated areas.

BEFORE YOU BEGIN:

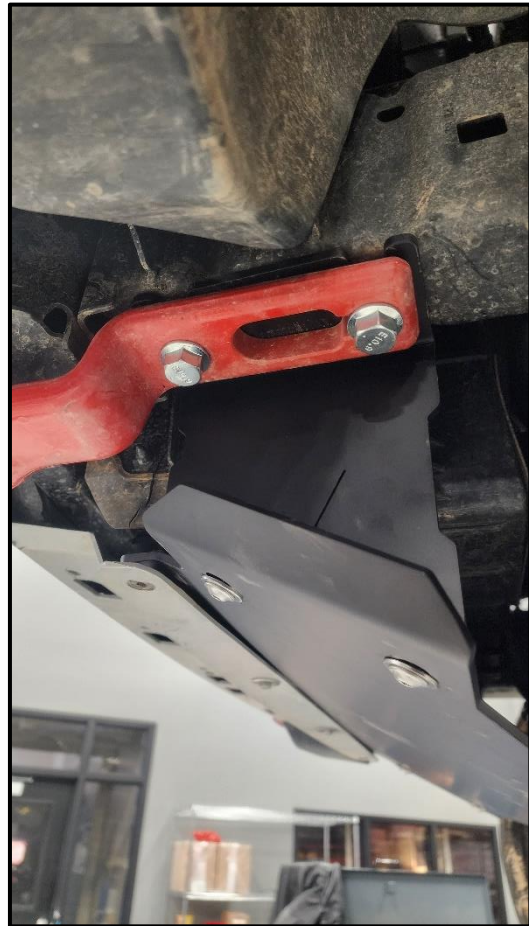
Remove contents from the Z1 Off-Road Frontier Xterra Radiator Skid Plate box. The skid plate will come with extra hardware that is not needed. The correct hardware will be stainless steel and zinc coated steel and bagged together in a 4" poly bag. There will be extra hardware (mostly black phosphate) that can be discarded.

PROCEDURE:

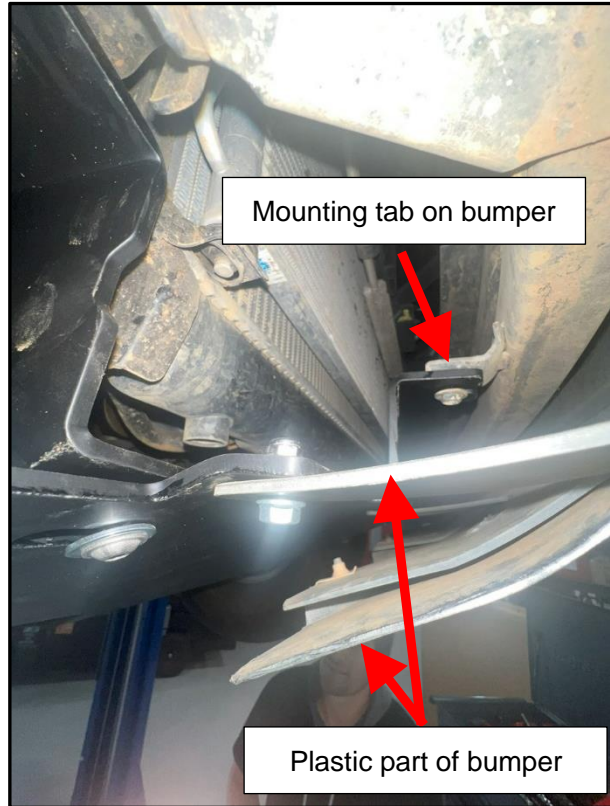
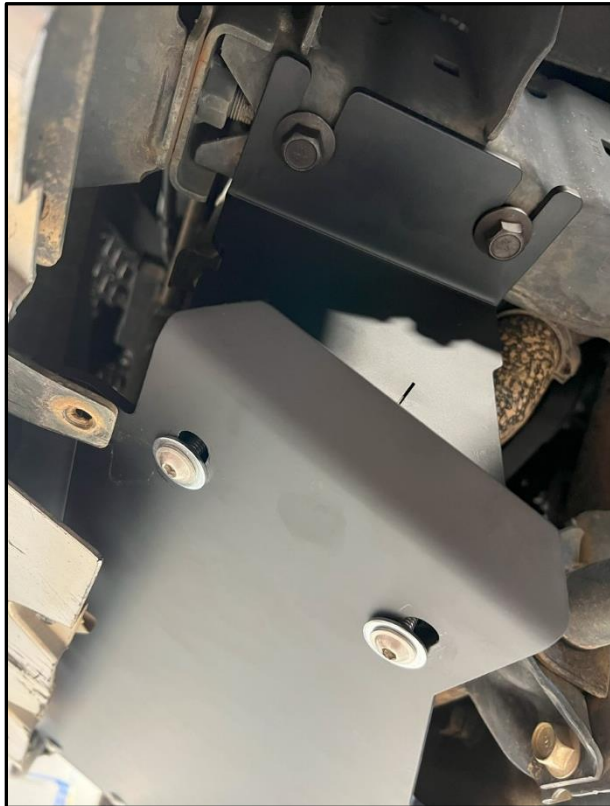
The pictures used in this guide are shown with sample hardware that may be visually different than what is sent.

1. Place the transmission in Park position (or in Reverse gear if equipped with a manual transmission). Apply the parking brake.
2. Locate proper jacking points on vehicle's chassis (refer to vehicle's Owner Manual). Raise and support vehicle using jack & jack stands.
3. If present, remove OE radiator/front undercover (OE skid).

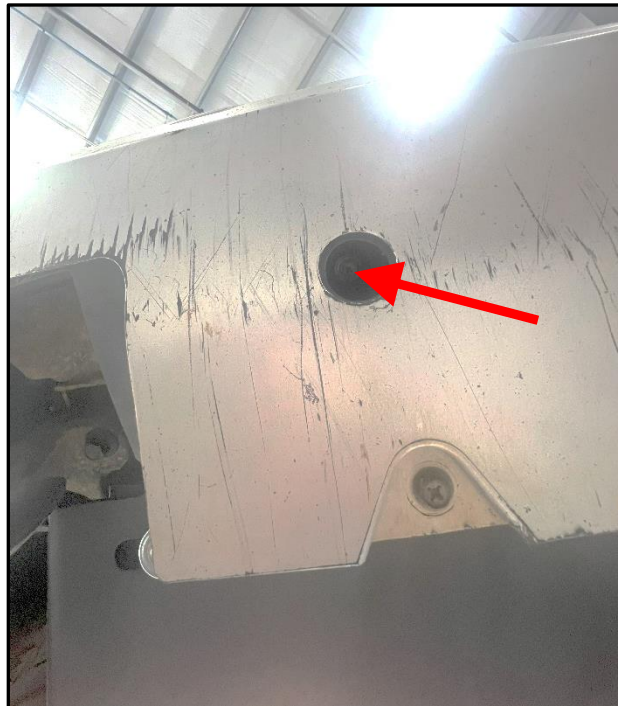
4. Locate both driver and passenger side brackets, (4) M12 x 45mm bolts, and (4) M12 washers.
5. The side brackets will attach to the bottom side of the frame rails on each side. On the Xterra and D41 Frontier there will be OE tow hooks mounted in this location (only on passenger side for Xterra). Remove the OE bolts, slide the Z1 brackets in place with tow hooks and loosely secure with the provided M12 x 45mm bolts and M12 washers.



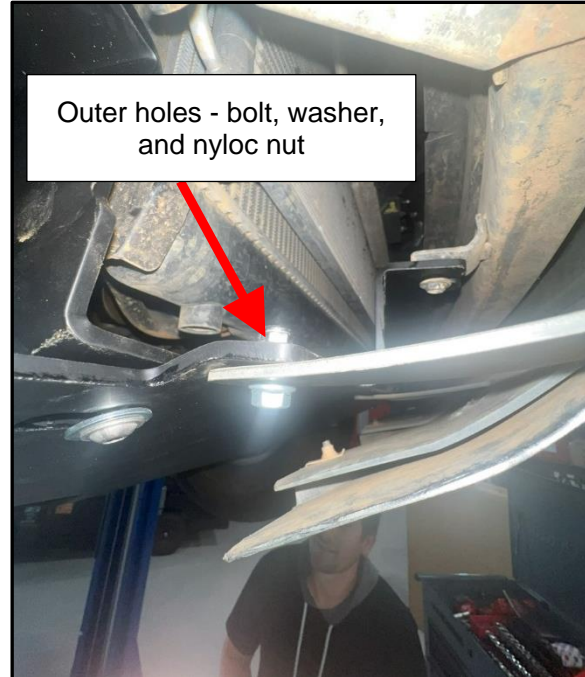
6. Locate the large main panel and the rest of the hardware. Loosely secure the main panel to the brackets installed in the previous step with (4) M8 x 25mm flange button head bolts and washers making sure the front edge meets up with the mounting tabs on the bumper.



7. Loosely secure the front mounting tabs on the skid plate to the mounting tabs on the front bumper with (2) M6 x 16mm bolts and washers. On Xterra (shown below) there will be access holes in the front bumper allowing you to install these bolts. On Frontiers you will need pry the bottom of the bumper away and use a wrench to access these.



- Loosely secure the middle holes on the bottom of the front bumper to the skid plate with (2) M6 x 16mm bolts and washers.
- Loosely secure the outside holes on the bottom of the front bumper to the skid plate with (2) M6 x 16mm bolts and washers using (2) M6 nyloc nuts on top.



- Loosely secure the rear of the skid plate to the front subframe with (2) M6 x 16mm bolts and washers.



- Once all bolts are loosely installed, go back and tighten all hardware in steps until everything is tight. For Xterra owners, you may need to remove the front tow hook and reinstall it after everything else is tight.
- Check vehicle for loose tools/items.
- Properly lower vehicle from jack and jackstands.
- Take vehicle for a test drive.

END

Additional Technical Support:
Contact Z1 Off-Road at info@z1offroad.com
Or call 678-839-8019 between 9am and 6pm ET