

# Z1 FRONTIER/XTERRA STEEL RADIATOR SKID PLATE INSTALLATION MANUAL



This Installation Manual is intended for the following models:	
2005-2021	Nissan Frontier (D40)
2022+	Nissan Frontier (D41)
2005-2015	Nissan Xterra

## PROLOGUE:

Study these instructions completely before proceeding to assembly. The installer must have a thorough knowledge of automotive systems operation. If unfamiliar with any of the concepts outlined in this instruction, we recommend the installation be completed by a qualified professional.

## WARNING!

Extreme caution should be taken when performing maintenance or performance upgrades to your vehicle. Please observe and abide by any Warning or Caution labels placed on the various components and tools used when servicing your vehicle. If you have any questions regarding installation or the various components included with the Z1 Off-Road Frontier/Xterra Radiator Skid Plate, consult with a Professional Mechanic, or contact Z1 Off-Road for more information.

## **PARTS INCLUDED:**

Item	Quantity	Description
1	1	Main Panel
2	1	Right Bracket
3	1	Left Bracket
4	2	M6 Washer
5	2	M6 x 1.0 Flanged Hex Head Bolt, 25mm
6	4	M8 x 1.25 Flanged Button Head Screw, 25mm
7	4	M8 Washer
8	4	M12 x 1.25 Flanged Hex Head Bolt, 55mm
9	1	Bumper Retainer
10	8	M6 x 1.0 Flanged Hex Head Bolt, 16mm

## **TOOLS REQUIRED:**

- Hydraulic Jack
- (2) 2-Ton (or greater) Jack Stands
- Ratchet
- Ratchet Extension(s)
- Assorted Metric Sockets
- Assorted Metric Wrenches

## **SAFETY REQUIREMENTS:**

- Always wear safety glasses and any necessary protective garments. If using any fluids, chemicals, or solvents, a respirator is recommended.
- Always use properly rated jack stands when working under your vehicle.
- Always keep limbs and parts away from moving drivetrain parts.
- Always turn the ignition to the OFF position and disconnect the NEGATIVE battery terminal.
- Only operate drivetrain in safe space and well-ventilated areas.

## **BEFORE YOU BEGIN:**

Remove contents from the Z1 Off-Road Frontier/Xterra Radiator Skid Plate and verify that ALL necessary hardware is present.

## **PROCEDURE:**

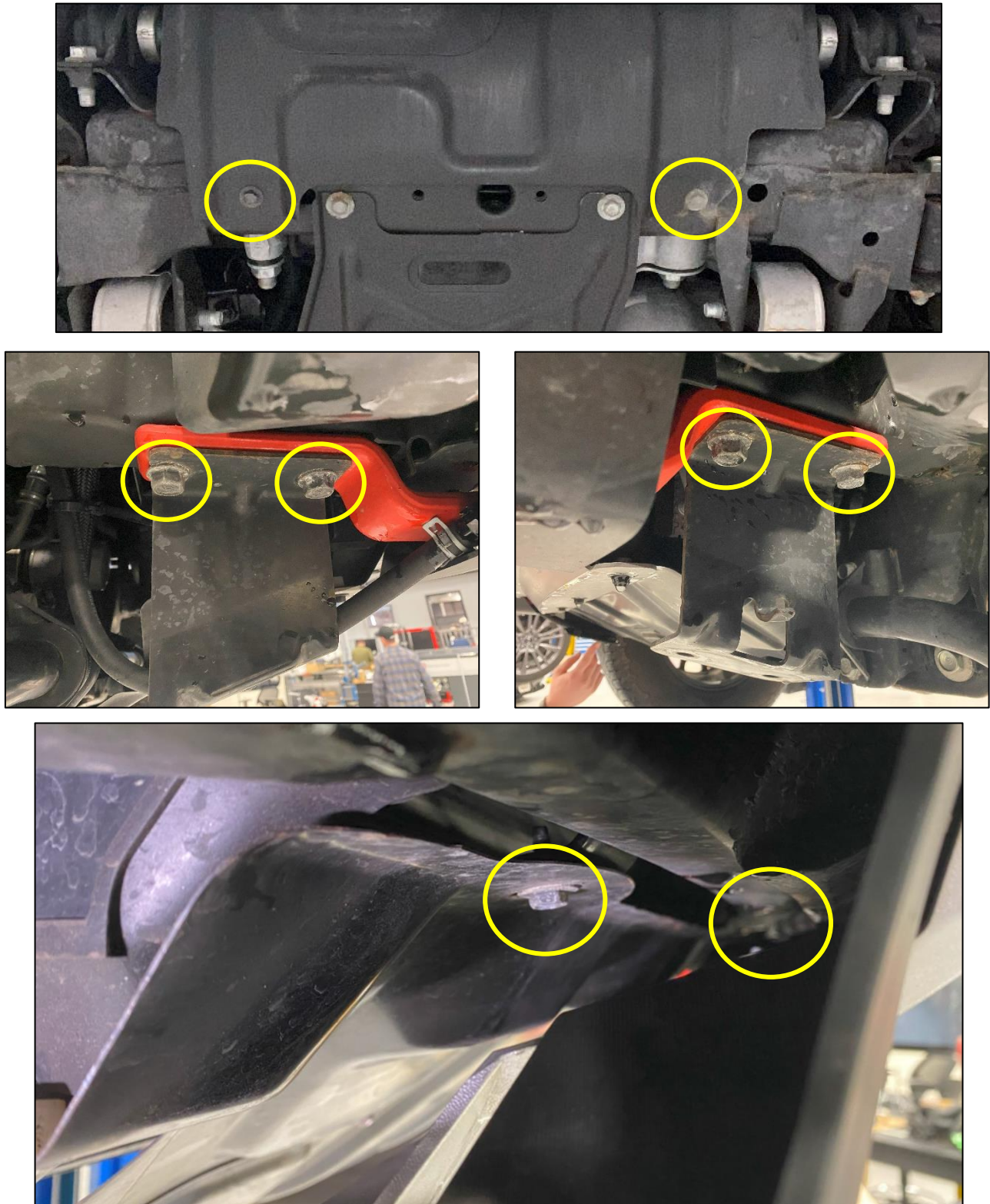
1. Place the transmission in Park position (or in Reverse gear if equipped with a manual transmission). Apply the parking brake.
2. Raise and support the vehicle with a jack and jack stands if desired. This installation can be done on the ground without raising the vehicle.
3. Remove the OE Skid Plate if your vehicle is equipped with one. It is held on by (4) four bolts. *Figure 1.*



*Figure 1*

4. Remove the Plate under the Skid Plate. It is held on by (2) two bolts on the left and right sides, (2) two bolts on the bottom of the frame, and (2) two bolts behind the front bumper. *Figure 2.*

**NOTE.** When removing these bolts, be careful to not drop the Tow Hooks if your vehicle is equipped with them as they will fall when the bolts on the side are removed.



*Figure 2*



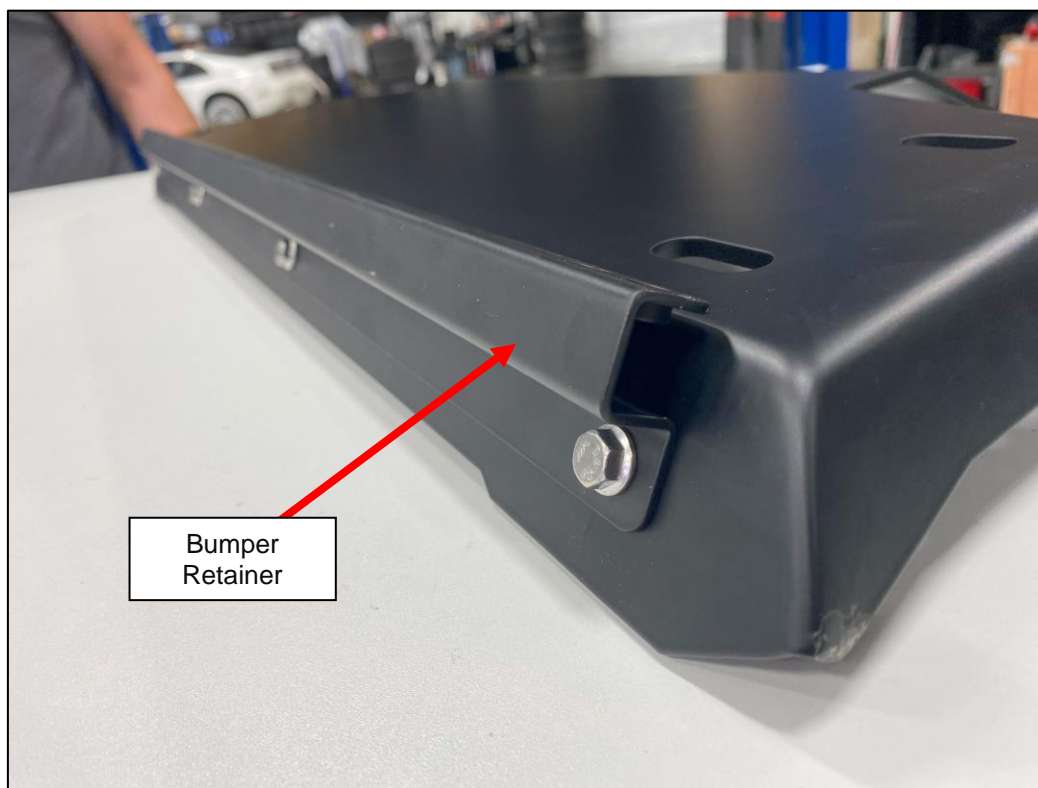
5. Locate the Right Side (Passenger Side) Bracket and (2) two M12 x 1.25 Flanged Hex Head Bolts. Loosely secure the Bracket to the Tow Hook mounting location, do not fully tighten any of the bolts yet. If you are using Tow Hooks, place them underneath the Bracket. *Figure 3.*



*Figure 3*

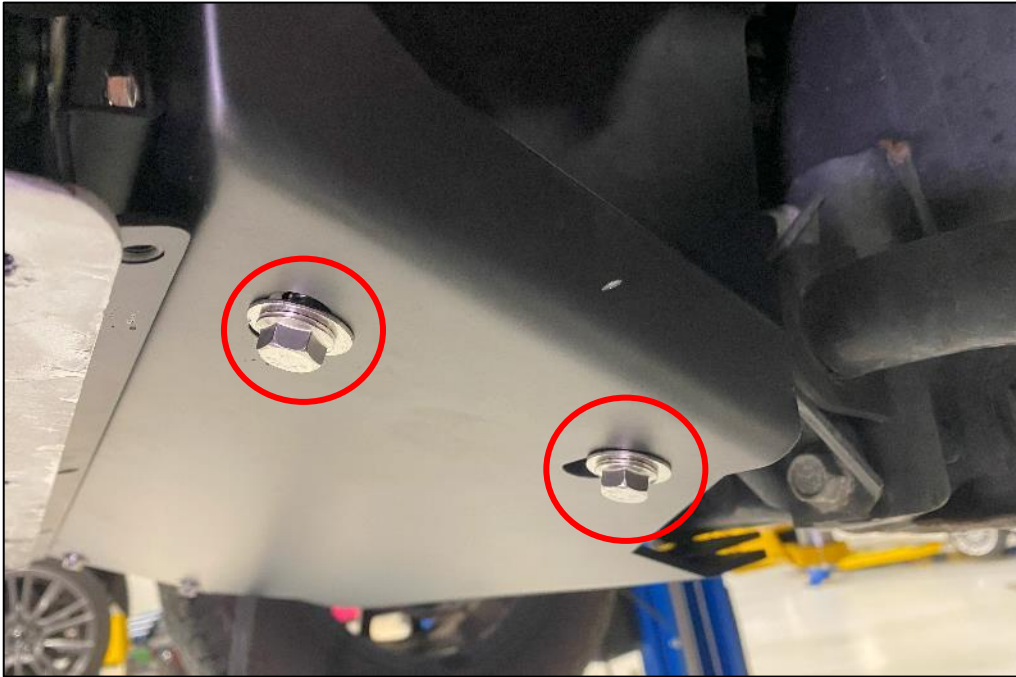
6. Repeat Step 6 for the Left Side (Driver Side) Bracket.

7. Locate the Main Panel, Bumper Retainer and (4) four M6 x 1.0 Flanged Hex Head Bolts, 16mm. Attach the Bumper retainer to the Main Panel with the M6 Bolts as shown. *Figure 4.*



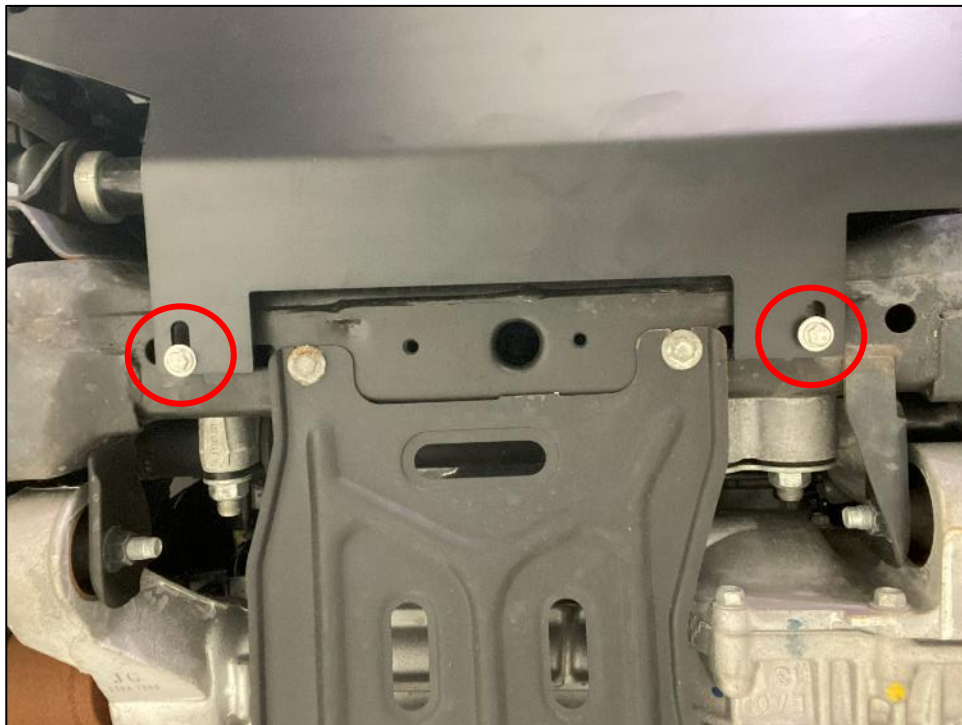
*Figure 4*

8. Locate (4) four M8 Washers and (4) four M8 x 1.25 Button Head Screws, 25mm. Place a Washer on each screw. Position the Main Panel to the Car. Loosely secure the Main Panel to the Left and Right Brackets with the M8 Screws. Make sure the Bumper Retainer is behind the Front Bumper as shown. *Figure 5.*



*Figure 5*

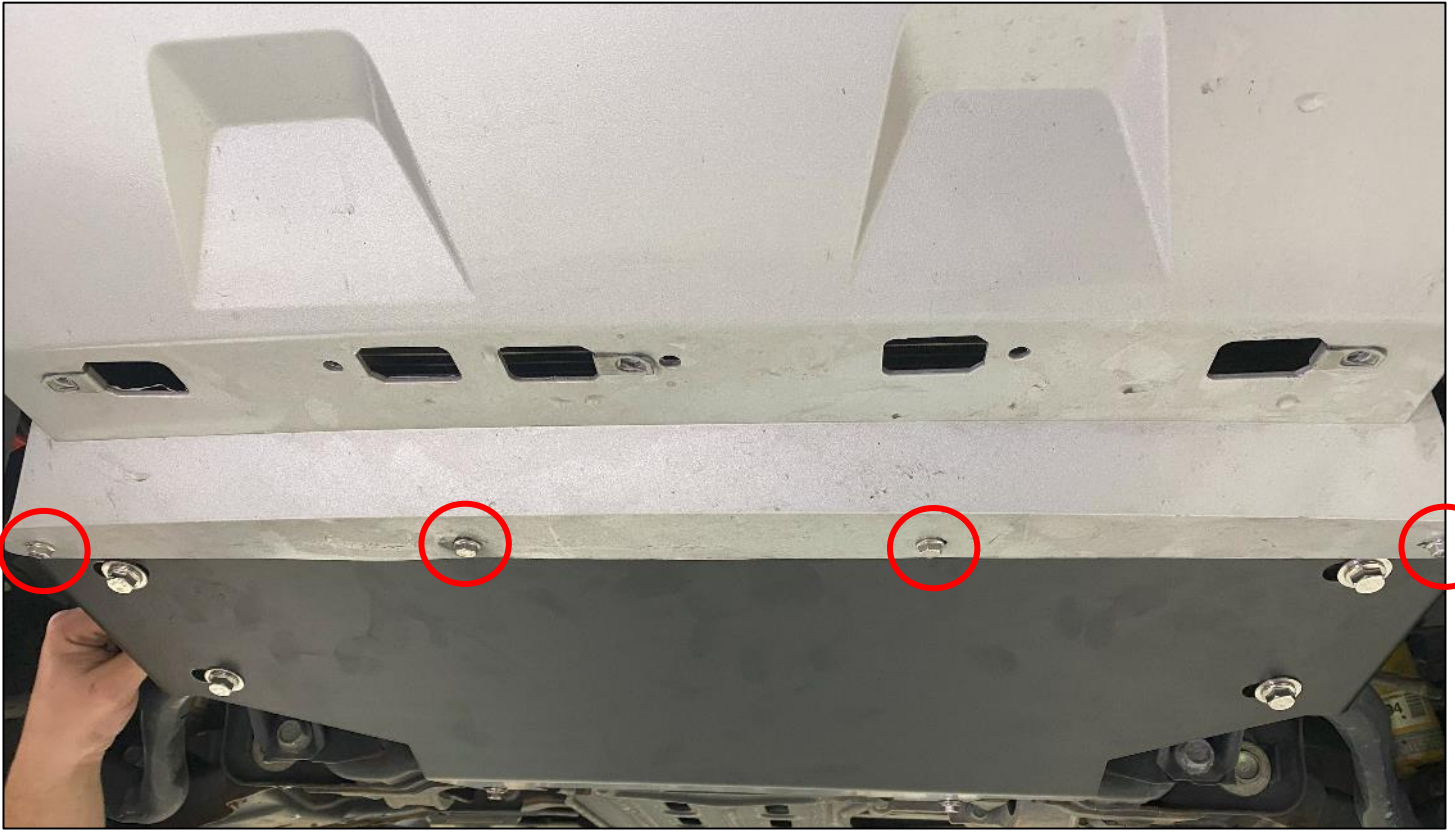
9. Locate (2) two M6 x 1.0 Flanged Hex Head Bolts, 25mm and (2) two M6 Washers. Loosely secure the back of the Main Panel to the Frame of the vehicle with an M6 Bolts and Washers. *Figure 6.*



*Figure 6*



10. Locate (4) four M6 x 1.0 Flanged Hex Head Bolts. Secure the Front Bumper to the Bumper Retainer and tighten the bolts. *Figure 7.*



*Figure 7*

11. Tighten the rest of the installed hardware to secure the Skid Plate.

**END**

**Additional Technical Support:**  
Contact Z1 Off-Road at [info@z1offroad.com](mailto:info@z1offroad.com)  
Or call 678-839-8019 between 9am and 6pm ET