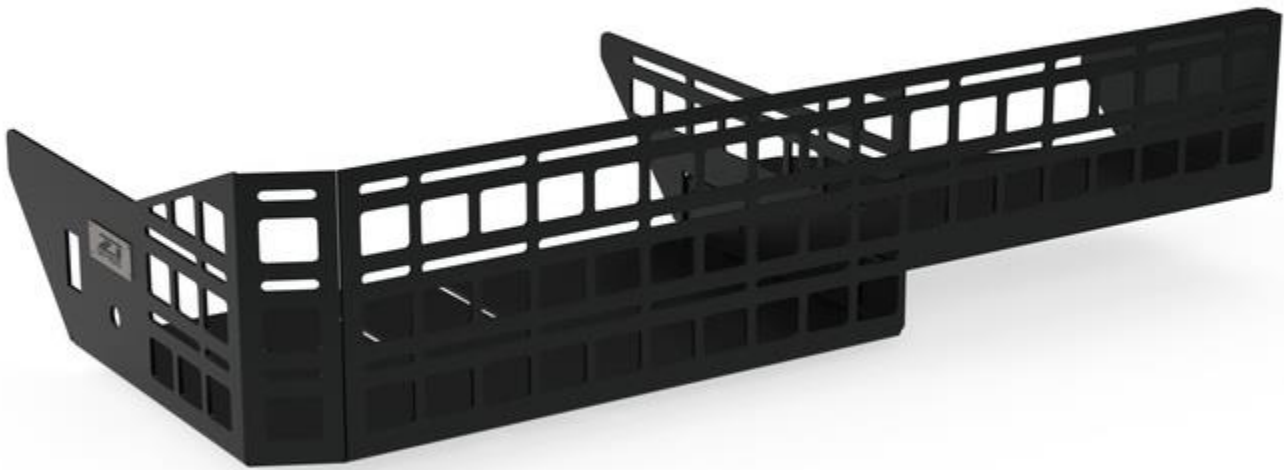


# Z1 REAR SEAT MOLLE STORAGE INSTALLATION MANUAL



This Installation Manual is intended for the following models:

2022+	Nissan Frontier (Crew Cab)
2005-2022	Nissan Frontier (Crew Cab)

## PROLOGUE:

Study these instructions completely before proceeding to assembly. The installer must have a thorough knowledge of automotive systems operation. If unfamiliar with any of the concepts outlined in this instruction, we recommend the installation be completed by a qualified professional.

## WARNING!

Extreme caution should be taken when performing maintenance or performance upgrades to your vehicle. Please observe and abide by any Warning or Caution labels placed on the various components and tools used when servicing your vehicle. If you have any questions regarding installation or the various components included with the Z1 Off-Road Rear Seat MOLLE Storage, consult with a Professional Mechanic, or contact Z1 Off-Road for more information.

## **PARTS INCLUDED:**

Item	Quantity	Description
1	1	Main Basket
2	1	Divider
3	2	M6 x 16mm Flanged Hex Head Screw
4	4	M6 x 12mm Flanged Hex Head Screw
Optional Upgrades		
5	1	ARB Air Pump Kit

## **TOOLS REQUIRED:**

- Ratchet
- Ratchet Extension(s)
- Assorted Metric Sockets
- Assorted Metric Wrenches

## **SAFETY REQUIREMENTS:**

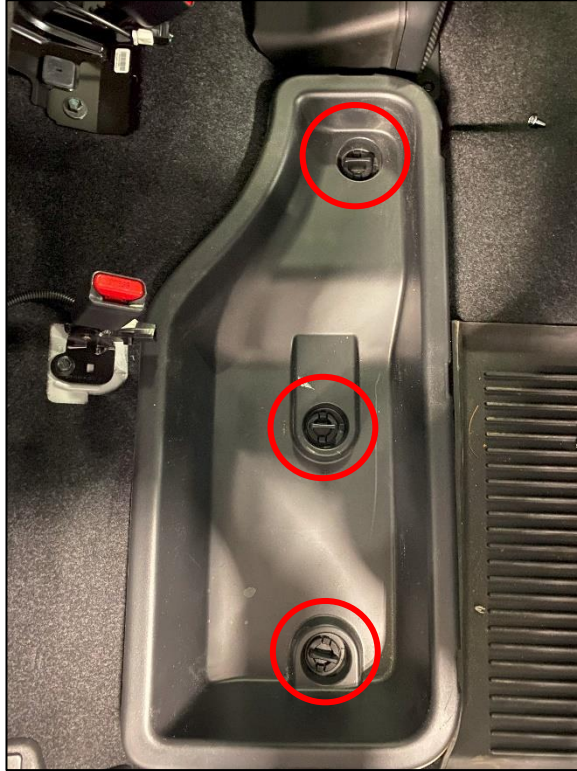
- Always wear safety glasses and any necessary protective garments. If using any fluids, chemicals, or solvents, a respirator is recommended.
- Always use properly rated jack stands when working under your vehicle.
- Always keep limbs and parts away from moving drivetrain parts.
- Always turn the ignition to the OFF position and disconnect the NEGATIVE battery terminal.
- Only operate drivetrain in safe space and well-ventilated areas.

## **BEFORE YOU BEGIN:**

Remove contents from the Z1 Off-Road Rear Seat MOLLE Storage and verify that ALL necessary hardware is present.

## **MOLLE PANEL STORAGE INSTALLATION:**

1. Place the transmission in Park position (or in Reverse gear if equipped with a manual transmission). Apply the parking brake.
2. In the backseat of the vehicle on the Passenger Side, raise the Rear Seat.
3. Twist the (3) three OE Locks in the Tray to the "Unlock" position. *Figure 1.*



*Figure 1*

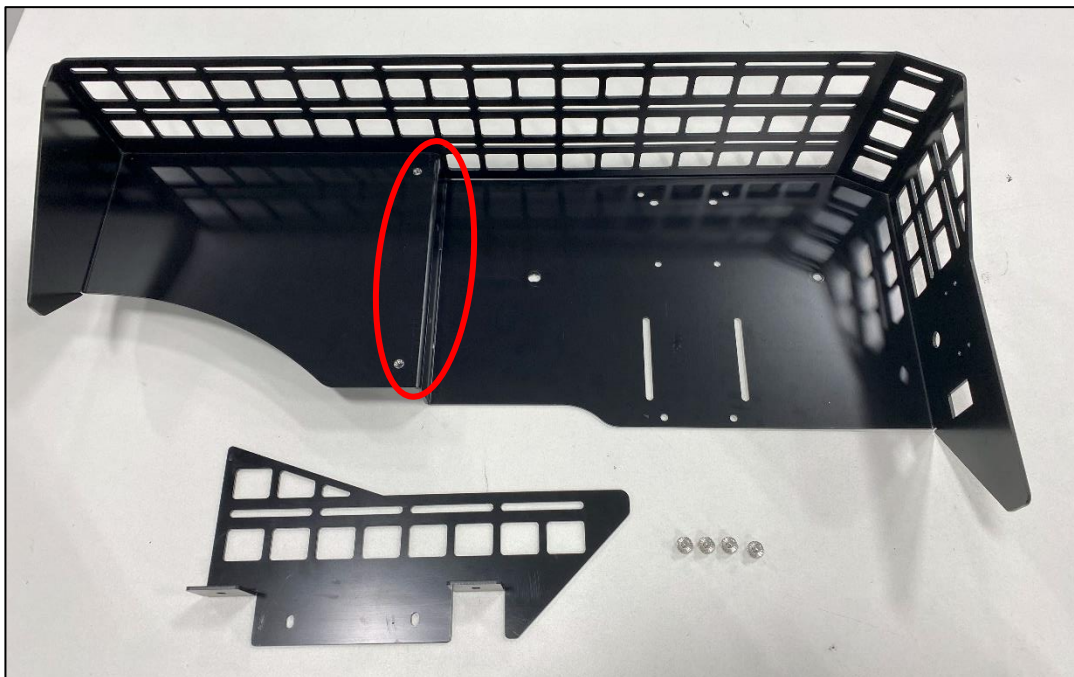
4. Remove the OE Tray from the vehicle. *Figure 2.*



*Figure 2*

5. Locate the Main Basket, Divider and (4) four M6 x 12mm Flanged Hex Head Screws. Secure the Divider to the Main Basket with the M6 Screws, circled below.

**NOTE:** These are preproduction pieces and may look slightly different than your MOLLE Pieces.



*Figure 3*

6. Position the Basket Assembly as shown below and line up the (2) two OE Threaded holes on the floor of the vehicle with the openings of the Main Basket. *Figure 4.*

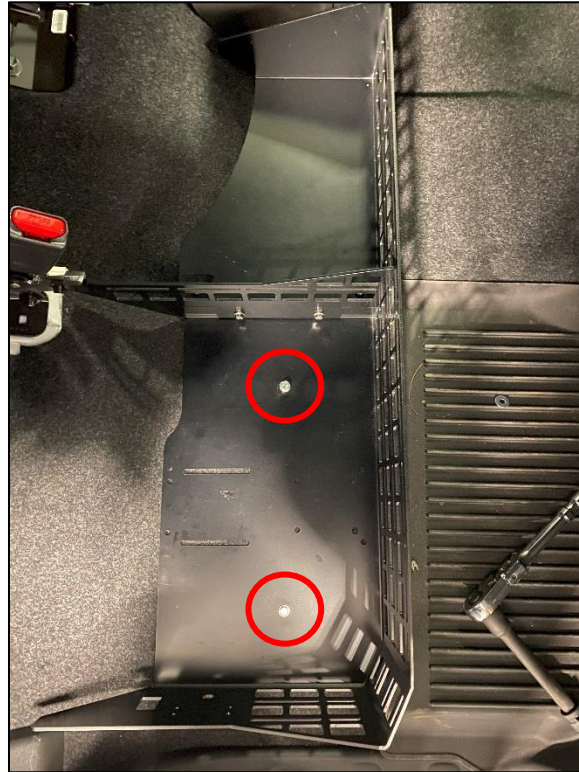
**NOTE:** If you are installing an Air Pump, skip to the [Air Pump Installation Section](#) before installing the MOLLE Panel in the vehicle.



*Figure 4*

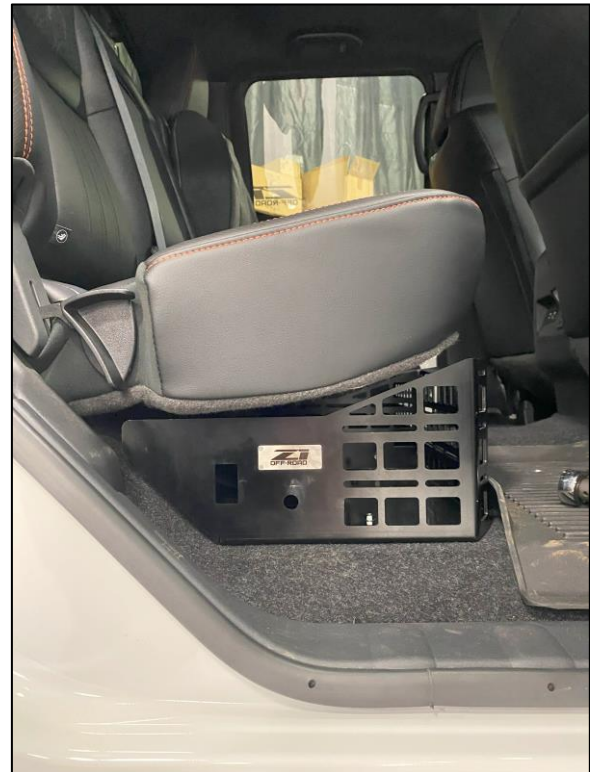
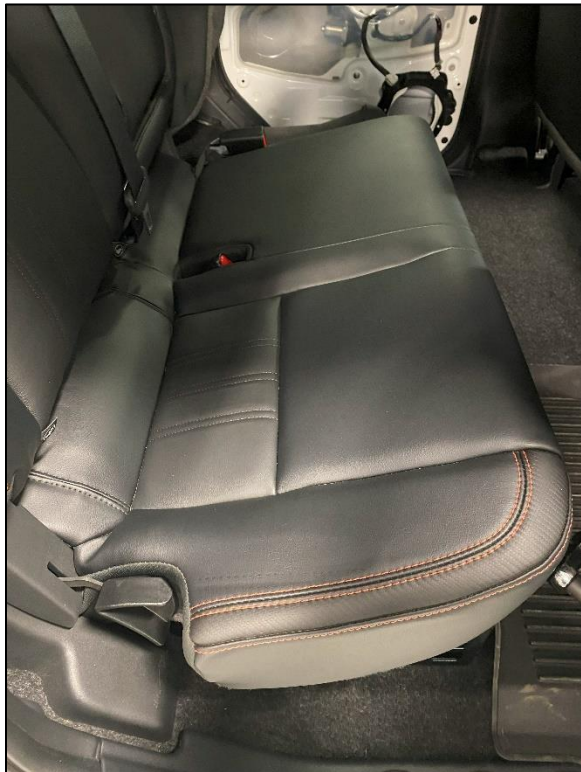


7. Locate the (2) two M6 x 16 Flanged Hex Head Screws. Install the screws into the OE Threaded Holes and tighten them to secure the MOLLE Storage Basket to the vehicle. Torque to **7 ft-lbs** or **84 in-lbs**. *Figure 5.*



*Figure 5*

8. Lower the rear seat. *Figure 6.*



*Figure 6*

## AIR PUMP INSTALLATION

1. Locate your Air Pump and included fittings and hardware. We are using the Optional ARB Air Pump which includes all necessary hardware. If you choose to use a different Air Pump, it may not include hardware and it will have to be sourced separately. The installation should be similar to the ARB Installation in the following Steps.
2. Position the Air Pump on the MOLLE Storage Basket. There are multiple hole patterns for different Air Pumps. Line the Air Pump with the necessary mounting points. *Figure 7.*

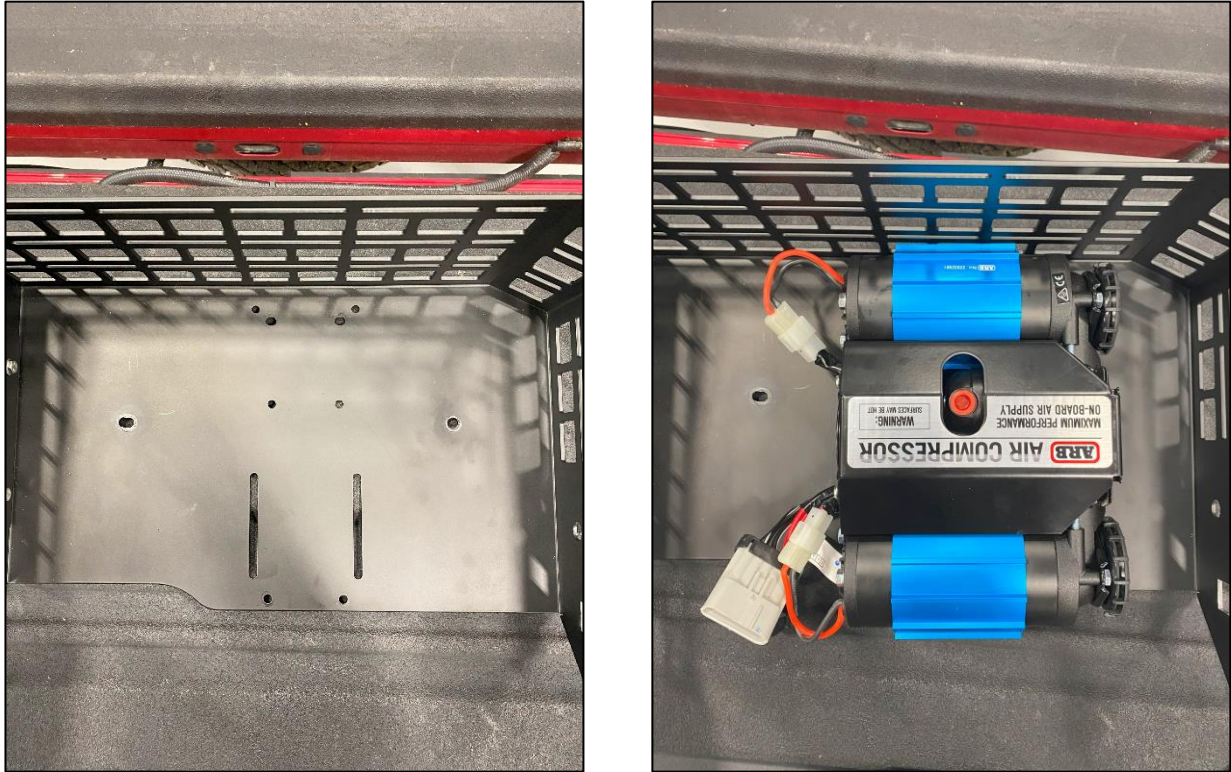


Figure 7

3. Use the supplied Air Pump Hardware to secure the Air Pump to the MOLLE Storage Basket from the underside of the Storage Basket.
4. Locate the fittings for the Air Pump. Use either Teflon Tape or Thread Sealant on the threaded portions of the fittings. *Figure 8.*



Figure 8



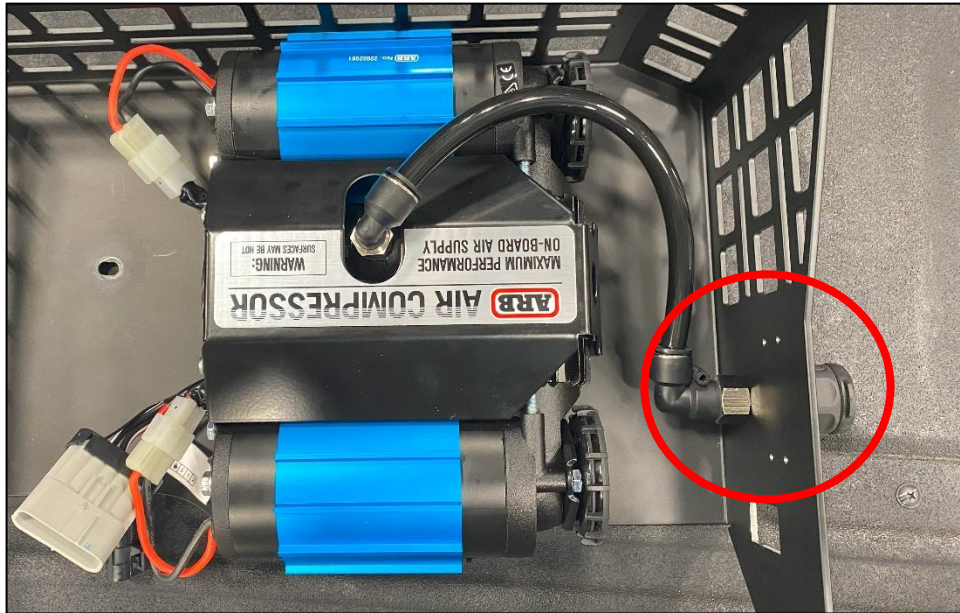
5. Install the 90 Degree Air Pump Fitting onto the top of the ARB Pump. *Figure 9.*



*Figure 9*



6. Install the Hose Coupler Fitting and the other 90 Degree Fitting into the side of the MOLLE Storage Basket, sandwiching the Basket between the two fittings. *Figure 10.*



*Figure 10*

7. Locate the hose supplied with the Air Pump. Cut the Hose to size and install it into the open ports of the fittings installed in Steps 5-6. *Figure 11.*



Figure 11

8. If desired, install the Switch into the Port next to the Hose Coupler Fitting in the MOLLE Panel. *Figure 12.*

**NOTE:** Due to differences in design and tolerances between different brands of Switches, the opening in the MOLLE Panel may need to be slightly clearanced to accommodate the switch.



Figure 12

9. Refer back to [Step 6: MOLLE PANEL STORAGE INSTALLATION](#) to install the MOLLE Storage Basket and Air Pump Assembly into the vehicle.
10. There are multiple ways to power the Air Pump depending on how you want to use it. Follow the supplied instructions with the ARB Pump (or Air Pump of choice) to run the lines to power and control the pump as desired.

**END**

**Additional Technical Support:**  
Contact Z1 Off-Road at [info@z1offroad.com](mailto:info@z1offroad.com)  
Or call 678-839-8019 between 9am and 6pm ET