

Z1 OFF-ROAD REAR SWAY BAR END LINKS INSTALLATION MANUAL



This Installation Manual is intended for the following models:

2016+

Titan A61

PROLOGUE:

Study these instructions completely before proceeding to assembly. The installer must have a thorough knowledge of automotive systems operation. If unfamiliar with any of the concepts outlined in this instruction, we recommend the installation be completed by a qualified professional.

WARNING!

Extreme caution should be taken when performing maintenance or performance upgrades to your vehicle. Please observe and abide by any Warning or Caution labels placed on the various components and tools used when servicing your vehicle. If you have any questions regarding installation or the various components included with the Z1 Off-Road Rear Sway Bar End Links, consult with a Professional Mechanic or contact Z1 Off-Road for more information.

PARTS INCLUDED:

Item	Quantity	Description
1	2	Assembled End Link
2	4	Nylon Locknut
3	4	Washer

TOOLS REQUIRED:

- Hydraulic Jack
- (2) 2-Ton (or greater) Jack Stands
- Ratchet
- Ratchet Extension(s)
- Assorted Metric Sockets (up to 22mm)
- Assorted Metric Wrenches (up to 22mm)
- Torque Wrench
- Hammer
- Grease Pump
- Grease

SAFETY REQUIREMENTS:

- Always wear safety glasses and any necessary protective garments. If using any fluids, chemicals, or solvents, a respirator is recommended.
- Always use properly rated jack stands when working under your vehicle.
- Always keep limbs and parts away from moving drivetrain parts.
- Always turn the ignition to the OFF position and disconnect the NEGATIVE battery terminal.
- Only operate drivetrain in safe space and well-ventilated areas.

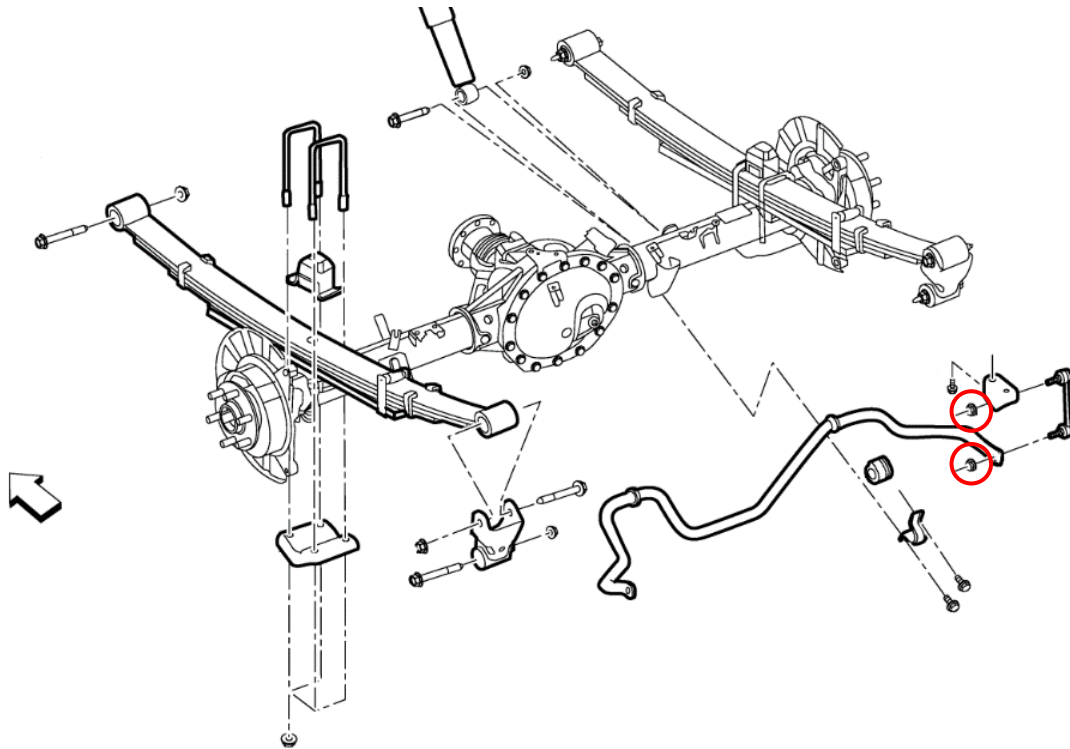
BEFORE YOU BEGIN:

Remove contents from the Z1 Off-Road Rear Sway Bar End Links and verify that ALL necessary hardware is present.

PROCEDURE:

1. Place the transmission in Park position (or in Reverse gear if equipped with a manual transmission). Apply the parking brake.
2. Locate proper jacking points on vehicle's chassis (refer to vehicle's Owner Manual). Raise and support vehicle using jack & jack stands.

Use the diagram and picture below as reference for the following steps:



3. Remove the (2) nuts on each side of the vehicle securing the OEM sway bar end links to the sway bar and the brackets on the chassis (the nuts are circled in the diagram above).
4. Remove OEM end links. You may need to hit the end with a hammer if they are stuck.
5. Locate Z1 Off-Road End Links. Remove the provided nuts and washers from the threaded ends and ensure the grease fittings on the ends are tight.
6. For stock ride height trucks, set the Z1 end links next to the OEM end links and adjust the Z1 end links length to match the OEM ones. To do this you will need to loosen the jam nuts, then rotate the rod ends to thread them in or out. Make sure the rod ends are threaded an even amount on both ends. Once the length is set, tighten the jam nuts. For lifted trucks, it is recommended to measure the distance from the center of the sway bar mounting hole to the bracket on the chassis, with the truck on the ground, the sway bar parallel to the ground, and the OEM end links disconnected. Then adjust the Z1 end links accordingly. The maximum safe length of the rear end links is 260mm center-to-center.
7. Position Z1 end links onto vehicle.
8. Secure the Z1 end links to the sway bar and brackets on chassis with the provided washers and nuts. Torque nuts to 58ft-lbs.
9. Using red axle grease or equivalent, add grease into both grease fittings on each end link until you notice some grease come out of the boot or the boot start to swell up. Do not overfill the boot to the point that it tears.
10. Check vehicle for loose tools/items.
11. Properly lower vehicle from jackstands.
12. Perform a final test drive of vehicle.

END

Additional Technical Support:

Contact Z1 Off-Road at info@z1offroad.com
Or call 678-839-8019 between 9am and 6pm ET