

Z1 TITAN REAR LEAF-SPRING LIFT BLOCKS INSTALLATION MANUAL



This Installation Manual is intended for the following models:	
2004-2015	Nissan Titan (A60)
2016+	Nissan Titan (A61)

PROLOGUE:

Study these instructions completely before proceeding to assembly. The installer must have a thorough knowledge of automotive systems operation. If unfamiliar with any of the concepts outlined in this instruction, we recommend the installation be completed by a qualified professional.

WARNING!

Extreme caution should be taken when performing maintenance or performance upgrades to your vehicle. Please observe and abide by any Warning or Caution labels placed on the various components and tools used when servicing your vehicle. If you have any questions regarding installation or the various components included with the Z1 Off-Road Titan Rear Leaf-Spring Lift Blocks, consult with a Professional Mechanic or contact Z1 Off-Road for more information.

PARTS INCLUDED:

Item	Quantity	Description
1	2	Z1 Off-Road Rear Leaf Spring Block
2	2	Z1 Off-Road Extended U-Bolt
3	8	M14 Lock Nut
4	8	Flat Washer

TOOLS REQUIRED:

- Hydraulic Jack
- (2) 2-Ton (or greater) Jack Stands
- Ratchet
- Ratchet Extension(s)
- Assorted Metric Sockets (up to 22mm)
- Assorted Metric Wrenches (up to 22mm)
- Torque Wrench

SAFETY REQUIREMENTS:

- Always wear safety glasses and any necessary protective garments. If using any fluids, chemicals, or solvents, a respirator is recommended.
- Always use properly rated jack stands when working under your vehicle.
- Always keep limbs and parts away from moving drivetrain parts.
- Always turn the ignition to the OFF position and disconnect the NEGATIVE battery terminal.
- Only operate drivetrain in safe space and well-ventilated areas.

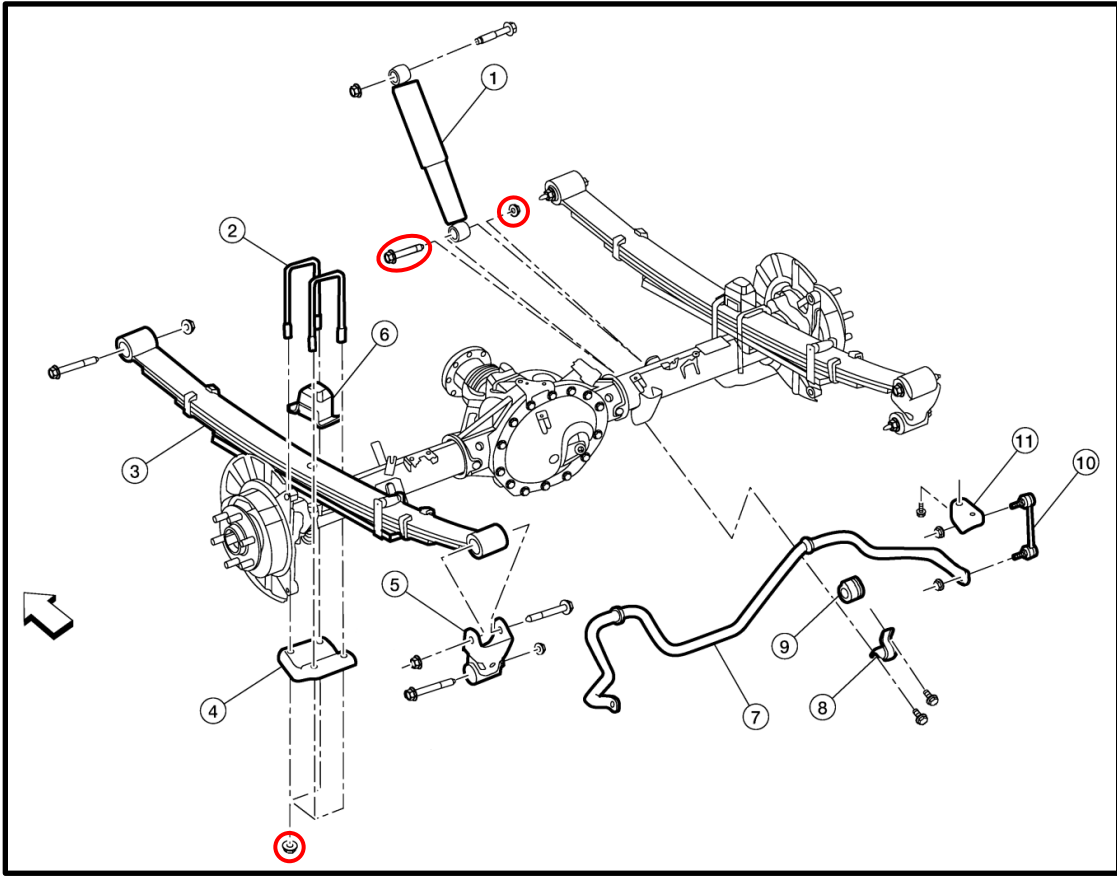
BEFORE YOU BEGIN:

Remove contents from the Z1 Off-Road Titan Rear Leaf-Spring Lift Blocks and verify that ALL necessary hardware is present.

PROCEDURE:

1. Place the transmission in Park position (or in Reverse gear if equipped with a manual transmission). Apply the parking brake.
2. Locate proper jacking points on vehicle's chassis (refer to vehicle's Owner Manual). Raise and support vehicle using jack & jack stands. Leave the jack under the rear differential.

3. Remove the (4) bolts on each side securing the leaf spring lower seats (4) to the U-bolts (2) (1 driver side nut circled below).



4. Remove the lower mounting nut and bolt on each shock absorber (1) (passenger side circled above).
5. Carefully lower the jack and differential to provide enough room to slide in the Z1 lift blocks.



6. Locate the new Z1 Off-Road Rear Leaf Spring Blocks. Install the Z1 blocks in between the OEM leaf springs and axle tube. Pay attention to the arrow on the side denoting the direction the block should face.



Note: Each block has a locating nub on the bottom to properly align the block with the axle. Once the nub is seated, rotate the block to get it parallel with the vehicle.

7. Raise jack to raise the differential and axle until the Z1 block reaches the bottom of the leaf springs.
8. Locate the new Z1 Off-Road U-Bolts.
9. Secure the factory leaf spring lower seats that were removed in step # 3 with (2) supplied extended u-bolts and (4) supplied lock nuts and washers on each side. Torque nuts diagonally and evenly to 113ft-lbs.



10. Raise jack and differential to reinstall lower shock absorber nut and bolt that was removed in step # 4. Torque to 134ft-lbs.

END

11. Inspect vehicle for any loose tools/items.
12. Perform a final test drive of vehicle.

Additional Technical Support:
Contact Z1 Off-Road at info@z1offroad.com
Or call 678-839-8019 between 9am and 6pm ET