

# Z1 A61 TITAN TRANSMISSION AND TRANSFER CASE SKID PLATE INSTALLATION MANUAL



This Installation Manual is intended for the following models:

2016+

Nissan Titan

## PROLOGUE:

Study these instructions completely before proceeding to assembly. The installer must have a thorough knowledge of automotive systems operation. If unfamiliar with any of the concepts outlined in this instruction, we recommend the installation be completed by a qualified professional.

## WARNING!

Extreme caution should be taken when performing maintenance or performance upgrades to your vehicle. Please observe and abide by any Warning or Caution labels placed on the various components and tools used when servicing your vehicle. If you have any questions regarding installation or the various components included with the Z1 Off-Road A61 Titan Transmission and Transfer Case Cover, consult with a Professional Mechanic or contact Z1 Off-Road for more information.

## **PARTS INCLUDED:**

Item	Quantity	Description
1	1	Z1 Transfer Case Cover
2	4	M8 x 30mm Bolt

## **TOOLS REQUIRED:**

- Hydraulic Jack
- (2) 2-Ton (or greater) Jack Stands
- Ratchet
- Ratchet Extension(s)
- Assorted Metric Sockets (up to 21mm)
- Assorted Metric Wrenches (up to 21mm)
- Torque Wrench

## **SAFETY REQUIREMENTS:**

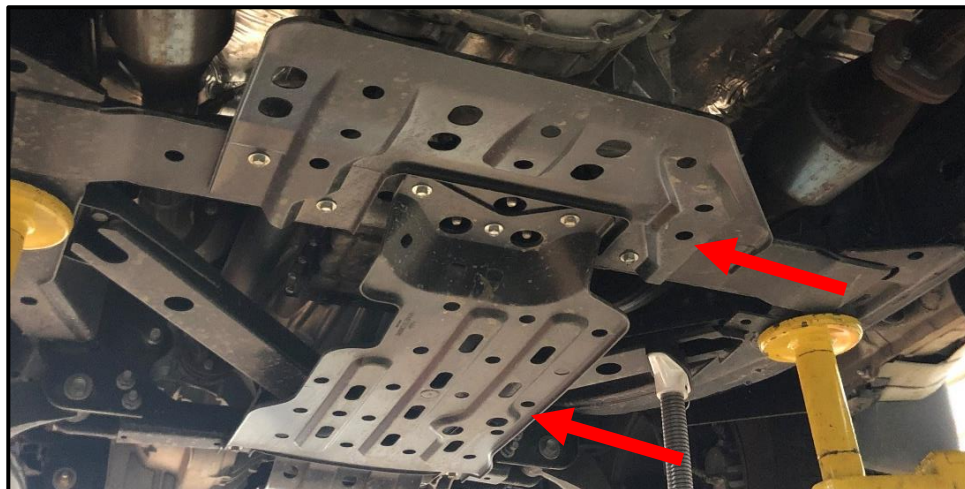
- Always wear safety glasses and any necessary protective garments. If using any fluids, chemicals, or solvents, a respirator is recommended.
- Always use properly rated jack stands when working under your vehicle.
- Always keep limbs and parts away from moving drivetrain parts.
- Always turn the ignition to the OFF position and disconnect the NEGATIVE battery terminal.
- Only operate drivetrain in safe space and well-ventilated areas.

## **BEFORE YOU BEGIN:**

Remove contents from the Z1 Off-Road A61 Titan Transmission and Transfer Case Cover and verify that ALL necessary hardware is present.

## **PROCEDURE:**

1. Place the transmission in Park position (or in Reverse gear if equipped with a manual transmission). Apply the parking brake.
2. Locate proper jacking points on vehicle's chassis (refer to vehicle's Owner Manual). Raise and support vehicle using jack & jack stands.
3. Remove the OEM transmission and transfer case covers by removing the bolts securing them to the vehicle.



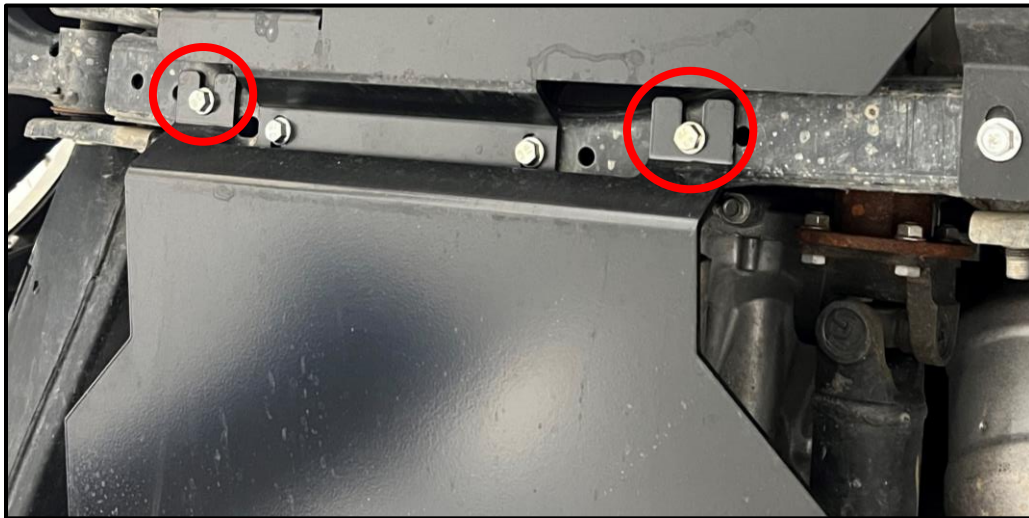
4. Locate the Z1 Transmission and Transfer Case Cover and (4) supplied M8 bolts.

5. Thread (2) bolts into the threaded mounting holes on the crossmember under the engine/transmission (as shown).

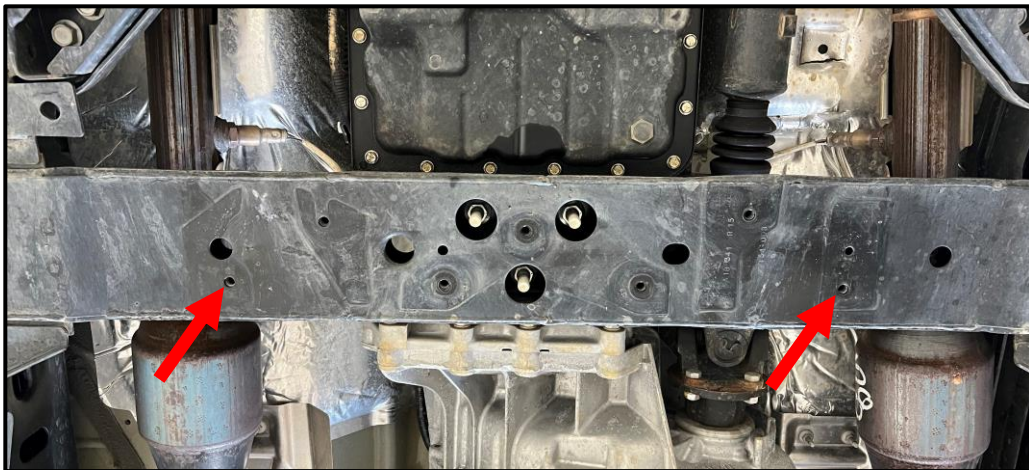


Note: Hardware used in the images in this guide were samples and may differ from production.

6. Position the Z1 cover onto to the bolts by sliding the front slotted brackets around the bolts (circled below).

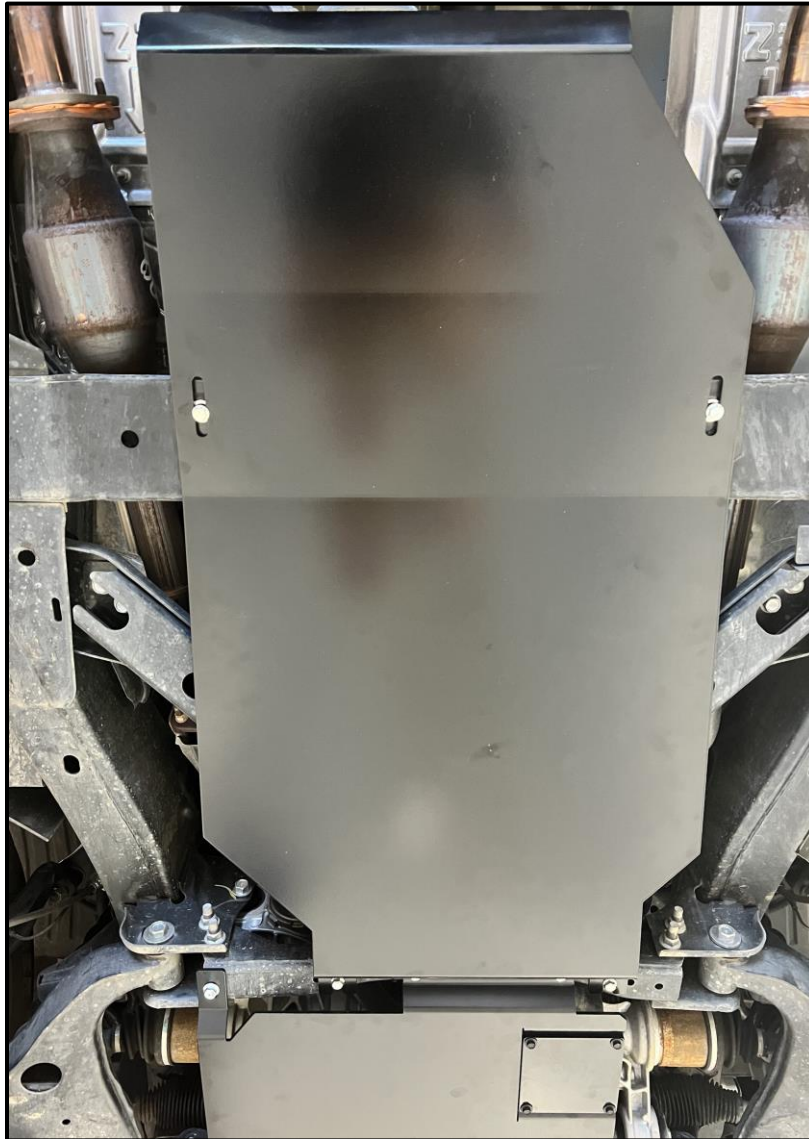


7. With the front of the cover supported by the bolts, support the rear with one arm and thread the remaining (2) bolts into the crossmember beneath the transmission/transfer case with the other.





- Completed installation of the Z1 Off-Road Titan Transmission and Transfer Case Cover should look as shown below.



- Inspect vehicle for loose tools/items.
- Properly lower vehicle from jack stands.
- Perform a final test drive of the vehicle.

**END**

**Additional Technical Support:**  
Contact Z1 Off-Road at [info@z1offroad.com](mailto:info@z1offroad.com)  
Or call 678-839-8019 between 9am and 6pm ET