

Z1 XTERRA GRILLE LIGHTS INSTALLATION MANUAL



This Installation Manual is intended for the following models:

2005-2009

Nissan Xterra

PROLOGUE:

Study these instructions completely before proceeding to assembly. The installer must have a thorough knowledge of automotive systems operation. If unfamiliar with any of the concepts outlined in this instruction, we recommend the installation be completed by a qualified professional.

WARNING!

Extreme caution should be taken when performing maintenance or performance upgrades to your vehicle. Please observe and abide by any Warning or Caution labels placed on the various components and tools used when servicing your vehicle. If you have any questions regarding installation or the various components included with the Z1 Off-Road Xterra Grille Lights, consult with a Professional Mechanic, or contact Z1 Off-Road for more information.

PARTS INCLUDED:

Item	Quantity	Description
1	1	Grille Light Harness
2	1	Add-A-Circuit Fuse
3	4	Light Bracket
4	8	M3 x 8mm Thumb Screw
5	8	M3 x 0.5 Hex Nut
6	4	Zip Tie

TOOLS REQUIRED:

- Ratchet
- Ratchet Extension(s)
- Assorted Metric Sockets
- Assorted Metric Wrenches
- Flathead Screwdriver/Trim Removal Tool

SAFETY REQUIREMENTS:

- Always wear safety glasses and any necessary protective garments. If using any fluids, chemicals, or solvents, a respirator is recommended.
- Always use properly rated jack stands when working under your vehicle.
- Always keep limbs and parts away from moving drivetrain parts.
- Always turn the ignition to the OFF position and disconnect the NEGATIVE battery terminal.
- Only operate drivetrain in safe space and well-ventilated areas.

BEFORE YOU BEGIN:

Remove contents from the Z1 Off-Road Xterra Grille Lights and verify that ALL necessary hardware is present.

PROCEDURE:

1. Place the transmission in Park position (or in Reverse gear if equipped with a manual transmission). Apply the parking brake.
2. Open and support the hood of the vehicle.
3. Remove the (6) six plastic clips securing the Front Grille to the vehicle. *Figure 1.*



Figure 1

4. Remove the Front Grille from the vehicle, there will be smaller plastic tabs on the bottom of the Grille holding it on. *Figure 2.*



Figure 2

5. Locate the (4) four Light Brackets, (4) four Lights, and (8) eight M3 x 0.8 Nuts. Secure the Lights to the Mounting Brackets with the Nuts as shown below. *Figure 3.*

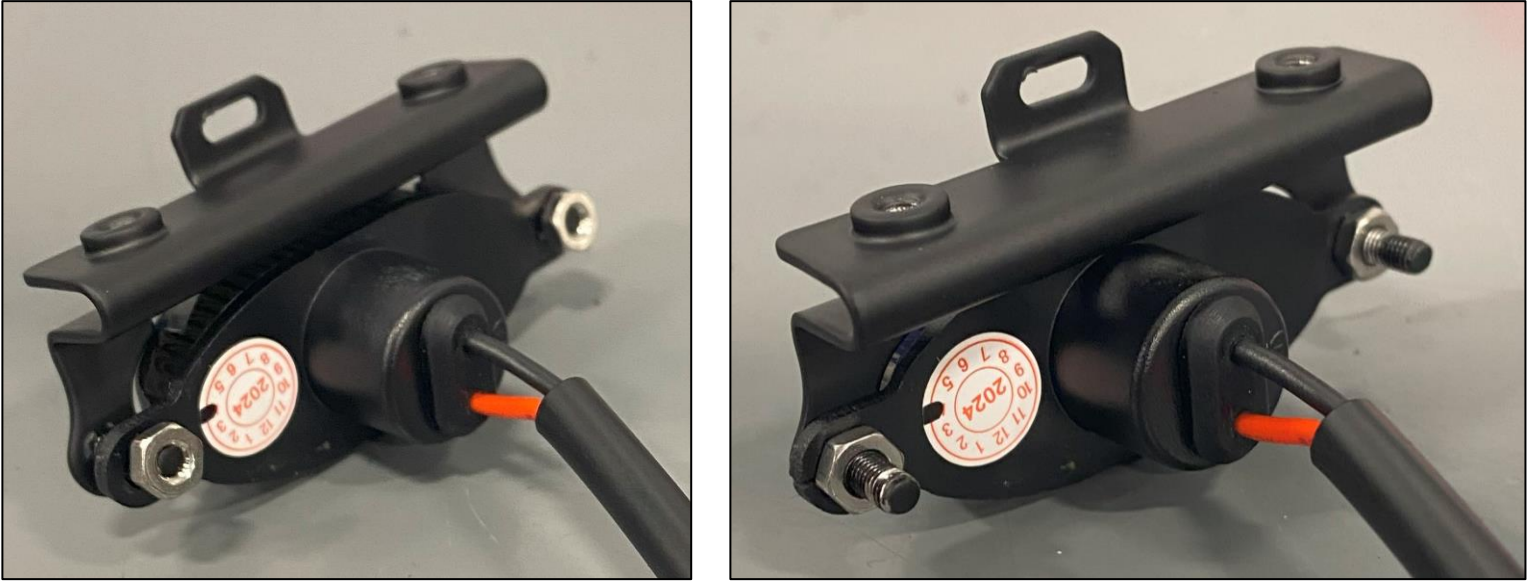


Figure 3

6. Locate (8) eight M3 thumbscrews. Position the Grille Lights in the Grille as shown below. Secure with the Thumb Screws. *Figure 4.*

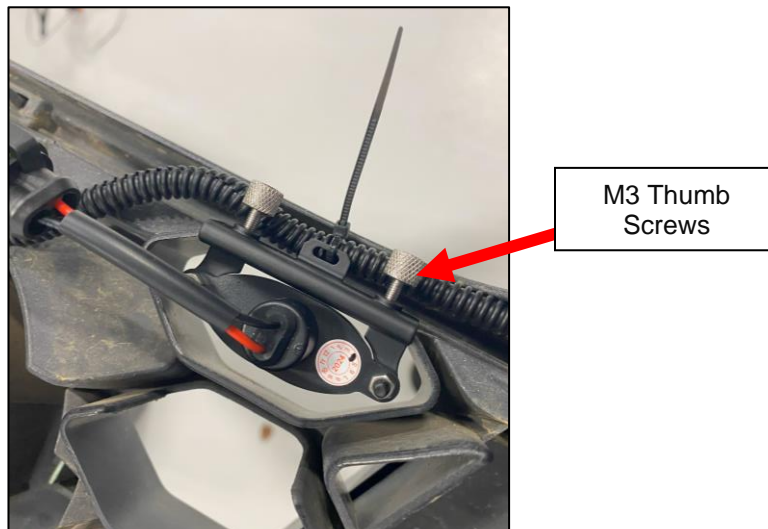
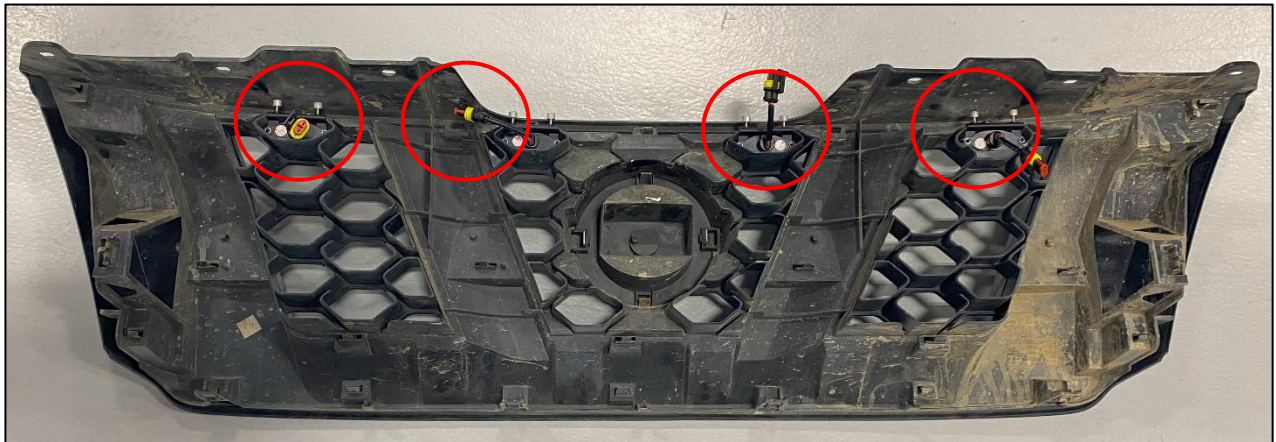


Figure 4

7. Locate the main Wiring Harness for the Grille Lights. Connect each light to the Wiring Harness. You can optionally secure the wires to the Light Brackets with the included Zip Ties. *Figure 5.*

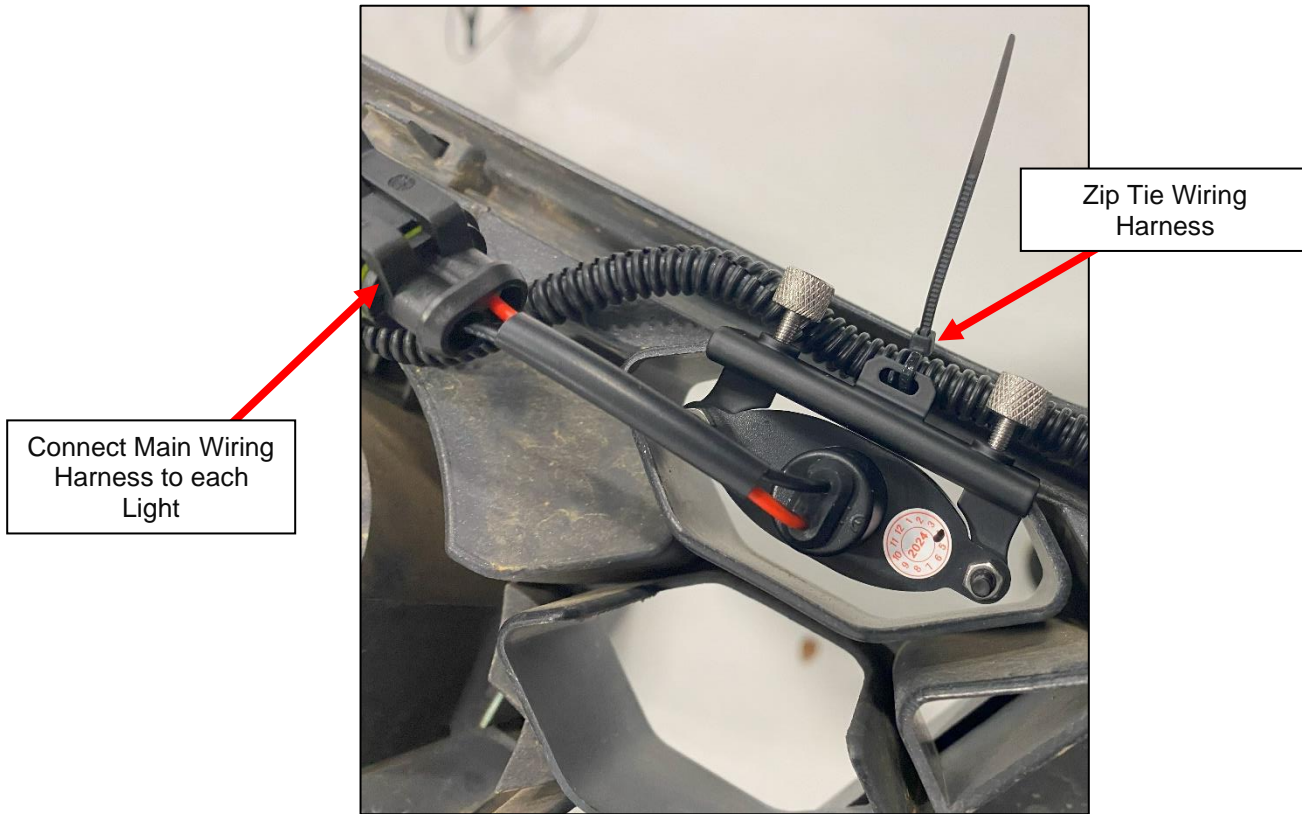


Figure 5

8. Reinstall the Front Grille to the vehicle and reinstall all plastic clips.

9. Your desired setup will determine how to run the Power and Ground wires from the main Wiring Harness. We ran ours to the Fuse Box in the passenger side of the engine bay. Run the wires to the Fuse Box and avoid any moving parts of the engine or sharp corners that can cut/wear the Wiring Harness. *Figure 6.*

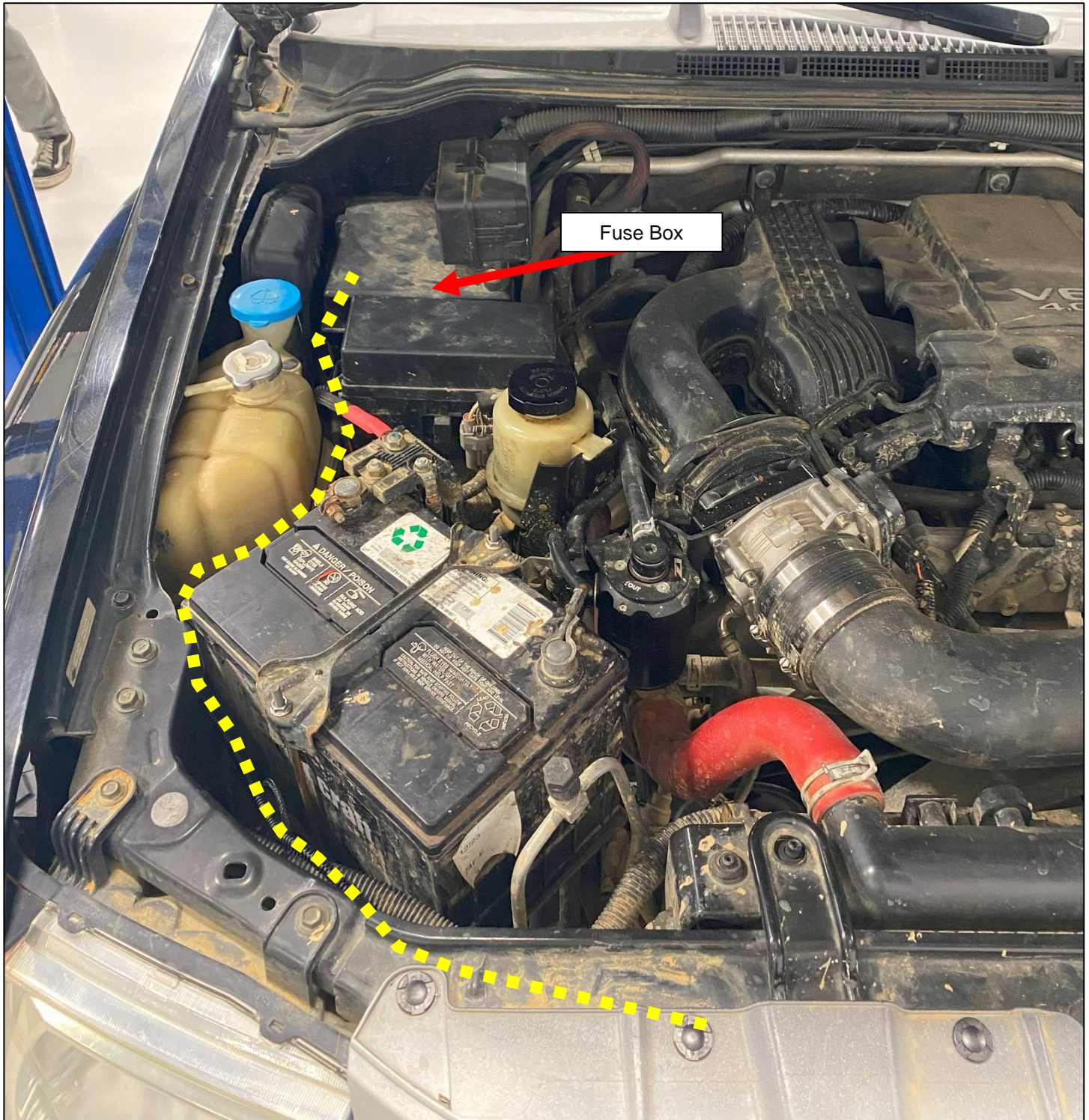


Figure 6

10. Locate a suitable ground location. We chose the pre-existing ground next to the Fuse Box. Remove the Bolt and place the Ground (Black) Wire into position and retighten the bolt. *Figure 7.*



Figure 7

11. Open the Fuse Box and determine which Fuse you want to tap into. We chose the Fuse for the Radio, so the Lights will only come on with the Key in the ON position. Use your Owner's Manual for a Fuse Box Diagram to determine the proper fuse.

12. Remove the desired Fuse and install the Add-a-Circuit into the now open slot. *Figure 8.*

NOTE: Be aware of the amperage of the fuse being removed. The Add-a-Circuit uses a 10 Amp Fuse and may need to be swapped out if you choose to tap into a 15 or 20 Amp location.

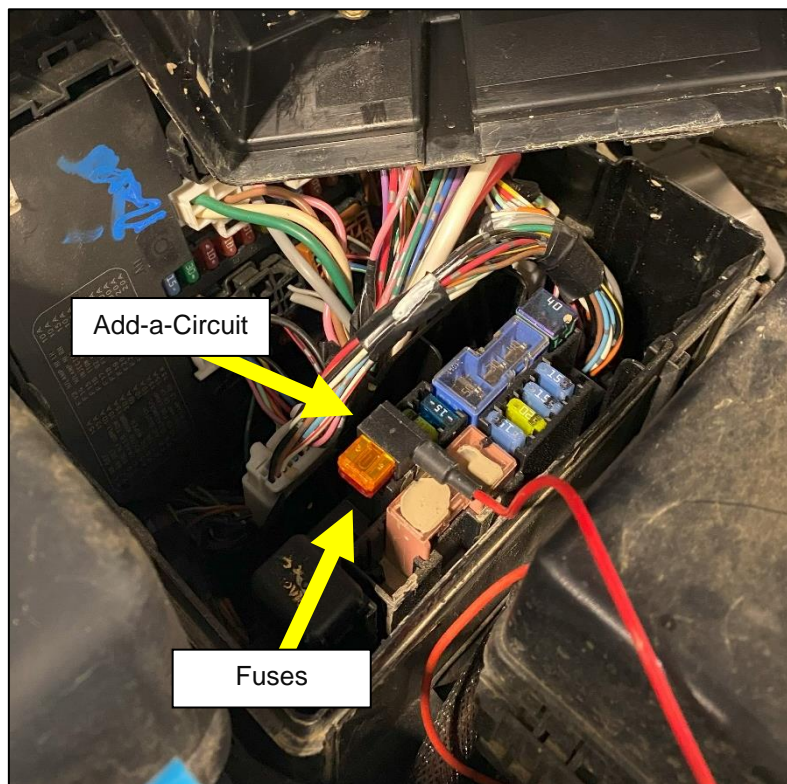


Figure 8

13. Test that the lights work by turning the Key to the ON position or turn the vehicle on if you selected another Fuse.
14. Notch the Fuse Box with a file, scissors, or another similar tool to allow the wire to run through the box without being pinched. *Figure 9.*

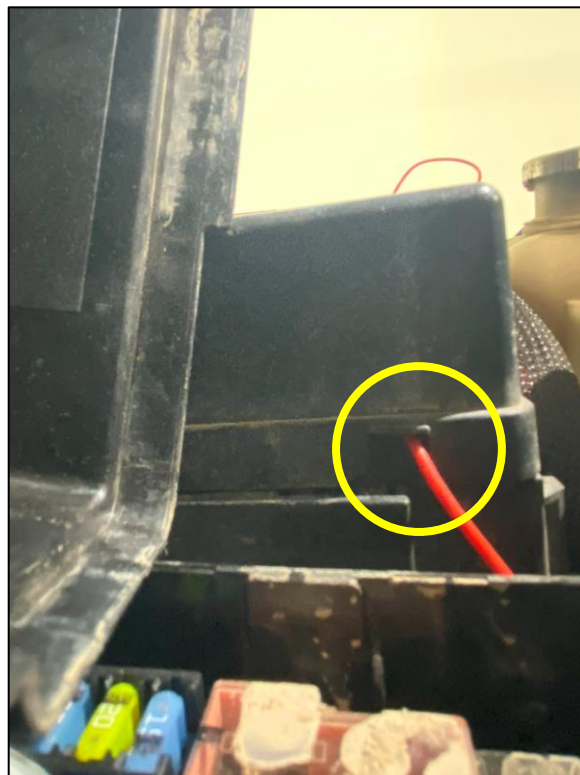
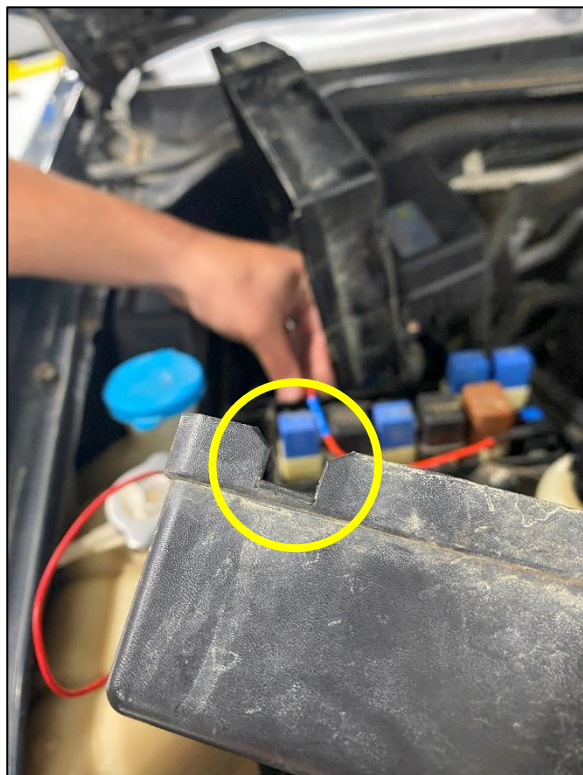


Figure 9

15. Reinstall the Fuse Box Cover and test function of the Z1 Grille Lights again. *Figure 10.*



Figure 10

END

Additional Technical Support:
Contact Z1 Off-Road at info@z1offroad.com
Or call 678-839-8019 between 9am and 6pm ET