

Z1 OFF-ROAD XTERRA ROCK SLIDERS INSTALLATION MANUAL



This Installation Manual is intended for the following models:	
2005-2015	Nissan Xterra (N50)

PROLOGUE:

Study these instructions completely before proceeding to assembly. The installer must have a thorough knowledge of automotive systems operation, safety, and sound maintenance practices. If unfamiliar with any of the concepts outlined in this instruction, we recommend the installation be completed by a qualified professional.

WARNING!

Extreme caution should be taken when performing maintenance or performance upgrades to your vehicle. Please observe and abide by any Warning or Caution labels placed on the various components and tools used when servicing your vehicle. If you have any questions regarding installation or the various components included with the Z1 Off-Road Xterra Rock Slider Kit, consult with a Certified Mechanic or contact Z1 Motorsports for more information.

PARTS INCLUDED:

Item	Quantity	Description
1	1	Rock Slider, LH
2	1	Rock Slider, RH
3	2	Short Shoulder Sleeve
4	2	Long Shoulder Sleeve
5	2	Forward Frame Hook
6	2	Middle Front Frame Hook
7	2	Middle Frame Wrap
8	4	M10 Steel Oversized Washer
9	8	M14 Steel Oversized Washer
10	8	M10 Steel Washer
11	4	M10 x 1.25 Hex Bolt, 40mm
12	4	M14 x 2.0 Hex Bolt, 130mm
13	4	M10 x 1.50 Nylon Locknut
14	4	M14 x 2.0 Nylon Locknut
15	4	M10 x 1.5 Flanged Button Head Screw, 35mm

TOOLS REQUIRED:

- Hydraulic Floor Jack
- Ratchet with Extension(s)
- Assorted Metric Sockets
- Assorted Metric Wrenches
- Torque Wrench

SAFETY REQUIREMENTS:

- Always wear safety glasses and any necessary protective garments. If using any fluids, chemicals, or solvents, a respirator is recommended.
- Always use properly rated jack stands when working under your vehicle.
- Always keep limbs and parts away from moving drivetrain parts.
- Always turn the ignition to the OFF position and disconnect the NEGATIVE battery terminal.
- Only operate drivetrain in safe space and well-ventilated areas.

BEFORE YOU BEGIN:

Remove contents from the Z1 Off-Road Xterra Rock Sliders and verify that **ALL** necessary hardware is present. We recommend treating the (6) six frame mounting locations for corrosion (if required) prior to installation.

PROCEDURE:

1. Place the transmission in Park position on a level surface and apply the parking brake.
2. Raise and support the vehicle with a jack and jack stands.

NOTE: This installation can be done with the vehicle on the ground, but it is easier with the vehicle raised.

3. Some trucks will have a OEM Side Step Rail that will need to be removed before continuing to *Step 4*.
4. Clean the Frame Rails of dirt and debris if necessary.
5. Remove the Front Mud Guards of the Rear Wheel Wells if installed.
6. Starting on the passenger side of the vehicle, feed (1) one Long Shoulder Sleeve with (1) one M14 x 2.0 Hex Bolt, 130mm and (1) one M14 Steel Oversized Washer through the frame rail towards the front of the car behind the transmission crossmember. *Figure 1*.

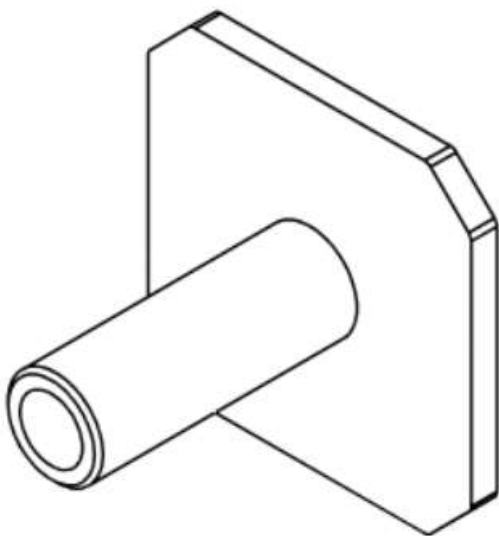


Figure 1

7. Insert the (1) one Short Shoulder Sleeve (*Figure 3*), and (1) one M14 x 2.0 Hex Bolt, 130mm with (1) one M14 Steel Oversized Washer through the opening in the middle of the frame. View *Figure 2* below.

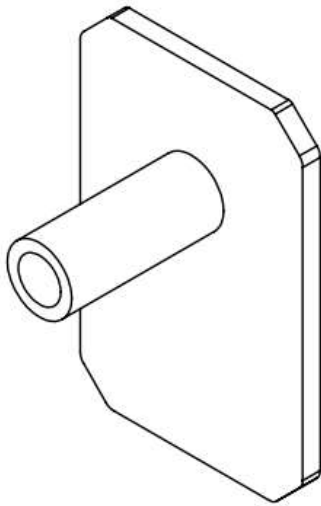


Figure 2

8. The Wiring Harness on the outside of the Passenger Side Frame Rail will most likely need to be moved. Unclip the Wiring Harness and secure it higher up with a zip tie. *Figure 3.*

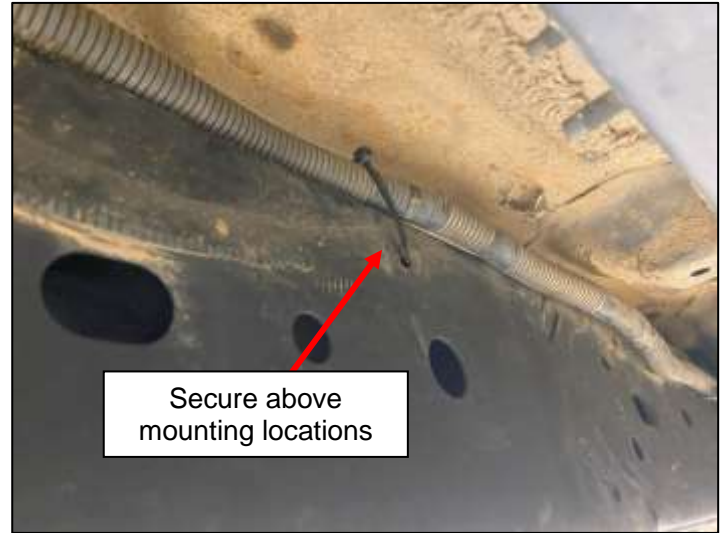


Figure 3

9. With the help of a jack or partner, position the RH Rock Slider on the outboard side of the frame over the (2) two preinstalled sleeves from *Steps 5-6*. Using (2) two M14 Steel Oversized Washers, and (2) two M14 x 2.0 Nylon Locknuts, secure the RH Rock Slider to the frame. Do not torque down the Locknuts as we will remove them in a few steps.

NOTE: Z1 Off-Road Rock Sliders have (2) two mounting locations. The top holes are for OEM body mounts (the most common) and lower holes are for aftermarket 2 inch body lifts. See *Figure 4* below.

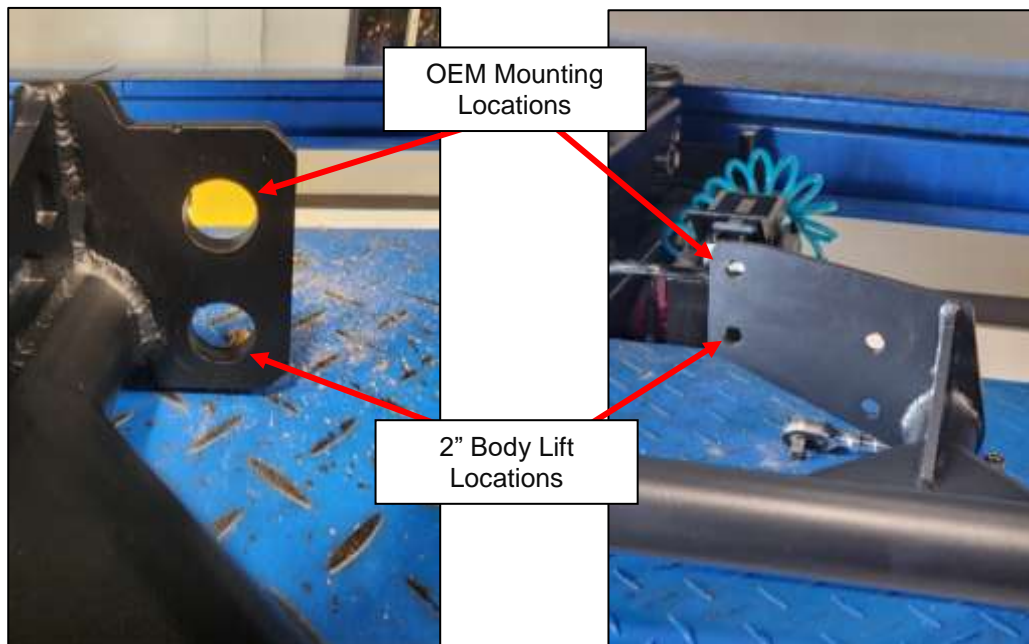


Figure 4

10. Locate (2) two M10 x 1.25 Hex Bolts, 40mm with (2) two M10 Oversized Steel Washers, and loosely install in the rear mounting location pictured below in *Figure 5*.

NOTE: The threaded holes may have to be chased and cleaned if they are filled with dirt and debris.



Figure 5

11. With the Rock Slider now supported by the bolts, remove the previously installed M14 x 2.0 Locknut and M14 Steel Washer in the middle mounting location.
12. Locate (1) one Middle Front Frame and loosely install it onto the outside of the middle mounting plate of the Rock Slider frame using the previously removed M14 Washer and M14 x 2.0 Locknut. See *Figure 6* below.

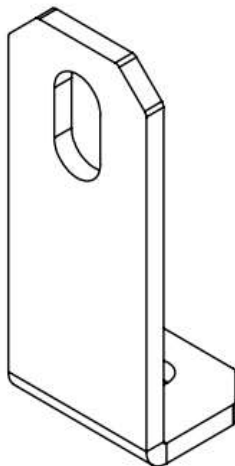


Figure 6

13. Loosely reinstall the M14 Washer and M14 x 2.0 Locknut, seen in *Figure 6*.
14. Locate (1) one Middle Frame Wrap, and install it on the outside of the Short Shoulder Sleeve using the already installed M14 x 2.0 Hex Bolt, 130mm and M14 Oversized Washer. *Figure 7*.

NOTE: Use of a jack can help keep the Frame Wrap in position.

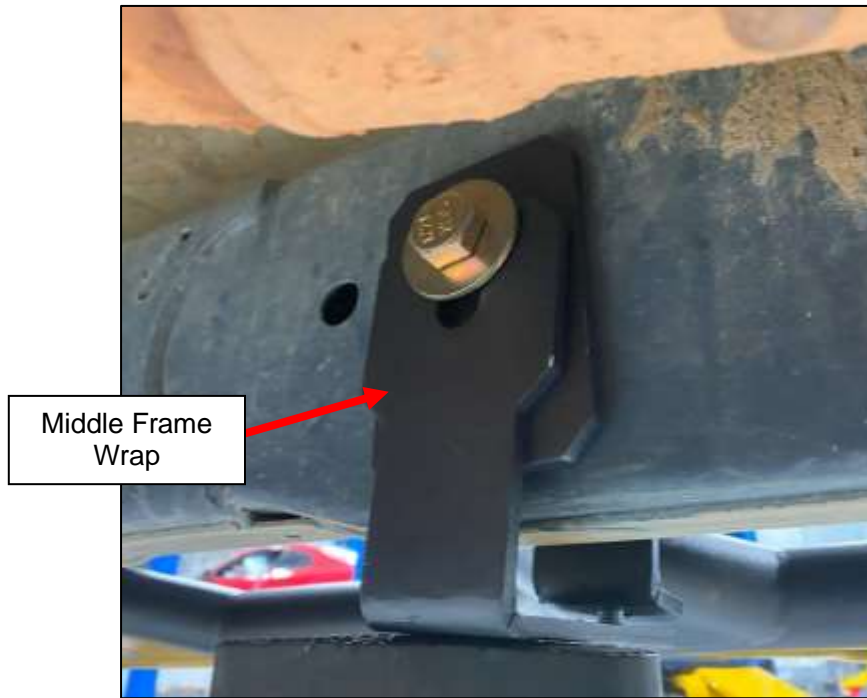


Figure 7

15. Locate (1) one M10 x 1.5 Flanged Button Head Screw, 35mm, (2) two M10 Washers, and (1) one M10 x 1.50 Nylon Locknut. Using the hardware, loosely attach the Middle Frame Wrap to the Middle Front Frame Hook. See *Figure 8* below.



Figure 8

16. Remove the previously installed M14 x 2.0 Locknut and M14 Steel Washer from the forward mounting plate of the Rock Slider.
17. Locate (1) one Forward Frame Hook and loosely install it onto the forward mounting plate of the Rock Slider frame using the previously removed M14 Washer and M14 x 2.0 Locknut. See *Figure 9* below.

NOTE: The Forward Frame Hooks are specific to the Left and Right Sides. They will only fit one side properly.

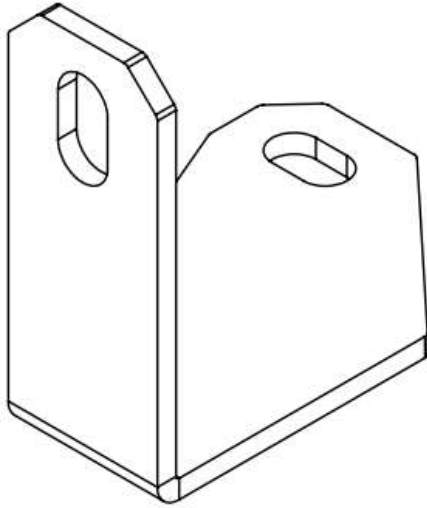


Figure 9

18. Loosely reinstall the M14 Washer and M14 x 2.0 Locknut, seen in *Figure 9*.
19. Locate (1) one M10 x 1.5 Button Head Screw, (1) one M10 x 1.50 Locknut, and (2) two M10 Steel Washers. Loosely join the Forward Frame Hook and the Frame of the truck together with the hardware, *Figure 10*.



Figure 10

20. Support the slider with a floor jack or a partner to achieve desired alignment. It's recommended to keep at least $\frac{3}{8}$ " to $\frac{1}{2}$ " between the Rock Slider and the OEM pinch welds. *Figure 11.*



Figure 11

21. With the slider supported and aligned to your preference, tighten the (2) two M14 x 2.0 Hex Bolts, 120mm and M14 x 2.0 Nylon Locknuts to **75 ft-lbs**, starting with the middle bolt and then the front. *Figure 12.*



Figure 12

22. On the rear frame mount, torque the (2) two M10 x 1.25 Hex Bolts to **37 ft-lbs.** *Figure 13.*



Figure 13

23. Tighten the Forward Frame Hook and Middle Frame Hook M10 x 1.5 Flanged Button Head Screws and M10 x 1.50 Nylon Locknuts to **37 ft-lbs.** *Figure 14.*



Figure 14

24. Remove the floor jack if used to support the Rock Slider and verify alignment. Adjust as necessary. *Figure 15.*



Figure 15

25. Repeat Steps 6-24 for the LH Rock Slider.

26. Remove and account tools from vehicle.

END

Additional Technical Support:
Contact Z1 Off-Road at info@z1offroad.com
Or call 678-839-8019 between 9am and 6pm ET