

Z1 2023+ NISSAN Z TRANSMISSION MOUNT INSTALLATION MANUAL



This Installation Manual is intended for the following models:

2023+

Nissan Z

PROLOGUE:

Study these instructions completely before proceeding to assembly. The installer must have a thorough knowledge of automotive systems operation. If unfamiliar with any of the concepts outlined in this instruction, we recommend the installation be completed by a qualified professional.

WARNING!

Extreme caution should be taken when performing maintenance or performance upgrades to your vehicle. Please observe and abide by any Warning or Caution labels placed on the various components and tools used when servicing your vehicle. If you have any questions regarding installation or the various components included with the Z1 Motorsports 2023+ Nissan Z Transmission Mount, consult with a Professional Mechanic or contact Z1 Motorsports for more information.

PARTS INCLUDED:

Item	Quantity	Description
1	1	Assembled Z1 Transmission Mount

TOOLS REQUIRED:

- Hydraulic Jack
- (2) 2-Ton (or greater) Jack Stands
- Ratchet
- Ratchet Extension(s)
- 14mm Socket/Wrench
- 15mm Socket/Wrench
- Torque Wrench

SAFETY REQUIREMENTS:

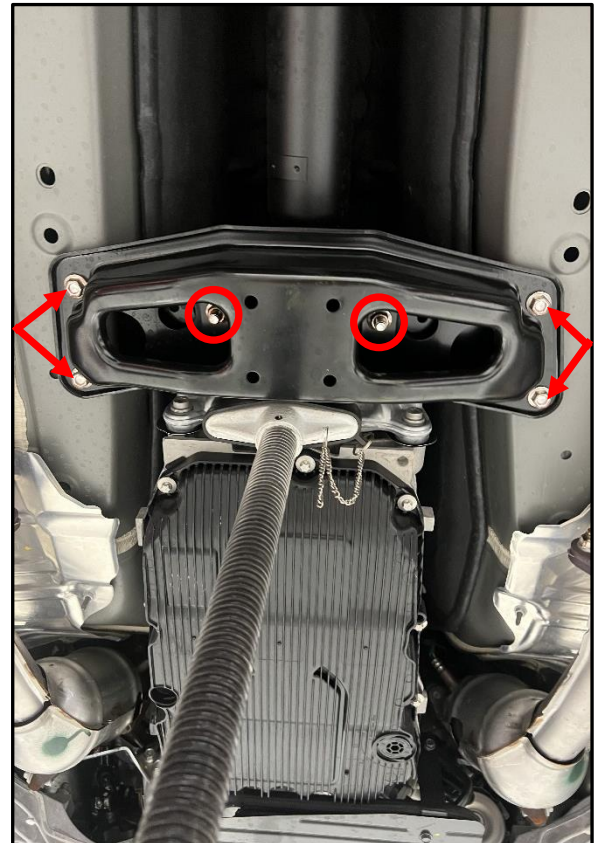
- Always wear safety glasses and any necessary protective garments. If using any fluids, chemicals, or solvents, a respirator is recommended.
- Always turn the ignition to the OFF position and disconnect the NEGATIVE battery terminal.
- Always use properly rated jack stands when working under your vehicle.
- Always keep limbs and parts away from moving drivetrain parts.
- Only operate drivetrain in safe space and well-ventilated areas.

BEFORE YOU BEGIN:

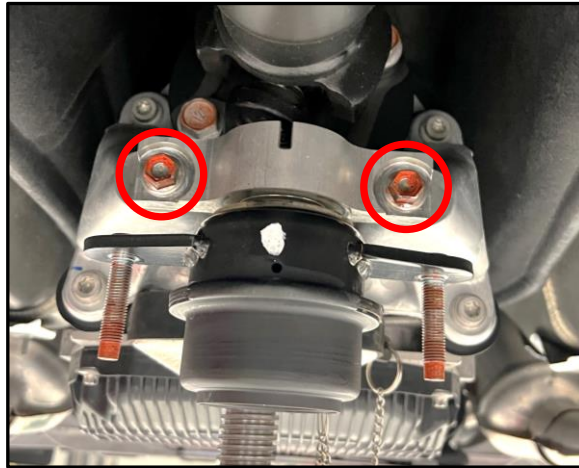
Remove contents from the Z1 Motorsports 2023+ Nissan Z Transmission Mount and verify that ALL necessary hardware is present.

PROCEDURE:

1. Place the transmission in Park position (or in Reverse gear if equipped with a manual transmission). Apply the parking brake.
2. Locate proper jacking points on vehicle's chassis (refer to vehicle's Owner Manual). Raise and support vehicle using jack & jack stands.
3. Place a jack underneath the rear of the transmission just behind the oil pan (as shown at right). DO NOT place the jack on the plastic oil pan.
4. Crack loose the (2) center nuts on the transmission crossmember that secure the transmission mount to the crossmember (circled at right). Do not remove the nuts just crack them loose.
5. Remove the (4) bolts securing the transmission crossmember to the chassis (shown at right with arrows).
6. Fully remove the (2) center nuts on the transmissions crossmember.



7. Remove the (2) bolts securing the OE transmission mount to the transmission (circled below).



8. Locate Z1 assembled transmission mount.

9. Secure top of Z1 mount to transmission using the (2) bolts removed in step # 7. Torque to 36ft-lbs.



10. Locate transmission cross member. Reattach cross member to Z1 mount using the (2) nuts removed in step #6. There is an arrow on the top of the cross member that will point to the front of the vehicle once installed.

11. Reattach cross member to chassis using the (4) bolts removed in step #5.

Note: If the outer holes on the cross member aren't lining up perfectly, try raising or lowering the jack on the transmission by a small amount. This may help line up the mounting holes and ensure the bolts do not get cross threaded.

12. Torque all nuts and bolts on cross member to 36ft-lbs.

13. Inspect vehicle for loose tools/items

14. Properly lower vehicle from jack stands.

15. Perform a final test drive of vehicle.

END

Additional Technical Support:

Contact Z1 Motorsports at info@z1motorsports.com

Or call 770-838-7777 between 9am and 6pm ET