

Z1 2023+ NISSAN Z UNDERSHROUD INSTALLATION MANUAL



This Installation Manual is intended for the following models:

2023+

Nissan Z

PROLOGUE:

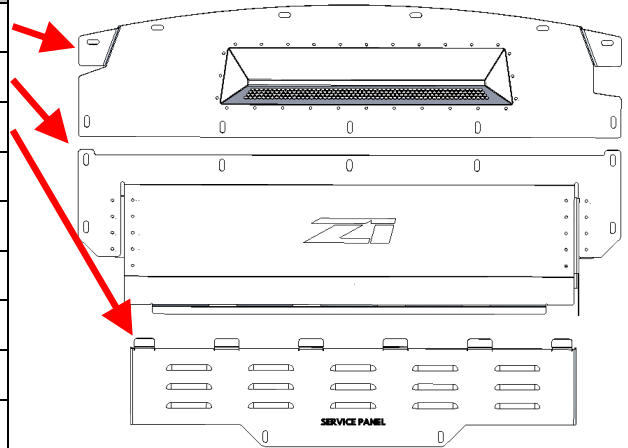
Study these instructions completely before proceeding to assembly. The installer must have a thorough knowledge of automotive systems operation. If unfamiliar with any of the concepts outlined in this instruction, we recommend the installation be completed by a qualified professional.

WARNING!

Extreme caution should be taken when performing maintenance or performance upgrades to your vehicle. Please observe and abide by any Warning or Caution labels placed on the various components and tools used when servicing your vehicle. If you have any questions regarding installation or the various components included with the Z1 Motorsports 2023+ Nissan Z Undershroud, consult with a Professional Mechanic or contact Z1 Motorsports for more information.

PARTS INCLUDED:

Item	Quantity	Description
1	1	Front Panel
2	1	Main Middle Panel
3	1	Service Panel
4	15	M6 x 25mm SEMS Screw
5	2	M6 x 35mm SEMS Screw
6	6	M6 U-Clip
7	2	Nylon Spacer
8	4	M6 Push Lock Washers
9	4	M6 Rivet Nuts
10	1	Rivet Nut Installation Tool



TOOLS REQUIRED:

- Hydraulic Jack
- (2) 2-Ton (or greater) Jack Stands
- Ratchet
- Ratchet Extension(s)
- 10mm Wrench/Socket
- 14mm Wrench
- 17mm Wrench
- 25/64" (10mm) Drill Bit

SAFETY REQUIREMENTS:

- Always wear safety glasses and any necessary protective garments. If using any fluids, chemicals, or solvents, a respirator is recommended.
- Always turn the ignition to the OFF position and disconnect the NEGATIVE battery terminal.
- Always use properly rated jack stands when working under your vehicle.
- Always keep limbs and parts away from moving drivetrain parts.
- Only operate drivetrain in safe space and well-ventilated areas.

BEFORE YOU BEGIN:

Remove contents from the Z1 Motorsports 2023+ Nissan Z Undershroud and verify that ALL necessary hardware is present.

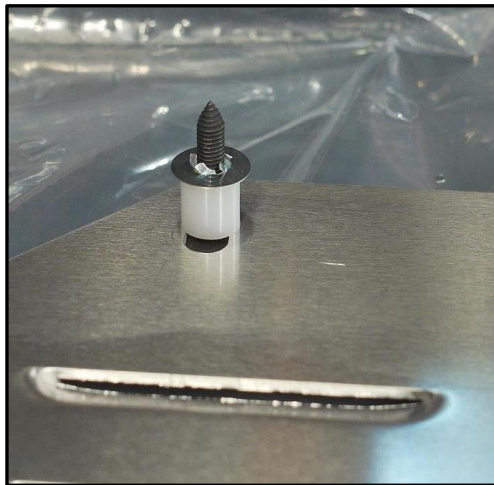
PROCEDURE:

1. Place the transmission in Park position (or in Reverse gear if equipped with a manual transmission). Apply the parking brake.
2. Locate proper jacking points on vehicle's chassis (refer to vehicle's Owner Manual). Raise and support vehicle using jack & jack stands.
3. Remove the OE plastic undershroud. The fasteners will be an assortment of bolts and plastic push clips.

4. Locate (3) holes in the aluminum support which need to be drilled (as shown).
5. Using a 10mm (or 25/64") drill bit, drill out (3) holes in the aluminum support.
6. Install (3) supplied M6 rivet nuts into each of these holes using the supplied Riv-Nut tool.

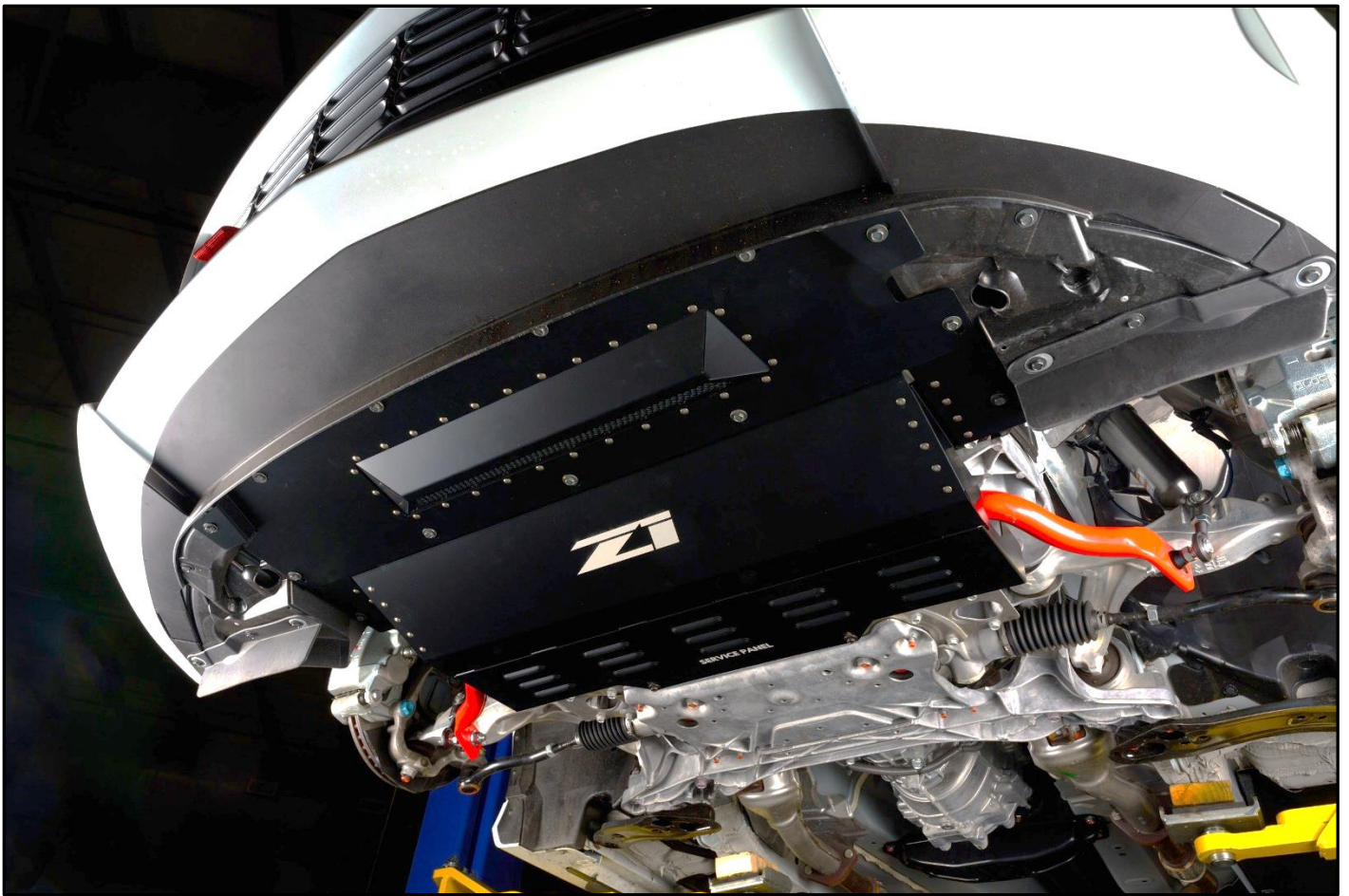


7. Locate the front panel and (6) M6 x 25mm SEMS screws.
8. Attach the front of the panel onto the bumper using (6) M6 x 25mm screws. Leave all the screws loosely threaded until each panel is installed.
9. Locate the middle panel and (5) M6 x 25mm SEMS screws. Install the middle panel in between the rear of the front panel and the rivet nuts installed in the aluminum support from step # 6. Secure with 25mm SEMS screws.
10. Locate the service panel, (2) M6 x 35mm SEMS screws, (2) nylon spacers, and (2) push lock washers.



11. Install the 35mm screws into the rear of the service panel. Place a nylon spacer over each screw, then place a push lock washer over each screw to secure them to the undershroud panel (as shown). This will keep the spacer and bolt in place during install.
12. Install the service panel by sliding the teeth of it into the corresponding slots on the middle panel, then swing the panel up and secure with the (2) rear bolts from the previous step.

13. Once all panels and screws are installed, tighten all hardware securing the undershroud to vehicle.



14. Properly lower vehicle from jack stands.

15. Inspect vehicle for loose tools/items

16. Perform a final test drive of vehicle.

END

Additional Technical Support:
Contact Z1 Motorsports at info@z1motorsports.com
Or call 770-838-7777 between 9am and 6pm ET