

# Z1 BLAST PIPE INSTALLATION MANUAL



This Installation Manual is intended for the following models:	
2003-2008	Nissan 350Z
2003-2007	Infiniti G35 (Coupe)

## PROLOGUE:

Study these instructions completely before proceeding to assembly. The installer must have a thorough knowledge of automotive systems operation. If unfamiliar with any of the concepts outlined in this instruction, we recommend the installation be completed by a qualified professional.

## WARNING!

Extreme caution should be taken when performing maintenance or performance upgrades to your vehicle. Please observe and abide by any Warning or Caution labels placed on the various components and tools used when servicing your vehicle. If you have any questions regarding installation or the various components included with the Z1 Motorsports 350Z Blast Pipe, consult with a Professional Mechanic, or contact Z1 Motorsports for more information.

## **PARTS INCLUDED:**

Item	Quantity	Description
1	1	Blast Pipe
2	1	Mid-Pipe
3	1	3" V-Band Clamp

## **TOOLS REQUIRED:**

- Hydraulic Jack
- (2) 2-Ton (or greater) Jack Stands
- Ratchet
- Ratchet Extension(s)
- Assorted Metric Wrenches
- Assorted Metric Sockets
- Torque Wrench
- Channel Lock Pliers
- Ear Plugs

## **SAFETY REQUIREMENTS:**

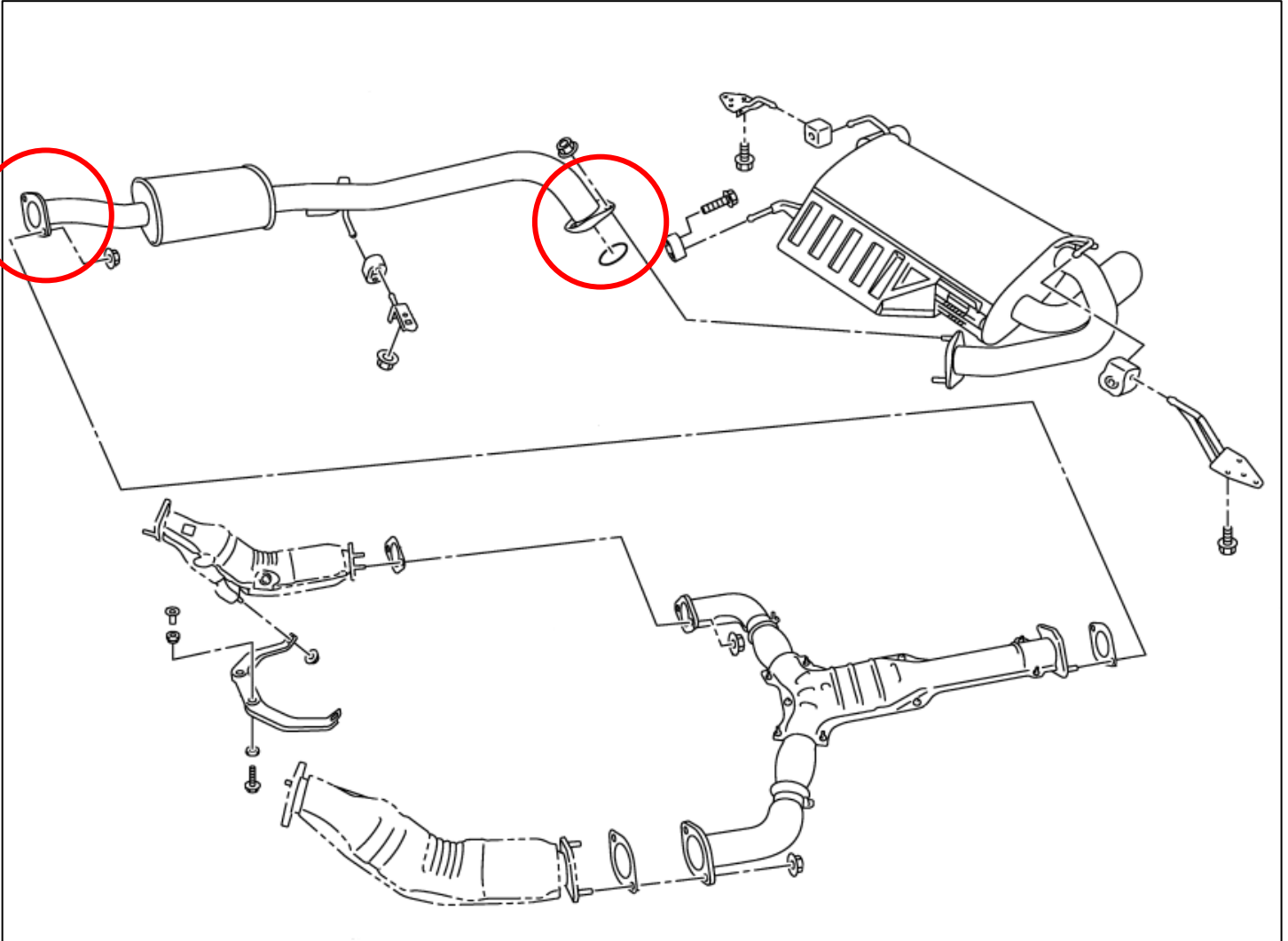
- Always wear safety glasses and any necessary protective garments. If using any fluids, chemicals, or solvents, a respirator is recommended.
- Always turn the ignition to the OFF position and disconnect the NEGATIVE battery terminal.
- Always use properly rated jack stands when working under your vehicle.
- Always keep limbs and parts away from moving drivetrain parts.
- Only operate drivetrain in safe space and well-ventilated areas.

## **BEFORE YOU BEGIN:**

Remove contents from the Z1 Motorsports 350Z Blast Pipe and verify that ALL necessary hardware is present.

## **PROCEDURE:**

1. Place the transmission in Park position (or in Reverse gear if equipped with a manual transmission). Apply the parking brake.
2. Locate proper jacking points on vehicle's chassis (refer to vehicle's Owner Manual). Raise and support vehicle using jack & jack stands.
3. Remove the (4) four bolts securing the Mid-pipe to the Y-Pipe and Rear Muffler and remove the Mid-pipe from the vehicle. Retain the Mounting Hardware and Gasket if you are not using a new Gasket. *Figure 1.*



*Figure 1*

4. Remove the Rear Muffler from the Rubber Hangers and remove from the vehicle. *Figure 2.*

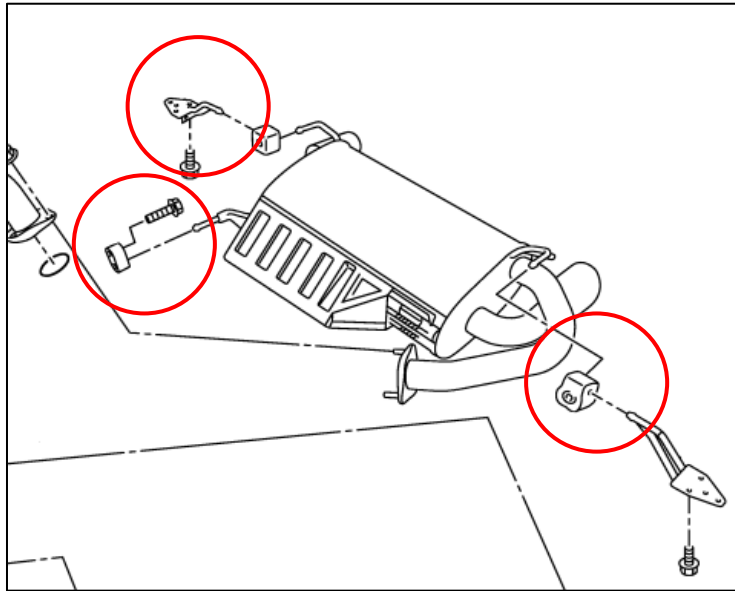


Figure 2

5. **350Z Owners:** The Rear Bumper will need a Bumper Tuck for proper fitment of the Blast Pipe.

a. Remove the (2) two tabs and clips on each side behind the Rear Bumper. *Figure 3.*

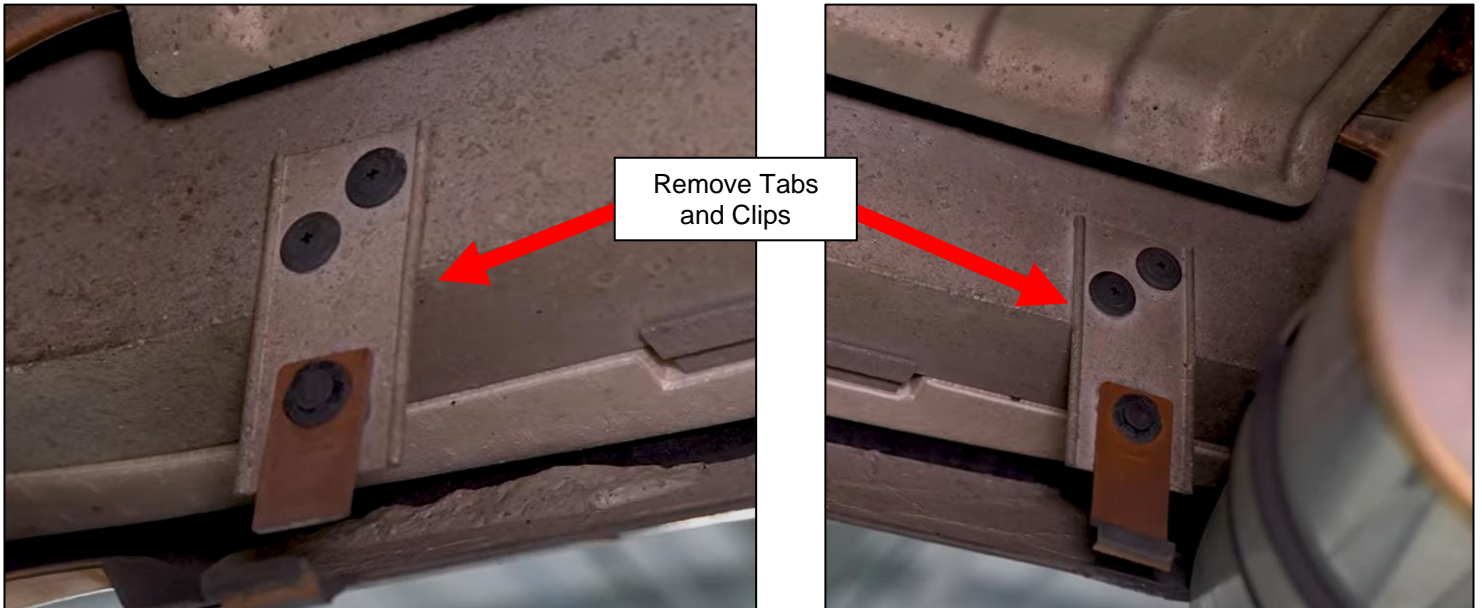


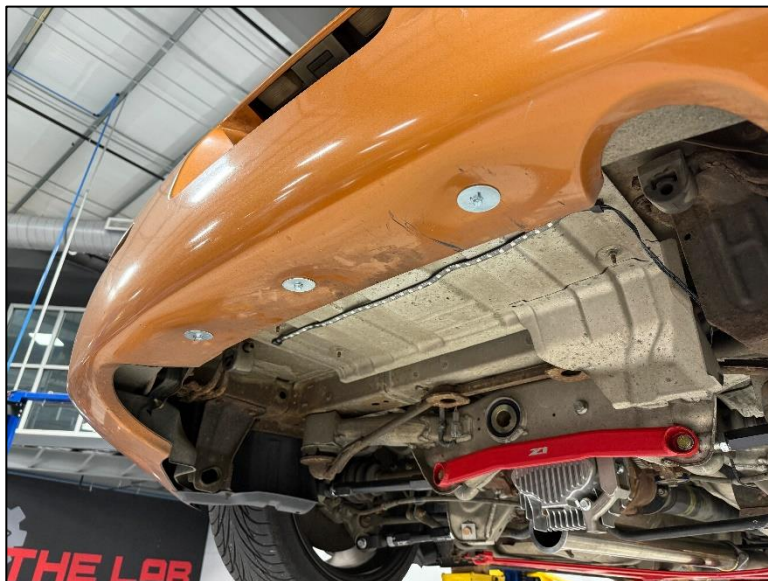
Figure 3

- b. Fold and Push the Rear Bumper up towards the Crash Bar. *Figure 4.*



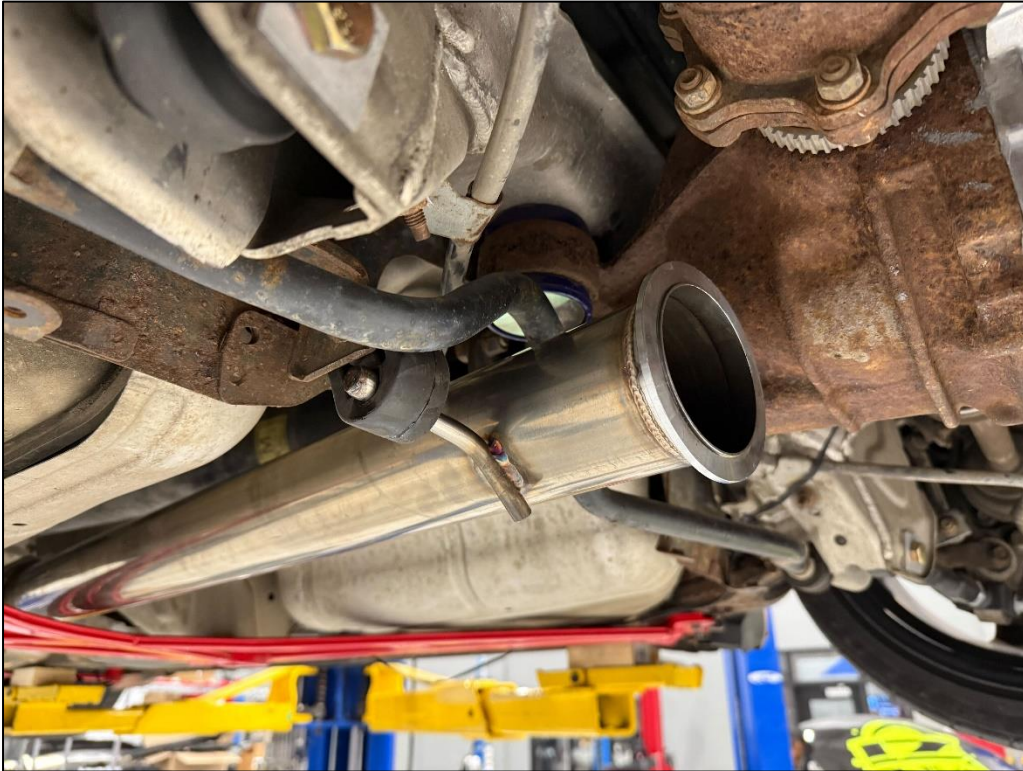
*Figure 4*

- c. Use (3) three or more Self Tapping Screws with Washers and a drill to secure the Rear Bumper to the Crash Bar. *Figure 5.*



*Figure 5*

6. **G35 Owners:** The Rear Bumper will need to be trimmed to for proper fitment of the Blast Pipe. This guide will be updated soon to show how to properly trim the Rear Bumper.
7. Locate the Mid-Pipe. Position it in the Exhaust Hanger and secure it to the Y-Pipe with the Hardware and Gasket removed in *Step 3*. Torque the Bolts to **38-47 ft-lbs.** *Figure 6.*



*Figure 6*

8. Locate the Blast Pipe. Position it in the Rear Exhaust Hanger on the Driver side of the vehicle. *Figure 7.*



*Figure 7*

9. Locate the V-Band Clamp. Mate the end of the Blast Pipe with the Mid-Pipe and secure with the V-Band Clamp. *Figure 8.*



*Figure 8*

10. Wipe down the exhaust system to clean any oil and debris before start up.

11. Find Ear Protection and start the vehicle.

**END**

**Additional Technical Support:**

Contact Z1 Motorsports at [info@z1motorsports.com](mailto:info@z1motorsports.com)

Or call 770-838-7777 between 9am and 6pm ET