

Z1 FRONT BRAKE COOLING KIT INSTALLATION MANUAL



This Installation Manual is intended for the following models:

2003-2008	Nissan 350Z
2003-2007	G35 Coupe
2003-2006	G35 Sedan

PROLOGUE:

Study these instructions completely before proceeding to assembly. The installer must have a thorough knowledge of automotive systems operation. If unfamiliar with any of the concepts outlined in this instruction, we recommend the installation be completed by a qualified professional.

WARNING!

Extreme caution should be taken when performing maintenance or performance upgrades to your vehicle. Please observe and abide by any Warning or Caution labels placed on the various components and tools used when servicing your vehicle. If you have any questions regarding installation or the various components included with the Z1 Motorsports 350Z Front Brake Cooling Kit, consult with a Professional Mechanic or contact Z1 Motorsports for more information.

PARTS INCLUDED:

Item	Quantity	Description
1	1	350Z Backing Plate - Driver
2	1	350Z Backing Plate - Passenger
3	2	2.5" Flexible Duct Hose – 8'
4	4	Clamps
5	2	Reusable Tie Strap – 14"
6	2	Optional: NACA Duct

TOOLS REQUIRED:

- Hydraulic Jack
- (2) 2-Ton (or greater) Jack Stands
- Ratchet
- Torque Wrench
- Assorted Metric Sockets/Wrenches
- Breaker Bar
- 8mm Socket/ Wrench

SAFETY REQUIREMENTS:

- Always wear safety glasses and any necessary protective garments. If using any fluids, chemicals, or solvents, a respirator is recommended.
- Always turn the ignition to the OFF position and disconnect the NEGATIVE (-) battery terminal.
- Always use properly rated jack stands when working under your vehicle.
- Always keep limbs and parts away from moving drivetrain parts.
- Only operate drivetrain in a safe space and well-ventilated area.

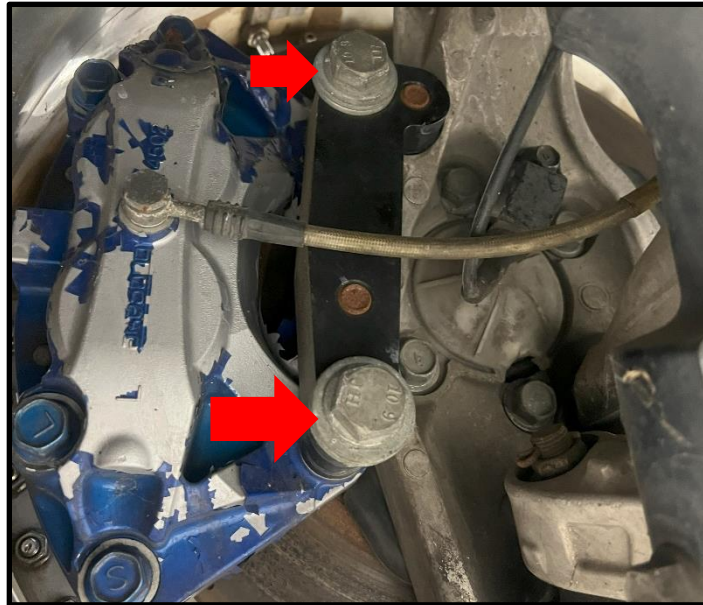
BEFORE YOU BEGIN:

Remove contents from the Z1 Motorsports 370Z Front Brake Cooling Kit and verify that ALL necessary hardware is present.

PROCEDURE:

1. Assure the car's engine is turned OFF and place transmission in park position (or in reverse gear if equipped with a manual transmission). Apply the parking brake.
2. Release tension to lug nuts at front wheels. DO NOT remove lug nuts!
3. Locate proper jacking points on vehicle's chassis (refer to vehicle's Owner Manual). Raise and support front of vehicle using jack & jack stands.
4. Remove front wheel lug nuts and wheel.
5. Remove front inner fender liner.

6. Remove (2) bolts securing the brake caliper onto the knuckle arm.

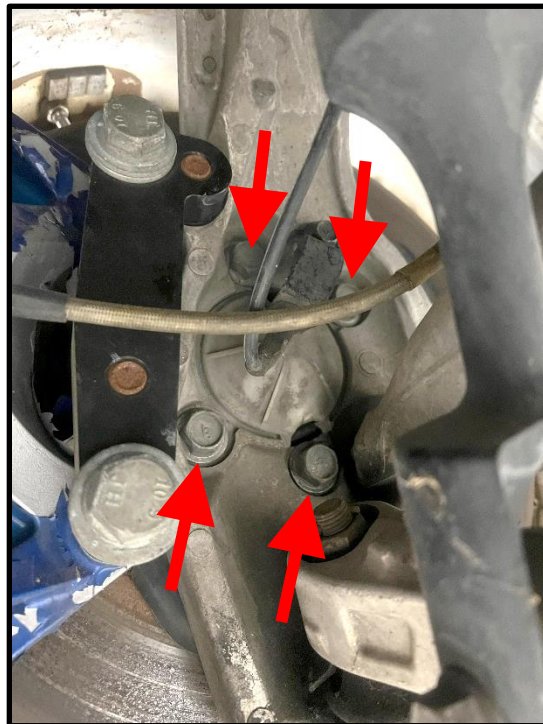


7. Slide the brake caliper off the brake rotor and secure it with zip ties or wire so there is no tension on the brake line.

8. Remove brake rotor.

Note: A dead blow may be necessary to loosen the rotor from the wheel hub.

9. Remove (4) bolts securing the wheel hub to the knuckle arm.



10. Remove wheel hub.

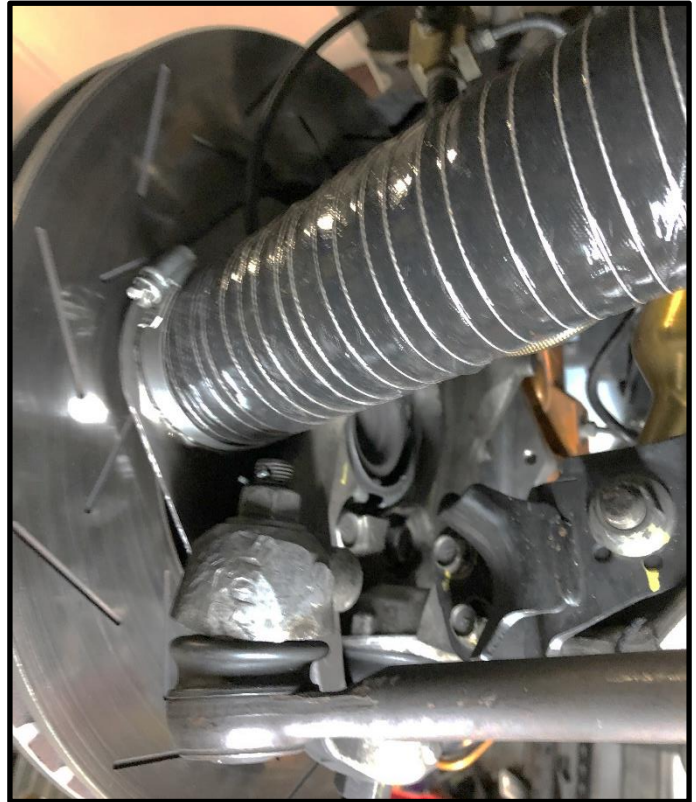
Note: A dead blow may be necessary to loosen wheel hub from the knuckle arm.

11. Place the 17mm bolts back in the knuckle arm and position the backing plate onto the wheel knuckle.

Note: The duct for the backing plate should be on the opposite side of brake caliper (towards the rear of the car)

12. Reattach the wheel hub to the knuckle arm, torque to 65ft-lbs.

13. Attach the 2.5" hose to the backing plate and secure it with the provided clamp.



14. Route the brake ducting around the suspension components and to your ducts. Ensure the hose remains attached and does not bind up when wheels are fully turned in either direction. It is recommended to use zip ties to secure it in place.

15. Place the brake rotor back onto the wheel hub.

16. Position the brake caliper back on the rotor and reinstall the bolts removed in step # 6, torque to 113ft-lbs.

17. Reattach the wheel and lug nuts.

18. Repeat steps 4-17 on the opposite side of the vehicle.

19. Lower vehicle from jack stands.

20. Torque lug nuts to 80ft-lbs.

21. Assure all bolts are torqued properly and inspect wheel for loose components or issues.

END

Additional Technical Support:
Contact Z1 Motorsports at info@z1motorsports.com
Or call 770 838 7777 between 9am and 6pm ET