

Z1 350Z / G35 DIFFERENTIAL BRACE INSTALLATION MANUAL



This Installation Manual is intended for the following models:

2003-2008	Nissan 350Z
2003-2006	Infiniti G35 Sedan
2003-2007	Infiniti G35 Coupe

PROLOGUE:

Study these instructions completely before proceeding to assembly. The installer must have a thorough knowledge of automotive systems operation. If unfamiliar with any of the concepts outlined in this instruction, we recommend the installation be completed by a qualified professional.

WARNING!

Extreme caution should be taken when performing maintenance or performance upgrades to your vehicle. Please observe and abide by any Warning or Caution labels placed on the various components and tools used when servicing your vehicle. If you have any questions regarding installation or the various components included with the Z1 Motorsports 350Z Differential Brace, consult with a Professional Mechanic or contact Z1 Motorsports for more information.

PARTS INCLUDED:

Item	Quantity	Description
1	1	Z1 350Z Differential Brace
2	1	Custom Bolt
3	1	M10 x 35mm Bolt
4	1	M10 x 80mm Bolt

TOOLS REQUIRED:

- Hydraulic Jack
- (2) 2-Ton (or greater) Jack Stands
- Ratchet
- Ratchet Extension(s)
- 14mm Socket/Wrench
- 15mm Socket/Wrench
- 17mm Socket/Wrench
- Torque Wrench

SAFETY REQUIREMENTS:

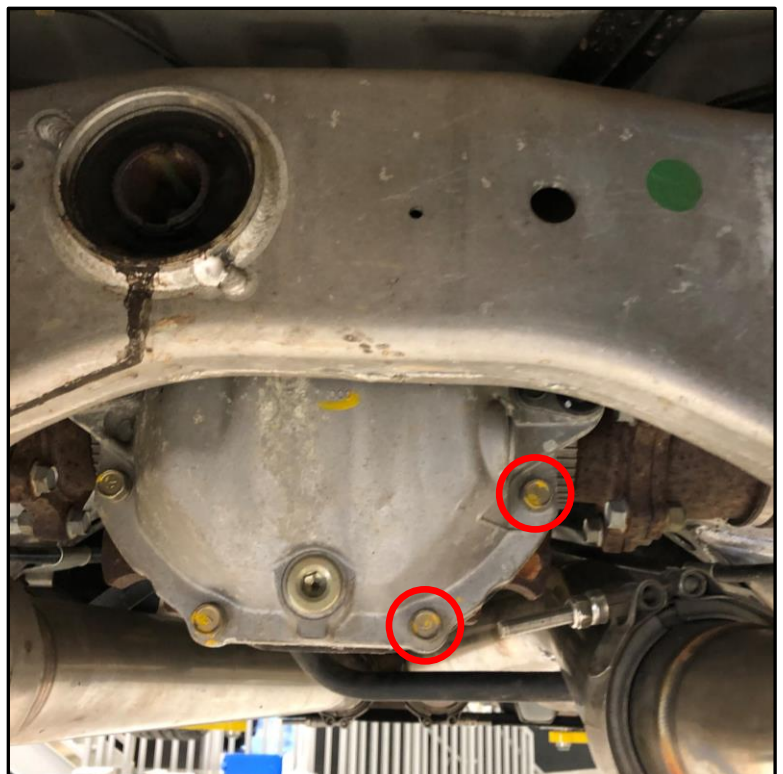
- Always wear safety glasses and any necessary protective garments. If using any fluids, chemicals, or solvents, a respirator is recommended.
- Always turn the ignition to the OFF position and disconnect the NEGATIVE battery terminal.
- Always use properly rated jack stands when working under your vehicle.
- Always keep limbs and parts away from moving drivetrain parts.
- Only operate drivetrain in safe space and well-ventilated areas.

BEFORE YOU BEGIN:

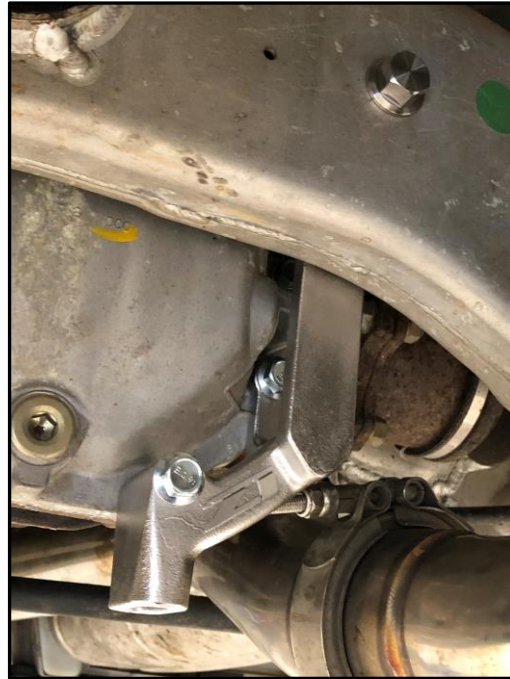
Remove contents from the Z1 Motorsports 350Z Differential Brace and verify that ALL necessary hardware is present.

PROCEDURE:

1. Place the transmission in Park position (or in Reverse gear if equipped with a manual transmission). Apply the parking brake.
2. Locate proper jacking points on vehicle's chassis (refer to vehicle's Owner Manual). Raise and support vehicle using jack & jack stands.
3. Remove the (2) bolts on the bottom right of the rear differential cover (circled at right).
4. Locate the Z1 350Z Differential Brace and all supplied hardware.



5. Position differential brace between differential and rear subframe (as shown below).
6. Loosely secure the top of the brace to the rear subframe with the supplied customer bolt (as shown below).
7. Loosely secure the bottom of the brace to the differential housing with the (2) supplied M10 bolts, with the longer bolt into the bottom mounting hole and shorter bolt in the middle (as shown below).



- a. You may need to slightly raise the differential with a jack to align the holes as a worn or blown differential bushing causes the differential to sag over time.
- b. Due to variances in subframes, the flange head of the bolt may not sit flush against the back of the subframe once tightened down but should sit flush on the inside (as shown below).



8. Once all bolts are in place, torque the (2) bolts going into the differential to 32ft-lbs. Torque the bolt going through the subframe into the brace to 87ft-lbs.
9. Assure all bolts are properly torqued and inspect vehicle for loose components or issues.
10. Lower vehicle from jack stands.
11. Perform a final test drive of vehicle.

END

Additional Technical Support:

Contact Z1 Motorsports at info@z1motorsports.com
Or call 770-838-7777 between 9am and 6pm ET