

Z1 350Z AND G35 FRONT BASH BAR INSTALLATION MANUAL



This Installation Manual is intended for the following models:

2003-2008	Nissan 350Z
2003-2006	Infiniti G35 Sedan
2003-2007	Infiniti G35 Coupe

PROLOGUE:

Study these instructions completely before proceeding to assembly. The installer must have a thorough knowledge of automotive systems operation, safety, and sound maintenance practices. If unfamiliar with any of the concepts outlined in this instruction, we recommend the installation be completed by a qualified professional.

WARNING!

Extreme caution should be taken when performing maintenance or performance upgrades to your vehicle. Please observe and abide by any Warning or Caution labels placed on the various components and tools used when servicing your vehicle. If you have any questions regarding installation or the various components included with the Z1 Motorsports 350Z and G35 Front Bash Bar, consult with a Professional Mechanic, or contact Z1 Motorsports for more information.

PARTS INCLUDED:

Item	Quantity	Description
1	1	Z1 350Z / G35 Bash Bar

TOOLS REQUIRED:

- (2) 2-Ton Jackstands
- Floor Jack
- (2) Wheel Chocks
- Ratchet w/ Extensions
- 10 and 12mm Sockets/Combo Wrenches
- Small Flat Head Screwdriver
- Clip Removal Tool (Plastic)
- Zip Lock Bags (secure loose hardware)
- Torque Wrench

SAFETY REQUIREMENTS:

- Always wear safety glasses and any necessary protective garments. If using any fluids, chemicals, or solvents, a respirator is recommended.
- Always turn the ignition to the OFF position and disconnect/secure the **NEGATIVE** battery terminal.
- Always use properly rated jack stands when working under your vehicle.
- Always keep limbs and parts away from moving drivetrain parts.
- Only operate drivetrain in safe space and well-ventilated areas.

BEFORE YOU BEGIN:

Remove contents from the Z1 Motorsports 350Z and G35 Bash Bar and verify that **ALL** necessary hardware is present.

PROCEDURE:

1. Place the transmission in Park position (or in Reverse gear if equipped with a manual transmission). Apply the parking brake.
2. Locate proper jacking points on vehicle's chassis (refer to vehicle's Owner Manual). Raise and support vehicle using jack & jack stands.
3. Unlatch and support the Vehicle's hood.
4. Remove the Lower Engine Splash Shield (Undershroud) and set aside. Fasteners will be an assortment of 10mm screws and plastic panel clips. Use a flat blade screwdriver or trim removal tool to gently pry out the pop clips.
5. Remove plastic clips and remove the front wheel/fender liners to reveal mounting screw at each side of vehicle which mounts corner of bumper fascia to the vehicle. Remove the mounting screw on each side. *Figure 1.*

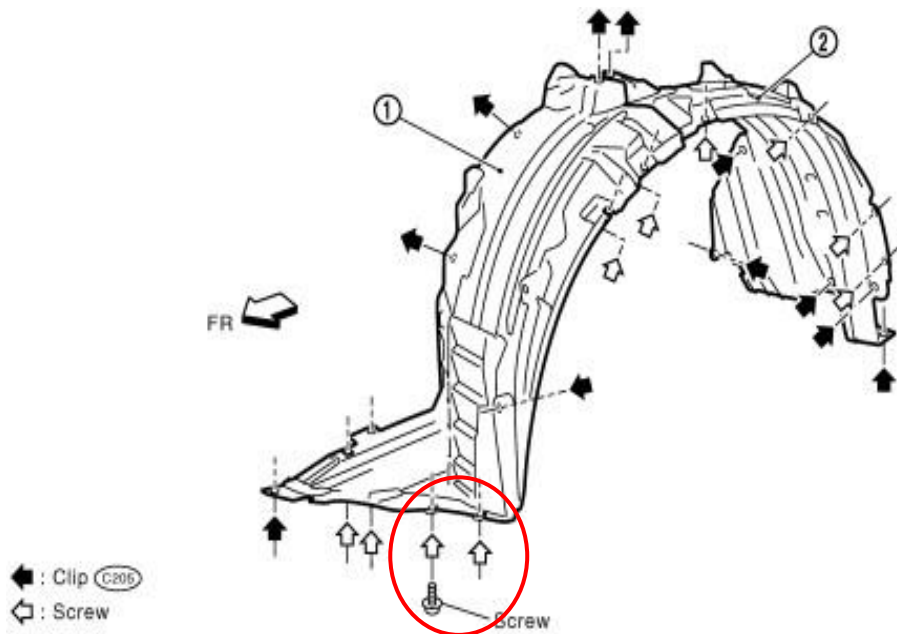
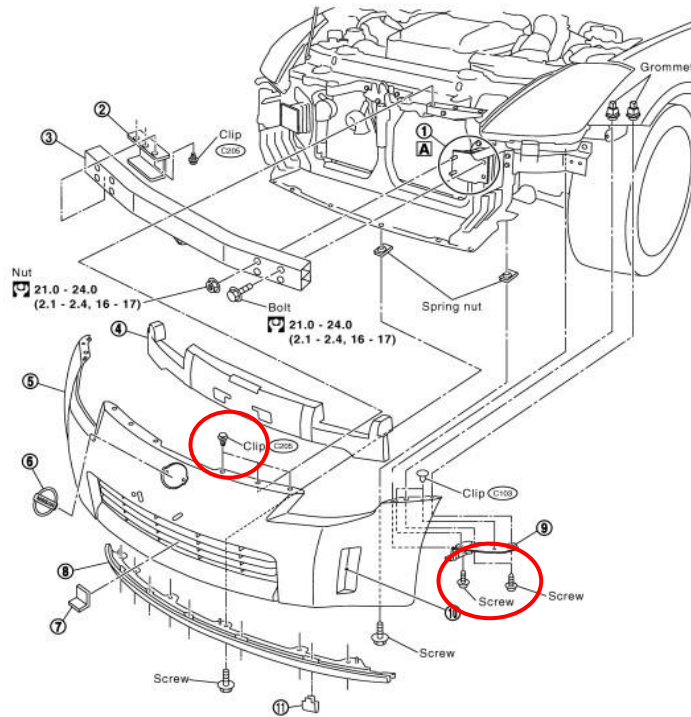


Figure 1

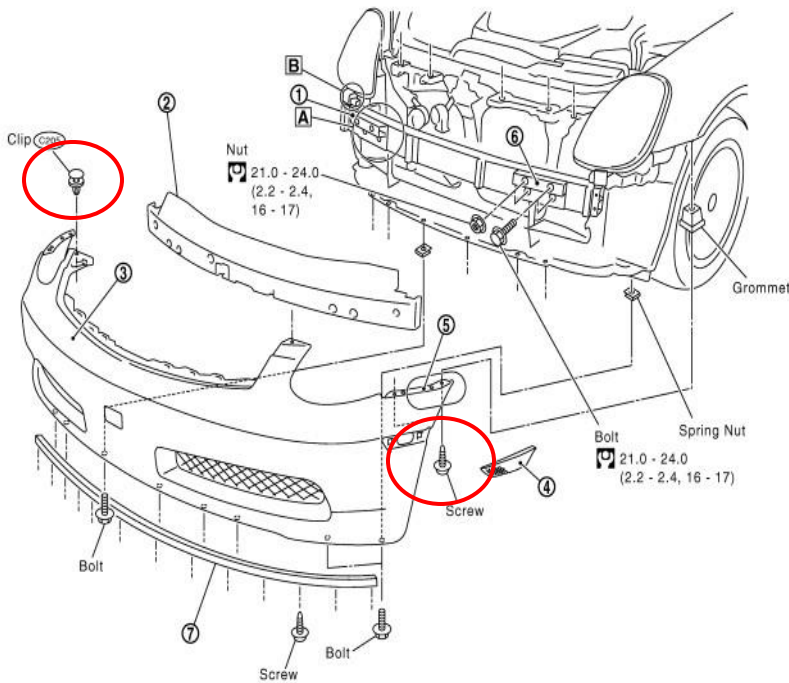
6. **G35 MODELS:** Disconnect front bumper side marker harnesses.

NOTE: Refer to diagrams below for locations of bumper mounting hardware and core support clips for applicable models.

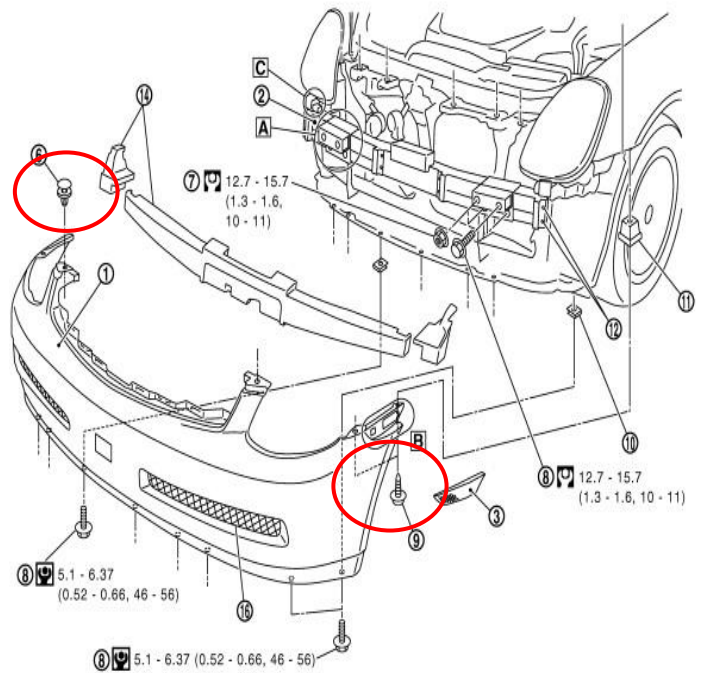
350Z



G35 Coupe



G35 Sedan



7. Remove plastic pop clips securing the upper Bumper Fascia to vehicle at Radiator Core Support, see Diagram on *Page 4*.
8. With a light pull motion, carefully disengage Bumper Fascia from clips on vehicle just below each headlight. Remove Bumper Fascia and set aside.
9. Remove and dispose of the Foam Impact Absorber in front of the Crash Bar.
10. Using a 12mm socket and ratchet with a 2" extension, remove the (8) eight pieces of hardware ((4) four nuts, (4) four bolts) securing the Front Crash Bar to the chassis and retain the hardware as it will be reused.
11. Remove and dispose of crash bar.
12. Locate Z1 Bash Bar and install it onto the OE Crash Bar Location. Secure the Bash Bar by using the (8) eight pieces of OE hardware removed in *Step 10*.
13. Torque the Nuts and Bolts from *Step 12* to 17 ft-lbs.

NOTE: For the hardware circled below, we recommend using a 12mm combo wrench. *Figure 2.*

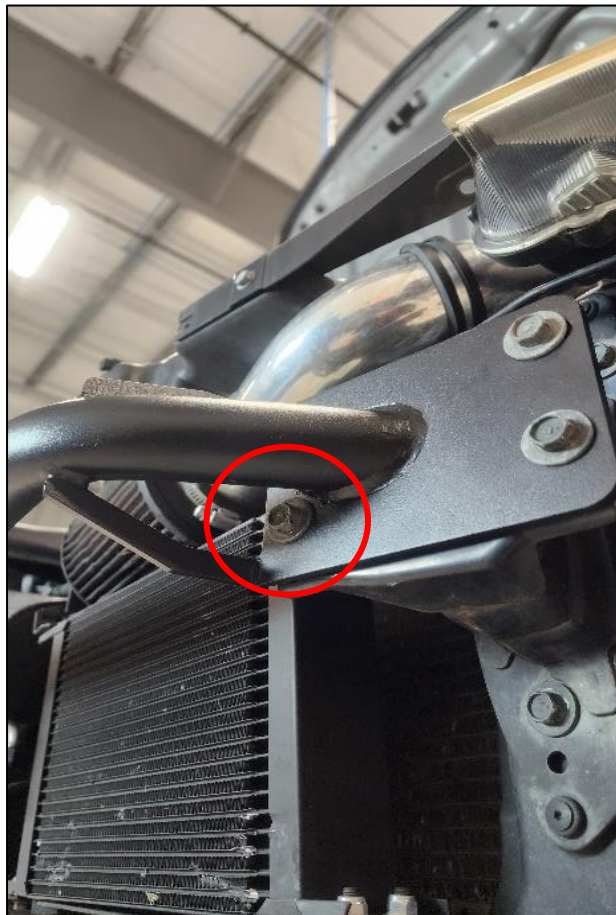


Figure 2

14. If applicable, install tow hook per manufacturer's instructions. *Figure 3.*

NOTE: The Z1 Bash Bar only accepts 22mm thread diameter tow hooks.

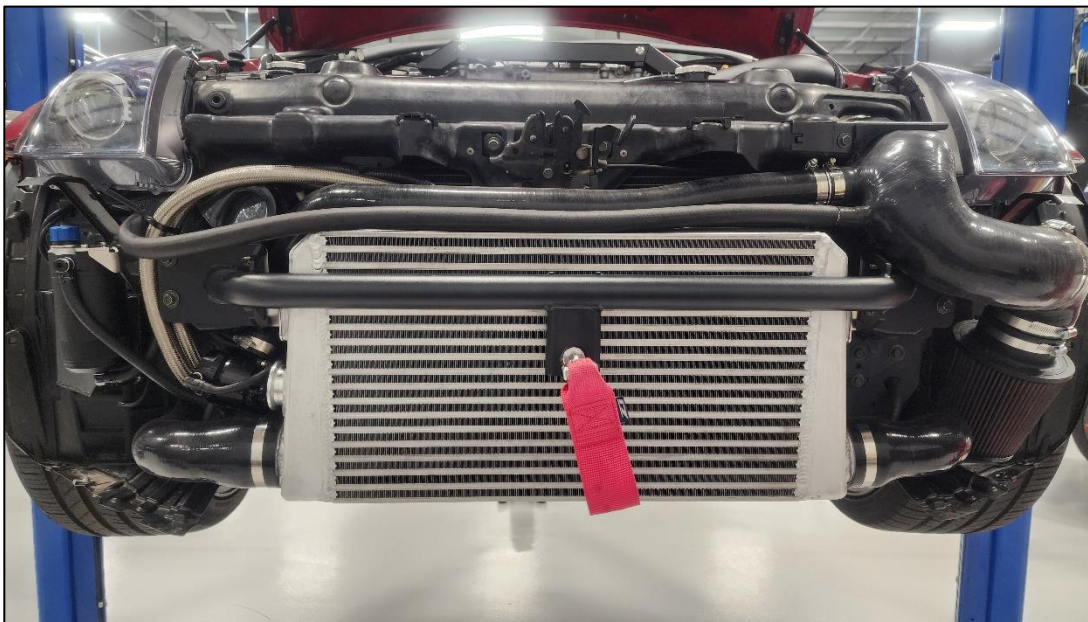


Figure 3

15. Reinstall Bumper and Undershroud by following *Steps 4-8* in reverse order.

16. Check vehicle for loose tools/components.

17. Lower vehicle from jack and jackstands.

18. Take vehicle for a test drive.

END

Additional Technical Support:
Contact Z1 Motorsports at info@z1motorsports.com
Or call 770-838-7777 between 9am and 6pm ET