

Z1 CHASSIS BRACING W-BRACE, 350Z AND G35 COUPE INSTALLATION MANUAL



This Installation Manual is intended for the following models:

2003-2008	Nissan 350Z
2003-2007	Infiniti G35 Coupe

PROLOGUE:

Study these instructions completely before proceeding to assembly. The installer must have a thorough knowledge of automotive systems operation. If unfamiliar with any of the concepts outlined in this instruction, we recommend the installation be completed by a qualified professional.

WARNING!

Extreme caution should be taken when performing maintenance or performance upgrades to your vehicle. Please observe and abide by any Warning or Caution labels placed on the various components and tools used when servicing your vehicle. If you have any questions regarding installation or the various components included with the Z1 Motorsports Chassis Bracing W-Brace, 350Z and G35 Coupe, consult with a Professional Mechanic or contact Z1 Motorsports for more information.

Item	Quantity	Description
1	1	Z1 Motorsports W-Brace
2	4	M10 x 1.25 Flanged Bolt, 25mm
3	6	M8 x 1.25 Flanged Bolt, 25mm

TOOLS REQUIRED:

- Hydraulic Jack
- (2) 2-Ton (or greater) Jack Stands
- Ratchet
- Ratchet Extension(s)
- Assorted Metric Wrenches
- Assorted Metric Sockets
- Torque Wrench

SAFETY REQUIREMENTS:

- Always wear safety glasses and any necessary protective garments. If using any fluids, chemicals, or solvents, a respirator is recommended.
- Always turn the ignition to the OFF position and disconnect the NEGATIVE battery terminal.
- Always use properly rated jack stands when working under your vehicle.
- Always keep limbs and parts away from moving drivetrain parts.
- Only operate drivetrain in safe space and well-ventilated areas.

BEFORE YOU BEGIN:

Remove contents from the Z1 Motorsports Chassis Bracing W-Brace, 350Z and G35 Coupe, and verify that ALL necessary hardware is present.

PROCEDURE:

1. Place the transmission in Park position (or in Reverse gear if equipped with a manual transmission). Apply the parking brake.
2. Locate proper jacking points on vehicle's chassis (refer to vehicle's Owner Manual). Raise and support vehicle using jack & jack stands.
3. Remove the (10) ten bolts connecting the factory W-Brace, see *Figure 1* below.

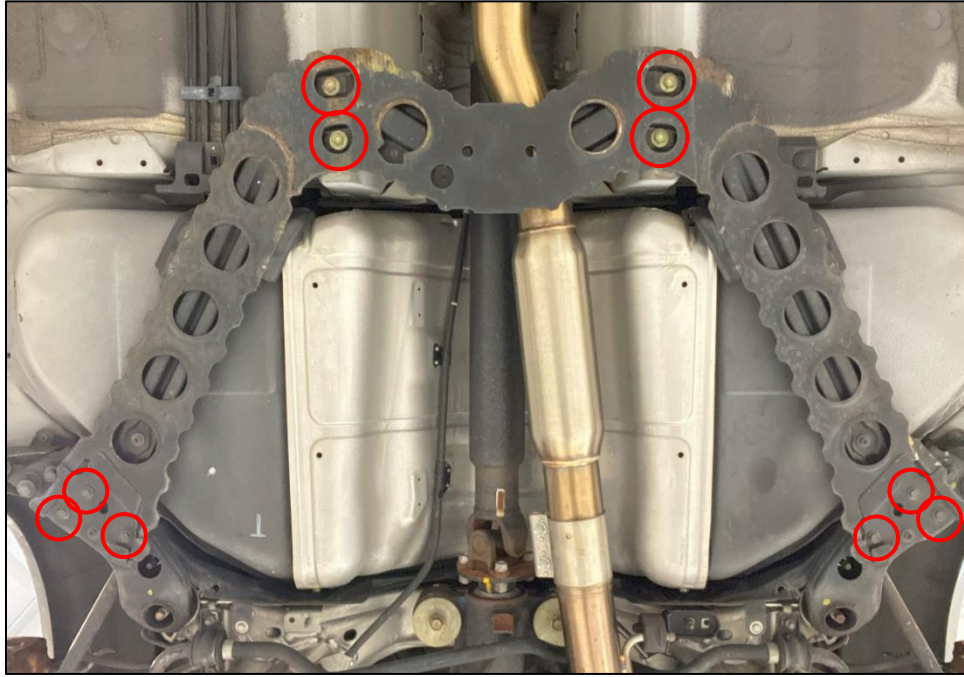


Figure 1

4. Position the Z1 Motorsports W-Brace in position and loosely install the (4) four M10 x 1.25 Bolts. *Figure 2*.

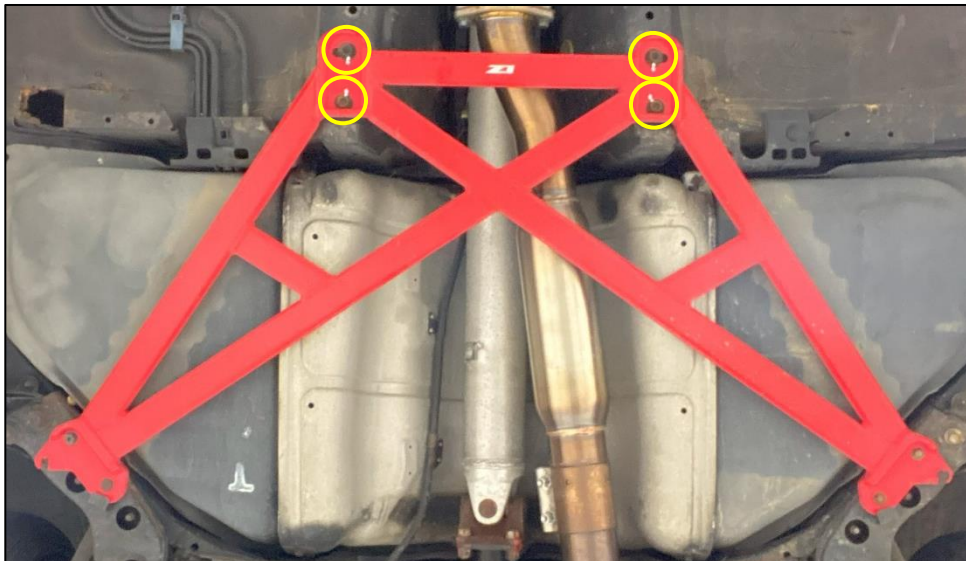


Figure 2

- Loosely install the (6) six M8 x 1.25 Bolts. *Figure 3.*

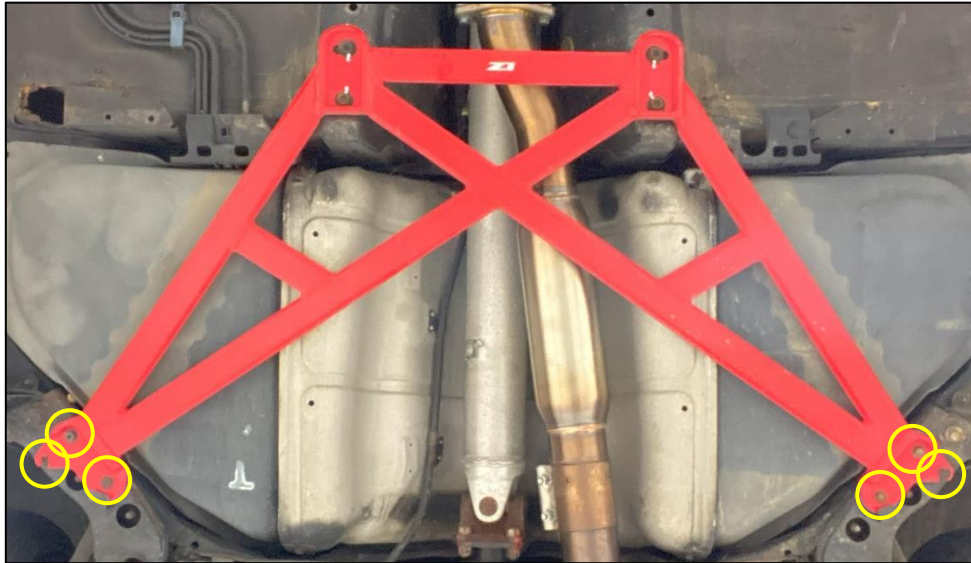


Figure 3

- Torque the (4) four M10 x 1.25 bolts towards the front of the car to **33 ft-lbs.**
- Torque the (6) six M8 x 1.25 bolts towards the back of the car to **18 ft-lbs.**
- Safely lower the vehicle off of jack stands.
- Take the vehicle for a final test drive.

END

Additional Technical Support:
Contact Z1 Motorsports at info@z1motorsports.com
Or call 770-838-7777 between 9am and 6pm ET