

Z1 370Z ABS FRONT LIP INSTALLATION MANUAL



This Installation Manual is intended for the following models:

2009-2012

Nissan 370Z (Non-NISMO)

PROLOGUE:

Study these instructions completely before proceeding to assembly. The installer must have a thorough knowledge of automotive systems operation. If unfamiliar with any of the concepts outlined in this instruction, we recommend the installation be completed by a qualified professional.

WARNING!

Extreme caution should be taken when performing maintenance or performance upgrades to your vehicle. Please observe and abide by any Warning or Caution labels placed on the various components and tools used when servicing your vehicle. If you have any questions regarding installation or the various components included with the Z1 Motorsports 370Z ABS Front Lip, consult with a Professional Mechanic, or contact Z1 Motorsports for more information.

PARTS INCLUDED:

Item	Quantity	Description
1	1	Front Lip
2	6	Self-Tapping Screws
3	2	Riv-Nut
4	2	M6 x 1.0 Flanged Bolt, 16mm
5	1	Riv-Nut Tool

TOOLS REQUIRED:

- Hydraulic Jack
- (2) 2-Ton (or greater) Jack Stands
- Electric Ratchet
- Ratchet Extension(s)
- Assorted Metric Sockets
- Pliers
- Rags
- Detailing Spray
- Rubbing Alcohol
- Marker
- Drill
- 3/8" Drill Bit

SAFETY REQUIREMENTS:

- Always wear safety glasses and any necessary protective garments. If using any fluids, chemicals, or solvents, a respirator is recommended.
- Always turn the ignition to the OFF position and disconnect the NEGATIVE battery terminal.
- Always use properly rated jack stands when working under your vehicle.
- Always keep limbs and parts away from moving drivetrain parts.
- Only operate drivetrain in safe space and well-ventilated areas.

BEFORE YOU BEGIN:

Remove contents from the Z1 Motorsports 370Z ABS Front Lip and verify that ALL necessary hardware is present.

PROCEDURE:

1. Place the transmission in Park position (or in Reverse gear if equipped with a manual transmission). Apply the parking brake.
2. Locate proper jacking points on vehicle's chassis (refer to vehicle's Owner Manual). Raise and support vehicle using jack & jack stands.
3. Remove the (2) two bolts, (1) one on each side on the bottom of the Front Bumper. Retain these bolts.
Figure 1.



Figure 1

4. Remove the OE Plastic Bumper Trim, it is held on by plastic rivets. Pull the rivets out with pliers and discard the plastic trim. *Figure 2.*



Figure 2

5. Use Detailing Spray and a rag, clean any debris from the mounting surface of the Front Lip. *Figure 3.*



Figure 3

6. Use Rubbing Alcohol and remove any residue from the Front Bumper.

7. Using the (2) two bolts removed in *Step 3*, loosely secure the Front Lip to the Front Bumper as shown below. *Figure 4.*



Figure 4

8. Hold the Front Lip up to the vehicle as if it were mounted and mark the (2) two holes in the middle of the Front Lip with a marker. *Figure 5.*

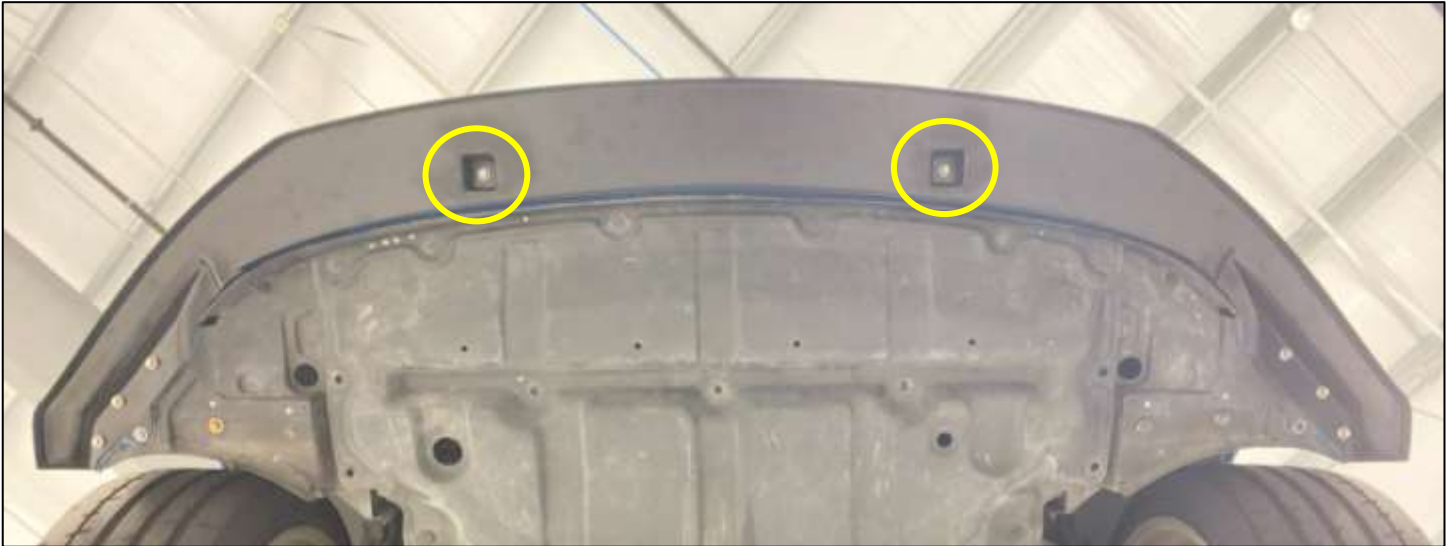


Figure 5

9. Remove the (2) two OE Bolts and set the Front Lip aside.
10. Using a 3/8" Drill Bit, drill into the marks made in *Step 8.*
11. Locate the Riv-Nut tool and (2) two Riv-nuts. Install the Riv-nuts into the holes drilled in *Step 10.* *Figure 6.*

NOTE: The image below is of a Nissan Z Front Bumper, but the process is the same.



Figure 6

12. Remove the plastic protective covering from the Front Lip.

13. Slightly pull up the cover from the double-sided tape on the Front Lip. *Figure 7.*



Figure 7

14. Using the (2) two bolts removed in *Step 3*, loosely secure the Front Lip to the Front Bumper as shown below. *Figure 8*.



Figure 8

15. Pull the rest of the double-sided tape cover up.
16. Tighten the (2) two OEM Bolts and push the rest of the Front Lip up to adhere the tape to the Front Bumper. *Figure 9*.



Figure 9

17. Locate the (6) six Self-tapping screws and the (2) two M6 Flanged Bolts. Using an electric ratchet or impact driver, insert (1) one self-tapping screw into each hole in the corner of the Front Lip as shown below. The Center will be secured with the (2) two M6 Flanged Nuts and the Riv-nuts. *Figure 10.*

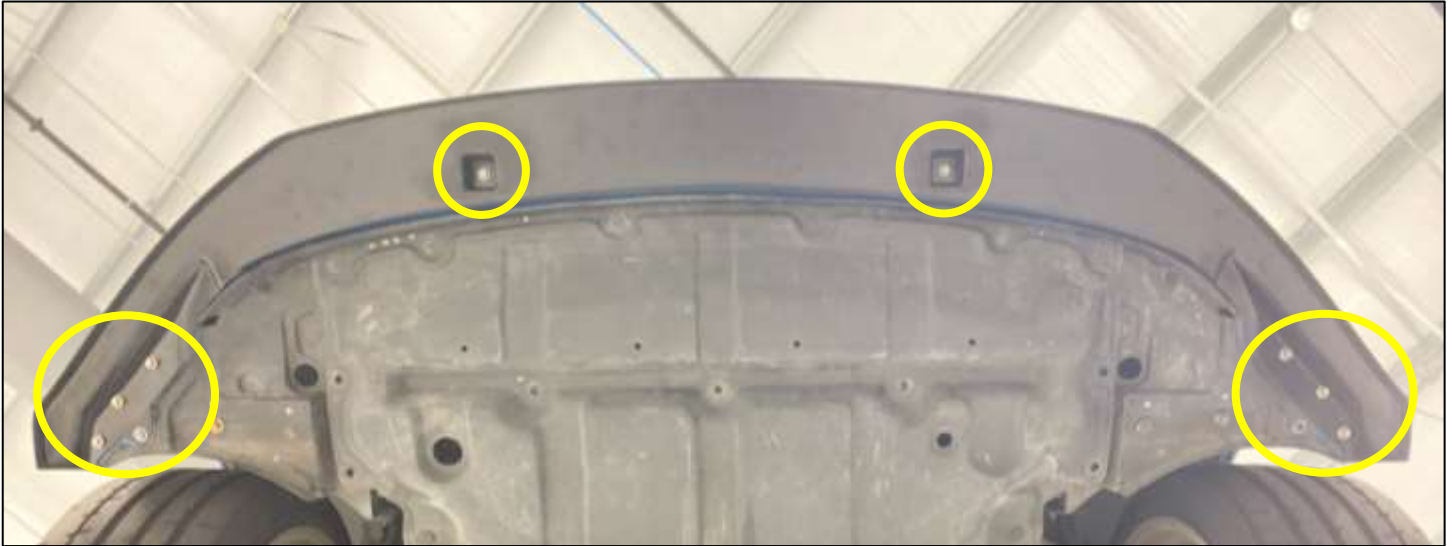


Figure 10

END

Additional Technical Support:
Contact Z1 Motorsports at info@z1motorsports.com
Or call 770-838-7777 between 9am and 6pm ET