

Z1 370Z / G37 3" INTAKE KIT INSTALLATION MANUAL



This Installation Manual is intended for the following models:

2009-2020	Nissan 370Z
2008-2013	Infiniti G37
2014-2016	Infiniti Q60
2015	Infiniti Q40

NOTICE:

The following kit has been developed and tested with US Model 370Zs. Repositioning, modification, and/or removal of front-end components may be required when used on a Nismo Edition Model 370Z or other models.

PROLOGUE:

Study these instructions completely before proceeding to assemble. The installer must have a thorough knowledge of automotive systems operation. If unfamiliar with any of the concepts outlined in this instruction, we recommend the installation be completed by a qualified professional.

WARNING!

Extreme caution should be taken when performing maintenance or performance upgrades to your Vehicle. Please observe and abide by any Warning or Caution labels placed on the various components and tools used when servicing your Vehicle. If you have any questions regarding installation or the various components included with the Z1 Motorsports 370Z / G37 3" Intake Kit, consult with a Professional Mechanic or contact Z1 Motorsports for more information.

PARTS INCLUDED:

Item	Quantity	Description
1	2	Z1 3" Intake – Passenger Side
2	1	Z1 3" Intake – Driver Side
3	1	3" Intake Silicone Hose – Driver Side
4	1	3" Intake Silicone Hose – Passenger Side
5	1	3" Post-MAF Silicone Hose (with PCV barb) – Driver Side
6	1	3" Post-MAF Silicone Hose (with PCV barb) – Passenger Side
7	1	PCV Breather Hose – Driver Side
8	1	PCV Breather Hose – Passenger Side
9	2	Z1 3" Air Filter
10	2	3" Air Filter Joiner
11	8	Large HD Hose Clamp, 2-13/16" – 3-3/4"
12	2	Medium HD Hose Clamp, 2-1/3" – 3-1/4"
13	6	Small Constant Tension Clamps
14	2	Bolt, M6-1.0 x 10mm

TOOLS REQUIRED:

- Hydraulic Jack
- (2) 2-Ton (or greater) Jack Stands
- 8mm Nut Driver
- Assorted Metric Wrenches (10mm-19mm)
- Assorted Metric Sockets (10mm-19mm)
- Ratchet
- Ratchet Extension(s)
- Silicone Spray
- Pliers
- Flat-head Screwdriver
- Body Saw or Dremel

SAFETY REQUIREMENTS:

- Always wear safety glasses and any necessary protective garments. If using any fluids, chemicals, or solvents, a respirator is recommended.
- Always use properly rated jack stands when working under your vehicle.
- Always keep limbs and parts away from moving drivetrain parts.
- Only operate drivetrain in safe space and well-ventilated areas.

BEFORE YOU BEGIN:

Remove contents from the Z1 Motorsports 370Z / G37 3" Intake Kit and verify that ALL necessary hardware is present.

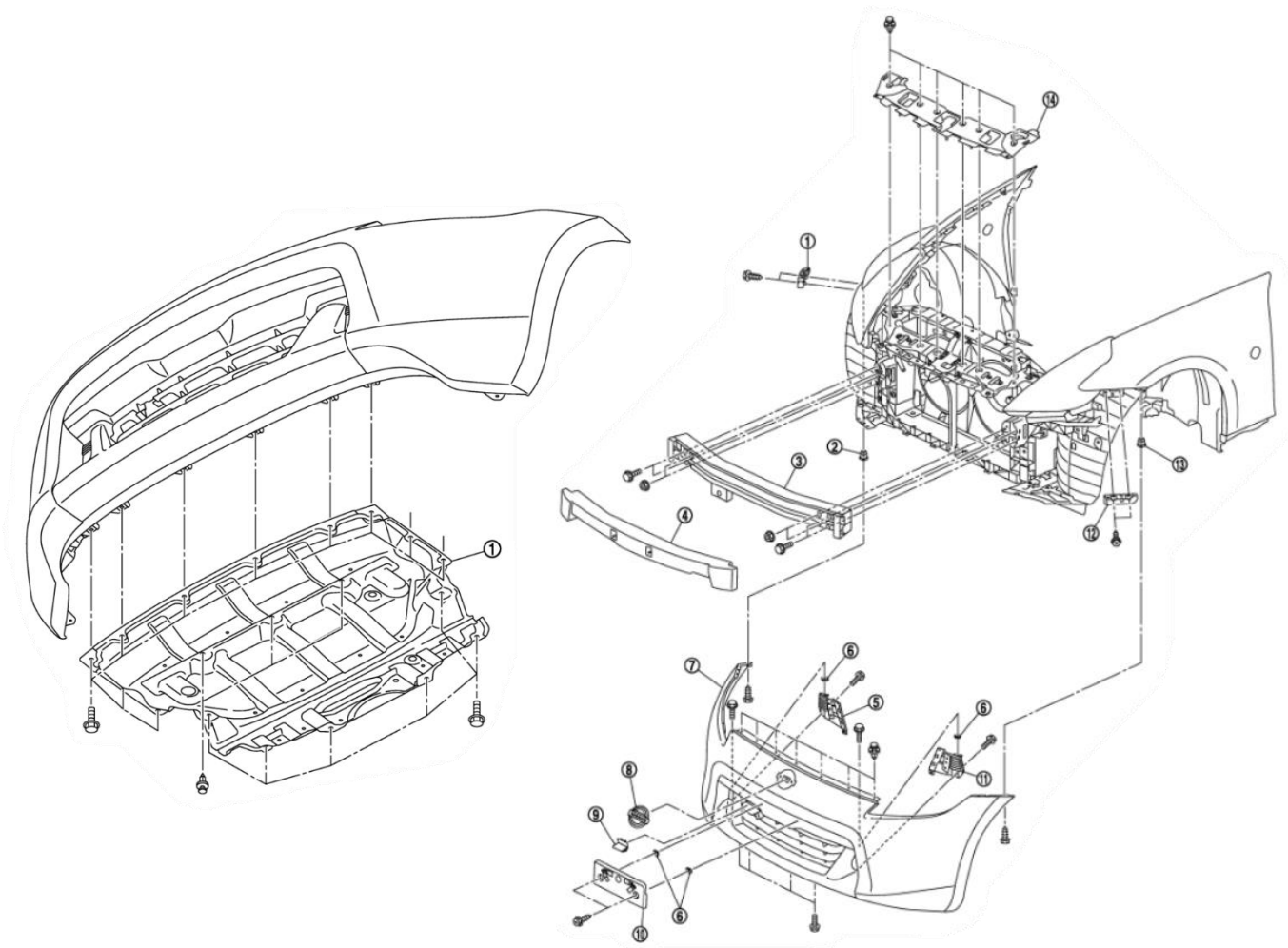
PROCEDURE:

1. Assure the car's ignition is in the OFF position and the NEGATIVE (-) battery terminal is disconnected.
2. Place the transmissions in Park position (or in Reverse gear if equipped with a manual transmission). Apply the parking brake.

3. Locate proper jacking points on vehicle's chassis (refer to vehicle's Owner Manual). Raise and support vehicle using jack & jack stands.
4. Unlatch and raise vehicle's hood. Apply hood prop.

Use the diagrams below as reference for the following steps.

Note: Steps 5-9 refer to 370Z models. Please refer to Factory Service Manual for other models.

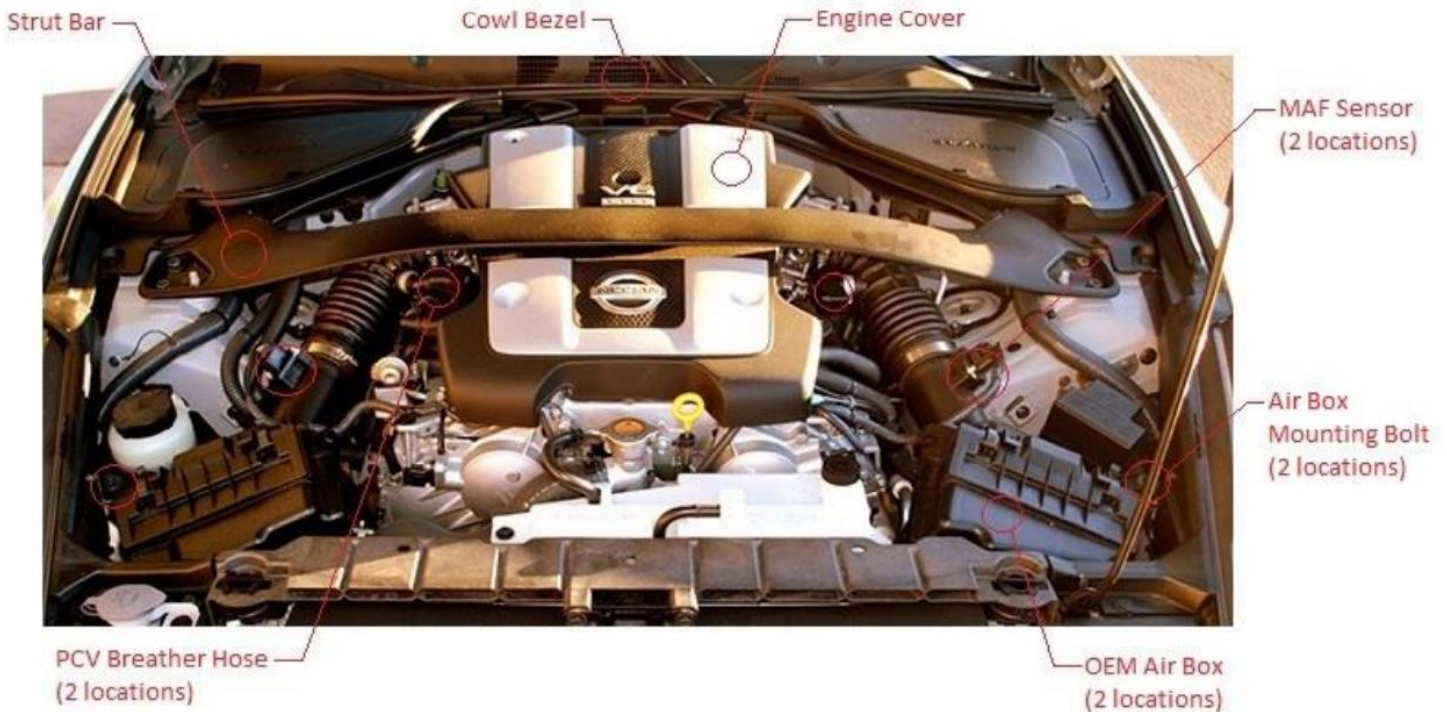


5. Remove the lower engine splash shield (undershroud). Fasteners will be an assortment of 10mm screws and plastic panel clips. Use a flat blade screwdriver to gently pry up the pop clips.
6. Remove plastic clips and peel back front wheel liner to reveal (1) mounting screw at each side of vehicle which mounts corner of bumper fascia to the vehicle. Remove mounting screw on each side.

Note: Turn front wheels of vehicle to the inside of the side you are working on for increased accessibility.

7. Remove (7) plastic pop clips securing upper of bumper fascia to vehicle at radiator core support.
8. With a light pull motion, carefully disengage bumper fascia from clips on vehicle just below each headlight. Remove bumper fascia and set aside.
9. For extra visibility and accessibility, remove (8) plastic clips which attaches diversion panel to composite radiator core support. Set aside diversion panel.

Use the diagram below as reference for the following steps:



10. Remove (2) plastic clips which attach cowl bezel to cowl assembly.
11. Carefully pry loose backside of cowl bezel. Firmly pull cowl bezel and set aside.
12. Remove (4) bolts and (2) hex nuts which attach strut bar to chassis. Remove strut bar and set aside.
13. Locate and unplug (2) MAF sensor connectors as well as its plastic harness clips.
14. Remove (2) acorn nuts and (2) bolts which attaches engine cover to engine. Remove cover and set aside.
15. Remove (1) bolt which attaches passenger side Intake canister to plenum.
16. Using needle-nose pliers, loosen and pull OEM PCV breather hoses at valve cover end.
17. Loosen hose clamp at each throttle body.
18. Remove bolt which mounts each OEM air box to chassis.
19. Remove plastic clip and bolt which attaches air intake duct to composite radiator core support near each OEM air box. Remove air intake ducts.
20. Using a light pull motion, loosen OEM air boxes from vehicle.
21. Completed OEM air intake assembly should be loose at this point. Remove intake boxes, hoses, and intake balancing hose from vehicle, as shown.



22. Using a body saw or Dremel, trim material on composite radiator core support to fit 3” silicone L-hose (as shown).



Before – Passenger Side



After – Passenger Side



After – Driver Side

Note: Be cautious of the AC lines on the driver side as shown in picture above.

23. Locate (2) post-MAF silicone hoses and (2) medium hose clamps. Position hose and loose hose clamp over each throttle body (as shown).

24. Locate (2) air filters, (2) air filter unions, and (2) large hose clamps. Insert smooth side of union into each air filter. Position hose clamp over air filter and tighten.

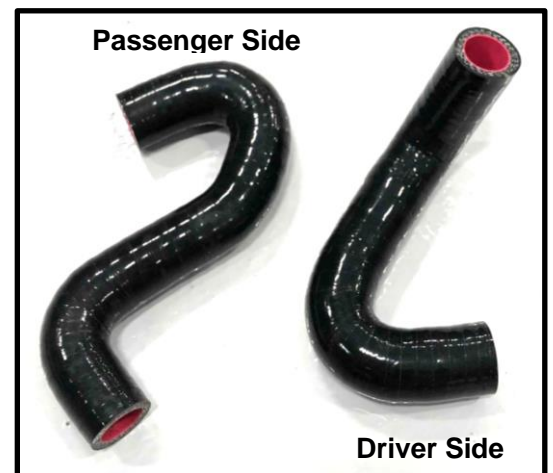
25. Locate Z1 PCV hose set and constant tension clamps. Position hoses with clamps over each valve cover port.



26. Remove (2) bolts which mount each MAF sensor to the OEM air intake assembly. Transfer sensors and bolts to MAF sensor mounting boss on Z1 Air Intake Pipes. Tighten mounting bolts.

Note: Be sure to install MAF sensor onto air intake pipe facing the same direction removed from factory air intake box. There is an arrow on each MAF flange showing the direction of airflow.

27. Locate (2) air intake pipes and (2) large hose clamps. There is a left and right intake pipe. The MAF sensor should be on the bottom side of the air intake pipes, with the arrow showing the direction of airflow pointing towards the throttle bodies. Position loose clamp over post-MAF hose and slide in air intake pipe. Do not tighten hose clamp yet.



Note: Use of Silicone Spray or other dissolvable lubricant is recommended for all assembly which involves silicone hoses.

28. Secure PCV hoses to each post-MAF barb. Slide and tighten hose clamp over port.

29. Locate (2) silicone L-Hoses. Insert hoses through composite radiator core support.

30. Once through core support, position loose large hose clamp over silicone hoses and fit onto air intake pipes. Do not tighten clamp yet.
31. Place loose hose clamp over silicone hoses exposed at front of vehicle.
32. Re-orient post-MAF hoses, air intake pipes, and silicone L-Hoses so to relieve any structural stresses. Once complete, tighten all hose clamps.
33. Plug MAF sensor harnesses back into MAF sensors.
34. Refer to the Factory Service Manual for removal of the OEM crash bar.

Note: Refer to diagram on pg. 3 to assist.

35. Install modified crash bar.

Note: See images provided on last page for specifications on how to modify the OEM front crash bar. Z1 also offers a modification service with a 10 day lead time. Do NOT drive your vehicle without a front crash bar.

36. Locate (2) M6-1.0 x 10mm bolts. Replace OEM bolts circled in picture below. Replacement bolts are shorter than OEM and should remedy interference with silicone hoses.

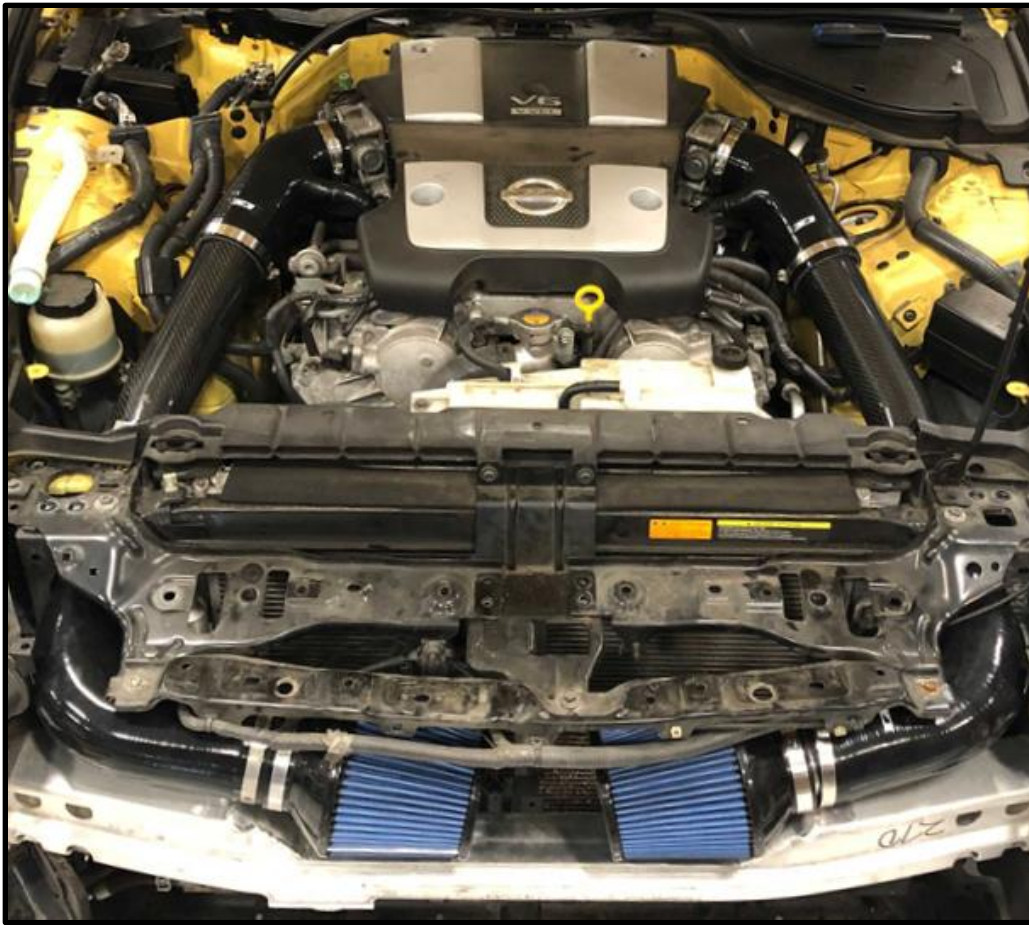


37. Locate Z1 air filter assembly. Slide air filter union in L-hose at front of vehicle and tighten clamp.

Note: Passenger side horn may interfere with air filter assembly. To resolve this issue, simply bend horn mounting bracket towards the radiator until horn is clear of the air filter.



Completed assembly of Z1 3" Air Intake Kit should look as shown:



38. Follow steps #5 through #9 in reverse order to reinstall front bumper fascia.
39. Re-install strut bar and cowl bezel.
40. Re-install engine cover (if desired).
41. Properly lower vehicle from jack stands.
42. Inspect vehicle for loose tools/items.
43. Start vehicle. While at idle, check for leaks or faulty operation of Air Intake Kit.
44. Lower Hood of vehicle.
45. Perform a final test drive of the vehicle.

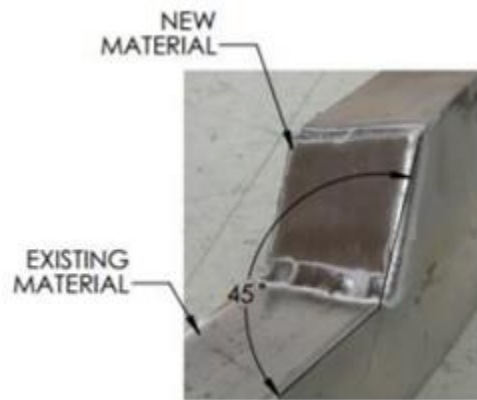
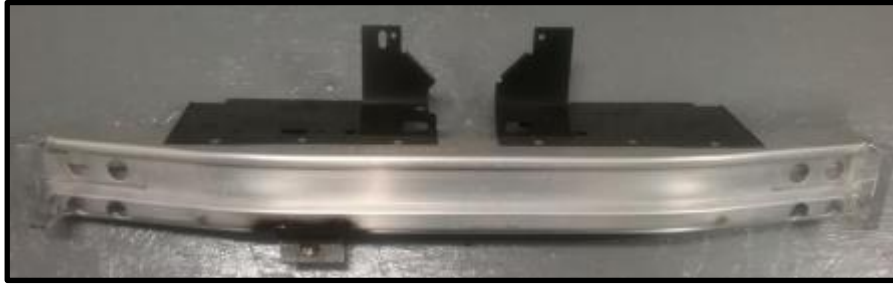
END

Additional Technical Support:

Contact Z1 Motorsports at info@z1motorsports.com
Or call 770 838 7777 between 9am and 6pm ET

370Z Crash Bar Modification Specifications

Note: Nismo model vehicles have a plate riveted to the crash bar (as shown). To utilize the Z1 3" Air Intake Kit, this plate will need to be modified or removed.



WELDING DETAIL

