

Z1 370Z / G37 / Z DIFFERENTIAL BRACE INSTALLATION MANUAL



This Installation Manual is intended for the following models:	
2009-2020	Nissan 370Z
2008-2015	Infiniti G37
2023+	Nissan Z (non-performance)

PROLOGUE:

Study these instructions completely before proceeding to assemble. The installer must have a thorough knowledge of automotive systems operation. If unfamiliar with any of the concepts outlined in this instruction, we recommend the installation be completed by a qualified professional.

WARNING!

Extreme caution should be taken when performing maintenance or performance upgrades to your Vehicle. Please observe and abide by any Warning or Caution labels placed on the various components and tools used when servicing your vehicle. If you have any questions regarding installation or the various components included with the Z1 Motorsports 370Z / G37 / Z Differential Brace Kit, consult with a Professional Mechanic or contact Z1 Motorsports for more information.

PARTS INCLUDED:

Item	Quantity	Description
1	1	Z34 Differential Brace
2	1	Z34 Differential Brace Nut
3	1	M12x1.25, 25mm Bolt
4	1	M10x1.25, 35mm Bolt
5	1	M10x1.25, 80mm Bolt

TOOLS REQUIRED:

- Ratchet
- 19mm Wrench
- 17mm Wrench/Socket
- 14mm Wrench/Socket
- Hydraulic Jack
- (2) 2-Ton (or greater) Jack Stands

SAFETY REQUIREMENTS:

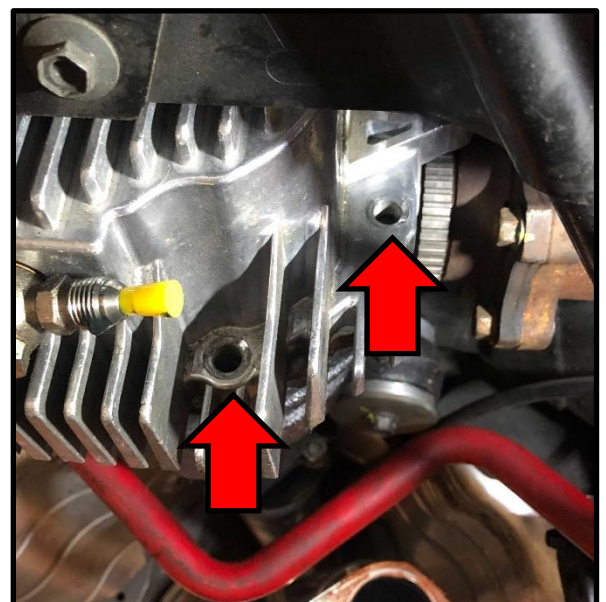
- Always wear safety glasses and any necessary protective garments. If using any fluids, chemicals, or solvents, a respirator is recommended.
- Always turn the ignition to the OFF position and disconnect the NEGATIVE battery terminal.
- Always use properly rated jack stands when working under your Vehicle.
- Always keep limbs and parts away from moving drivetrain parts.
- Only operate drivetrain in safe space and well-ventilated areas.

BEFORE YOU BEGIN:

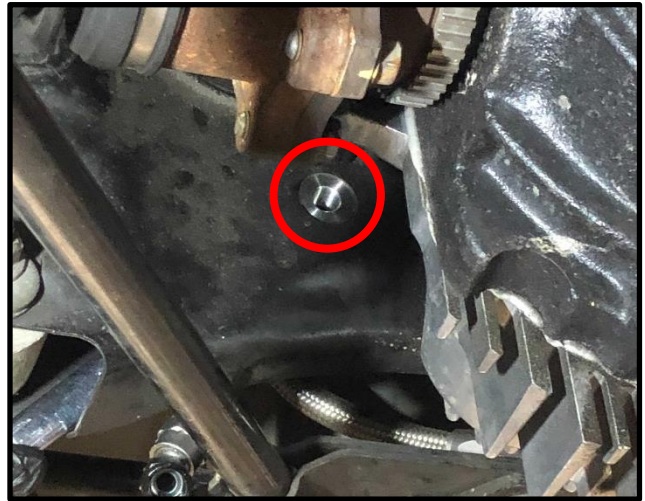
Remove contents from the Z1 Motorsports 370Z / G37 Differential Brace Kit and verify that ALL necessary hardware is present.

PROCEDURE:

1. Place the transmission in Park position (or in Reverse gear if equipped with a manual transmission). Apply the parking brake.
2. Locate proper jacking points on vehicle's chassis (refer to vehicle's Owner Manual). Raise and support vehicle using jack & jack stands.
3. Remove (2) bolts on the bottom right of the rear differential housing cover (as shown).



- Place the supplied 19mm nut into a closed end wrench and feed it into the opening at the bottom right of the rear subframe. Align the nut with the hole in the subframe (as shown).



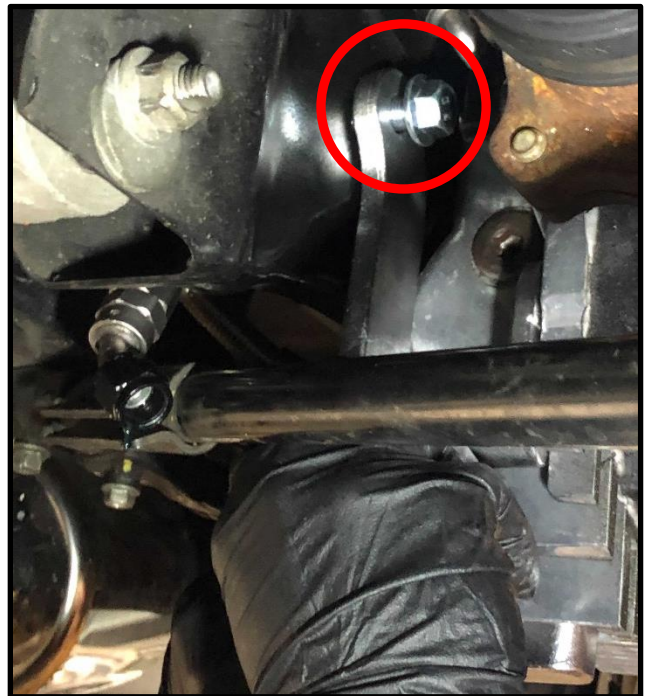
- Locate the supplied M12 bolt and differential brace. Place bolt through top of brace and position on subframe.
- Loosely thread the M12 bolt into the nut through the top mounting hole of the differential brace (as shown).
- Attach the bottom of the brace to the differential housing with (2) M10 bolts.

Note 1: The longer (80mm) bolt uses the bottom mounting hole between the differential's fins, while the shorter (35mm) bolt uses the mounting hole on the right side of the differential housing.

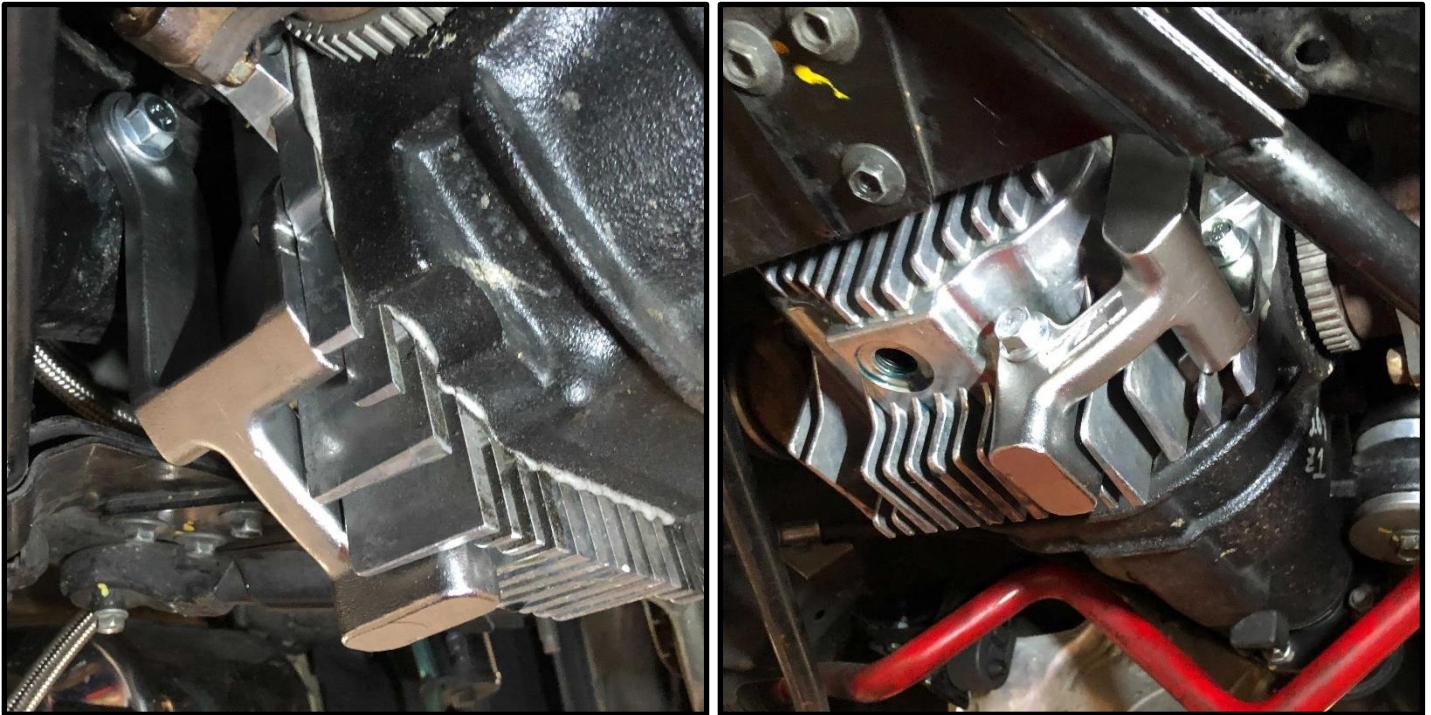
Note 2: Slightly raising the differential with a hydraulic jack may be necessary to align the holes.

- After all bolts are loosely attached, torque them down incrementally.

Note: The bolts securing the brace onto the differential housing should be torqued to 32ft-lbs. The upper bolt into the subframe should be torqued to 55ft-lbs.



9. Completed Z34 Differential Brace should be assembled as shown below:



10. Assure all bolts are properly torqued and inspect vehicle for loose components or issues.

11. Lower vehicle from jack stands.

12. Perform a final test drive of vehicle.

END

Additional Technical Support:
Contact Z1 Motorsports at info@z1motorsports.com
Or call 770 838 7777 between 9am and 6pm ET