

Z1 370Z G37 FRONT BASH BAR INSTALLATION MANUAL



This Installation Manual is intended for the following models:

2009-2020	Nissan 370Z
2008-2015	Infiniti G37/Q60 Coupe
2009-2015	Infiniti G37/Q40 Sedan

PROLOGUE:

Study these instructions completely before proceeding to assembly. The installer must have a thorough knowledge of automotive systems operation. If unfamiliar with any of the concepts outlined in this instruction, we recommend the installation be completed by a qualified professional.

WARNING!

Extreme caution should be taken when performing maintenance or performance upgrades to your vehicle. Please observe and abide by any Warning or Caution labels placed on the various components and tools used when servicing your vehicle. If you have any questions regarding installation or the various components included with the Z1 Motorsports 370Z G37 Bash Bar, consult with a Professional Mechanic or contact Z1 Motorsports for more information.

PARTS INCLUDED:

Item	Quantity	Description
1	1	Z1 370Z G37 Bash Bar

TOOLS REQUIRED:

- Hydraulic Jack
- (2) 2-Ton (or greater) Jack Stands
- Ratchet
- Ratchet Extension(s)
- 10mm Socket/Wrench
- 14mm Socket/Wrench
- Flat-Head Screwdriver
- Torque Wrench
- Channel Lock Pliers

SAFETY REQUIREMENTS:

- Always wear safety glasses and any necessary protective garments. If using any fluids, chemicals, or solvents, a respirator is recommended.
- Always turn the ignition to the OFF position and disconnect the NEGATIVE battery terminal.
- Always use properly rated jack stands when working under your vehicle.
- Always keep limbs and parts away from moving drivetrain parts.
- Only operate drivetrain in safe space and well-ventilated areas.

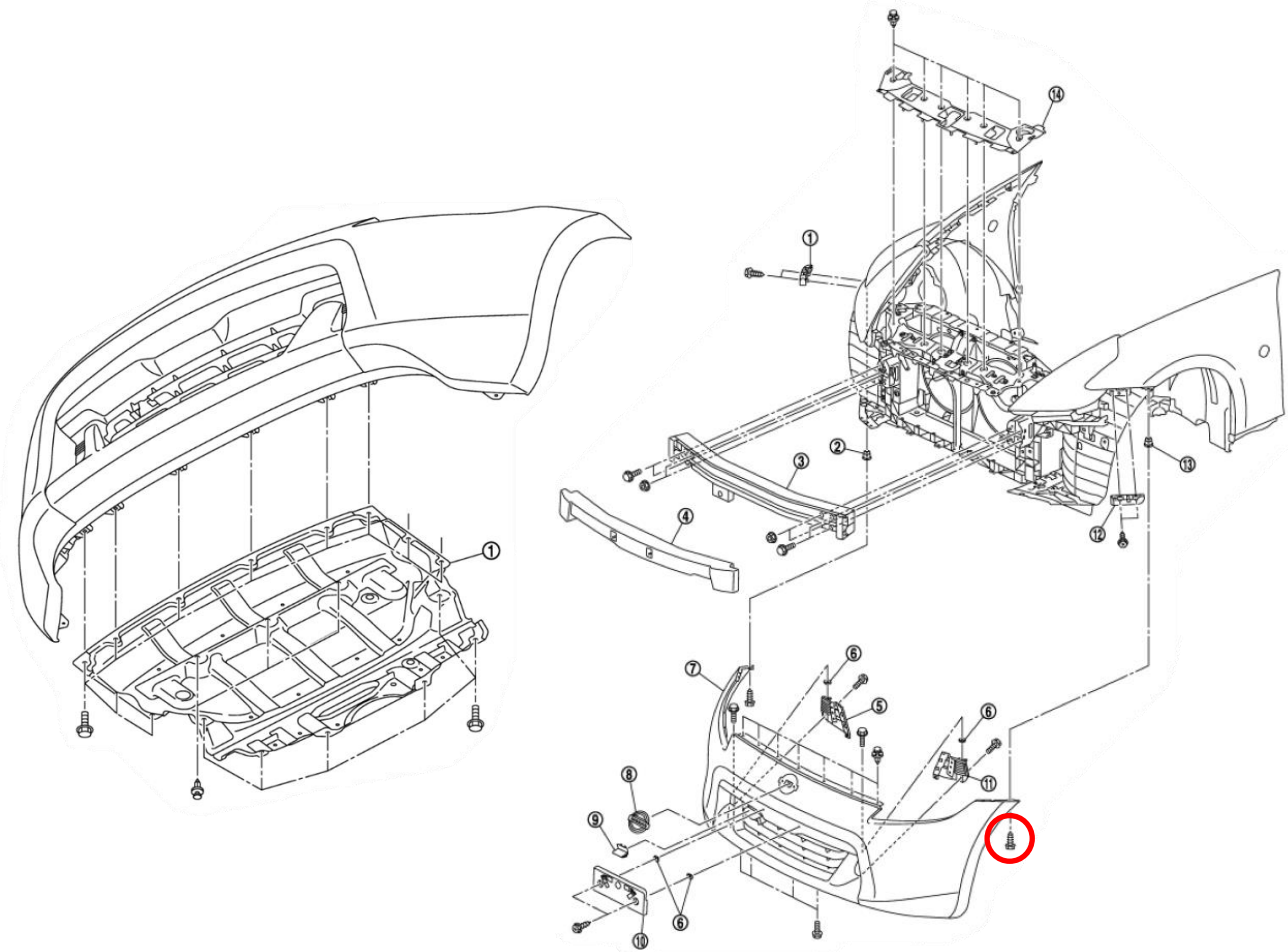
BEFORE YOU BEGIN:

Remove contents from the Z1 Motorsports 370Z G37 Bash Bar and verify that ALL necessary hardware is present.

PROCEDURE:

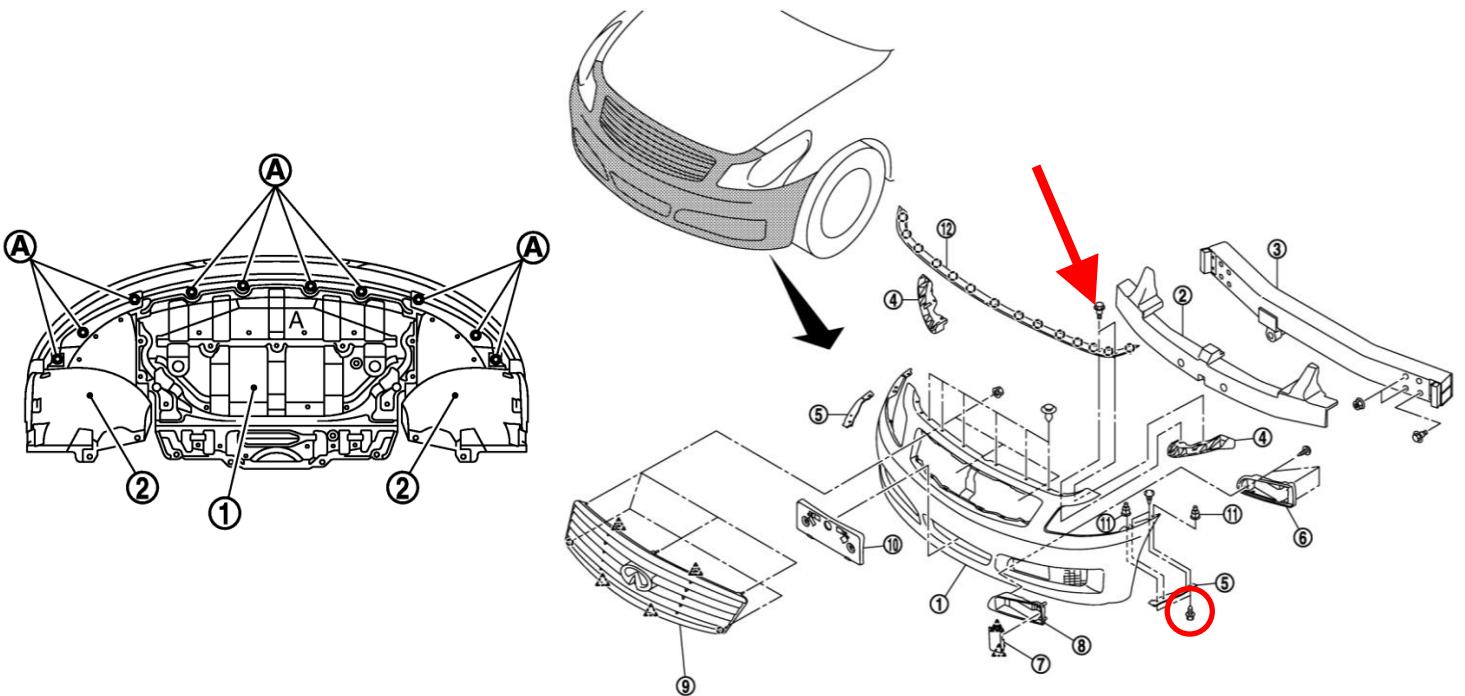
1. Place the transmission in Park position (or in Reverse gear if equipped with a manual transmission). Apply the parking brake.
2. Locate proper jacking points on vehicle's chassis (refer to vehicle's Owner Manual). Raise and support vehicle using jack & jack stands.
3. Unlatch and raise vehicle's hood. Apply hood prop.

370Z Owners: Use the diagram below as reference for steps # 4 - 10.

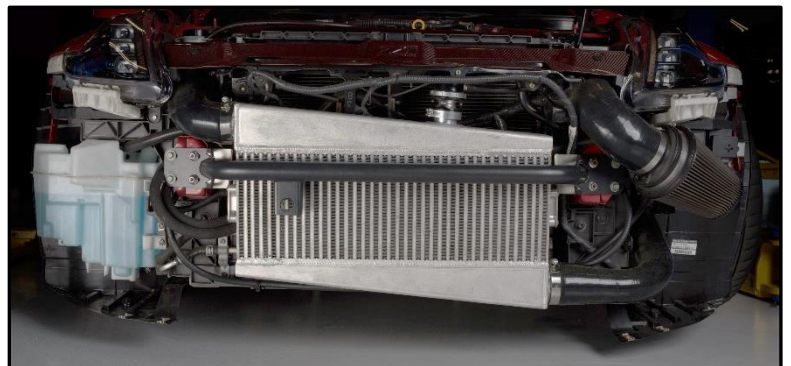


4. Remove the lower engine splash shield (undershroud). Fasteners will be an assortment of 10mm screws and plastic panel clips. Use a flat blade screwdriver to gently pry up the pop clips.
5. Remove plastic clips and remove the front wheel/fender liners to reveal (1) mounting screw at each side of vehicle which mounts corner of bumper fascia to the vehicle (screw circled in diagram above). Remove mounting screw on each side.
6. Remove (7) plastic pop clips securing upper of bumper fascia to vehicle at radiator core support.
7. With a light pull motion, carefully disengage bumper fascia from clips on vehicle just below each headlight. Remove bumper fascia and set aside.
8. Remove (8) plastic clips which attach diversion panel/radiator air guide to composite radiator core support. Set aside diversion panel.
9. Remove the foam impact absorber in front of the crash bar.
10. Remove (4) bolts and (4) hex nuts securing front crash bar to chassis, retain the hardware as it will be reused. Remove crash bar.

G37 Owners: Use the diagram below as reference for steps # 11 - 18.



11. Remove the lower engine splash shield (undershroud). Fasteners will be an assortment of 10mm screws and plastic panel clips. Use a flat blade screwdriver to gently pry up the pop clips.
12. Remove plastic clips and remove the front wheel/fender liners to reveal (2) mounting screws at each side of vehicle which mounts corner of bumper fascia to the fender (screw circled in diagram above). Remove mounting screws on each side.
13. Lift up on the hood seals at the front corner of the engine bay to reveal (2) mounting screws at each side of vehicle that mounts the upper corner of bumper fascia to the fender (screw shown with arrow above). Remove mounting screws on each side.
14. Remove (6) plastic pop clips securing upper of bumper fascia to vehicle at radiator core support.
15. With a light pull motion, carefully disengage bumper fascia from clips on vehicle just below each headlight. Remove bumper fascia and set aside.
16. Remove plastic clips and bolts which attach diversion panel/radiator air guide to composite radiator core support. Set aside diversion panel.
17. Remove the foam impact absorber in front of the crash bar.
18. Remove (4) bolts and (4) hex nuts securing front crash bar to chassis, retain the hardware as it will be reused. Remove crash bar.
19. Locate Z1 Bash Bar.
20. Install Z1 bash bar onto the studs that the OE crash bar was attached to.
21. Secure Z1 bash bar to vehicle using the (4) bolts and (4) hex nuts that were removed in step # 8.



Note: The Nissan factory service manual only provides a torque spec for the Nismo crash bar at 18ft-lbs, but doesn't list one for the non-Nismo models. 18ft-lbs would likely be correct for the non-Nismos, but when we install these in house, we just hit them with an impact for a couple ugga-duggas.

22. Reinstall bumper by following the previous steps in reverse order.
23. Check vehicle for loose tools/components.
24. Lower vehicle from jack and jackstands.
25. Take vehicle for a test drive.

END

Additional Technical Support:

Contact Z1 Motorsports at info@z1motorsports.com
Or call 770-838-7777 between 9am and 6pm ET