

Z1 DE BAFFLED OIL PAN INSTALLATION MANUAL



This Installation Manual is intended for the following models:	
2003-2006	Nissan 350Z
2003-2006	Infiniti G35 (Sedan)
2003-2007	Infiniti G35 (Coupe)

PROLOGUE:

Study these instructions completely before proceeding to assembly. The installer must have a thorough knowledge of automotive systems operation. If unfamiliar with any of the concepts outlined in this instruction, we recommend the installation be completed by a qualified professional.

WARNING!

Extreme caution should be taken when performing maintenance or performance upgrades to your vehicle. Please observe and abide by any Warning or Caution labels placed on the various components and tools used when servicing your vehicle. If you have any questions regarding installation or the various components included with the Z1 Motorsports DE Aluminum Oil Pan, consult with a Professional Mechanic, or contact Z1 Motorsports for more information.

PARTS INCLUDED:

Item	Quantity	Description
1	1	Z1 Aluminum Oil Pan
2	1	Oil Pickup Spacer
3	2	M8 x 40mm Flanged Hex Head Screw
4	10	M6 x 16mm Flanged Hex Head Screw
5	1	RTV Gasket Maker

TOOLS REQUIRED:

- Hydraulic Jack
- (2) 2-Ton (or greater) Jack Stands
- Ratchet
- Ratchet Extension(s)
- Assorted Metric Wrenches
- Assorted Metric Sockets
- Torque Wrench
- RTV Gasket Maker
- Razor Blade
- Scotch Brite Pad

SAFETY REQUIREMENTS:

- Always wear safety glasses and any necessary protective garments. If using any fluids, chemicals, or solvents, a respirator is recommended.
- Always turn the ignition to the OFF position and disconnect the NEGATIVE battery terminal.
- Always use properly rated jack stands when working under your vehicle.
- Always keep limbs and parts away from moving drivetrain parts.
- Only operate drivetrain in safe space and well-ventilated areas.

BEFORE YOU BEGIN:

Remove contents from the Z1 Motorsports DE Aluminum Oil Pan and verify that ALL necessary hardware is present.

It is best to install this product when performing an Oil change as draining the engine oil is required for installation.

PROCEDURE:

1. Place the transmission in Park position (or in Reverse gear if equipped with a manual transmission). Apply the parking brake.
2. Locate proper jacking points on vehicle's chassis (refer to vehicle's Owner Manual). Raise and support vehicle using jack & jack stands.
3. Drain and collect engine oil from the OE Oil Drain Plug. *Figure 1.*



Figure 1

4. Remove (8) eight of the OE Bolts securing the OE Oil Pan to the Vehicle. Loosen (2) two bolts on the outer edges of the pan, but do not remove them yet.

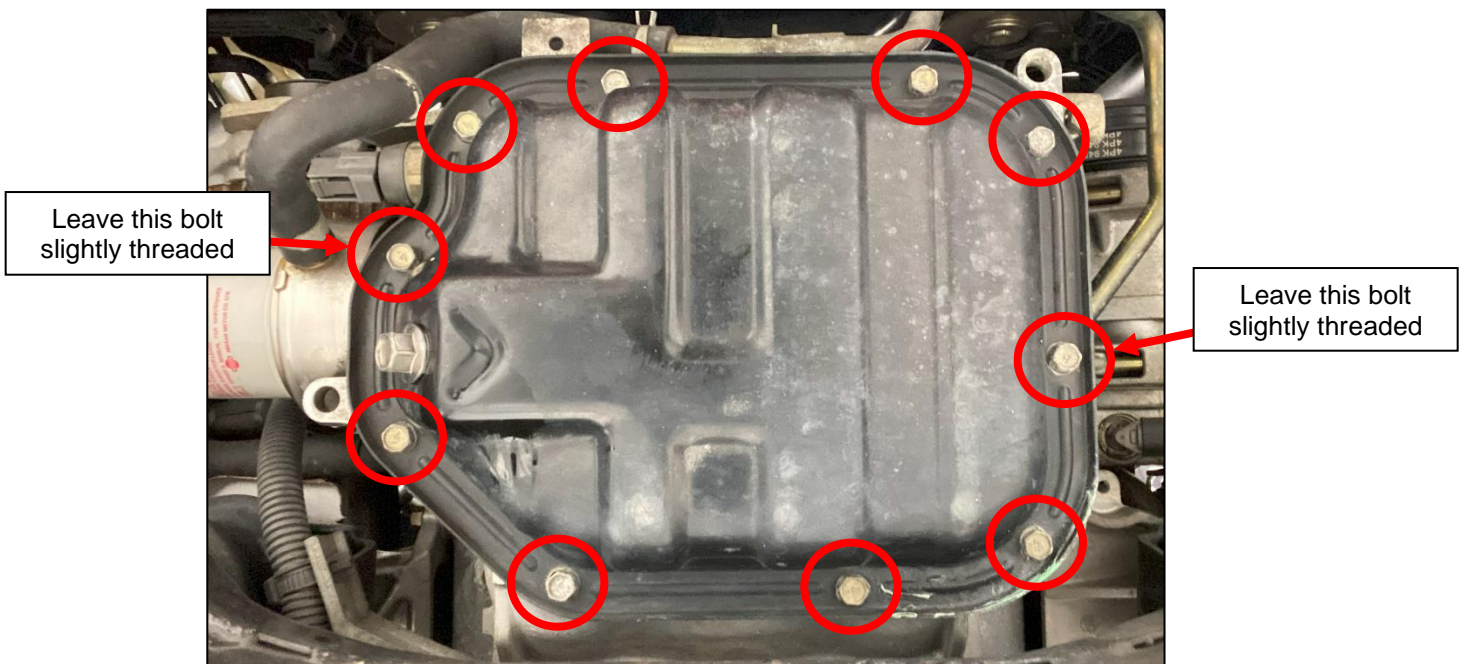


Figure 2

- Using a Screwdriver, Pry Bar, or another similar tool, pry the OE Oil Pan away from the engine.
- Remove the bolt closest to the Oil Drain Plug and allow the remaining oil to drain. Once the oil has finished draining, remove the last bolt and the OE Oil Pan from the vehicle. *Figure 3.*

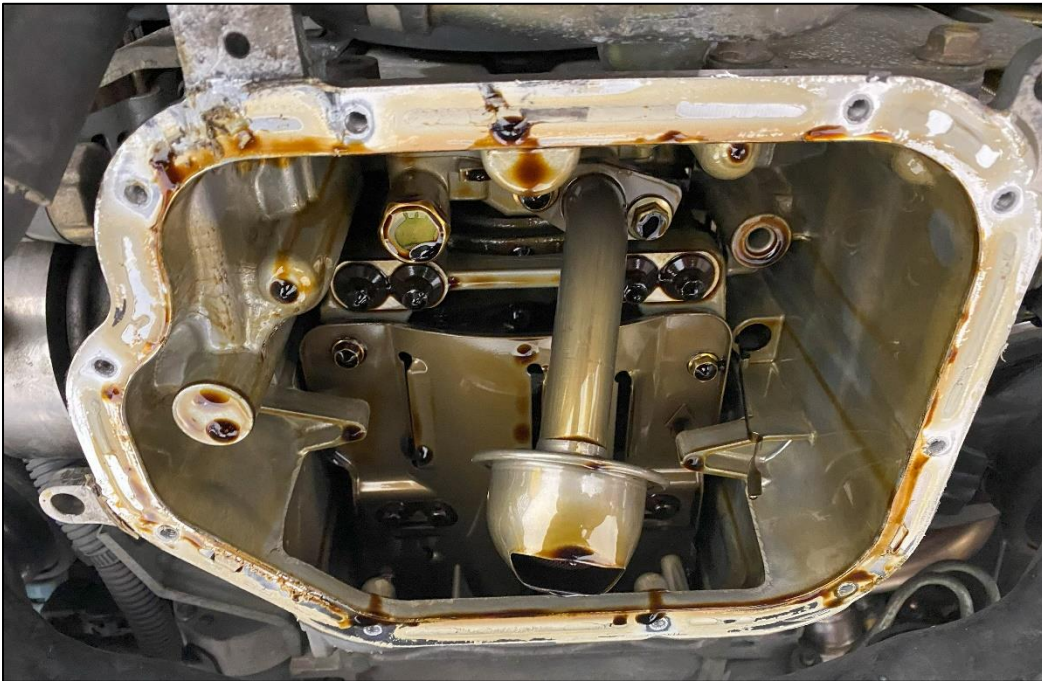


Figure 3

- Some DE Engines will have an Internal Baffle from the Factory. If your engine is equipped with one, remove the (5) five bolts securing the baffle, and remove the baffle. If your engine does not have the Internal Baffle, skip to *Step 8.* *Figure 4.*

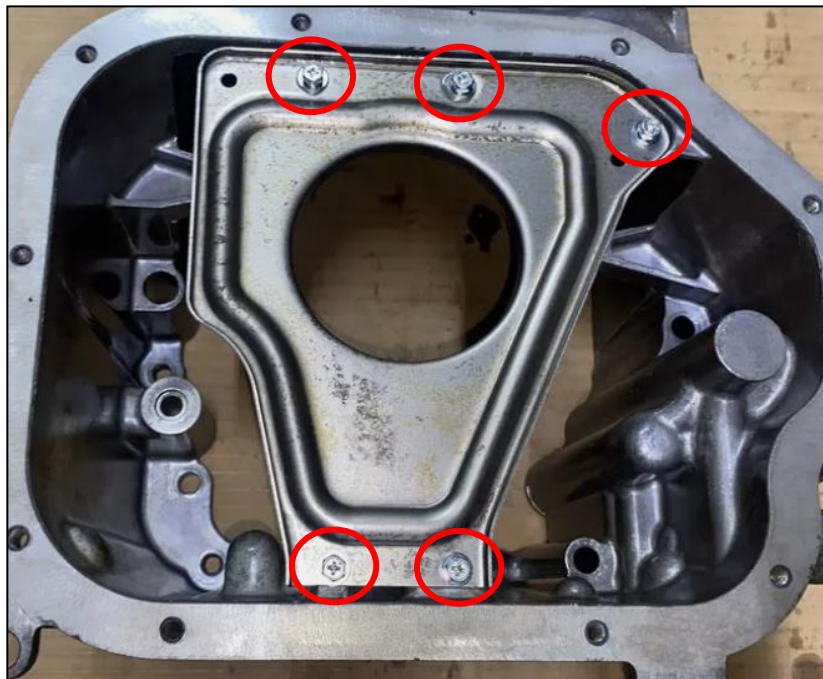


Figure 4

- Using a razor blade and Scotch Brite pad, clean the Oil Pan mating surface of any gasket material and debris. A clean mating surface is necessary to ensure no oil leaks. *Figure 5.*



Figure 5

9. Remove the (2) two OE Bolts that secure the Oil Pickup to the engine. Retain the Oil Pickup. *Figure 6.*

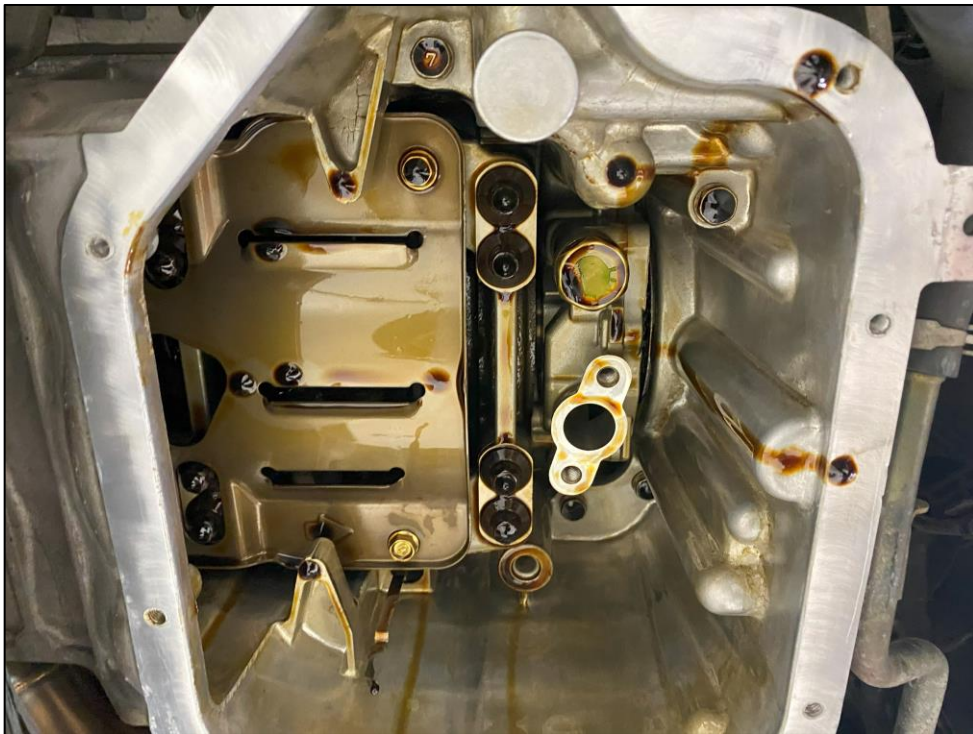
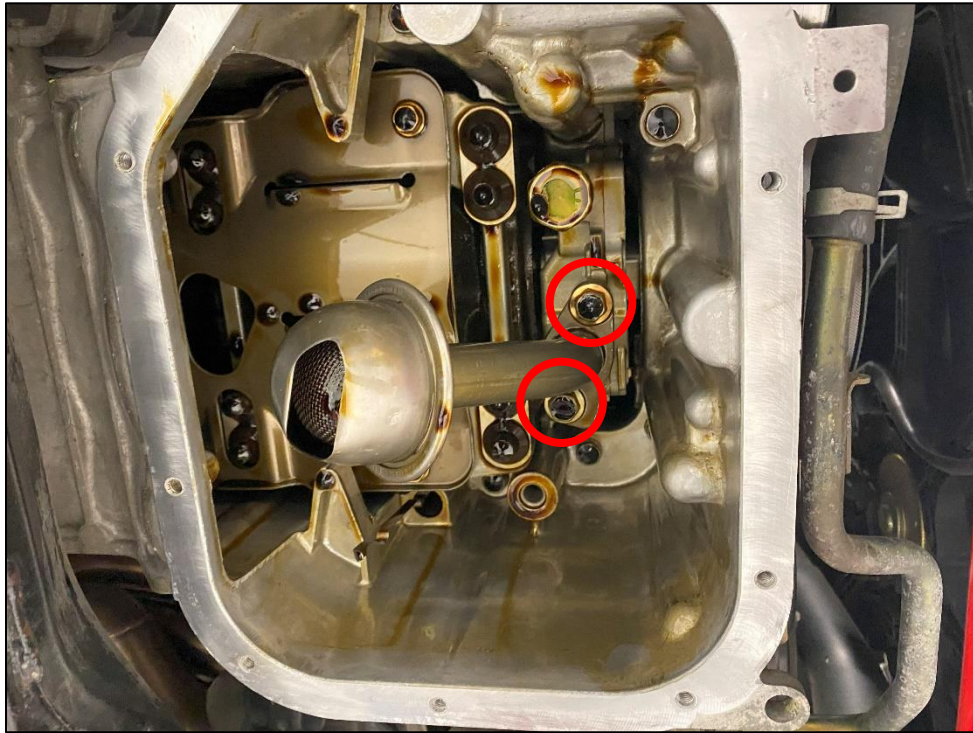


Figure 6

10. Locate the (2) two M8 x 40mm Flanged Hex Head Screws, and the Oil Pickup Spacer. Place the Pickup Spacer on top of the OE Oil Pickup and secure it to the engine with the (2) two M8 Screws. Torque to **16 ft-lbs.** *Figure 7.*

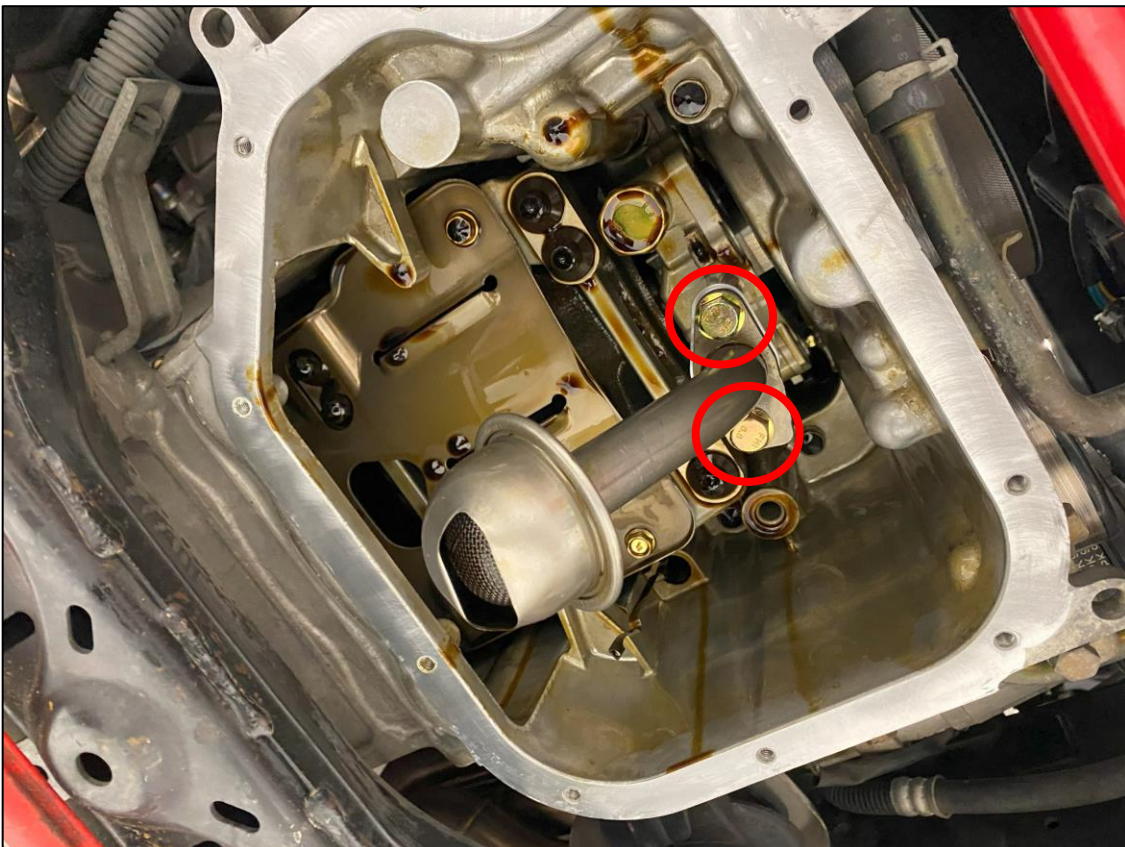


Figure 7

11. Locate the DE Aluminum Oil Pan. Clean the mating surface of any debris.

12. Using RTV Gasket Maker, run a thin bead around the mating surface of the new Oil Pan. Be careful not to use too much as it can spill into the engine. *Figure 8.*

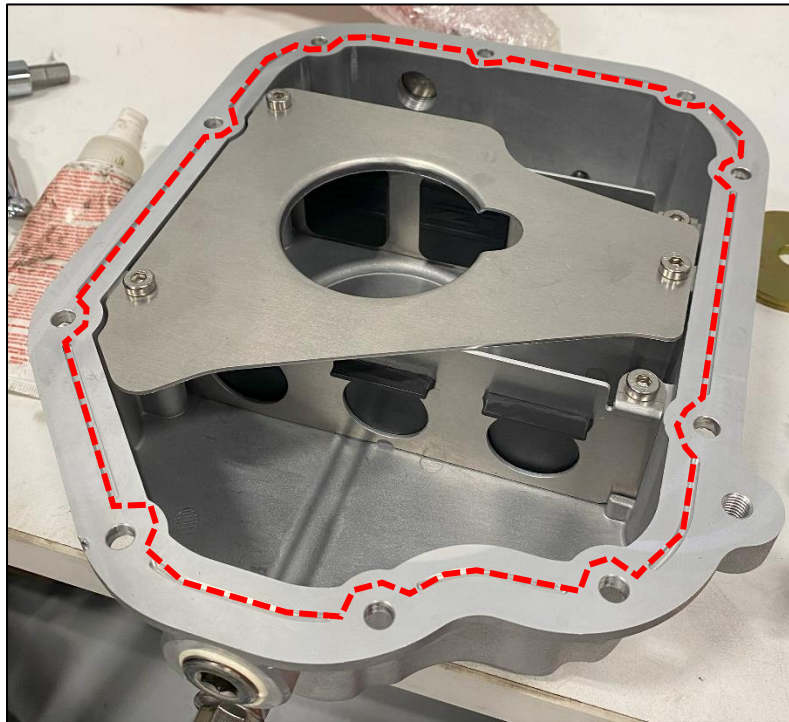


Figure 8

13. Ensure that the mating surface of the engine is clean and free of residual oil and place the new Oil Pan into position. Loosely secure with the (10) ten M6 x 16mm Flanged Hex Head Screws. *Figure 9.*

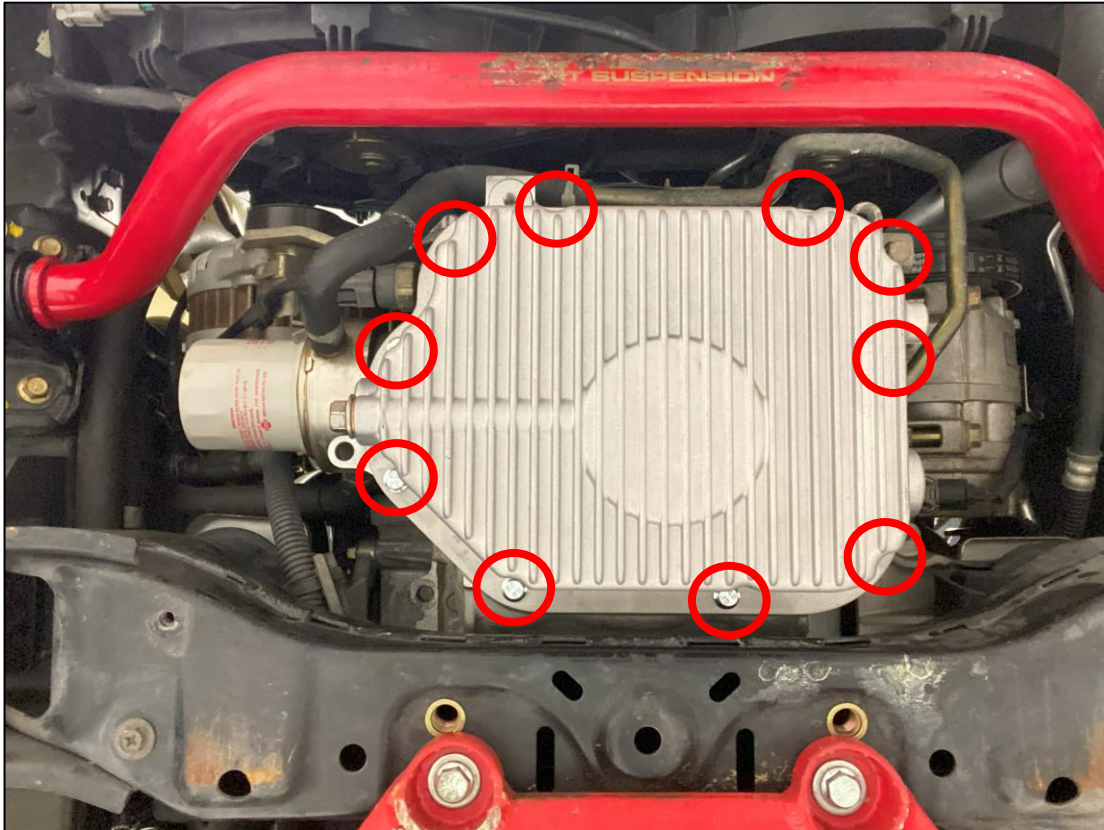


Figure 9

14. After all the M6 x 16mm Screws have been loosely installed, torque in a crisscross pattern to **78 in-lbs** or **6.5 ft-lbs**. **DO NOT** over tighten these bolts. Over tightening these bolts can cause them to snap.
15. Allow the RTV to fully cure before adding Oil to your engine. Once cured, prefill your engine with oil. The new DE Aluminum Oil Pan **ADDS 1 QUART OF FLUID CAPACITY** to your engine, so add **1 EXTRA** Quart of Oil when filling.
16. Check for any oil leaks after filling. If there are leaks, the RTV Gasket may need to be redone and allowed to cure for a longer time. Remove the oil pan, clean the mating surfaces and reapply RTV if necessary.

END

Additional Technical Support:
Contact Z1 Motorsports at info@z1motorsports.com
Or call 770-838-7777 between 9am and 6pm ET