

Z1 VQ35DE HEADERS INSTALLATION MANUAL



This Installation Manual is intended for the following models:	
2003-2006	Nissan 350Z
2003-2007	Infiniti G35 (Coupe)
2003-2006	Infiniti G35 (Sedan)

PROLOGUE:

Study these instructions completely before proceeding to assembly. The installer must have a thorough knowledge of automotive systems operation. If unfamiliar with any of the concepts outlined in this instruction, we recommend the installation be completed by a qualified professional.

WARNING!

Extreme caution should be taken when performing maintenance or performance upgrades to your vehicle. Please observe and abide by any Warning or Caution labels placed on the various components and tools used when servicing your vehicle. If you have any questions regarding installation or the various components included with the Z1 Motorsports VQ35DE Headers, consult with a Professional Mechanic, or contact Z1 Motorsports for more information.

PARTS INCLUDED:

Item	Quantity	Description
1	1	Driver Side Header
2	1	Passenger Side Header

TOOLS REQUIRED:

- Hydraulic Jack
- (2) 2-Ton (or greater) Jack Stands
- Ratchet
- Ratchet Extension(s)
- Assorted Metric Wrenches
- Assorted Metric Sockets
- Torque Wrench
- Channel Lock Pliers

SAFETY REQUIREMENTS:

- Always wear safety glasses and any necessary protective garments. If using any fluids, chemicals, or solvents, a respirator is recommended.
- Always turn the ignition to the OFF position and disconnect the NEGATIVE battery terminal.
- Always use properly rated jack stands when working under your vehicle.
- Always keep limbs and parts away from moving drivetrain parts.
- Only operate drivetrain in safe space and well-ventilated areas.

BEFORE YOU BEGIN:

Remove contents from the Z1 Motorsports VQ35DE Headers and verify that ALL necessary hardware is present.

PROCEDURE:

1. Place the transmission in Park position (or in Reverse gear if equipped with a manual transmission). Apply the parking brake.
2. Locate proper jacking points on vehicle's chassis (refer to vehicle's Owner Manual). Raise and support vehicle using jack & jack stands.
3. Allow the engine and exhaust to cool down. It is helpful to spray penetrating fluid on the Exhaust Manifold Flanges and exhaust hardware to help ease removal.
4. Disconnect and remove the Y-Pipe from the vehicle. *Figure 1.*

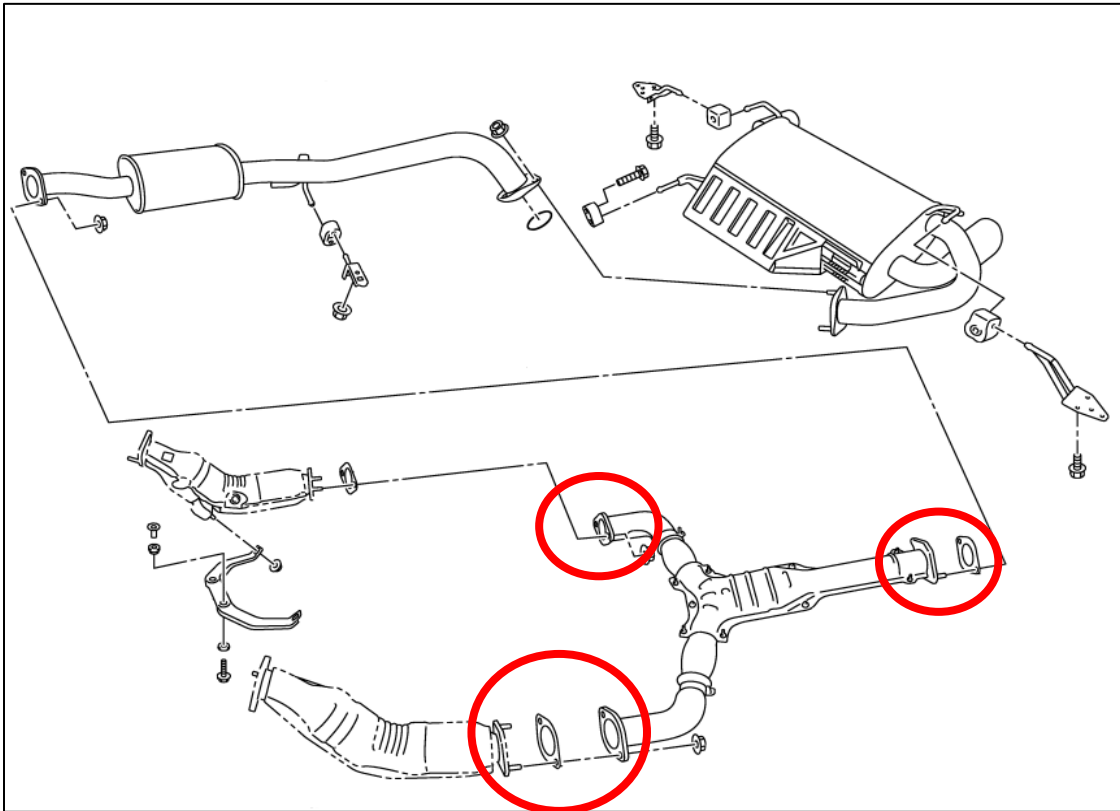


Figure 1

5. Disconnect and remove the Exhaust Mounting Bracket. *Figure 2.*

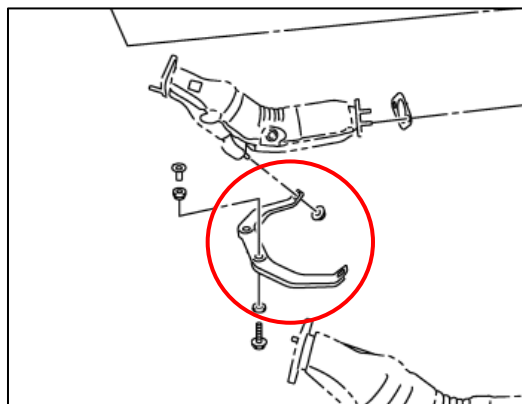


Figure 2

6. Disconnect all (4) four Oxygen Sensors. *Figure 2.*

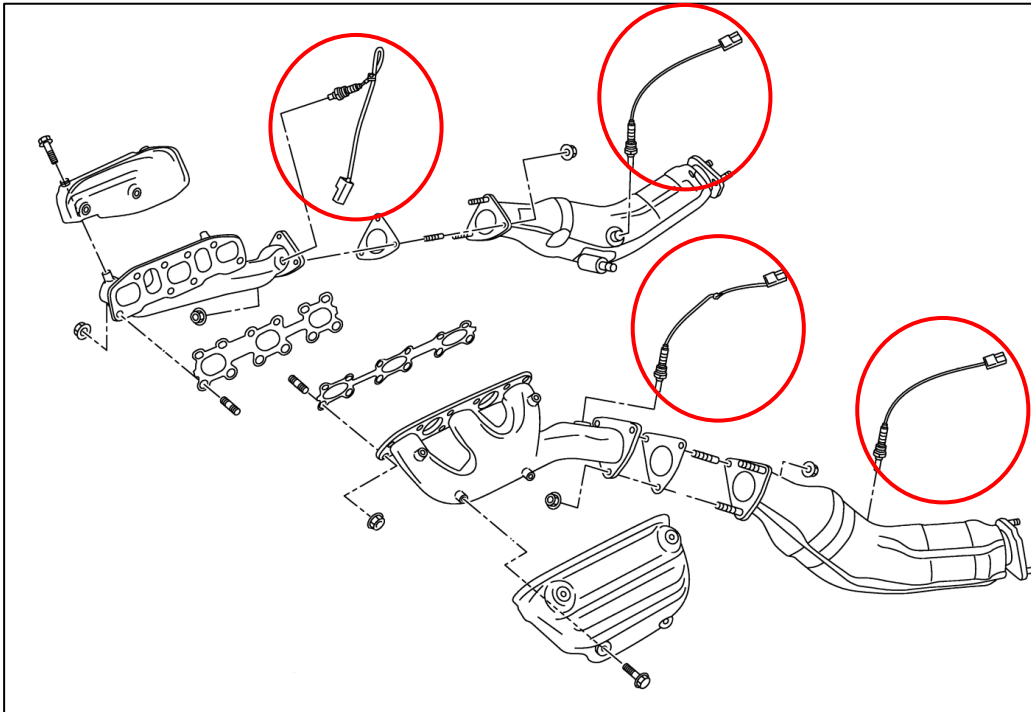


Figure 3

7. Optionally you can disconnect and remove the Downpipes/Catalytic Converter from the vehicle. In house, we leave them connected and remove them with the Exhaust Manifold as once piece. *Figure 2.*

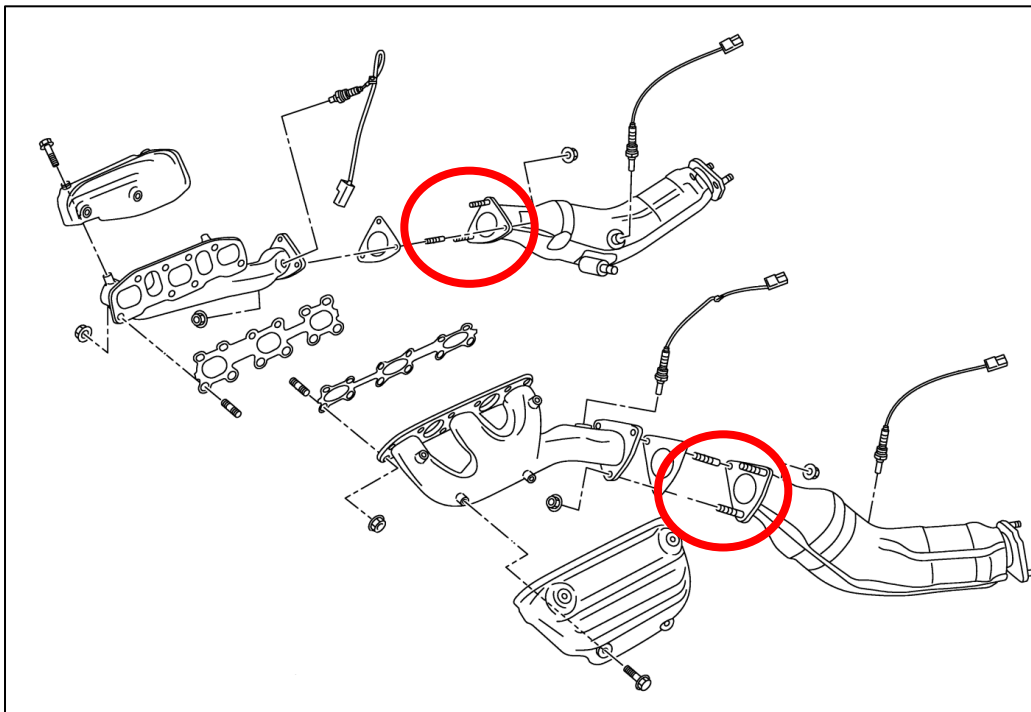


Figure 4

8. Remove Strut Tower Brace if equipped.
9. Remove Engine Cover if equipped.
10. Remove Air Intake.
11. Remove Undershroud if equipped.
12. Drain and collect Engine Coolant.
13. Remove the Water/Coolant Pipes on each side of the engine. *Figure 5.*

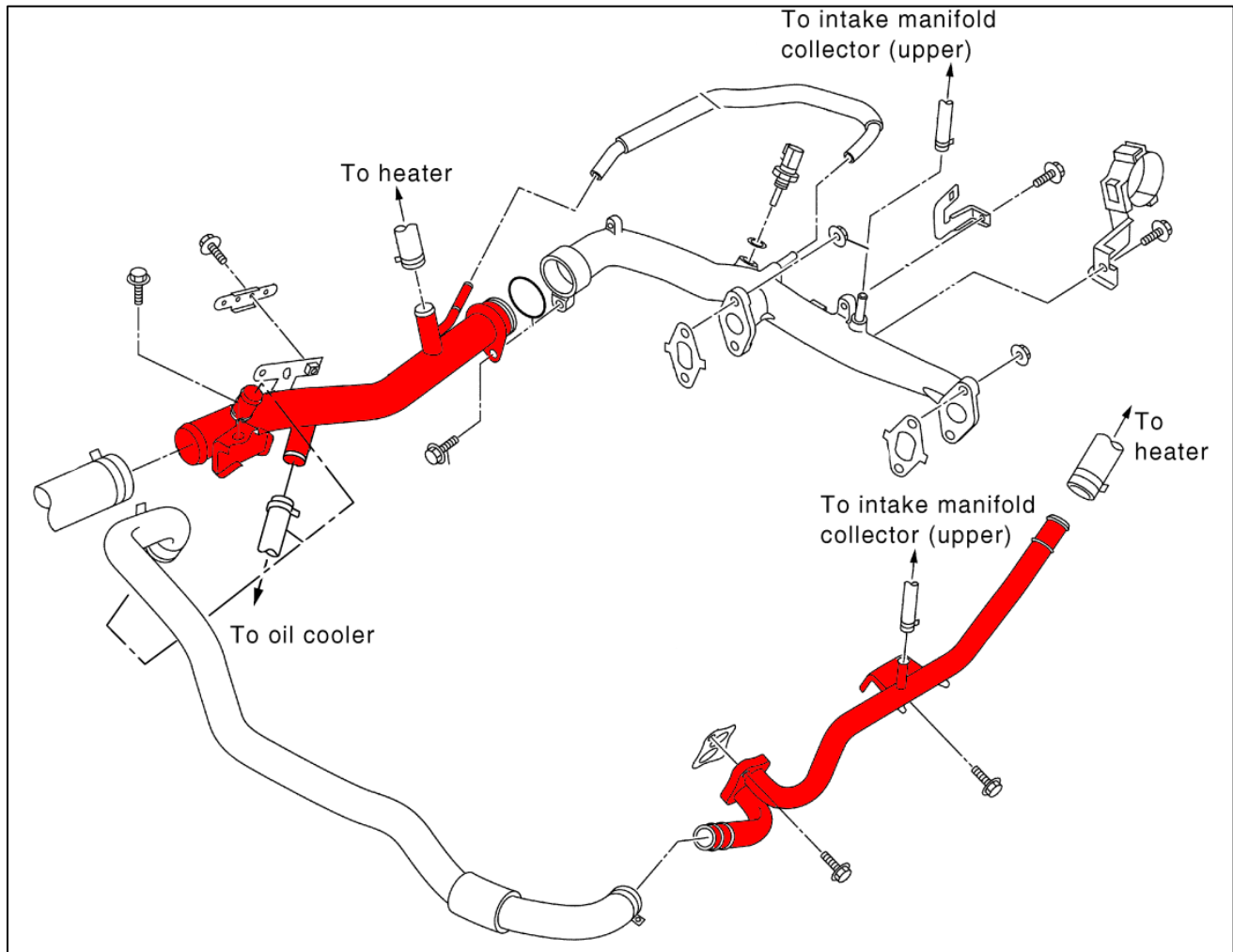


Figure 5

14. Optionally, mark the Steering Shaft and disconnect it. This is not necessary but will allow extra room to work.

15. Remove the Heat Shields from the Exhaust Manifolds. Each is held on by (4) four bolts. *Figure 6.*

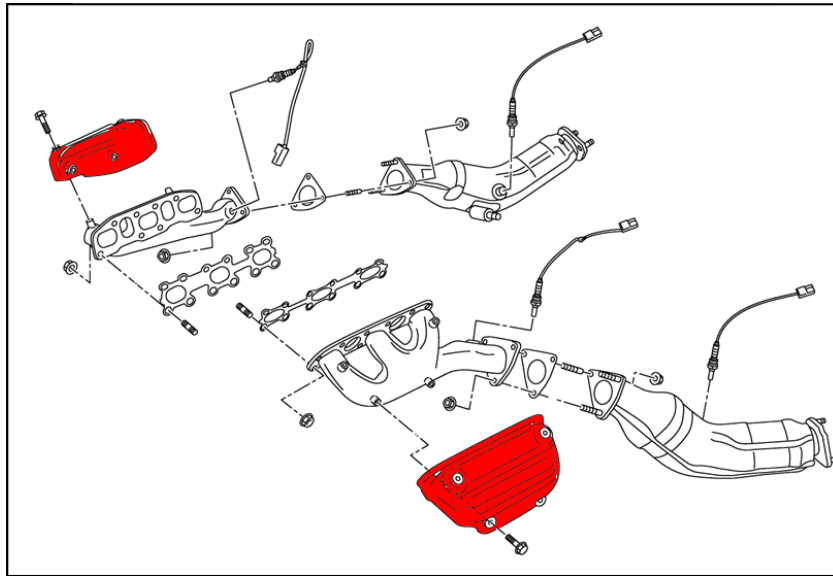


Figure 6

16. Remove the Exhaust Manifold Nuts in reverse order as shown below. This will require removal from both the top and bottom of the vehicle and takes a lot of patience. *Figure 7.*

NOTE: Disregard 7 and 8 in the diagram, those are for reassembly.

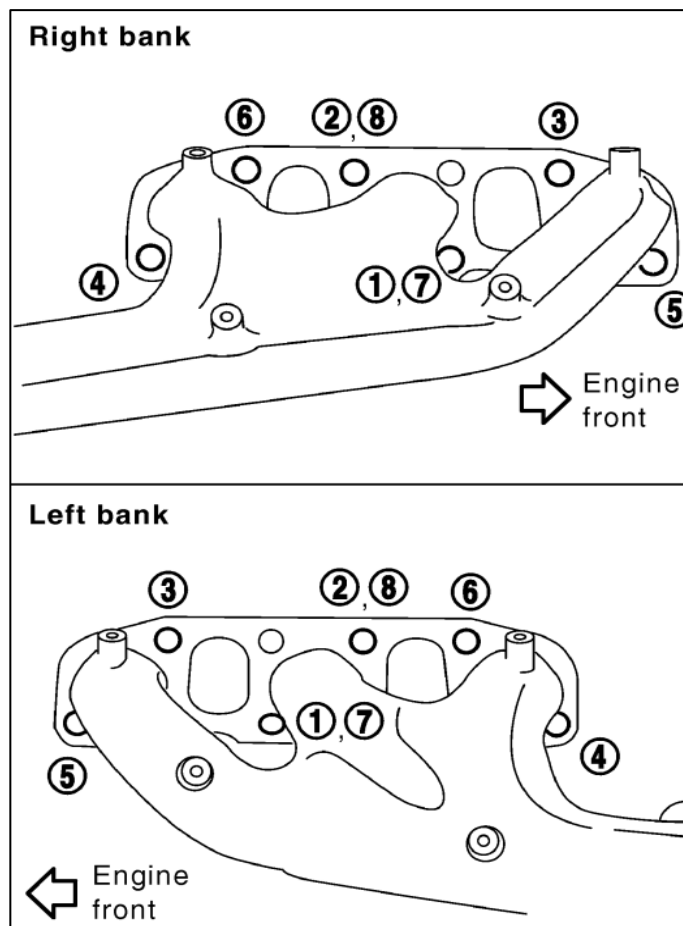


Figure 7

- 17. Remove the Exhaust Manifolds from the vehicle.
- 18. Remove the Exhaust Manifold Gasket.
- 19. Clean mating surface of the Exhaust Manifold.
- 20. Reinstall Manifold Gaskets or new ones. Make sure the Gaskets are oriented correctly as shown below in *Figure 8*.

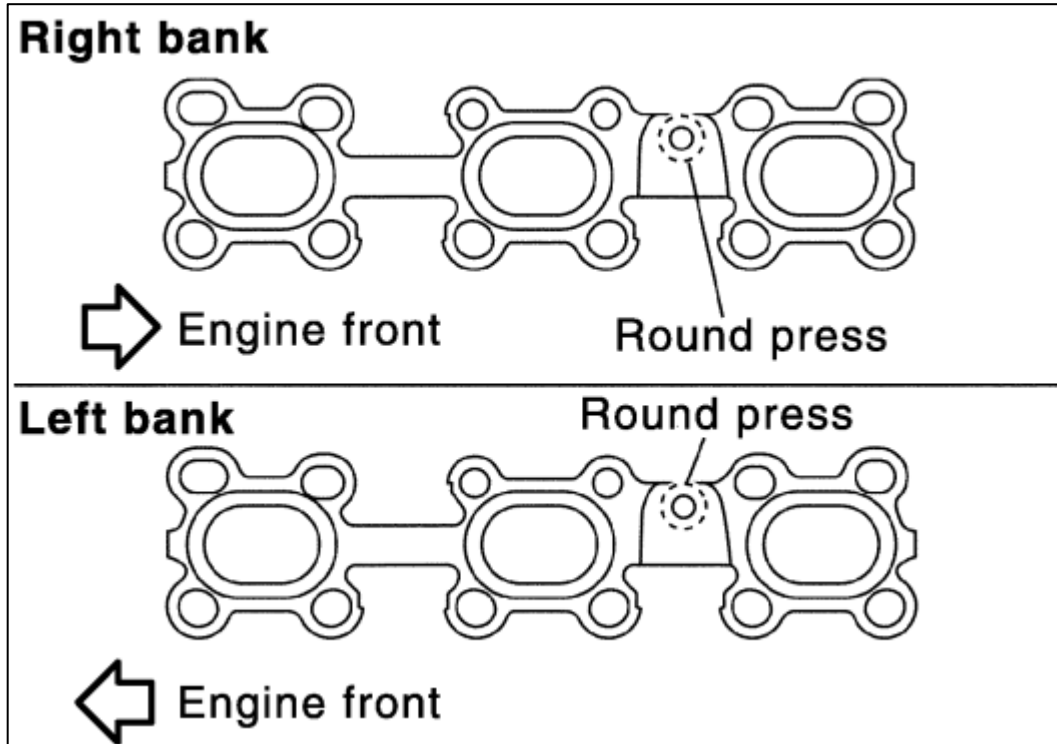


Figure 8

21. Locate the Z1 Header. Install it onto the Exhaust Manifold Studs. Secure it with the Nuts removed in *Step 15* or with new Nuts. Once positioned, torque the nuts to **22 ft-lbs** in the order shown below. *Figure 9*.

NOTE: If the Exhaust Studs were removed, reinstall them first and torque to **10-12 ft-lbs**.

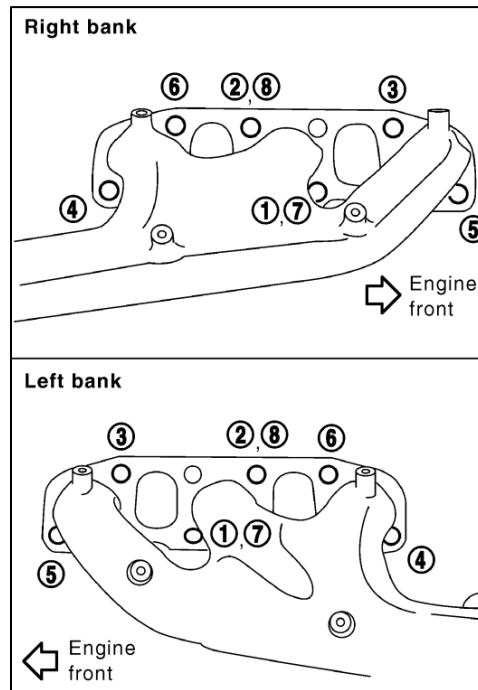


Figure 9

22. Follow *Steps 4-14* in reverse order to reinstall all other Vehicle Components.

NOTE: Now is a good time to replace any gaskets in the Coolant System of the vehicle.

23. Refill and bleed Coolant System.

END

Additional Technical Support:
Contact Z1 Motorsports at info@z1motorsports.com
Or call 770-838-7777 between 9am and 6pm ET