

Z1 ECCENTRIC BOLTS INSTALLATION MANUAL



This Installation Manual is intended for the following models:	
2003-2008	Nissan 350Z
2003-2008	Infiniti G35
2009-2020	Nissan 370Z
2008-2015	Infiniti G37
2014+	Infiniti Q60
2014+	Infiniti Q50
2023+	Nissan Z

PROLOGUE:

Study these instructions completely before proceeding to assembly. The installer must have a thorough knowledge of automotive systems operation. If unfamiliar with any of the concepts outlined in this instruction, we recommend the installation be completed by a qualified professional.

WARNING!

Extreme caution should be taken when performing maintenance or performance upgrades to your vehicle. Please observe and abide by any Warning or Caution labels placed on the various components and tools used when servicing your vehicle. If you have any questions regarding installation or the various components included with the Z1 Motorsports Eccentric Bolts, consult with a Professional Mechanic, or contact Z1 Motorsports for more information.

PARTS INCLUDED:

Item	Quantity	Description
1	2	Cutting Template
Toe Bolts		
2	2	Eccentric Bolt
3	2	Eccentric Nut
4	2	Eccentric Washer
Camber Bolts		
5	2	Eccentric Bolt
6	2	Eccentric Nut
7	2	Eccentric Washer

TOOLS REQUIRED:

- Hydraulic Jack
- (2) 2-Ton (or greater) Jack Stands
- Ratchet
- Ratchet Extension(s)
- Assorted Metric Wrenches
- Assorted Metric Sockets
- Torque Wrench
- Dremel/Die Grinder
- File/Deburring Tool
- Marker

SAFETY REQUIREMENTS:

- Always wear safety glasses and any necessary protective garments. If using any fluids, chemicals, or solvents, a respirator is recommended.
- Always turn the ignition to the OFF position and disconnect the NEGATIVE battery terminal.
- Always use properly rated jack stands when working under your vehicle.
- Always keep limbs and parts away from moving drivetrain parts.
- Only operate drivetrain in safe space and well-ventilated areas.

BEFORE YOU BEGIN:

Remove contents from the Z1 Motorsports Eccentric Bolts and verify that ALL necessary hardware is present.

The length of bolts you receive will depend on your vehicle and may be different lengths.

TABLE OF CONTENTS:

TOE BOLTS:.....4

CAMBER BOLTS:.....9

TOE BOLTS:

1. Place the transmission in Park position (or in Reverse gear if equipped with a manual transmission). Apply the parking brake.
2. Locate proper jacking points on vehicle's chassis (refer to vehicle's Owner Manual). Raise and support vehicle using jack & jack stands.
3. Starting in the Rear on the Passenger Side of the vehicle, locate the Rear Lower Link Bolts. Loosen the Bolts, but do not remove them. *Figure 1.*

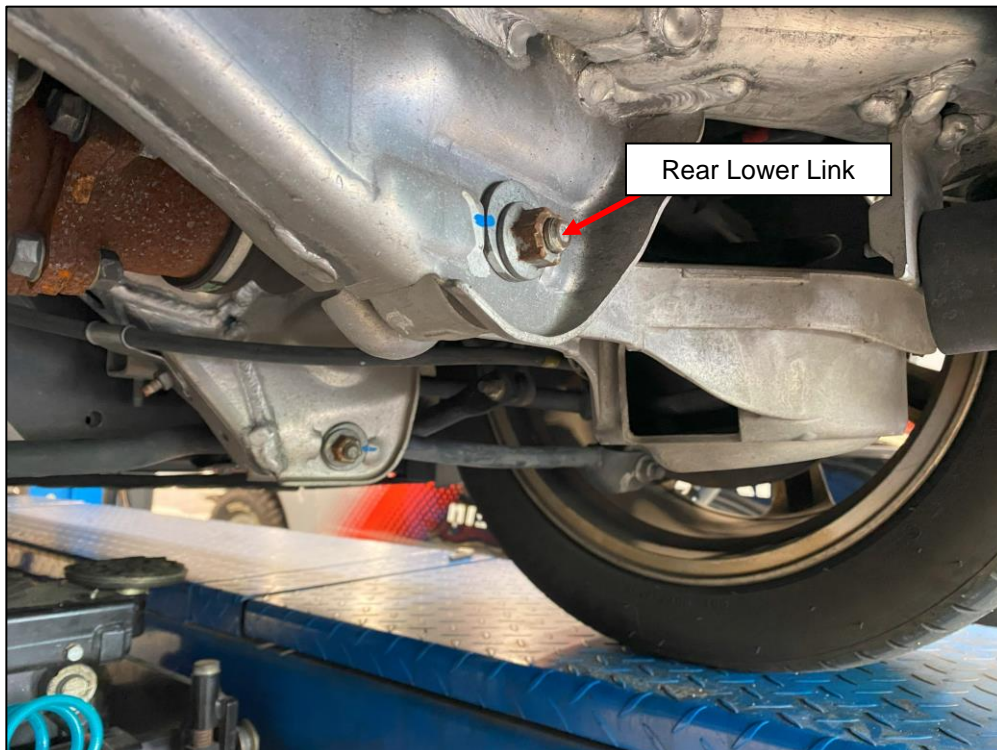
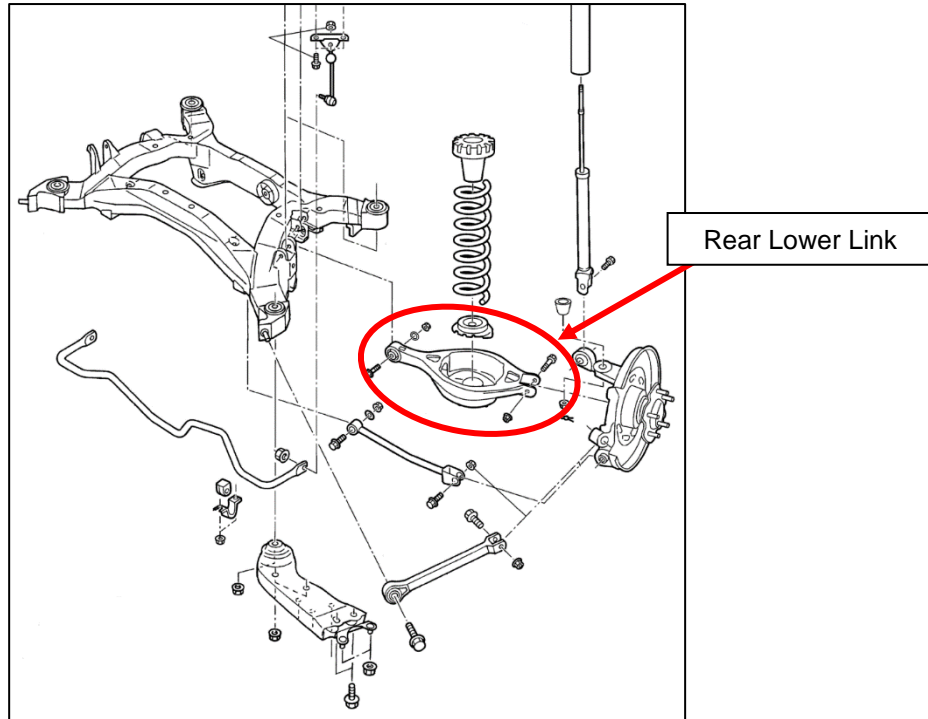


Figure 1

4. Disconnect the (4) four nuts securing the Rear Sway Bar to the chassis to allow the Sway Bar to move. *Figure 2.*

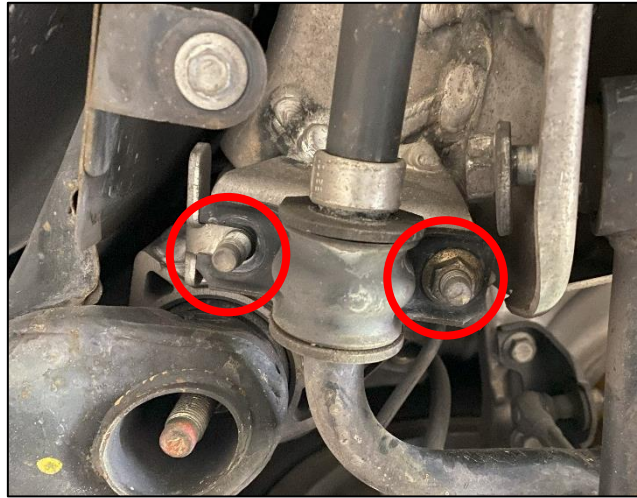


Figure 2

5. Depending on your Exhaust Setup, you may need to remove your Axle-Back to gain better access to the Eccentric Bolts.
6. Support the Rear Lower Link with a jack.
7. Remove the OE Eccentric Bolt.
8. Slowly lower the Rear Lower Link with the jack until there is room to cut the openings for the bolt. *Figure 3.*



Figure 3

9. Locate the Cutting Template. Place it in the rear slot for the OE Bolt and trace the inside of it with a marker.
Figure 4.



Figure 4

10. Remove the Locating Template and set aside. *Figure 5.*



Figure 5

11. Using a Dremel, Rotary Tool, or another cutting device, cut out to the lines marked in *Step 9. Figure 6.*



Figure 6

12. Use a file or deburring tool to clean up any sharp or rough edges.

13. Repeat *Steps 9-12* for the front slot on the Rear Lower Link. *Figure 7.*



Figure 7

14. Raise the Rear Lower Link back into position with the jack, insert the Eccentric Camber Bolt into the front slot. Attach the Eccentric Washer and Nut onto the Eccentric Bolt. Loosely secure them. *Figure 8.*

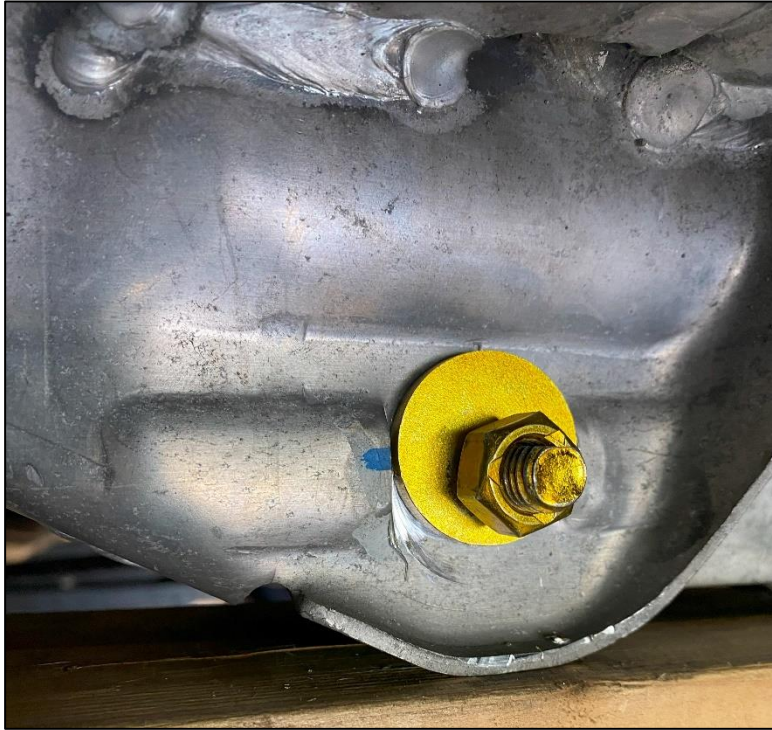


Figure 8

15. Repeat *Steps 6-14* for the other side of the vehicle.
16. If you are installing Eccentric Toe Bolts as well, install them before reinstalling any parts or performing an alignment.
17. Reinstall the (4) four nuts removed in *Step 4* to remount the Rear Sway Bar Brackets. Torque to **25-30 ft-lbs.**
18. Adjust alignment as necessary, starting with the Front Lower Link (this adjusts camber). Adjust Rear Lower Link afterwards (this adjusts toe).
19. After adjustment, tighten the Z1 Eccentric Bolts. Final torquing should be done with the vehicle on the ground.
20. Safely lower the vehicle from jack stands.
21. Torque the Z1 Eccentric Bolts to **48-59 ft-lbs.**
- NOTE:** If you have a Q50 or Q60, torque these bolts to **103 ft-lbs.**
22. Take your vehicle to an alignment shop for a precise alignment.

CAMBER BOLTS:

1. Place the transmission in Park position (or in Reverse gear if equipped with a manual transmission). Apply the parking brake.
2. Locate proper jacking points on vehicle's chassis (refer to vehicle's Owner Manual). Raise and support the vehicle using a jack and jack stands.
3. Starting in the Rear on the Passenger Side of the vehicle, locate the Front Lower Link. Loosen the Bolt, but do not remove it. *Figure 9.*

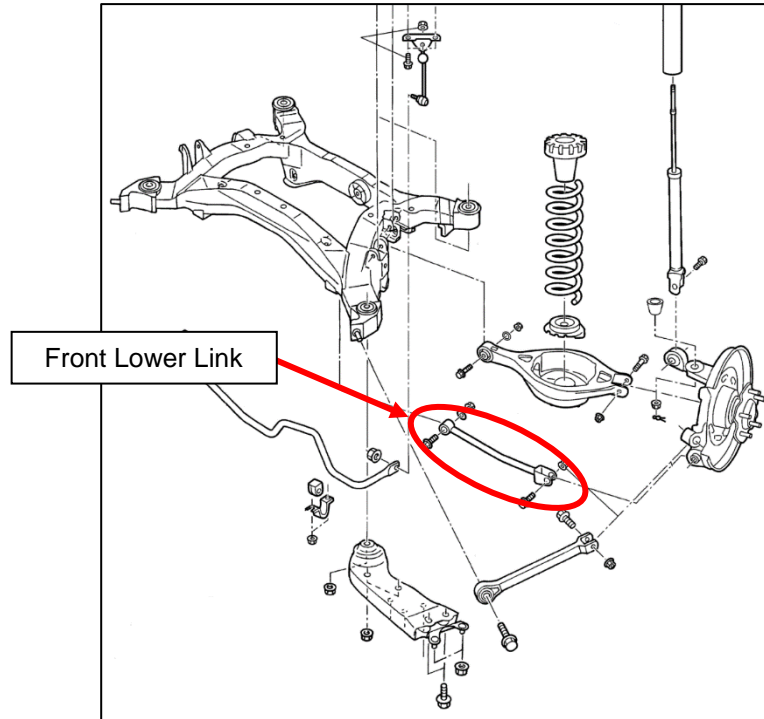


Figure 9

4. Disconnect the (4) four nuts securing the Rear Sway Bar to the chassis to allow the Sway Bar to move. *Figure 10.*



Figure 10

5. Depending on your Exhaust Setup, you may need to remove your Axle-Back to gain better access to the Eccentric Bolts.
6. Support the Front Lower Link with a jack.
7. Remove the OE Eccentric Bolt. *Figure 11.*

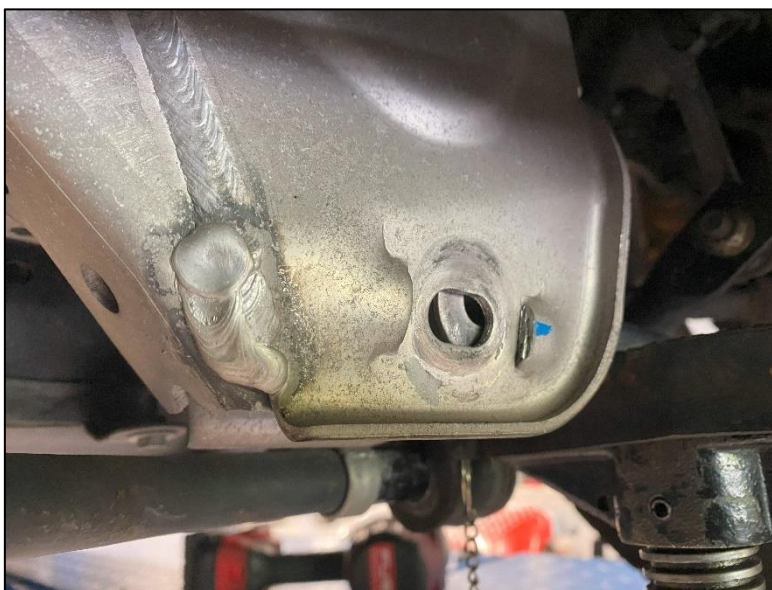


Figure 11

8. Slowly lower the Front Lower Link with the jack until there is room to cut the openings for the bolt.
9. Locate a Cutting Template. Place it in the rear slot for the OE Bolt and trace the inside of it with a marker. *Figure 12.*



Figure 12

10. Remove the Locating Template and set aside.
11. Using a Dremel, Rotary Tool, or another cutting device, cut out to the lines marked in *Step 9. Figure 13.*



Figure 13

12. Use a file or deburring tool to clean up any sharp or rough edges.
13. Repeat Steps 9-12 for the front slot on the Front Lower Link.
14. Raise the Front Lower Link back into position with the jack, insert the Eccentric Camber Bolt into the slot. Attach the Eccentric Washer and Nut onto the Eccentric Bolt. Loosely secure them. *Figure 14.*

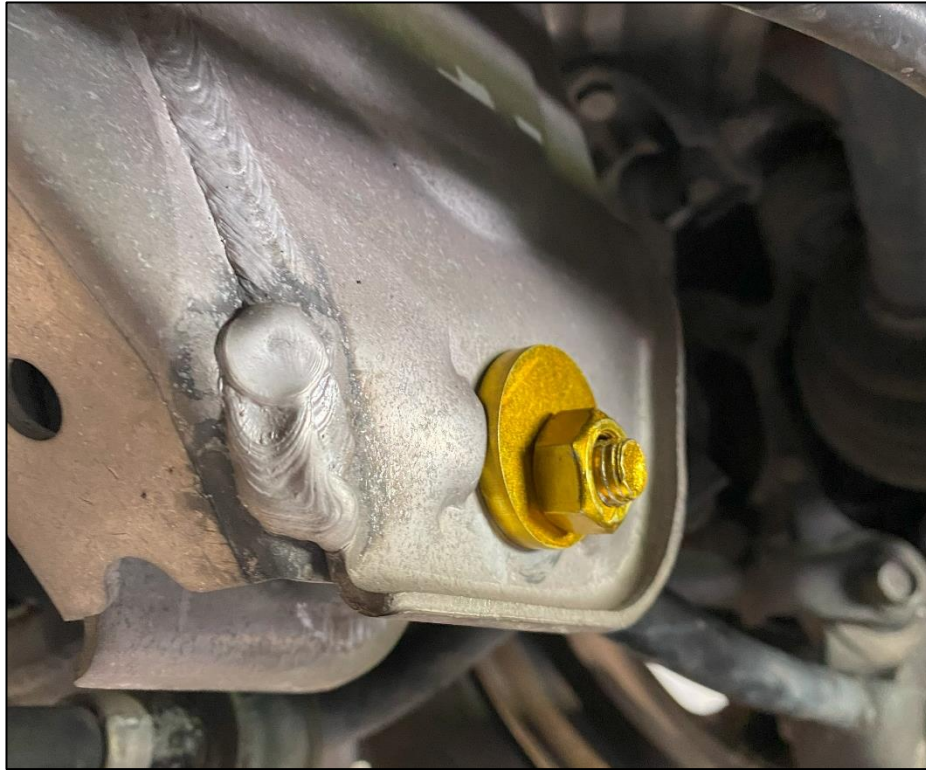


Figure 14

15. Repeat Steps 3-14 for the Driver Side of the vehicle.
16. Reinstall the (4) four nuts removed in Step 4 to remount the Rear Sway Bar Brackets. Torque to **25-30 ft-lbs.**
17. Adjust alignment as necessary, starting with the Front Lower Link (this adjusts camber). Adjust Rear Lower Link afterwards (this adjusts toe).
18. After adjustment, tighten the Z1 Eccentric Bolts. Final torquing of the bolts should be done with the vehicle on the ground.
19. Safely lower the vehicle from jack stands.
20. Torque the Z1 Eccentric Bolts to **48-59 ft-lbs.**
21. Take your vehicle to an alignment shop for a precise alignment.



Installed Z1 Eccentric Bolts

END

Additional Technical Support:
Contact Z1 Motorsports at info@z1motorsports.com
Or call 770-838-7777 between 9am and 6pm ET