

# Z1 G35X / G37X ALUMINUM UNDERSHROUD INSTALLATION MANUAL



This Installation Manual is intended for the following models:	
2007-2008	Infiniti G35X (AWD)
2008-2013	Infiniti G37X (AWD)

## PROLOGUE:

Study these instructions completely before proceeding to assembly. The installer must have a thorough knowledge of automotive systems operation. If unfamiliar with any of the concepts outlined in this instruction, we recommend the installation be completed by a qualified professional.

## WARNING!

Extreme caution should be taken when performing maintenance or performance upgrades to your vehicle. Please observe and abide by any Warning or Caution labels placed on the various components and tools used when servicing your vehicle. If you have any questions regarding installation or the various components included with the Z1 Motorsports G35X / G37X (AWD) Aluminum Undershroud, consult with a Professional Mechanic or contact Z1 Motorsports for more information.

## **PARTS INCLUDED:**

Item	Quantity	Description
1	1	Front Panel
2	1	Main Panel
3	1	Service Panel
4	18	M6 x 25mm SEMS Bolt

## **TOOLS REQUIRED:**

- Hydraulic Jack
- (2) 2-Ton (or greater) Jack Stands
- Ratchet
- 10mm Socket/Wrench

## **SAFETY REQUIREMENTS:**

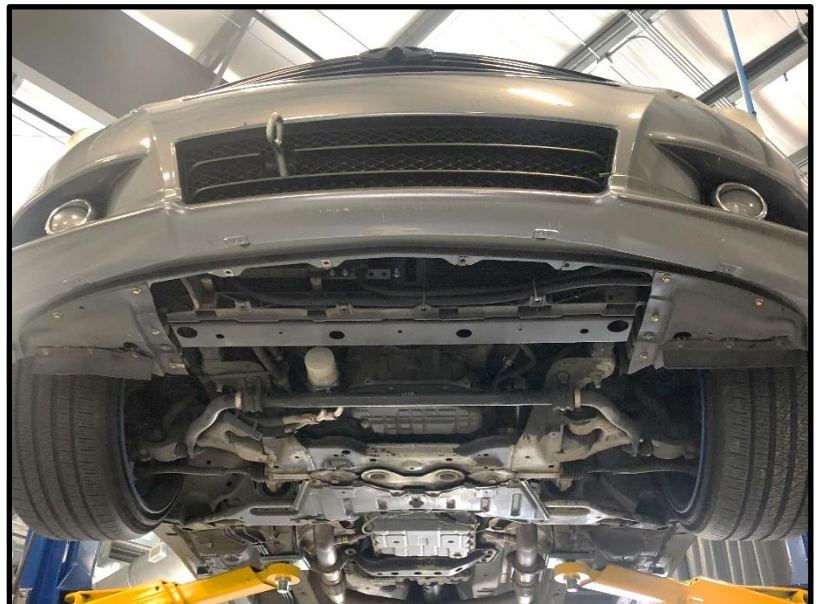
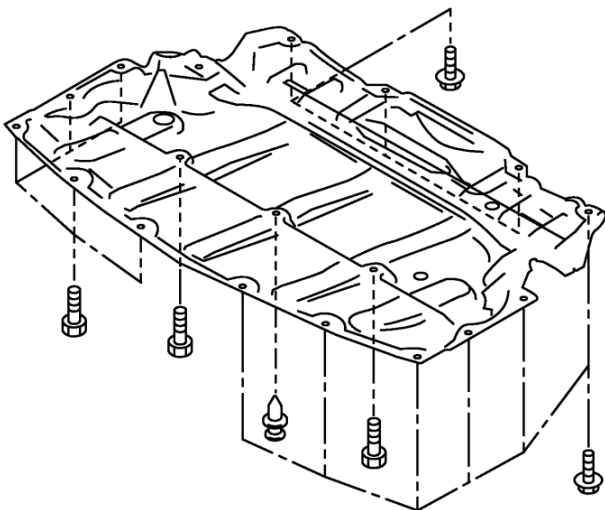
- Always wear safety glasses and any necessary protective garments. If using any fluids, chemicals, or solvents, a respirator is recommended.
- Always turn the ignition to the OFF position and disconnect the NEGATIVE battery terminal.
- Always use properly rated jack stands when working under your vehicle.
- Always keep limbs and parts away from moving drivetrain parts.
- Only operate drivetrain in safe space and well-ventilated areas.

## **BEFORE YOU BEGIN:**

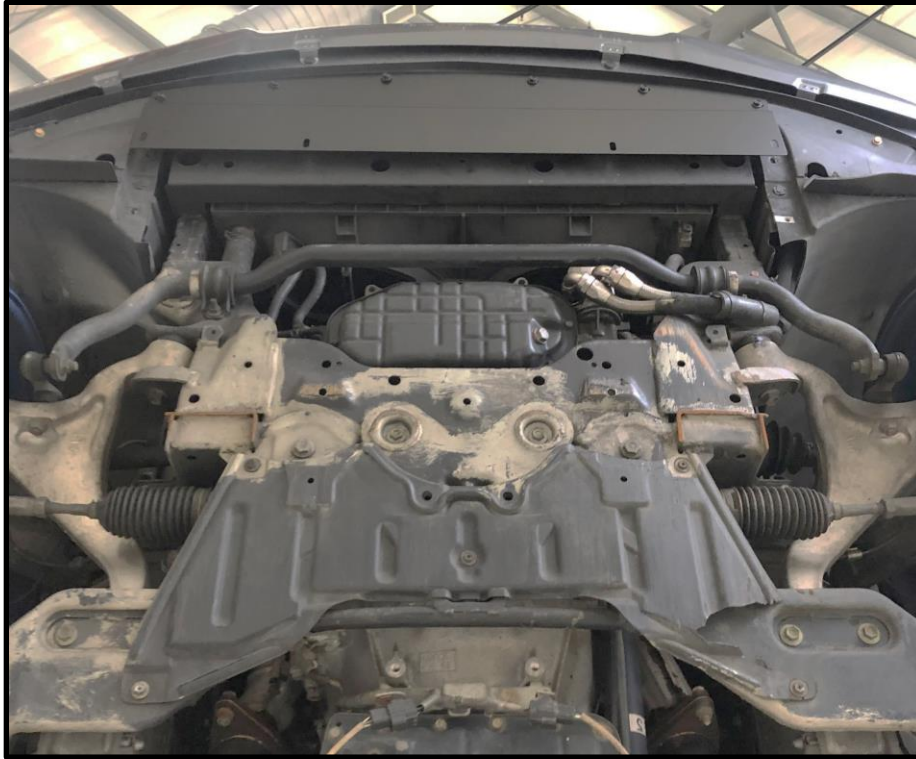
Remove contents from the Z1 Motorsports G35X / G37X (AWD) Aluminum Undershroud and verify that ALL necessary hardware is present.

## **PROCEDURE:**

1. Place the transmission in Park position (or in Reverse gear if equipped with a manual transmission). Apply the parking brake.
2. Locate proper jacking points on vehicle's chassis (refer to vehicle's Owner Manual). Raise and support vehicle using jack & jack stands.
3. Remove factory undershroud by removing the (16) bolts and (1) push-clip securing it to the vehicle.

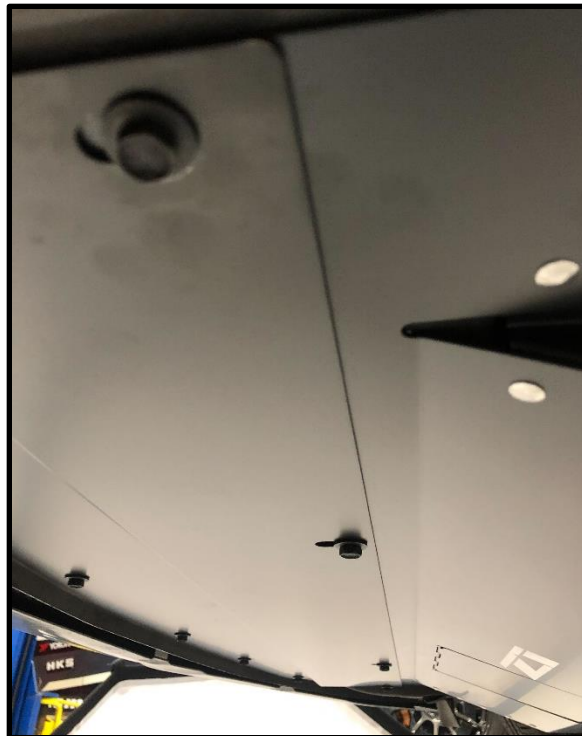


4. Locate the Z1 Undershroud front panel. Loosely secure the front panel to the bottom of the front bumper with (6) M6 SEMS bolts in the front mounting holes (as shown).



Note: Leave all bolts loosely threaded until each panel is installed. This will make installation easier.

5. Locate the Z1 Undershroud main panel. Slot the main panel in between the rear of the front panel and the radiator core support. Secure with (2) M6 SEMS bolts in the two center mounting holes.



6. Secure rest of front and main panels to vehicle using (8) M6 SEMS bolts.

7. Locate service panel. The service panel has (3) slots on the end to attach to the main panel. Install service panel into main panel and secure with (2) M6 SEMS bolts.
8. Once all panels are in place, tighten all hardware securing the undershroud to vehicle.
9. Assure all bolts are securely tightened. Inspect vehicle for loose components or issues.
10. Lower vehicle from jack stands.
11. Perform a final test drive of the vehicle.

Completed installed of the G35X / G37X Aluminum Undershroud should look as shown below:



**END**

**Additional Technical Support:**  
Contact Z1 Motorsports at [info@z1motorsports.com](mailto:info@z1motorsports.com)  
Or call 770-838-7777 between 9am and 6pm ET