

# Z1 G35 COLD AIR INTAKE (AIRBOX) INSTALLATION MANUAL



This Installation Manual is intended for the following models:

2003-2006	G35 Sedan
2003-2007	G35 Coupe

## PROLOGUE:

Study these instructions completely before proceeding to assembly. The installer must have a thorough knowledge of automotive systems operation. If unfamiliar with any of the concepts outlined in this instruction, we recommend the installation be completed by a qualified professional.

## WARNING!

Extreme caution should be taken when performing maintenance or performance upgrades to your vehicle. Please observe and abide by any Warning or Caution labels placed on the various components and tools used when servicing your vehicle. If you have any questions regarding installation or the various components included with the Z1 Motorsports G35 Cold Air Intake, consult with a Professional Mechanic or contact Z1 Motorsports for more information.

## **PARTS INCLUDED:**

Item	Quantity	Description
1	1	Intake Tube
2	1	Intake Airbox
3	1	Intake Cone Filter
4	2	Intake Airbox Stub
5	1	Intake Airbox Bracket, Right
6	1	Intake Airbox Bracket, Left
7	1	Intake Tube Bracket
8	1	Intake Throttle Body Coupler
9	1	Z1 Aluminum Badge
10	1	MAF Gasket
11	1	MAF Flange
12	3	M6 x 12mm Screw
13	3	Hoseclamp
14	2	M4 x 14mm Screw

## **TOOLS REQUIRED:**

- Ratchet
- Ratchet Extension(s)
- Assorted Metric Socket/Wrenches
- Pliers
- Flat-head Screwdriver
- Phillips-head Screwdriver

## **SAFETY REQUIREMENTS:**

- Always wear safety glasses and any necessary protective garments. If using any fluids, chemicals, or solvents, a respirator is recommended.
- Always turn the ignition to the OFF position and disconnect the NEGATIVE battery terminal.
- Always use properly rated jack stands when working under your vehicle.
- Always keep limbs and parts away from moving drivetrain parts.
- Only operate drivetrain in safe space and well-ventilated areas.

## **BEFORE YOU BEGIN:**

Remove contents from the Z1 Motorsports G35 Cold Air Intake and verify that ALL necessary hardware is present.

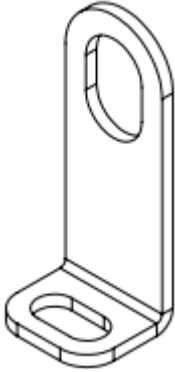
## **PROCEDURE:**

1. Place the transmission in Park position (or in Reverse gear if equipped with a manual transmission). Apply the parking brake.
2. Unlatch and raise vehicle's hood. Apply hood prop.
3. If equipped, remove engine cover.

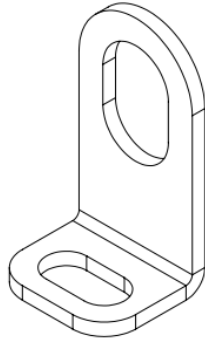


11. Locate the Z1 airbox, airbox stubs (they look like door stoppers), both L-shaped airbox brackets, and (2) M6 x 12mm screws.

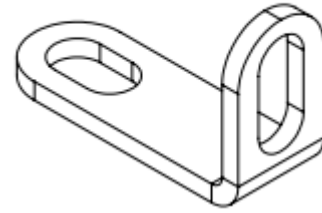
Long Airbox Bracket, Driver



Short Airbox Bracket, Passenger



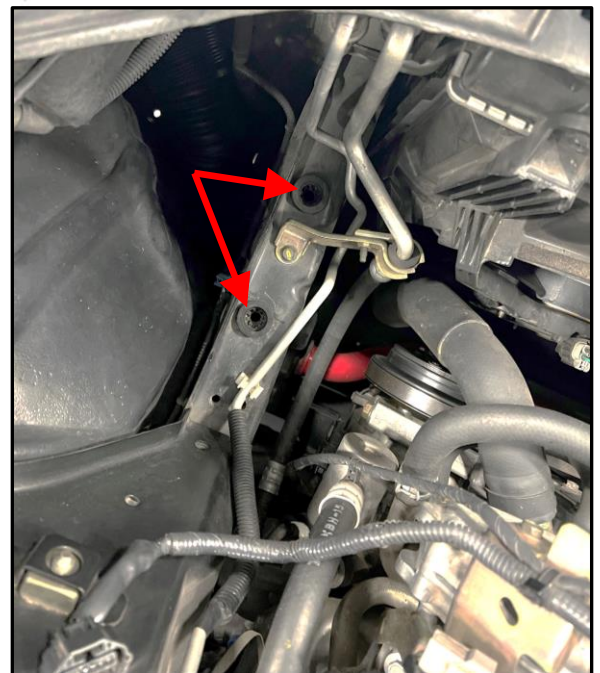
Intake Tube Bracket



12. Install the stubs into the threaded holes on the bottom of the Z1 airbox (as shown below).
13. Using (2) M6 screws, install the L-shaped brackets onto the sides of the large air duct inlet with the longer of the (2) brackets on the left (driver) side (shorter bracket is shown in image below).



14. Install the Z1 airbox into vehicle making sure the studs on the bottom of the airbox seat onto the grommets on the vehicle (grommets shown at right).
15. Secure the air duct inlet brackets to the radiator core support using the (2) plastic push clips that were remove in step # 4.
16. Locate the Z1 intake tube, filter, silicone throttle body coupler, (2) hoseclamps, rubber MAF gasket, MAF flange, and (2) M4 screws.



17. Attach the filter to the end of the intake tube and secure with the supplied clamp (as shown below).

18. With a clamp on each end, attach silicone throttle body coupler to intake tube (as shown below).



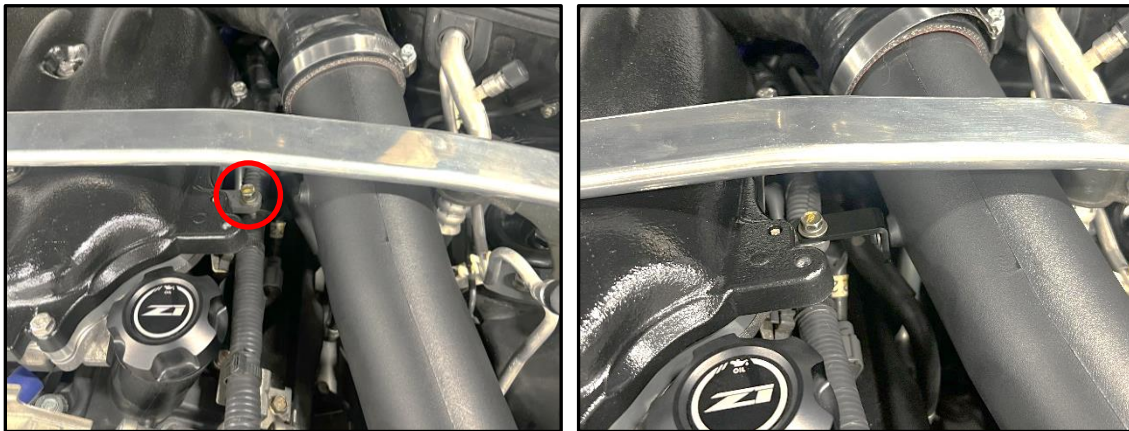
19. Remove the (2) screws securing the MAF sensor to the OEM MAF housing and transfer sensor to the Z1 intake tube. Make sure to use the rubber MAF gasket, MAF flange, and the (2) supplied M4 screws.

20. Install assembled intake tube into airbox, making sure the rubber lip on the filter seats on the large opening of the airbox.

21. Attach the PCV hose that was removed from the OEM intake in step # 8 to the port on the Z1 intake tube.

22. Install Z1 throttle body coupler onto the throttle body, then tighten the clamp.

23. The intake tube has an optional L-bracket that can be attached to the engine if desired. This bracket is not necessary when utilizing the air box and was mainly designed for use when just utilizing the filter and intake tube, however it can still be attached if desired. Remove the bolt circled in the image below and position the L-bracket in place. Secure with the provided M6 screw and washer to the intake tube and with the OEM bolt to the engine (as shown below). You may need to loosen the hose clamps on the plastic intake tube and rotate it for a perfect fit, make sure to retighten the hose clamps after.



24. Reconnect MAF electrical connector to MAF sensor.

25. Locate Z1 Badge. Peel the paper off the back and neatly place into the slot on the Z1 airbox.

26. Inspect vehicle for loose tools/items.

27. Lower hood of vehicle.

28. Perform a final test drive of vehicle.

**END**

**Additional Technical Support:**  
Contact Z1 Motorsports at [info@z1motorsports.com](mailto:info@z1motorsports.com)  
Or call 770-838-7777 between 9am and 6pm ET