

Z1 PHONE MOUNT INSTALLATION MANUAL



This Installation Manual is intended for the following models:	
2008-2013	Infiniti G37 Coupe
2009-2013	Infiniti G37 Sedan
2014-2015	Infiniti Q60 Coupe
2015	Infiniti Q40 Sedan

PROLOGUE:

Study these instructions completely before proceeding to assembly. The installer must have a thorough knowledge of automotive systems operation, safety, and sound maintenance practices. If unfamiliar with any of the concepts outlined in this instruction, we recommend the installation be completed by a qualified professional.

WARNING!

Extreme caution should be taken when performing maintenance or performance upgrades to your vehicle. Please observe and abide by any Warning or Caution labels placed on the various components and tools used when servicing your vehicle. If you have any questions regarding installation or the various components included with the Z1 Motorsports Phone Mount Kit, consult with a Professional Mechanic, or contact Z1 Motorsports for more information.

PARTS INCLUDED:

Item	Quantity	Description
1	1	Mount Bracket, Phone
2	1	Phone Mount, Magnetic
3	1	Ball Mount, 17mm, Magnetic
4	1	Allen Wrench
5	1	Mounting Plate, Adhesive
6	1	Charging Cable (Optional)

TOOLS REQUIRED:

- Plastic Trim Removal Tool
- Philips Head Screwdriver
- Isopropyl Alcohol

SAFETY REQUIREMENTS:

- Always wear safety glasses and any necessary protective garments. If using any fluids, chemicals, or solvents, a respirator is recommended.
- Remove jewelry.
- Always turn the ignition to the OFF position and disconnect/secure the **NEGATIVE** battery terminal.
- Always keep limbs and parts away from moving drivetrain parts.
- Only operate drivetrain in safe space and well-ventilated areas.

BEFORE YOU BEGIN:

Remove contents from the Z1 Motorsports Phone Mount Box and verify that **ALL** necessary hardware/parts are present.

PROCEDURE:

Magnetic Base Assembly:

1. Place the transmission in Park position (or in Reverse gear if equipped with a manual transmission). Apply the parking brake.
2. Locate the Swivel Ball Mount and Ball Mount Cup. Install onto the Z1 Magnetic Base and tighten by hand. *Figure 1.*

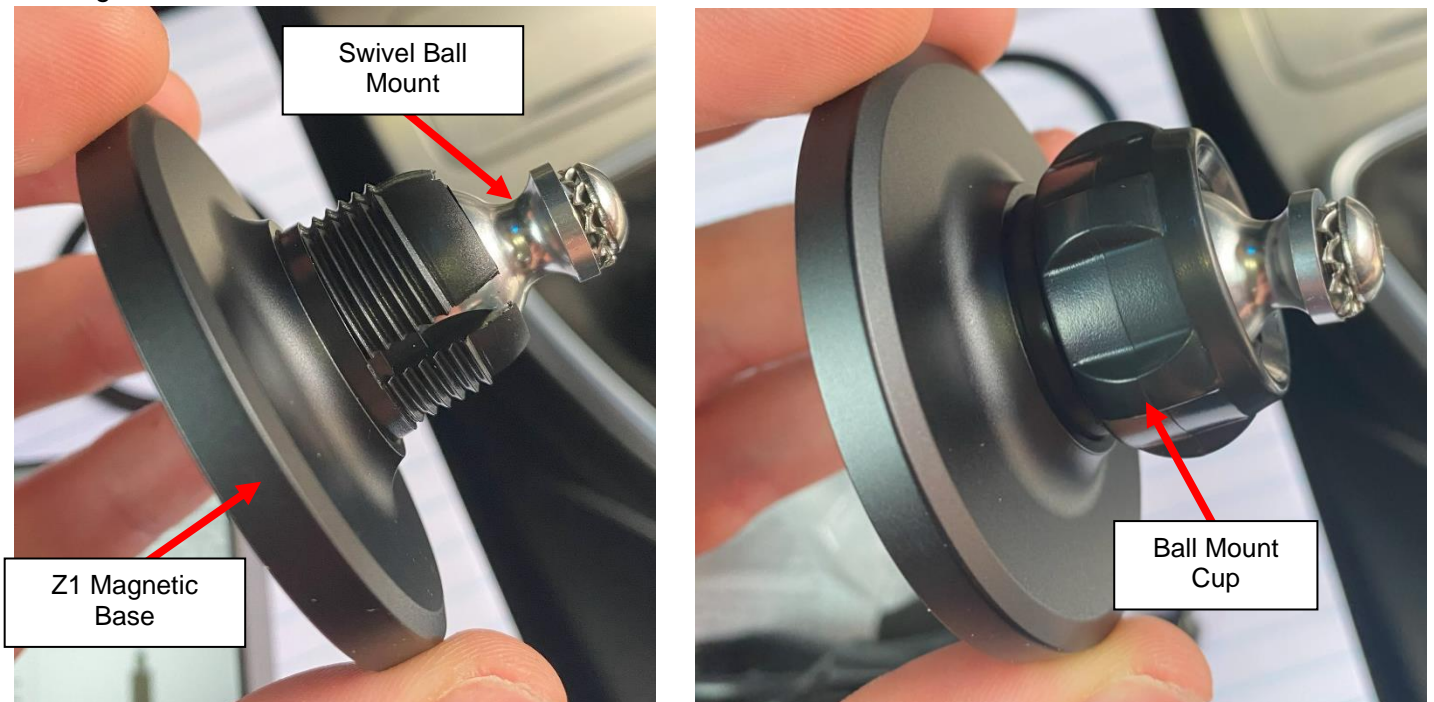


Figure 1

3. Remove the Allen Head Screw and Star Washer from the Swivel Ball Mount.
4. Using the provided Allen Wrench, secure the Phone Mount Bracket to the Magnetic Swivel Ball using the Hardware removed in Step 3. *Figure 2.*

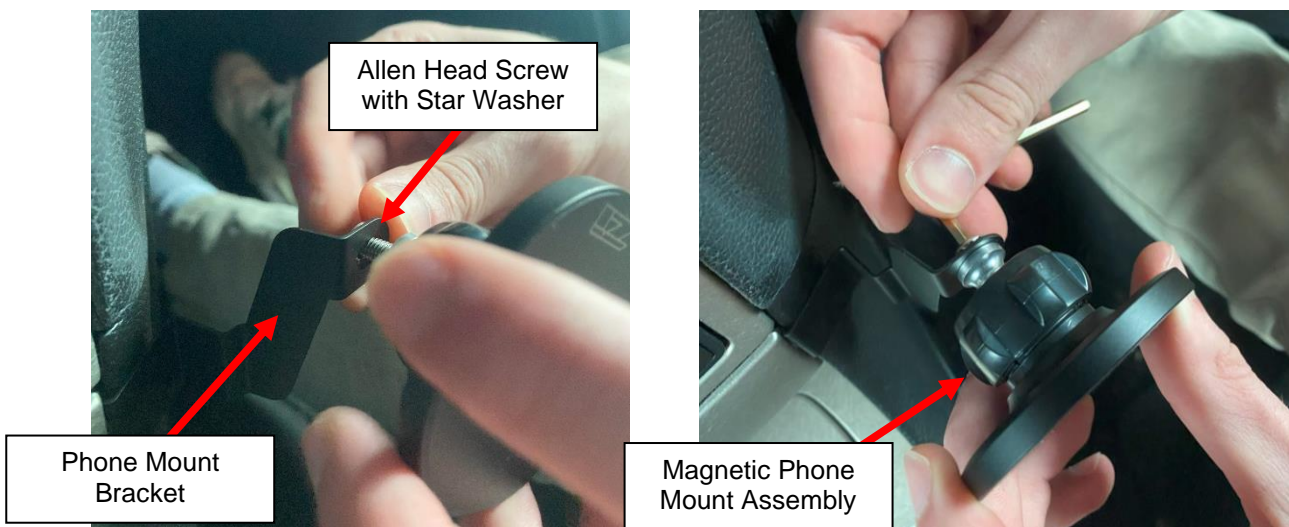


Figure 2

NOTE: Installation and removal of center console trim varies between Coupe and Sedan, and Automatic and Manual.

Automatic Sedan Installation:

1. Set parking brake, and place shifter into (N) Neutral.
2. Pull down on the shift boot finisher, release the shift knob clip and remove the shift knob. *Figure 3.*



Figure 3

3. Using a plastic trim tool, pry upwards on the center console. Once loose, move the console back to reveal the control panel lower mounting screws.
4. Remove the (2) two lower control panel screws with a Philips head screwdriver. *Figure 4.*



Figure 4

5. Once control panel is loose, remove the top right mounting screw using a Philips head screwdriver. *Figure 5.*



Figure 5

6. With the Z1 Phone Mount, and the screw removed in *Step 5*, install the Phone Mount into the top right screw location as shown below. *Figure 6.*



Figure 6

7. Reinstall the Control Panel and Center Console in reverse order as described in *Steps 2-4.*
8. Place vehicle into (P) Park.
9. If you opted for wireless charging, plug in the provided USB Cable.

Automatic Coupe Installation:

1. Place vehicle into (P) Park.
2. Using a plastic trim removal tool, pry on each side of the lower control panel bezel and remove to reveal the lower mounting screws. *Figure 7.*



Figure 7

3. Remove the (2) two lower control panel screws with a Philips head screwdriver. *Figure 8.*



Figure 8

- Once the lower mounting screws are removed, and the control panel is loose, move the control panel down to reveal the top right mounting screw. Remove this screw with a Philips head screwdriver. *Figure 9*,



Figure 9

- With the Z1 Phone Mount, and the screw removed in *Step 4*, install the Phone Mount into the top right screw location as shown below. *Figure 10*.



Figure 10

- Reinstall the control panel in reverse order as described in *Steps 2-4*.
- If you opted for wireless charging, plug in the provided USB Cable.

Manual G37 Installation:

1. Apply the Parking brake and shift car into Neutral.
2. Remove the shift knob. *Figure 11.*



Figure 11

3. Using a trim removal tool, pry up on the shift boot bezel until loose. *Figure 12.*
4. Using a trim removal tool, pry up on the lower center console trim until loose. This will reveal top right mounting screw, as seen below. *Figure 12.*



Figure 12

- Using a Philips head screwdriver, remove the top right screw. *Figure 13.*



Figure 13

- With the Z1 Phone Mount, and the screw removed in *Step 5*, install the Phone Mount into the top right screw location as shown below.

NOTE: The Figure below shows only the Mounting Bracket being installed. *Figure 14.*



Figure 14

- Reinstall the center console trim, shift boot bezel, and shift knob in reverse order of *Steps 2-4*.
- If you opted for wireless charging, plug in the provided USB Cable.

Phone Backing Plate Installation:

1. Clean the back of your phone with Isopropyl Alcohol. Allow it to dry for 10 minutes.

NOTE: It's recommended to apply the Phone Backing Plate in a warm environment to promote maximum adhesion.

2. Locate the Phone Backing Plate, remove the application backing tape and apply firmly to the desired location on phone. *Figure 15.*



Figure 15

3. Attach phone to Z1 Phone Mount. *Figure 16.*



Figure 16

END

Additional Technical Support:

Contact Z1 Motorsports at info@z1motorsports.com

Or call 770-838-7777 between 9am and 6pm ET