

Z1 HR/VHR BAFFLED ALUMINUM OIL PAN INSTALLATION MANUAL



This Installation Manual is intended for the following models:

2007-2008	Nissan 350Z (HR)
2009-2020	Nissan 370Z
2007-2008	Infiniti G35 Sedan (HR)
2009-2015	Infiniti G37 Sedan
2008-2015	Infiniti G37 Coupe
2014-2015	Infiniti Q50 (VHR)
2014-2016	Infiniti Q60 (VHR)

PROLOGUE:

Study these instructions completely before proceeding to assembly. The installer must have a thorough knowledge of automotive systems operation. If unfamiliar with any of the concepts outlined in this instruction, we recommend the installation be completed by a qualified professional.

WARNING!

Extreme caution should be taken when performing maintenance or performance upgrades to your vehicle. Please observe and abide by any Warning or Caution labels placed on the various components and tools used when servicing your vehicle. If you have any questions regarding installation or the various components included with the Z1 Motorsports HR/VHR Baffled Aluminum Oil Pan, consult with a Professional Mechanic or contact Z1 Motorsports for more information.

PARTS INCLUDED:

Item	Quantity	Description
1	1	Z1 Baffled Aluminum Oil Pan
2	1	Oil Pan Pickup Spacer
3	2	O-ring for Pickup Spacer
4	1	RTV, Oil Pan Sealant
5	1	1/8" NPT Plug
6	2	1/2" NPT Plug
7	10	M6 x 16mm Flanged Bolt
8	2	M8 x 35mm Flanged Bolt

TOOLS REQUIRED:

- Hydraulic Jack
- (2) 2-Ton (or greater) Jack Stands
- Ratchet
- Ratchet Extension(s)
- 10mm Socket/Wrench
- 13mm Socket/Wrench
- Scraper/Razor Blade
- Oil Drain Pan

SAFETY REQUIREMENTS:

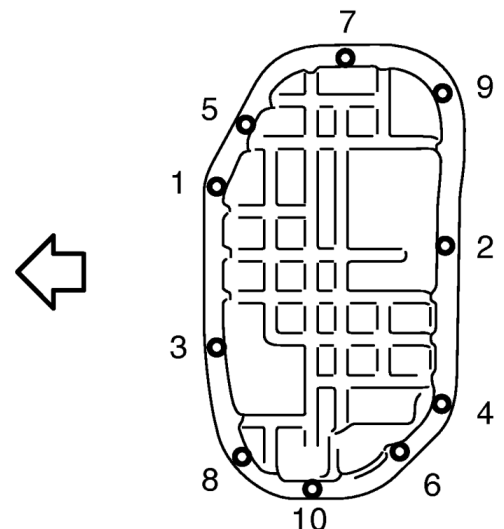
- Always wear safety glasses and any necessary protective garments. If using any fluids, chemicals, or solvents, a respirator is recommended.
- Always turn the ignition to the OFF position and disconnect the NEGATIVE battery terminal.
- Always use properly rated jack stands when working under your vehicle.
- Always keep limbs and parts away from moving drivetrain parts.
- Only operate drivetrain in safe space and well-ventilated areas.

BEFORE YOU BEGIN:

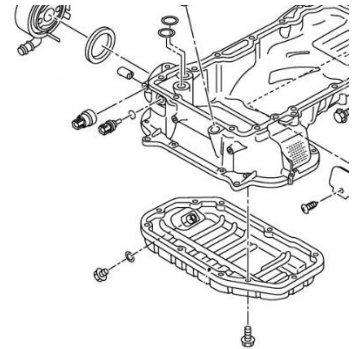
Remove contents from the Z1 Motorsports HR/VHR Baffled Aluminum Oil Pan Kit and verify that ALL necessary hardware is present.

PROCEDURE:

1. Place the transmission in Park position (or in Reverse gear if equipped with a manual transmission). Apply the parking brake.
2. Locate proper jacking points on vehicle's chassis (refer to vehicle's Owner Manual). Raise and support vehicle using jack & jack stands.
3. Remove engine undershroud/undercover.
4. Remove drain plug from engine oil pan and drain oil into proper container.
5. Loosen (10) mounting bolts on engine oil pan in reverse order as show in image at right (starting with 10, 9, etc.).
6. Remove mounting bolts.

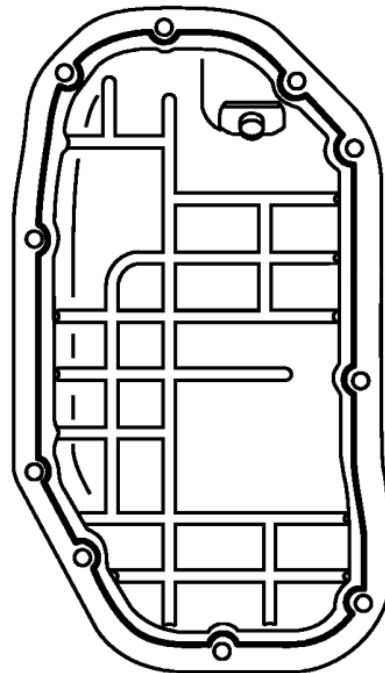


7. Carefully remove engine oil pan from engine.
8. Use a scraper to remove old liquid gasket from mating surface, bolt holes, and bolt threads on engine.



Note: Be careful not to scratch or damage the mating surface when cleaning off old liquid gasket.

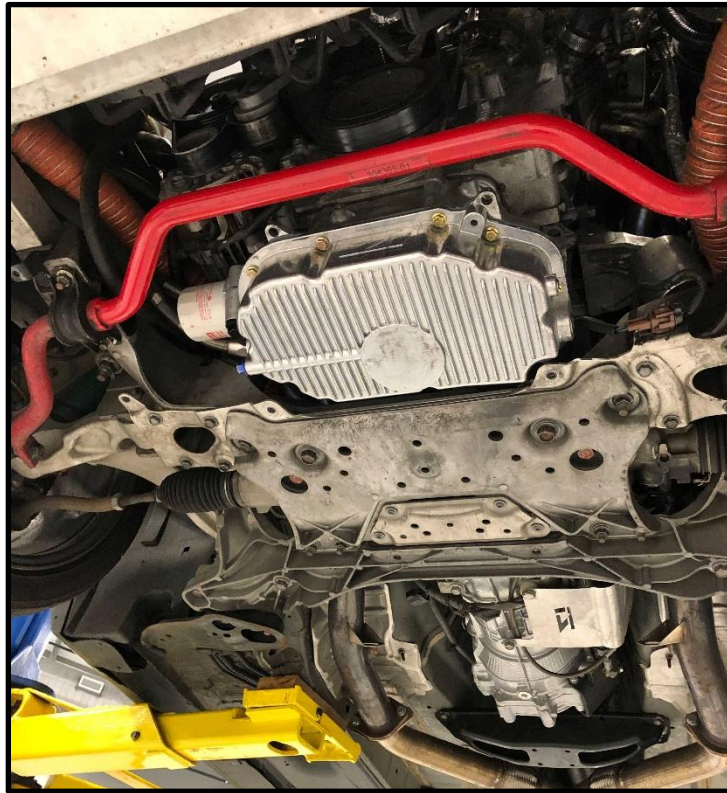
9. Remove (2) bolts securing oil pick-up tube to oil pump (circled above). Remove oil pick-up tube.
10. Locate Z1 Oil Pick-Up Spacer, (2) O-rings, (2) M8 x 35mm bolts. Place an O-ring in the groove on each side of the spacer (as shown).
11. Locate Z1 Baffled Aluminum Oil Pan. If you are not going to be using the 1/2" NPT or 1/8" NPT ports on the oil pan, locate (2) 1/2" NPT plugs and (1) 1/8" NPT plug.
12. Apply Teflon tape to plugs and install into oil pan.
13. Place the oil pick-up spacer between the oil pick-up tube and oil pump. Secure to engine with (2) M8 x 35mm bolts (as shown below). Torque bolts to 16ft-lbs.
14. Apply a continuous bead, ~4-5mm thick, of liquid RTV (supplied) to the Z1 Baffled Aluminum Oil Pan as shown in diagram below.



15. Position oil pan on bottom of engine. Loosely thread in (10) supplied M6 mounting bolts.
- 16. Tighten mounting bolts in numerical order as shown in image on pg. 2. Torque bolts to 61in-lbs (5.1ft-lbs).**
17. Install drain plug in Z1 Baffled Aluminum Oil Pan.

18. Wait at least 30 minutes after oil pan is installed, then refill engine with oil.

19. Completed installation of the Z1 HR/VHR Baffled Aluminum Oil Pan should look as shown:



20. Reinstall engine undershroud.

21. Inspect vehicle for loose tools/items

22. Start vehicle. While at idle, check for leaks or faulty operation of Z1 Baffled Aluminum Oil Pan.

23. Properly Lower vehicles from jack stands.

24. Perform a final test drive of vehicle.

END

Additional Technical Support:

Contact Z1 Motorsports at

info@z1motorsports.com

Or call 770-838-7777 between 9am and 6pm ET