

Z1 Q50 / Q60 3.0T COLD AIR INTAKE SYSTEM INSTALLATION MANUAL



This Installation Manual is intended for the following models:	
2016+	Infiniti Q50 3.0T
2017+	Infiniti Q60 3.0T

PROLOGUE:

Study these instructions completely before proceeding to assembly. The installer must have a thorough knowledge of automotive systems operation. If unfamiliar with any of the concepts outlined in this instruction, we recommend the installation be completed by a qualified professional.

WARNING!

Extreme caution should be taken when performing maintenance or performance upgrades to your vehicle. Please observe and abide by any Warning or Caution labels placed on the various components and tools used when servicing your vehicle. If you have any questions regarding installation or the various components included with the Z1 Motorsports Q50 / Q60 3.0T Cold Air Intake System, consult with a Professional Mechanic or contact Z1 Motorsports for more information.

PARTS INCLUDED:

Item	Quantity	Description
1	1	Intake Air Box, Driver
2	1	Intake Gasket, Driver
3	1	Air Box Bracket, Driver
4	1	Intake Tube, Driver
5	1	Intake Air Box, Passenger
6	1	Intake Gasket, Passenger
7	1	Air Box Bracket, Passenger
8	1	Intake Tube, Passenger
9	2	MAF Adapter Plate
10	2	Intake Air Filter
11	4	Isolating Mount, Rubber, M6
12	4	Isolating Mount Insert, M6
13	4	SEMS Screw, M6x12mm – Brackets to Boxes
14	4	Screw, M6x20mm - MAF to MAF Adapter Plates
15	4	M6 Flanged Nyloc Nut - MAF to MAF Adapter Plates
16	4	Large Worm Drive Hose Clamp, Filter to MAF, Inlet to MAF
17	2	Small Worm Drive Hose Clamp, Inlet to Turbo
18	1	Pinch Hose Clamp, PCV Hose Adapter to Inlet

TOOLS REQUIRED:

- Hydraulic Jack
- (2) 2-Ton (or greater) Jack Stands
- Ratchet
- Ratchet Extension(s)
- 10mm Socket/Wrench
- 8mm Nut Driver
- Needle Nose Pliers
- Flat-head Screwdriver

SAFETY REQUIREMENTS:

- Always wear safety glasses and any necessary protective garments. If using any fluids, chemicals, or solvents, a respirator is recommended.
- Always turn the ignition to the OFF position and disconnect the NEGATIVE battery terminal.
- Always use properly rated jack stands when working under your vehicle.
- Always keep limbs and parts away from moving drivetrain parts.
- Only operate drivetrain in safe space and well-ventilated areas.

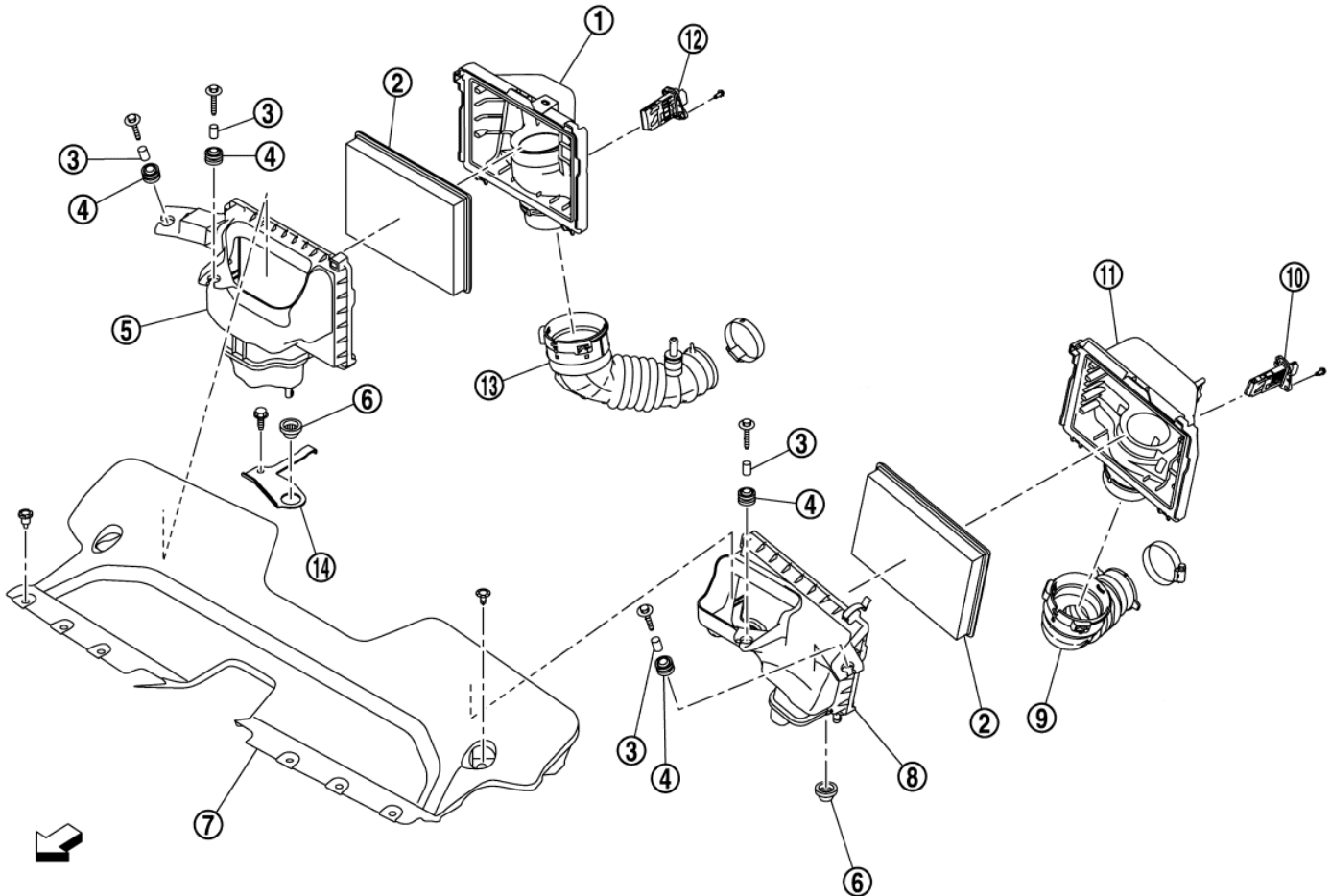
BEFORE YOU BEGIN:

Remove contents from the Z1 Motorsports Q50 / Q60 3.0T Cold Air Intake System and verify that ALL necessary hardware is present.

PROCEDURE:

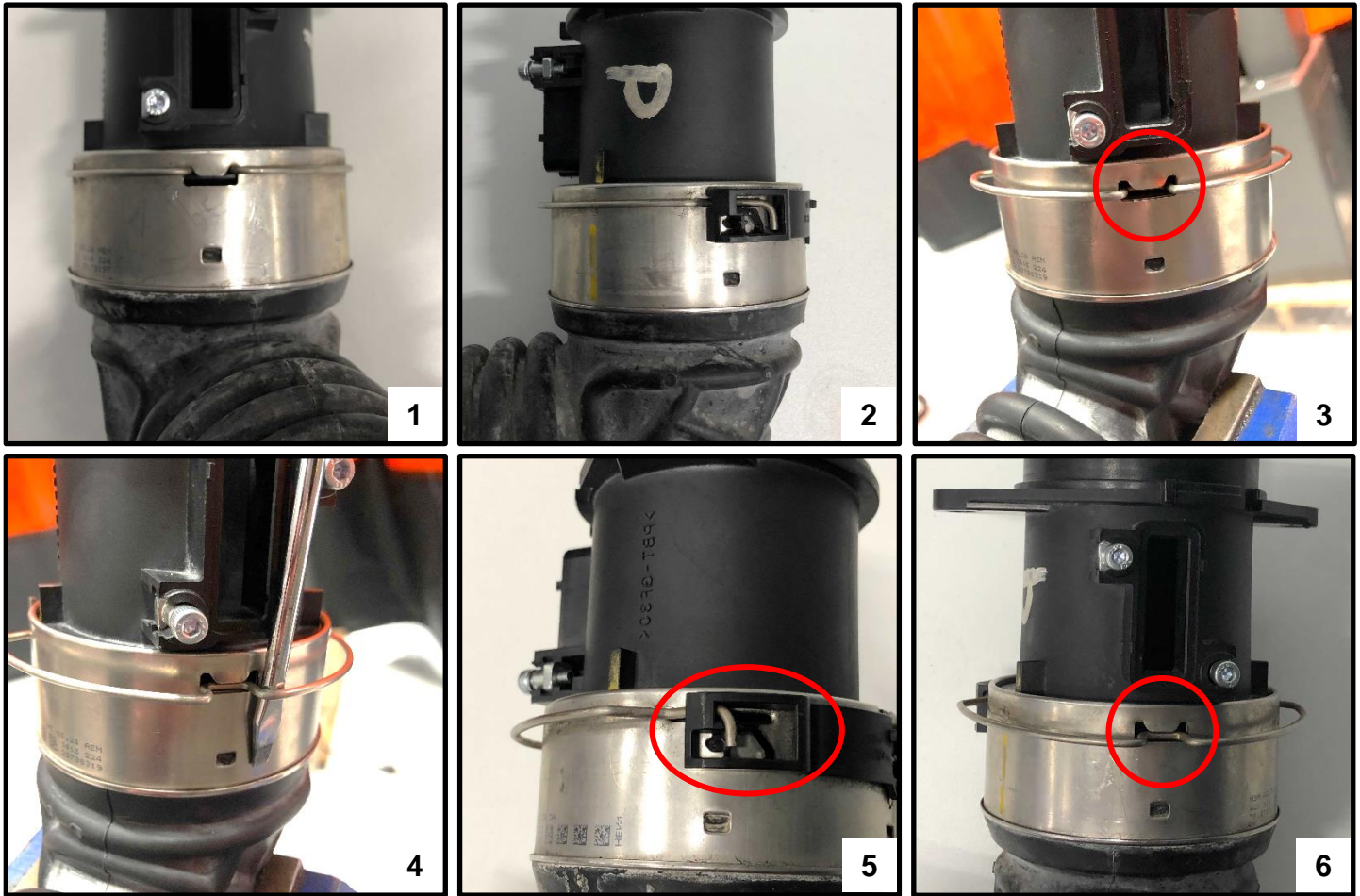
1. Place the transmission in Park position (or in Reverse gear if equipped with a manual transmission). Apply the parking brake.
2. Locate proper jacking points on vehicle's chassis (refer to vehicle's Owner Manual). Raise and support vehicle using jack & jack stands.
3. Unlatch and raise vehicle's hood. Apply hood prop.

Refer to the diagram below for the following steps:



4. Remove (8) plastic pop clips securing air duct (#7) to vehicle. Remove the air duct and set aside.
5. Disconnect the electrical connector at the back of each air box cover (#1 & #11) connecting to the MAF sensor (#10 & #12). Unclip MAF sensor harness from OEM air box(#1 & #11).
6. Remove (2) screws from each intake air box bracket attached to each air box (#5 & #8). Retain the screws as they will be reused later.
7. Disconnect clamps where each MAF housing on the back of the air box covers (#1 & #11) connects to each turbo inlet tube (#9 & #13). The OEM inlet tube uses a unique clamp and requires you to "unseat" it in three locations using a flat-head screwdriver (shown below).

Note: Pictures 1 & 2 show the clamp in the “closed” position. To disconnect, press the inlet tube towards the MAF housing, this will move the retention clip down as shown in picture 3. Then, using a flat-head screwdriver gently pry both sides of the clip outwards, as shown in picture 4. This will slide the ends of the clip into their “open” position, as shown in picture 5. Once the retention clip is in the open position (picture 6), remove the MAF housing. The pictures shown below are just the inlet tube and MAF housing and were taken off the car to better show how the clamp functions.

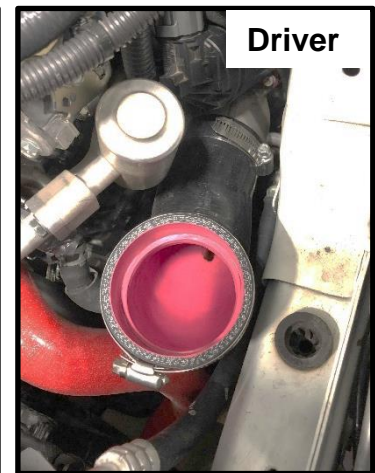
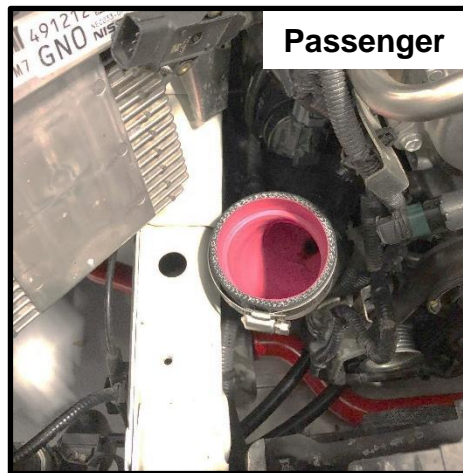
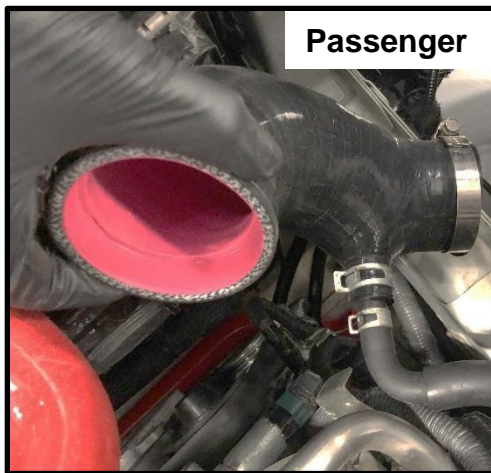


8. Once the clamps are removed/unseated, carefully pull up on each air box and remove them from the vehicle.
9. Remove the (2) mounting screws connecting the MAF sensor housing to the OEM air box. Set MAF aside.
10. Remove the mounting screw and OEM air box support bracket (#14).
11. Loosen each clamp where turbo inlet tube connects to turbo. These clamps can be hard to reach, you may have to use a combination of extensions and/or a swivel socket.

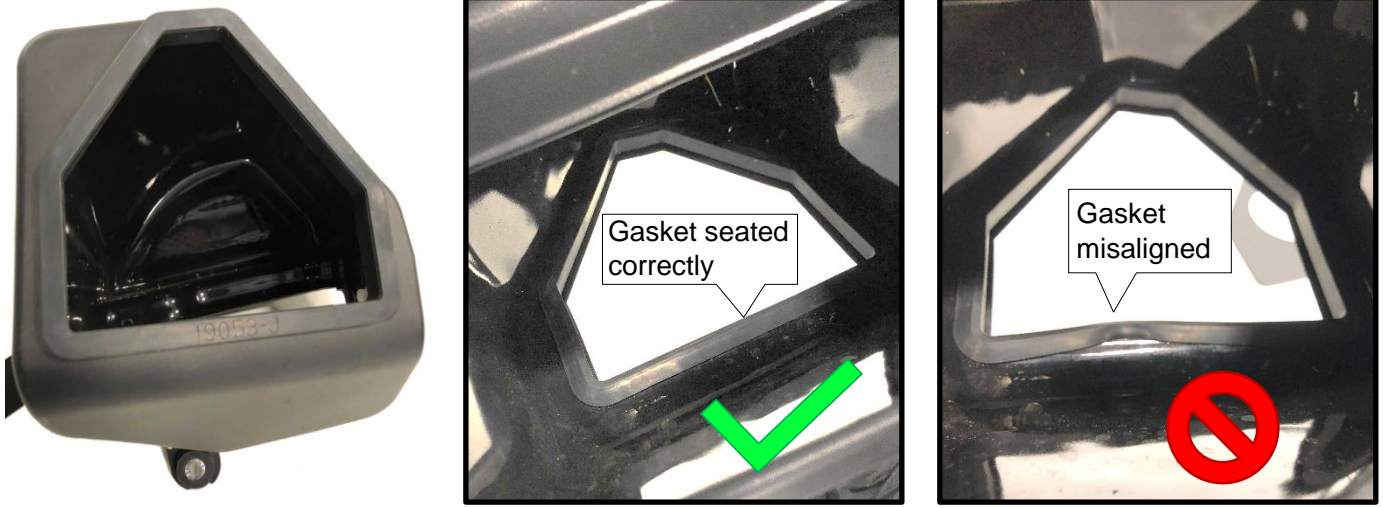
12. Remove both inlet tubes. Remove the hose clamp from the vacuum line attached to the passenger side's inlet tube, remove hose (as shown).
13. Remove the barb fitting from passenger side inlet tube and install fitting into new Z1 passenger intake tube (as shown). Secure with supplied pinch hose clamp.



14. Attach the vacuum line that was removed in step #12 to fitting on passenger Z1 intake tube. Place a small worm drive hose clamp on each end and install Z1 intake tubes on their respective turbo inlet (as shown). Tighten hose clamps at turbo inlet. Place a large worm drive hose clamp on each intake tube inlet.



15. Locate both driver and passenger Z1 air boxes, air box gaskets, air box brackets, (4) rubber mount inserts, (4) rubber mounts, and (4) M6 x 12mm SEMS screws.
16. Install each gasket onto its air box, the thicker side with the embossed logo should be on the outside (as shown). Ensure that the gasket is seated properly on both the inside and outside of the air box.



17. Attach brackets to air boxes using (2) M6 x 12mm SEMS screws on each bracket (as shown). Place a rubber mount in each slot on the ends of the brackets (as shown). Place a rubber mount insert in each rubber mount (as shown).

Note: When attaching the bracket, the front mounting screw threads from the inside of the box into a PEM nut on the bracket, while the side screw threads from the outside into the air box.

An M6x1.0 flange nut has been included if the PEM nut is not present on the bracket. The PEM nut is shown with an arrow below.



18. Locate (2) MAF adapter plates, (2) OEM MAF housings (removed in step #9), (2) air filters, (4) M6 x 20mm bolts, and (4) nyloc nuts.
19. Attach a MAF adapter plate to each MAF housing using (2) M6 x 20mm bolts and (2) nyloc nuts (as shown).

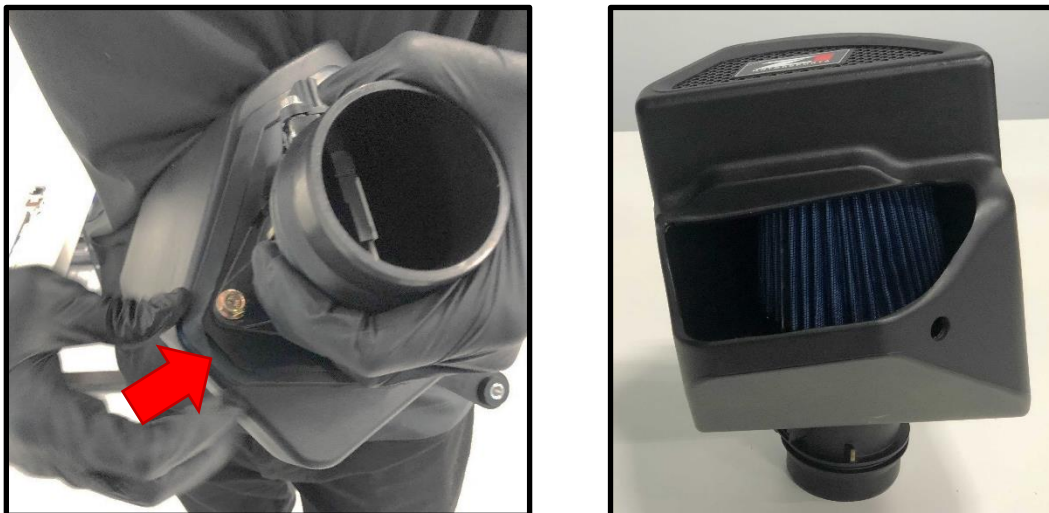
Note: There are two notches on the adapter plate to line up the MAF housings, one for the driver side and one for the passenger side.
20. Place a large worm drive hose clamp on each air filter. Attach air filter to top of MAF housing (as shown).



21. The air filters will need to be clocked to properly fit in the air box. Step #22 shows a picture with the angle of the airbox and filter relative to the MAF housing. Insert the filter assembly into the air box (you do not need to install it in the gasket's groove yet), clock the filter so it fits properly, then remove the assembly and tighten the clamp on the filter.
22. Once the filter is clocked, carefully insert filter assembly into the air box with the adapter plate sitting inside the gasket's groove.

Note #1: We found it easiest to insert the top side (shortest in length, shown below) first. Then, slide your finger or plastic trim tool under the gasket pulling it over the edge of the adapter plate.

Note #2: Once the filter assembly is installed, refer back to pictures in step #16 and confirm gasket is seated properly on the inside of the air box.



23. Insert each air box assembly into their corresponding inlet tubes (tubes pictured in step #14). Tighten hose clamps.

24. Attach each air box bracket to vehicle using (2) screws on each side that were removed in step #6.
25. Reconnect each MAF sensor connector to each MAF sensor.
26. Reattach radiator air duct to vehicle with the (8) plastic pop-clips removed in step #4.
27. Properly lower vehicle from jack stands.
28. Inspect vehicle for loose tools/items
29. Start vehicle. While at idle, check for leaks or faulty operation of air intake kit.
30. Lower hood of vehicle.
31. Perform a final test drive of vehicle.

Completed assembly of Q50 / Q60 Cold Air Intake should look as shown (air duct removed):



END

Additional Technical Support:
Contact Z1 Motorsports at info@z1motorsports.com
Or call 770-838-7777 between 9am and 6pm ET