

Z1 R35 GTR HOOD STRUT KIT INSTALLATION MANUAL



This Installation Manual is intended for the following models:

2009-2016

Nissan GTR

PROLOGUE:

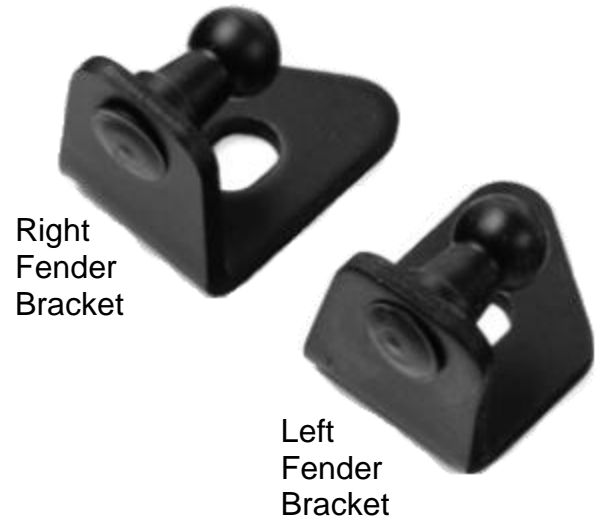
Study these instructions completely before proceeding to assembly. The installer must have a thorough knowledge of automotive systems operation. If unfamiliar with any of the concepts outlined in this instruction, we recommend the installation be completed by a qualified professional.

WARNING!

Extreme caution should be taken when performing maintenance or performance upgrades to your vehicle. Please observe and abide by any Warning or Caution labels placed on the various components and tools used when servicing your vehicle. If you have any questions regarding installation or the various components included with the Z1 Motorsports R35 GTR Hood Strut Kit, consult with a Professional Mechanic or contact Z1 Motorsports for more information.

PARTS INCLUDED:

Item	Quantity	Description
1	2	R35 GTR Hood Strut
2	1	Right Fender Bracket
3	1	Left Fender Bracket
4	2	Hood Bracket



TOOLS REQUIRED:

- Ratchet
- 10mm Socket/Wrench
- Flat-head Screwdriver

SAFETY REQUIREMENTS:

- Always wear safety glasses and any necessary protective garments. If using any fluids, chemicals, or solvents, a respirator is recommended.
- Always turn the ignition to the OFF position and disconnect the NEGATIVE battery terminal.
- Always use properly rated jack stands when working under your vehicle.
- Always keep limbs and parts away from moving drivetrain parts.
- Only operate drivetrain in safe space and well-ventilated areas.

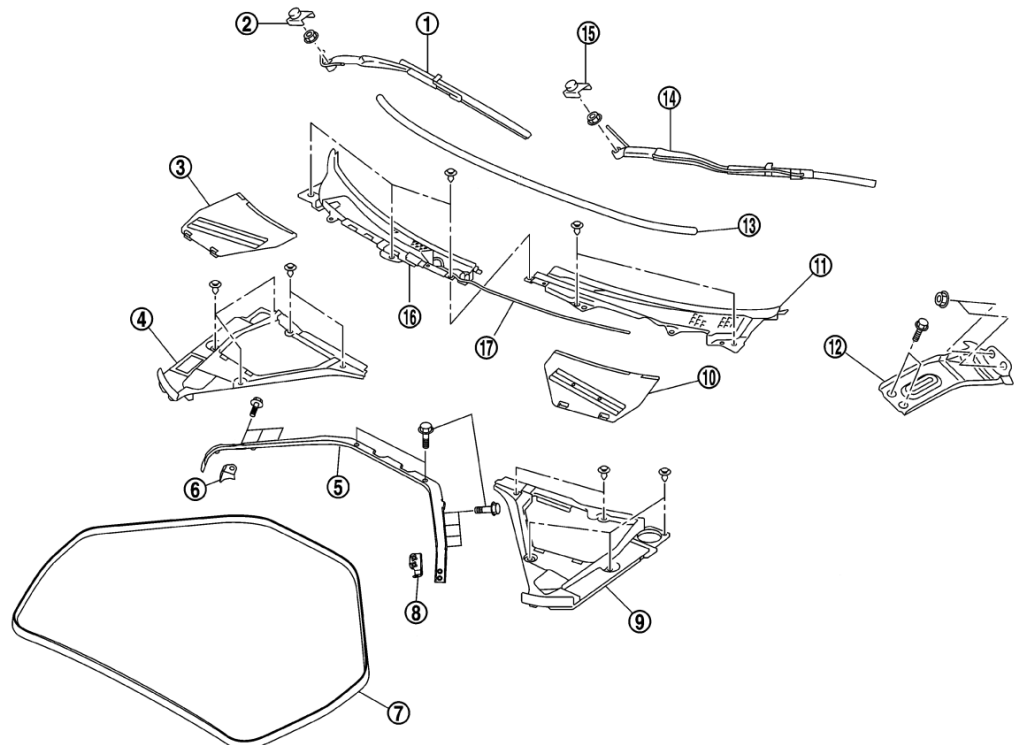
BEFORE YOU BEGIN:

Remove contents from the Z1 Motorsports R35 GTR Hood Strut Kit and verify that ALL necessary hardware is present.

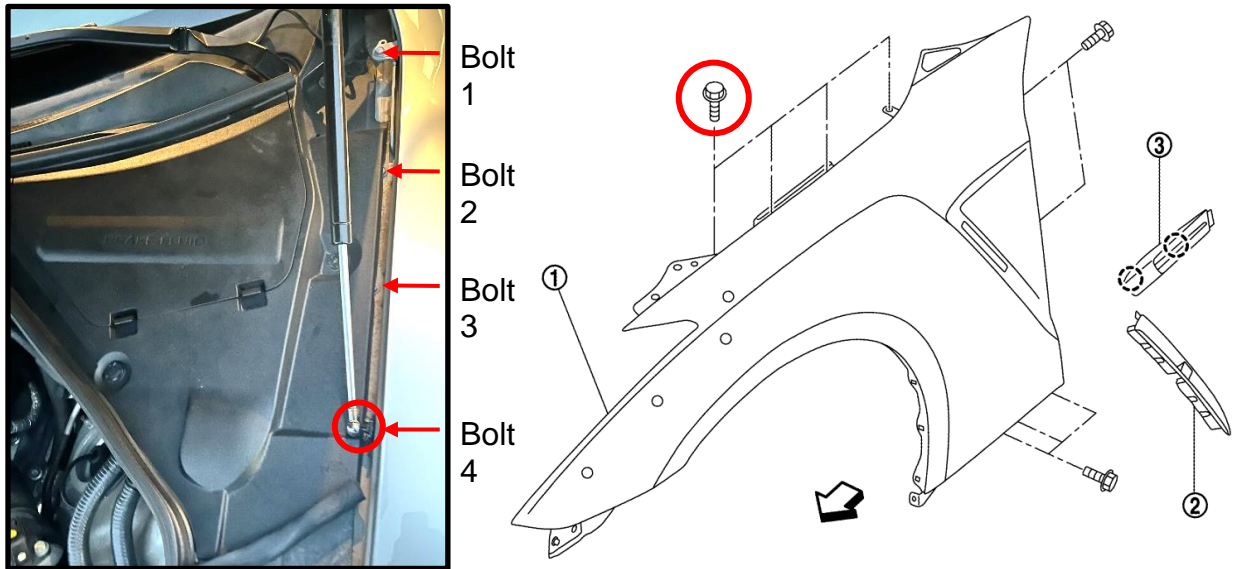
PROCEDURE:

1. Place the transmission in Park position (or in Reverse gear if equipped with a manual transmission). Apply the parking brake.
2. Unlatch and raise vehicle's hood. Apply hood prop.
3. Remove both hoodledge covers (4) & (9) by removing the (5) plastic pop clips on each cover.

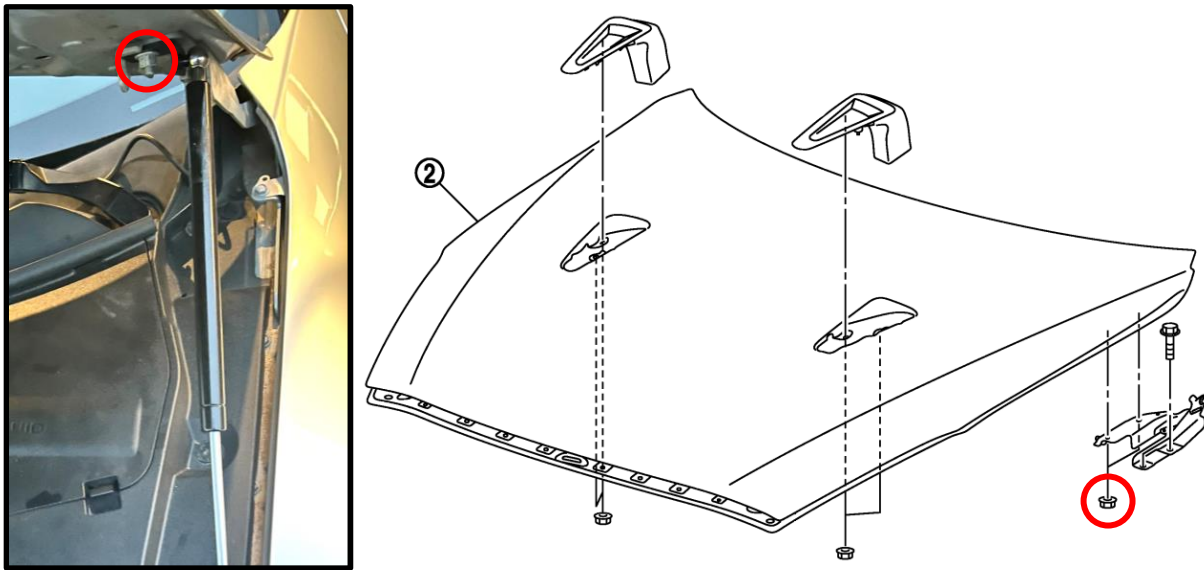
Use the diagram below as reference for the following steps:



4. Locate both fender brackets.
5. Remove the mounting bolt in the 4th position from the top of the fender (circled below).
6. Using the bolt removed in the previous step, install fender bracket onto fender with ball stud pointing inward.



7. Repeat steps 5 & 6 on opposite side of vehicle.
8. Remove the top hood hinge mounting nut on both sides (circled below)
9. Using the nut removed in the previous step, install hood bracket onto hood with ball stud pointing outward.



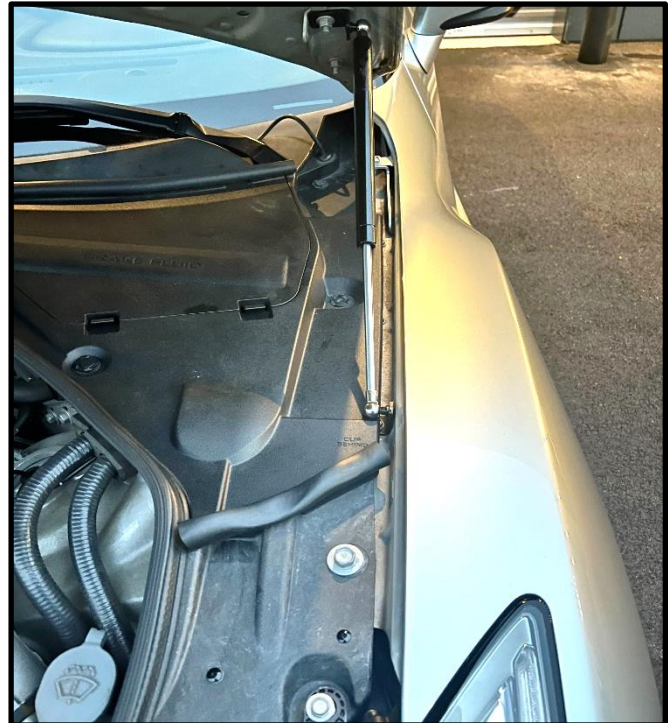
10. Repeat steps 8 & 9 on opposite side of vehicle.

11. Locate Z1 Hood Struts. Remove the small metal clip on the ball socket end. Snap ball socket on the cylinder end into the ball stud on the hood. Attach other end to ball stud at fender. Place small metal clip back in ball socket end to secure in place (as shown). Repeat on opposite side of vehicle.



12. Reinstall both hoodledge cover's that were removed in step #3.

13. Completed installation of the Z1 R35 GTR Hood Strut Kit should look as shown:



14. Inspect vehicle for loose tools/items.

15. Lower hood of vehicle.

16. Perform a final test drive of vehicle.

END

Additional Technical Support:
Contact Z1 Motorsports at info@z1motorsports.com
Or call 770-838-7777 between 9am and 6pm ET