

# Z1 RZ34 BASH BAR INSTALLATION MANUAL



This Installation Manual is intended for the following models:

2023+

Nissan Z

## PROLOGUE:

Study these instructions completely before proceeding to assembly. The installer must have a thorough knowledge of automotive systems operation. If unfamiliar with any of the concepts outlined in this instruction, we recommend the installation be completed by a qualified professional.

## WARNING!

Extreme caution should be taken when performing maintenance or performance upgrades to your vehicle. Please observe and abide by any Warning or Caution labels placed on the various components and tools used when servicing your vehicle. If you have any questions regarding installation or the various components included with the Z1 Motorsports RZ34 Bash Bar, consult with a Professional Mechanic, or contact Z1 Motorsports for more information.

## **PARTS INCLUDED:**

Item	Quantity	Description
1	1	Z1 Bash Bar

## **TOOLS REQUIRED:**

- Hydraulic Jack
- (2) 2-Ton (or greater) Jack Stands
- Ratchet
- Ratchet Extension(s)
- Assorted Metric Wrenches
- Assorted Metric Sockets
- Torque Wrench
- Channel Lock Pliers

## **SAFETY REQUIREMENTS:**

- Always wear safety glasses and any necessary protective garments. If using any fluids, chemicals, or solvents, a respirator is recommended.
- Always turn the ignition to the OFF position and disconnect the NEGATIVE battery terminal.
- Always use properly rated jack stands when working under your vehicle.
- Always keep limbs and parts away from moving drivetrain parts.
- Only operate drivetrain in safe space and well-ventilated areas.

## **BEFORE YOU BEGIN:**

Remove contents from the Z1 Motorsports RZ34 Bash Bar and verify that ALL necessary hardware is present.

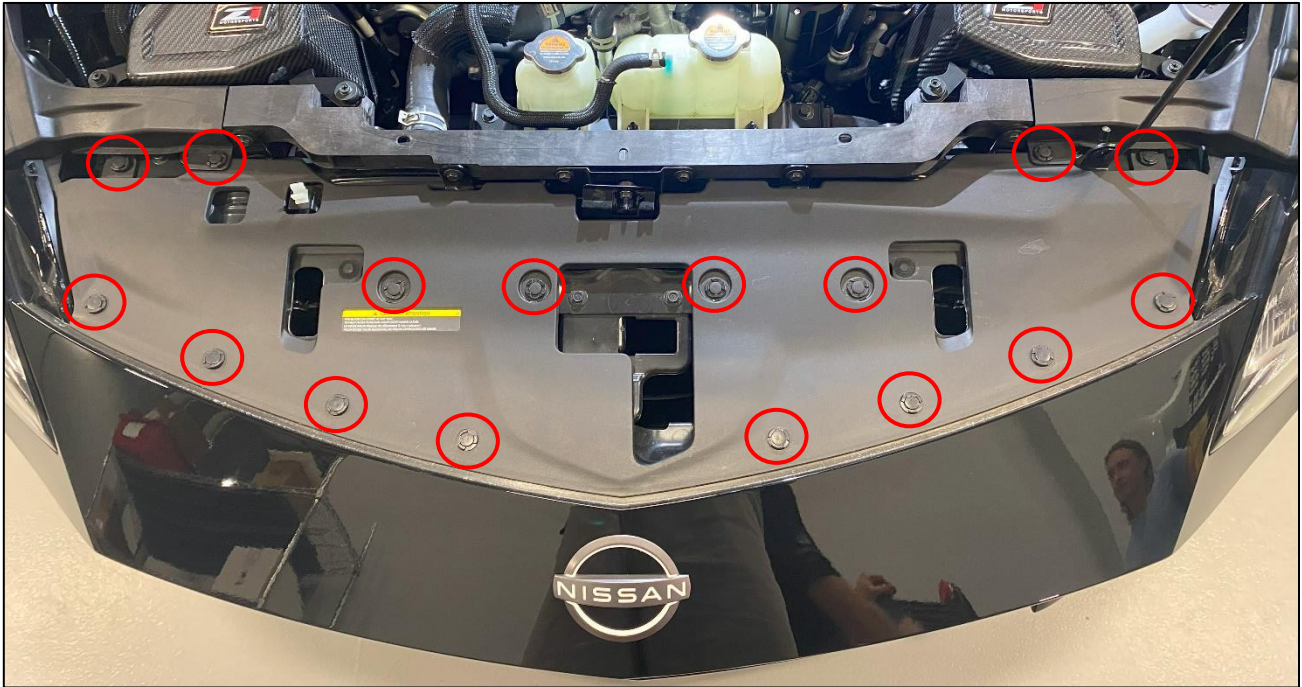
## PROCEDURE:

1. Place the transmission in Park position (or in Reverse gear if equipped with a manual transmission). Apply the parking brake.
2. Break loose the front lug nuts but do not remove them.
3. Locate proper jacking points on vehicle's chassis (refer to vehicle's Owner Manual). Raise and support vehicle using jack & jack stands.
4. Remove the front lug nuts and wheels.
5. Open and support the hood of the vehicle.
6. Disconnect the (-) **NEGATIVE** Battery Terminal.
7. Remove the Engine Under Shroud, it will be secured with multiple bolts and plastic clips. Retain all hardware.
8. Remove the (5) five plastic clips and (5) five bolts securing the Fender Liners to each side of the vehicle and remove the Fender Flares. *Figure 1.*



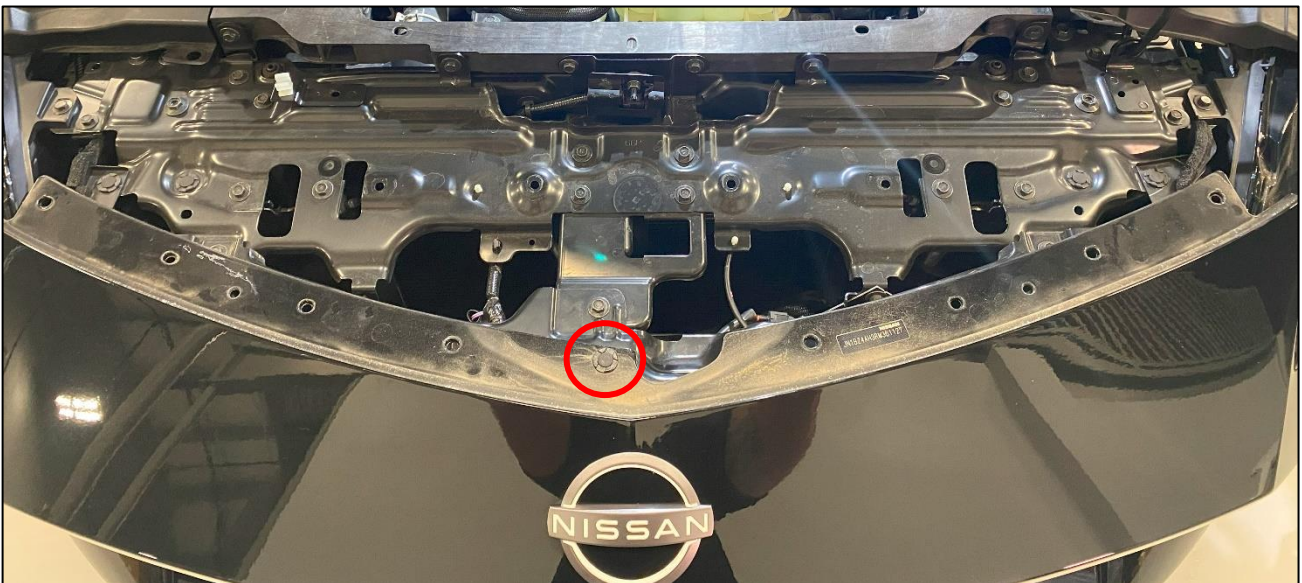
Figure 1

9. Remove the Plastic Clips securing the Radiator Air Guide to the top of the Core Support and Front Bumper. There will be (16) sixteen clips total. Remove the Radiator Air Guide. *Figure 2.*



*Figure 2*

10. With the Radiator Air Guide removed, remove the last Plastic Clip securing the top of the Front Bumper to the Core Support. *Figure 3.*



*Figure 3*

11. Remove the (1) one screw on each upper corner of the Front Bumper securing it to the Front Fenders.  
*Figure 4.*



*Figure 4*

12. Disconnect the (2) two electrical Connectors on the bracket in the passenger side of the bumper. *Figure 5.*



*Figure 5*

13. Remove the Plastic Tabs securing the Front Bumper at the corner of the Headlights, as well as the bottom of the headlights. Carefully pry the bumper away from the headlights to release it and set aside once removed.
14. Remove the Foam Impact Absorber from the OEM Crash Bar. *Figure 6.*

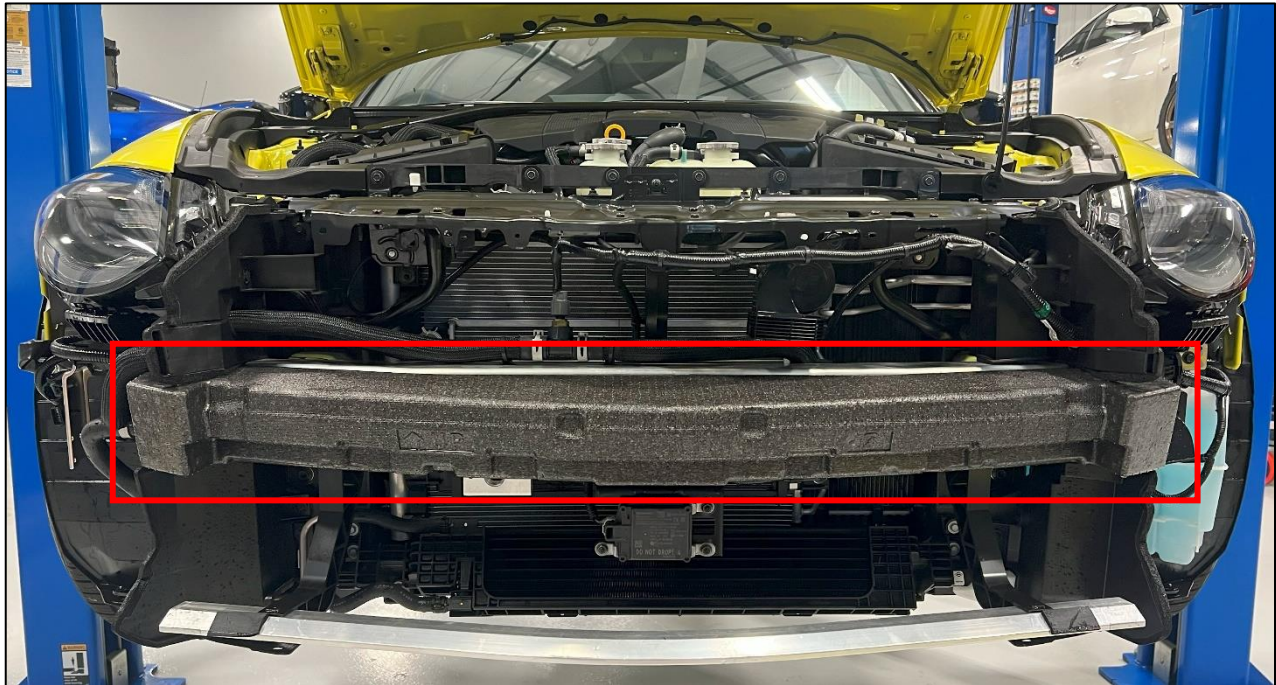


Figure 6

15. Remove the (3) three nuts securing the Radar Sensor to the center of the OEM Crash Bar, retain this hardware. *Figure 7.*

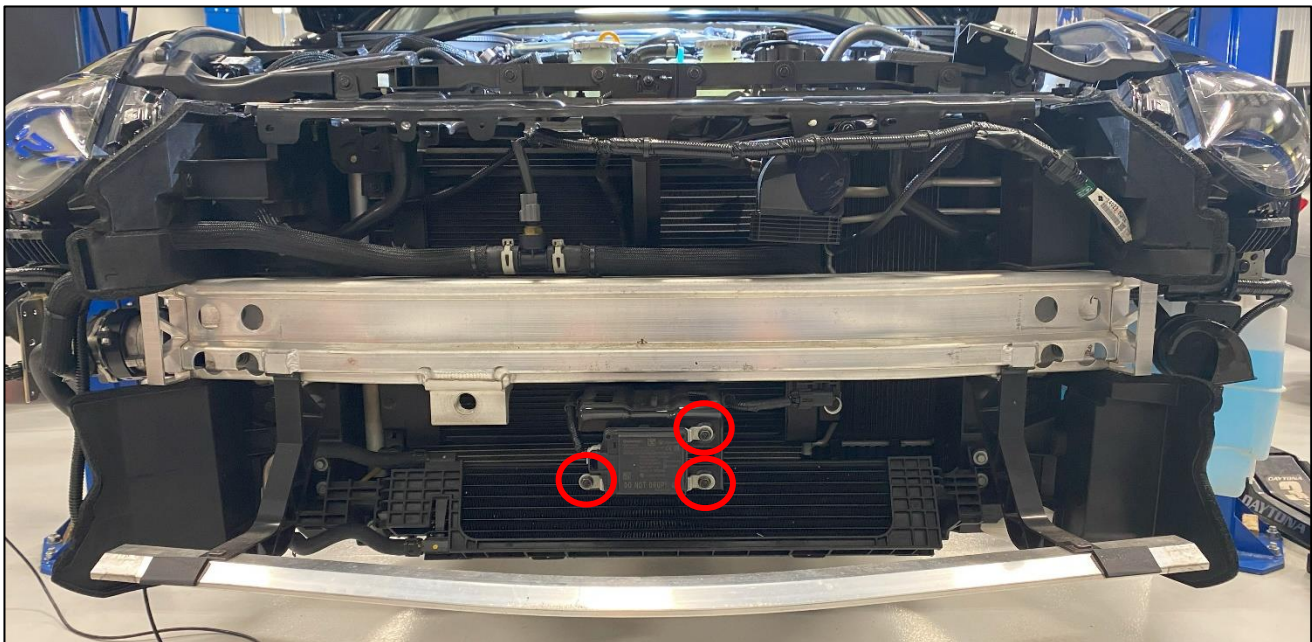
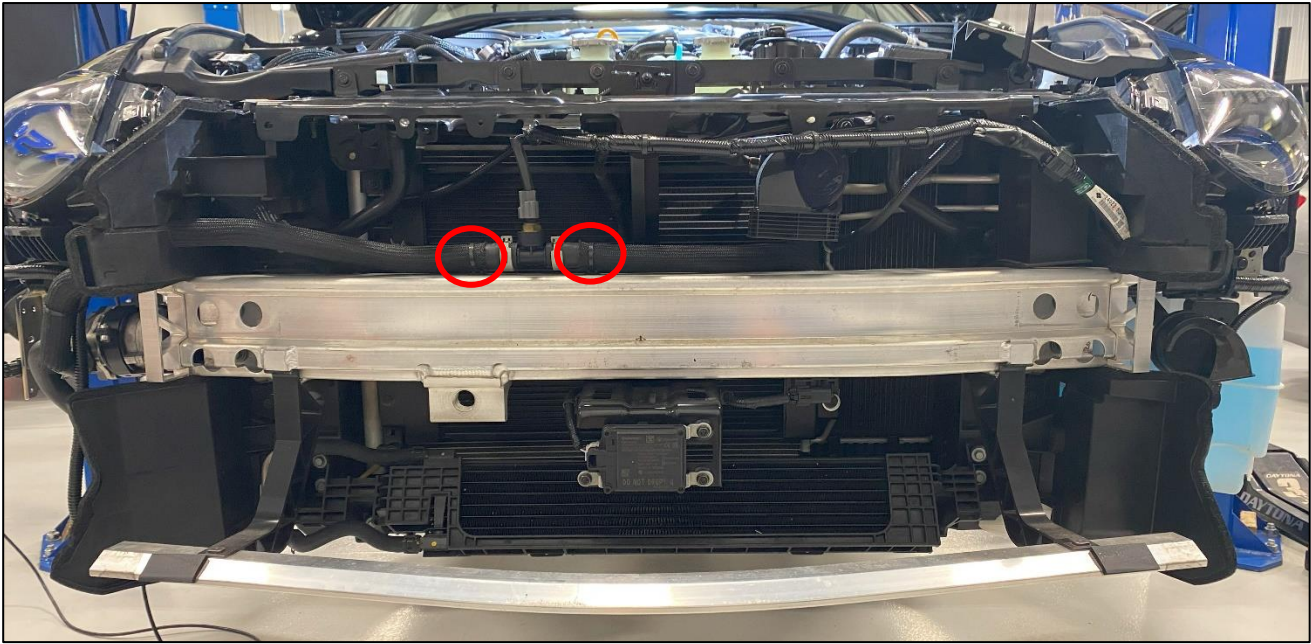


Figure 7

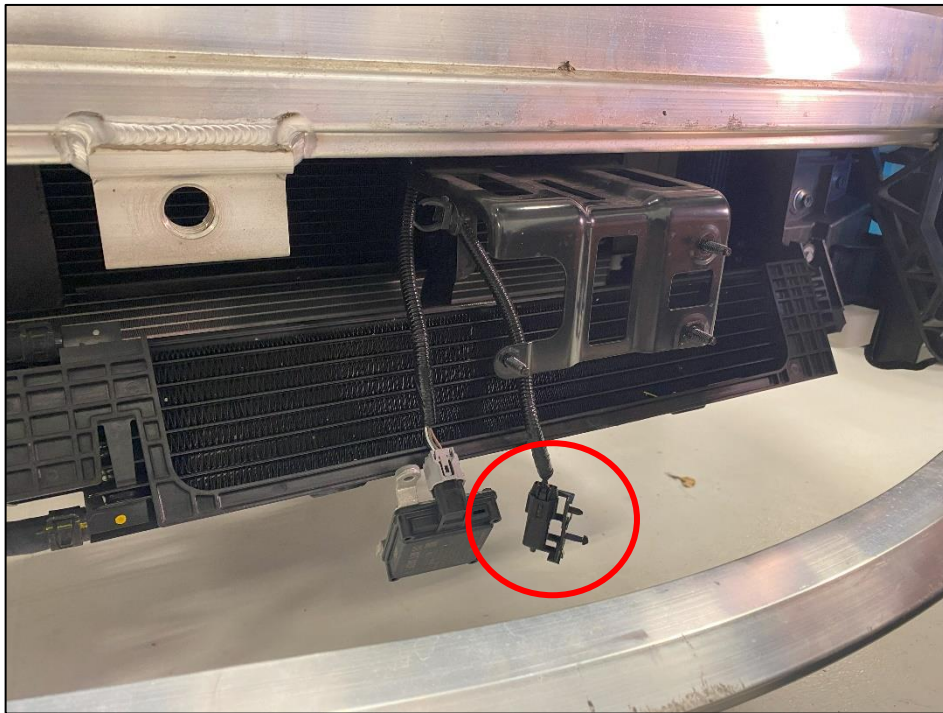
16. You can optionally disconnect the Radar Sensor or work around it with it still connected. However, if you decide to disconnect the Radar Sensor, the key **MUST** be in the OFF position, or the battery must be disconnected. If the key is not in the OFF Position, the Radar Sensor will need to be recalibrated.

17. Disconnect the Coolant Line clips from the OEM Crash Bar. *Figure 8.*



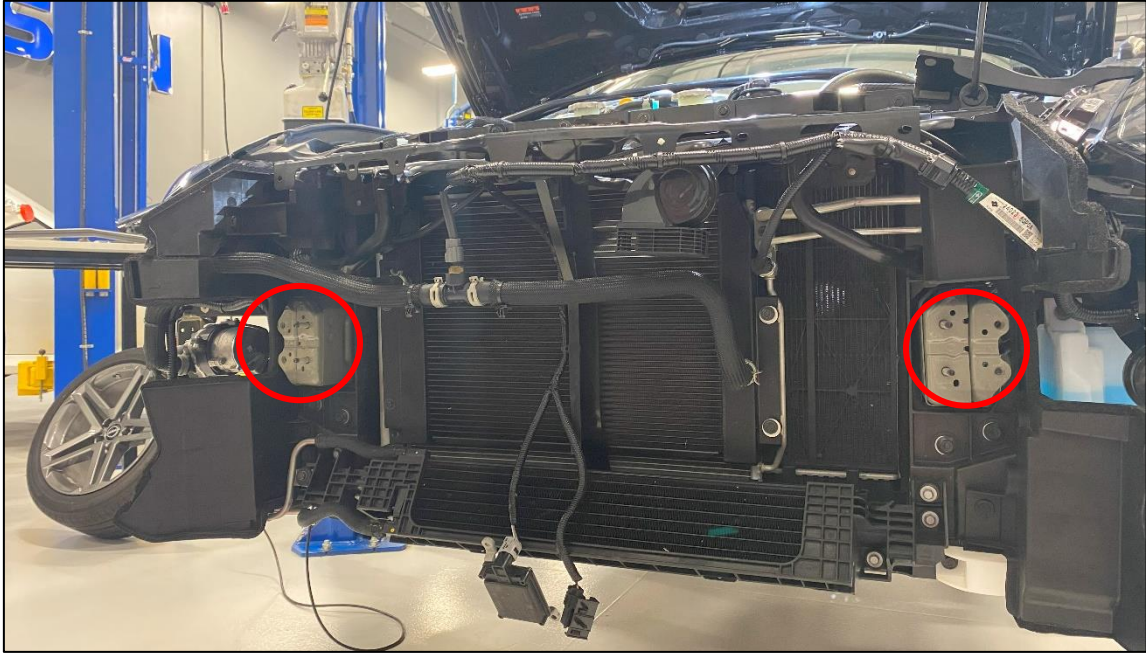
*Figure 8*

18. Disconnect the Ambient Air sensor on the underside of the OEM Crash Bar and remove the wiring harness clip. *Figure 9.*



*Figure 9*

19. Remove the (4) four nuts and (4) four bolts that secure the OEM Crash Bar to the vehicle and remove the OEM Crash Bar from the Vehicle. Retain this hardware. *Figure 10.*



*Figure 10*

20. Locate the Z1 Bar. Place it on the OE Crash Bar Mounts and secure it with the Hardware removed in Step 19. Torque the hardware to **18-ft-lbs.** *Figure 11.*

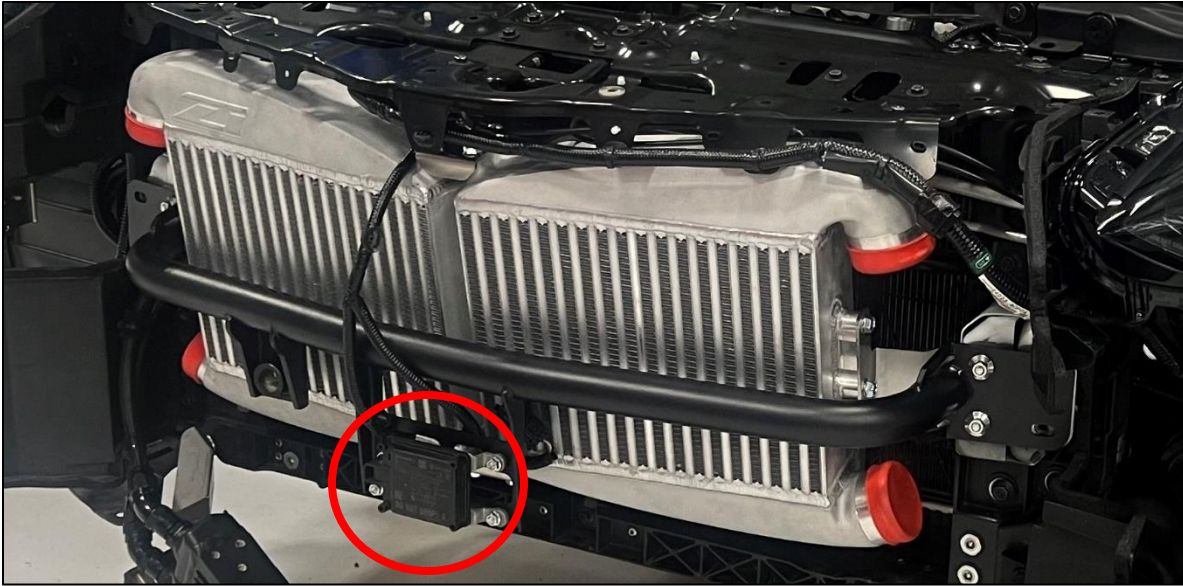
**NOTE:** The image below shows a Z with the Air-to-Air Intercooler kit, and will look a bit different. The Bash Bar is mounted the same way however.



*Figure 11*



21. Reconnect the Radar Sensor to the Bash Bar if it was disconnected. Secure it to the Bash Bar with the OE Hardware removed in *Step 15. Figure 12.*



*Figure 12*

22. Connect the Ambient Air Sensor to the tab on the Z1 Bash Bar above the Radar Sensor Mount. *Figure 13.*



*Figure 13*

23. Follow *Steps 2-13* in reverse to reinstall the Front Bumper, Trim and Wheels.
24. Install Tow Hook into the Z1 Bash Bar if applicable.
25. Safely lower vehicle from jack stands.