

Z1 SHORT SHIFTER INSTALLATION MANUAL



This Installation Manual is intended for the following models:	
2003-2008	Nissan 350Z
2003-2007	Infiniti G35 Coupe
2003-2008	Infiniti G35 Sedan
2009-2020	Nissan 370Z
2008-2013	Infiniti G37 Coupe
2009-2013	Infiniti G37 Sedan
2023+	Nissan Z

PROLOGUE:

Study these instructions completely before proceeding to assembly. The installer must have a thorough knowledge of automotive systems operation. If unfamiliar with any of the concepts outlined in this instruction, we recommend the installation be completed by a qualified professional.

WARNING!

Extreme caution should be taken when performing maintenance or performance upgrades to your vehicle. Please observe and abide by any Warning or Caution labels placed on the various components and tools used when servicing your vehicle. If you have any questions regarding installation or the various components included with the Z1 Motorsports Short Shifter, consult with a Professional Mechanic or contact Z1 Motorsports for more information.

PARTS INCLUDED:

Item	Quantity	Description
1	1	Assembled Z1 Short Shifter
2	1	Z1 Short Shifter Top Plate
3	1	Z1 Short Shifter Spacer
4	3	M6 x 30mm Flange Bolts

TOOLS REQUIRED:

- Hydraulic Jack
- (2) 2-Ton (or greater) Jack Stands
- Ratchet
- Ratchet Extension(s)
- Assorted Metric Sockets/Wrenches
- In-Lb Torque Wrench
- Pliers

SAFETY REQUIREMENTS:

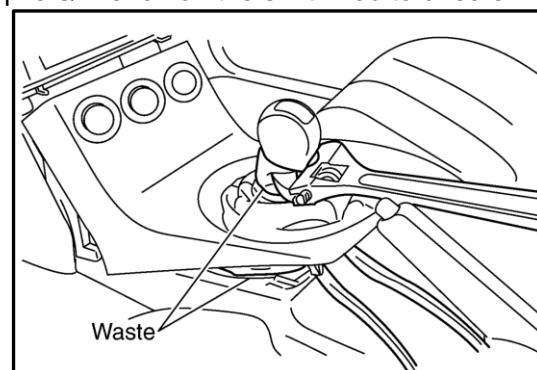
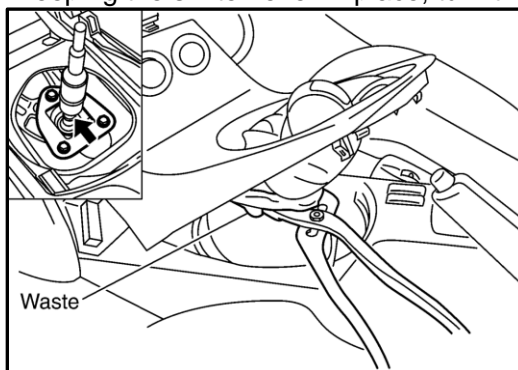
- Always wear safety glasses and any necessary protective garments. If using any fluids, chemicals, or solvents, a respirator is recommended.
- Always turn the ignition to the OFF position and disconnect the NEGATIVE battery terminal.
- Always use properly rated jack stands when working under your vehicle.
- Always keep limbs and parts away from moving drivetrain parts.
- Only operate drivetrain in safe space and well-ventilated areas.

BEFORE YOU BEGIN:

Remove contents from the Z1 Motorsports Short Shifter and verify that ALL necessary hardware is present.

PROCEDURE:

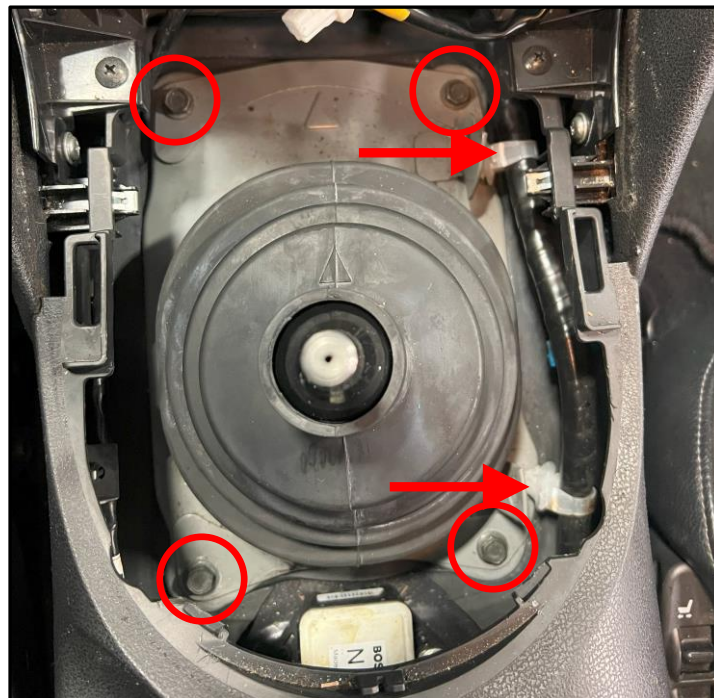
1. Place the transmission in Neutral position. Apply the parking brake.
2. Locate proper jacking points on vehicle's chassis (refer to vehicle's Owner Manual). Raise and support vehicle using jack & jack stands.
3. Remove the shift knob. You should be able to just rotate the knob counterclockwise to remove it, but if the knob is really tight follow the steps below.
 - a. Lift the console boot to gain access to the shifter lever assembly. Then using channel lock pliers and a waste cloth, grab the shifter lever (shown below). Using another pair of channel lock pliers or a pipe wrench and a waste cloth, grab the shift knob (shown below)
 - b. Keeping the shifter lever in place, turn the pliers/wrench on the shift knob to unscrew it.



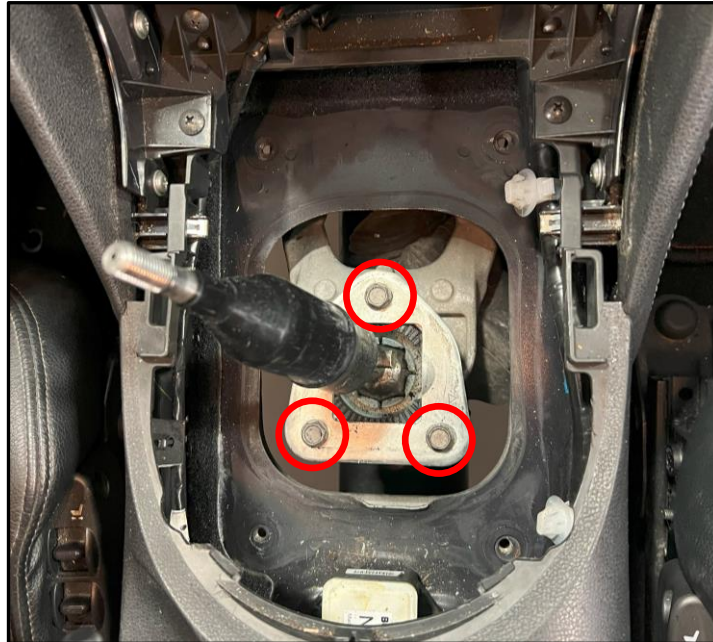
4. On the underside of the vehicle, above the front section of the driveshaft, remove the lower rubber shift boot (shown below).
5. Remove the bolt securing the shifter to the shifter fork on the transmission (shown below).



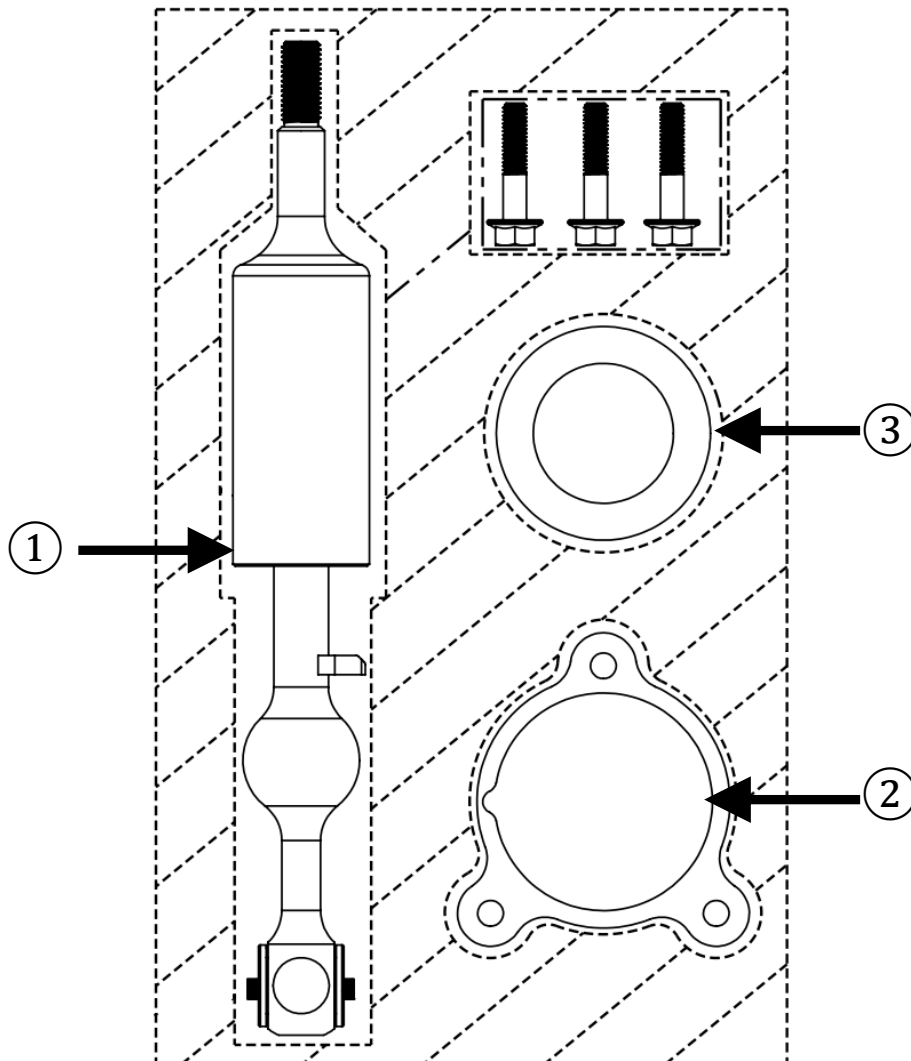
6. If not completed in step # 3, lift up on the console boot to gain access to the shifter lever assembly. You can either disconnect the electrical connectors on the console boot and set the boot to the side, or let the console boot hang to the side. Be careful not to stretch or stress the wires.
7. For 370Z/G37/Z owners: Disconnect clips securing the wiring harness to the shifter boot plate (shown below).
8. Remove the (4) bolts securing the shifter boot/plate to vehicle (circled below). Remove the upper rubber boot and plate.



9. Remove the (3) bolts securing the shifter top plate (shown below). Be careful as the shifter will likely spring up due to the tension of the shifter return spring. Remove shifter, spring, and ball cup socket. Retain the hardware as it will be reused later.



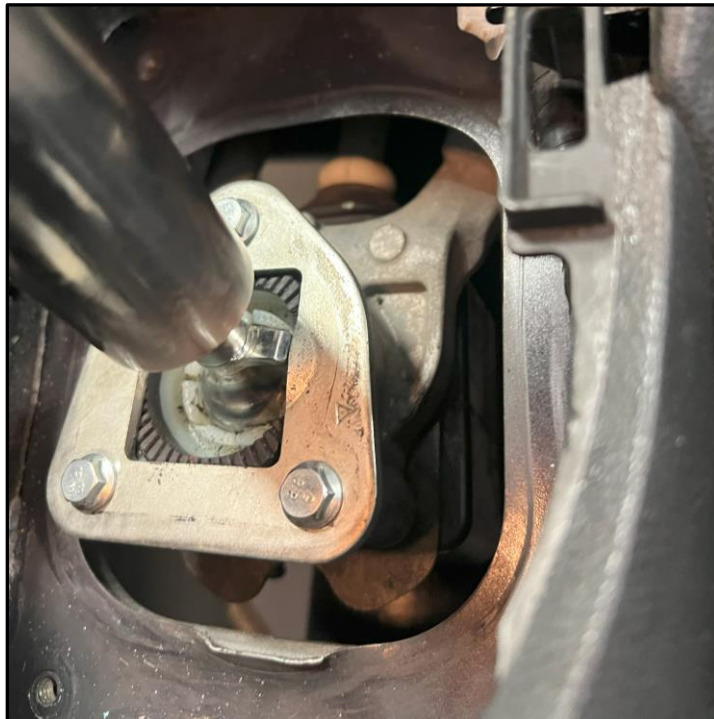
10. Locate the new Z1 round spacer (3) and new Z1 top plate (2).



11. Position the spacer in the shifter bracket (as shown below).
12. Position the OE spring onto the spacer (as shown below).
13. Position the Z1 top plate on top of the OE shifter bracket (as shown below).



14. Locate the new Z1 shifter rod. Cut the zip tie at the bottom, make sure to not drop any of the bearing sleeves.
15. Remove the OE plastic shifter ball socket cup from the OE shifter. Transfer the ball socket cup onto the new Z1 shifter rod.
16. Install Z1 shifter rod with ball socket cup into shifter bracket with the OE top plate. Loosely secure with the (3) provided M6 x 30mm flange bolts (as shown below). Do not fully tighten the bolts yet.



17. On the underside of the vehicle, install the OE bolt that was removed in step # 5 through the Z1 shifter rod securing it to the transmission fork. Torque to 10ft-lbs. Reinstall the lower shift boot that was removed in step # 4.
18. Make sure the plate is installed in the correct orientation as shown above, with the bent part of the cut out, pointed up and on the passenger side. Torque bolts to 85in-lbs.
19. That cut out is the reverse lockout. Make sure the reverse lock out is functioning properly.
 - a. Shifter WILL NOT shift into reverse without pressing down on the shifter.
 - b. Shifter WILL shift into reverse when pressing down on the shifter.
20. If the reverse lockout function is not working properly, you will likely need to slightly adjust or realign the top plate. Loosen the (3) bolts and move the plate accordingly, then repeat steps 18 & 19.
21. Once the reverse lockout is properly set. Reinstall the upper rubber boot and plate that was removed in step # 8. Torque bolts to 49in-lbs.
22. If removed, reinstall the clips securing the wiring harness to the upper boot plate.
23. Reattach any electrical connectors and reinstall the console boot.
24. Reinstall shift knob onto Z1 Short Shifter.



25. Properly lower vehicle from jack and jack stands.
26. Perform a final test drive of vehicle.

END

Additional Technical Support:
Contact Z1 Motorsports at info@z1motorsports.com
Or call 770-838-7777 between 9am and 6pm ET