

Z1 SINGLE PIECE STAINLESS STEEL UPPER CLUTCH LINE INSTALLATION MANUAL



This Installation Manual is intended for the following models:	
2003-2008	Nissan 350Z
2009-2020	Nissan 370Z
2003-2007	Infiniti G35 Coupe
2003-2006	Infiniti G35 Sedan
2008-2013	Infiniti G37 Coupe
2009-2013	Infiniti G37 Sedan

PROLOGUE:

Study these instructions completely before proceeding to assembly. The installer must have a thorough knowledge of automotive systems operation. If unfamiliar with any of the concepts outlined in this instruction, we recommend the installation be completed by a qualified professional.

WARNING!

Extreme caution should be taken when performing maintenance or performance upgrades to your vehicle. Please observe and abide by any Warning or Caution labels placed on the various components and tools used when servicing your vehicle. If you have any questions regarding installation or the various components included with the Z1 Motorsports Single Piece Stainless Steel Upper Clutch Line, consult with a Professional Mechanic or contact Z1 Motorsports for more information.

PARTS INCLUDED:

Item	Quantity	Description
1	1	Single Piece Stainless Steel Clutch Line
2	2	Copper Crush Washer
3	2	Banjo Bolts

TOOLS REQUIRED:

- Hydraulic Jack
- (2) 2-Ton (or greater) Jack Stands
- Ratchet
- Flat-head Screwdriver
- Phillips Head Screwdriver
- Assorted Metric Sockets & Wrenches

SAFETY REQUIREMENTS:

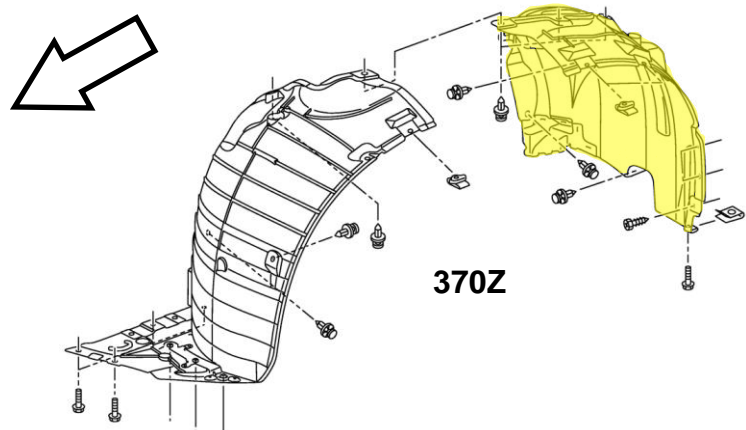
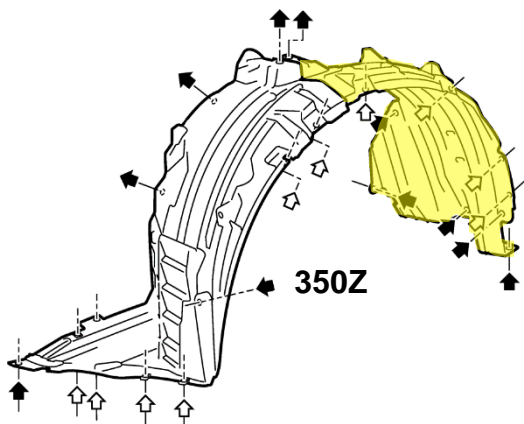
- Always wear safety glasses and any necessary protective garments. If using any fluids, chemicals, or solvents, a respirator is recommended.
- Always turn the ignition to the OFF position and disconnect the NEGATIVE battery terminal.
- Always use properly rated jack stands when working under your vehicle.
- Always keep limbs and parts away from moving drivetrain parts.
- Only operate drivetrain in safe space and well-ventilated areas.

BEFORE YOU BEGIN:

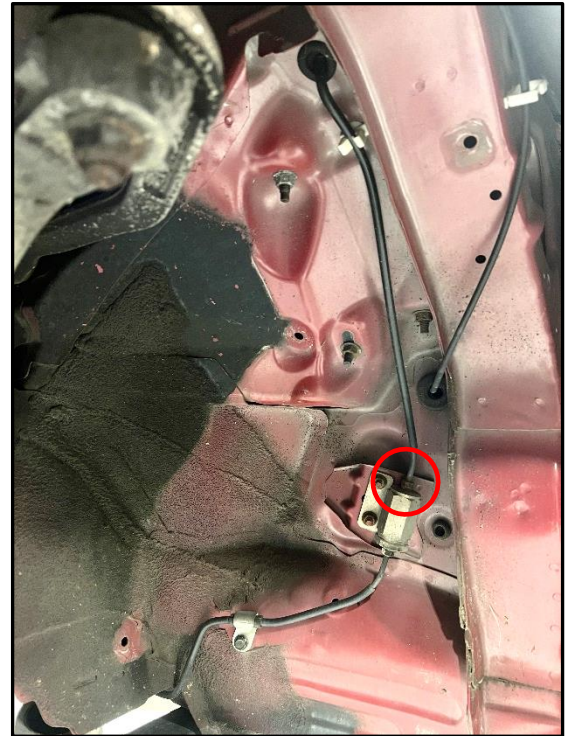
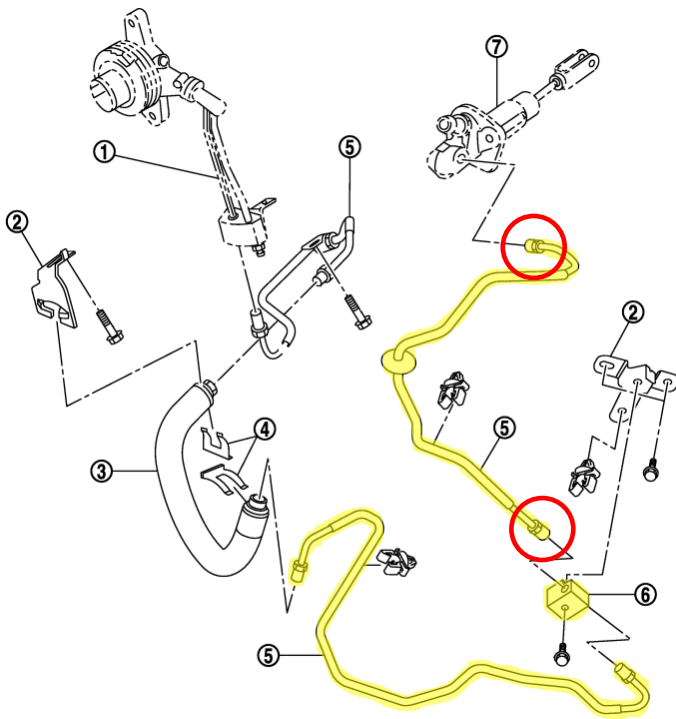
Remove contents from the Z1 Motorsports Single Piece Stainless Steel Upper Clutch Line and verify that ALL necessary hardware is present.

PROCEDURE:

1. Place the transmission in Park position (or in Reverse gear if equipped with a manual transmission). Apply the parking brake.
2. Loosen the lug nuts on the driver's side front wheel, but DO NOT remove the lug nuts.
3. Locate proper jacking points on vehicle's chassis (refer to vehicle's Owner Manual). Raise and support vehicle using jack & jack stands.
4. Remove the lug nuts and driver front wheel.
5. Remove the rearward fender liner in the driver front wheel-well (shown below).



- The Z1 Single Piece Stainless Steel Upper Clutch Line will replace all of the highlighted components in the diagram below. Note that the diagram is of a 370Z. 350Z/G35 lines will be routed slightly differently as you can see from the photo below.
- Unthread the hardline that connects to the clutch master cylinder in the engine bay and to the distribution block (370Z) or clutch damper (350Z), circled below.



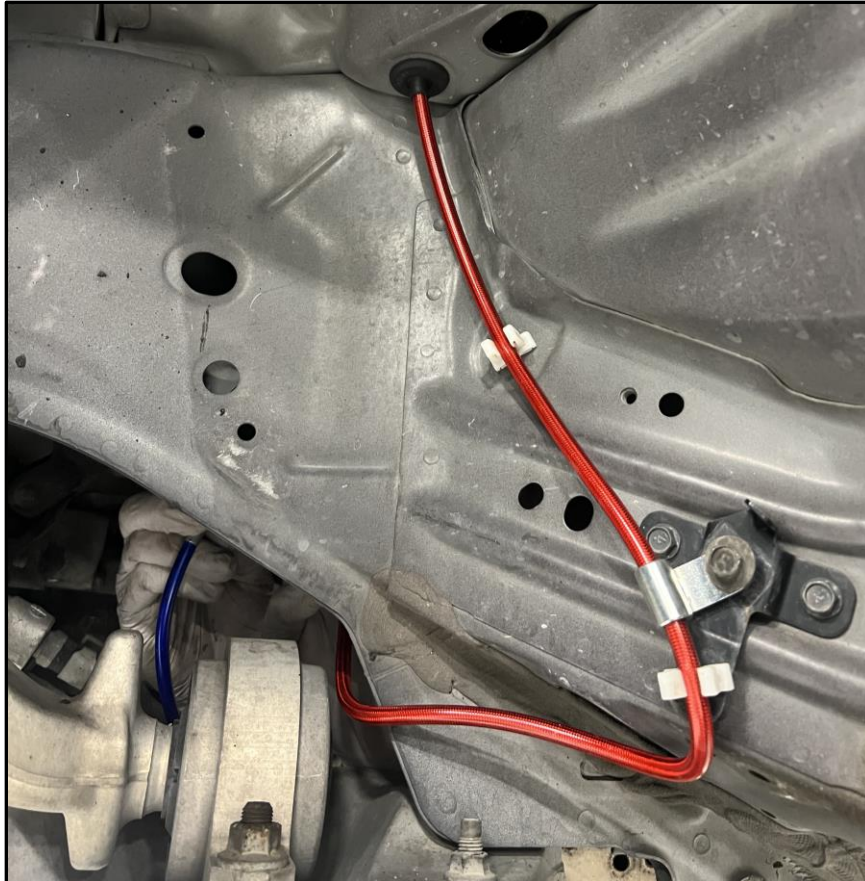
Note: Not all 350Z's will have the clutch damper, CD008 models will have one while CD009 will not.

- Unthread the next hardline that connects to the soft hose on the other side of the frame rail (350Z shown below). Then remove the metal clip holding the hardline in place.

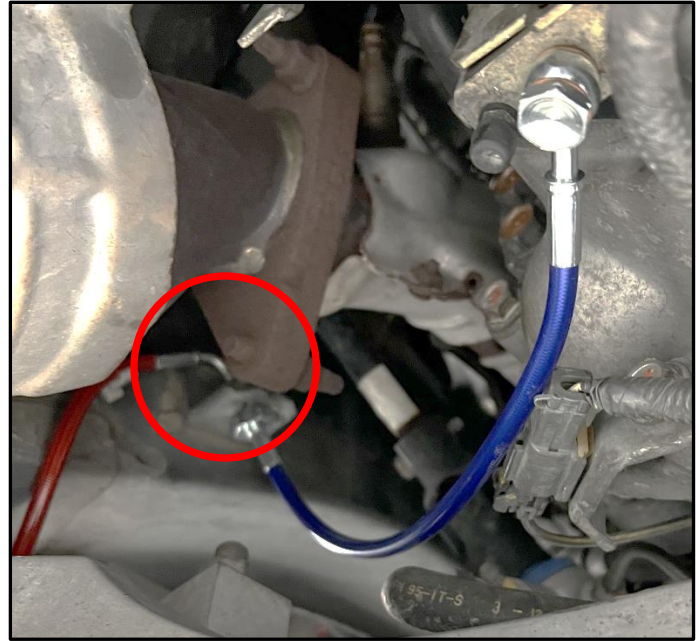


- Once all clutch piping connections have been disconnected, remove the bolt(s) securing the distribution block or clutch damper to vehicle, and the bolts securing any P-clips to vehicle. Then, remove OEM clutch piping and all additional components. The rubber grommet in the wheel well that the OEM hardline passes through should remain, this will get reused with the Z1 line.
- Locate the Z1 Single Piece Stainless Steel Upper Clutch Line, (2) banjo bolts, and (2) crush washers.

11. From the bottom, push the banjo fitting end of the clutch line through the rubber grommet in the wheel well and towards the clutch master cylinder in the engine bay.
12. Two different banjo bolts are provided, one of them is used for the OE clutch master cylinder (shorter banjo bolt), while the other is used on many common aftermarket clutch master cylinders. Using the appropriate banjo bolt, (2) crush washers, and the banjo fitting end of the Z1 clutch line, attach the Z1 clutch line to the clutch master cylinder.
13. Route the clutch line in a similar fashion to the OEM hardline utilizing the same clips in the wheel well to hold the line in place (as shown below).



14. Attach the Z1 line to the lower clutch line on the other side of the frame rail (370Z shown below), secure with the metal clip that was removed in step # 8.



15. Follow the Factory Service Manual's procedure for bleeding the clutch line.

16. Reinstall the fender liner that was removed in step # 5.

17. Reinstall driver front wheel and lug nuts.

18. Check vehicle for loose tools/items.

19. Properly lower vehicle from jack stands.

20. Torque lug nuts to 80ft-lbs.

21. Perform a final test drive of vehicle.

END

Additional Technical Support:

Contact Z1 Motorsports at info@z1motorsports.com

Or call 770-838-7777 between 9am and 6pm ET