

Z1 370Z / Z ALUMINUM STRUT BRACE INSTALLATION MANUAL



This Installation Manual is intended for the following models:

2009-2020	Nissan 370Z
2023+	Nissan Z

PROLOGUE:

Study these instructions completely before proceeding to assembly. The installer must have a thorough knowledge of automotive systems operation. If unfamiliar with any of the concepts outlined in this instruction, we recommend the installation be completed by a qualified professional.

WARNING!

Extreme caution should be taken when performing maintenance or performance upgrades to your vehicle. Please observe and abide by any Warning or Caution labels placed on the various components and tools used when servicing your vehicle. If you have any questions regarding installation or the various components included with the Z1 Motorsports 370Z / Z Aluminum Strut Brace, consult with a Professional Mechanic or contact Z1 Motorsports for more information.

PARTS INCLUDED:

Item	Quantity	Description
1	1	Z1 Aluminum Strut Brace
2	1	Rear Mount Spacer
3	2	M10 Flange Nuts

TOOLS REQUIRED:

- Ratchet
- Ratchet Extension(s)
- 14mm Socket/Wrench
- 15mm Socket/Wrench
- Torque Wrench
- Flat-head Screwdriver
- Snips/Body Saw

SAFETY REQUIREMENTS:

- Always wear safety glasses and any necessary protective garments. If using any fluids, chemicals, or solvents, a respirator is recommended.
- Always turn the ignition to the OFF position and disconnect the NEGATIVE battery terminal.
- Always use properly rated jack stands when working under your vehicle.
- Always keep limbs and parts away from moving drivetrain parts.
- Only operate drivetrain in safe space and well-ventilated areas.

BEFORE YOU BEGIN:

Remove contents from the Z1 Motorsports 370Z / Z Aluminum Strut Brace and verify that ALL necessary hardware is present.

PROCEDURE:

1. Place the transmission in Park position (or in Reverse gear if equipped with a manual transmission). Apply the parking brake.
2. Raise and support the hood of the vehicle.
3. If equipped, remove the OE Strut Brace.

a. 370Z Owners:

- i. Remove the center cowl panel cover by removing the rubber seal and the (2) push-clips, then pulling up. The push-clips locations are shown in *Figure 1*.
- ii. Remove the (2) two bolts and (1) one nut securing the sides of the Strut Brace to the Strut Towers. Retain the hardware as it will be reused later.
- iii. Remove the (2) two nuts securing the rear of the Strut Brace to the studs above the firewall.
- iv. Remove the OE strut brace.



Figure 1

b. Z Owners:

- i. Remove the (2) two bolts and (1) one nut securing the sides of the strut brace to the strut towers. Retain the hardware as it will be reused later.
- ii. Remove the OE strut brace.

4. **370Z Owners:** Using a body saw or snips, cut the protruding section on the front of the Center Cowl Section off. *Figure 2.*

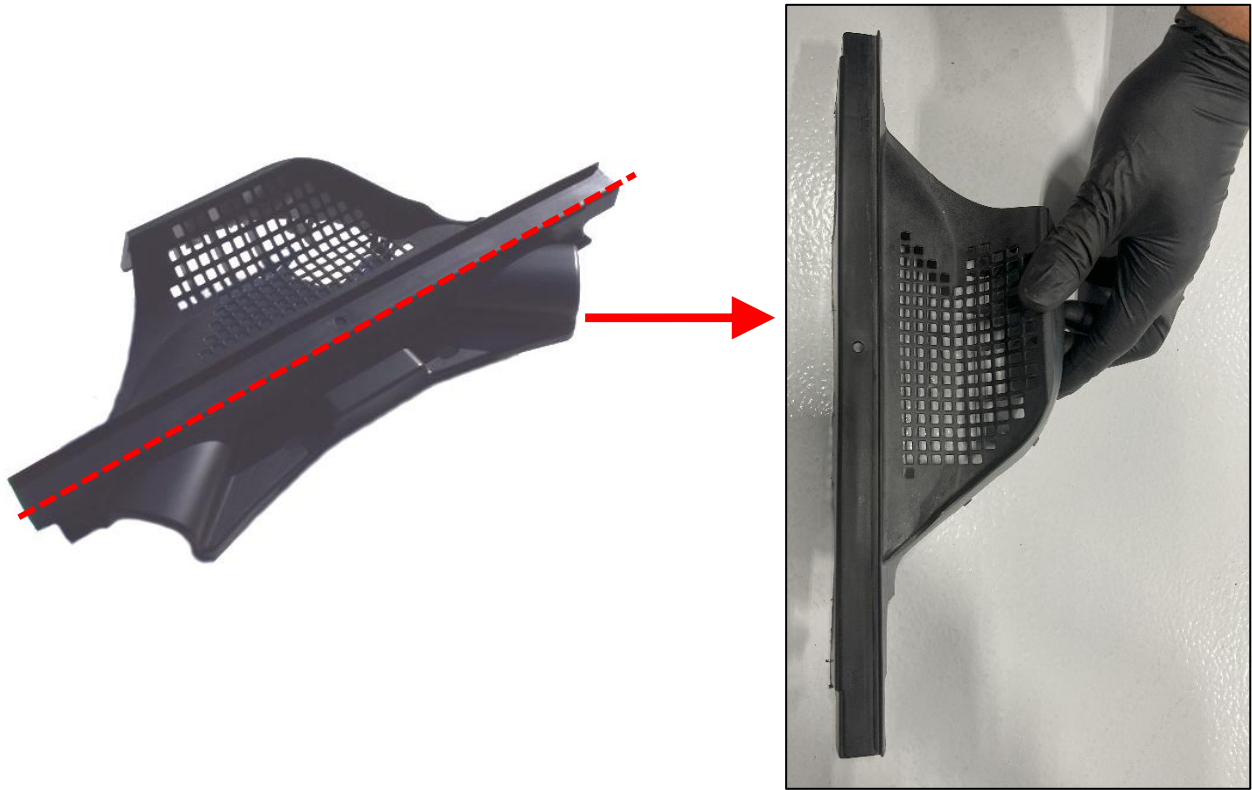


Figure 2

5. **Z Owners:**

- a. The Center Cowl Section on the New Z is attached to the driver side of the Cowl Panel and requires the removal of both Windshield Wipers, and both the Brake and Battery compartments covers.
- b. Remove the covers over the Brake and Battery compartments.
- c. Using a flat-head screwdriver or plastic push-clip removal tool, remove the push-clips securing the brake and battery compartment's outer covers. *Figure 3.*



Figure 3

- c. Remove the covers on the windshield wipers.
- d. Using a 19mm socket, remove the nuts securing the windshield wipers, then pull up to remove the wipers.
- e. Remove the remaining plastic push-clips from the front of the Cowl Panel.
- f. Remove the Cowl Panel from the vehicle.
- g. Remove the rubber seal on the driver's side of the Cowl Panel.
- h. Separate the left and right side of the Cowl Panel.
- i. Cut the Cowl Panel so it looks as shown below in *Figure 4*. The next page shows what it will look like after cut, *Figure 5*.

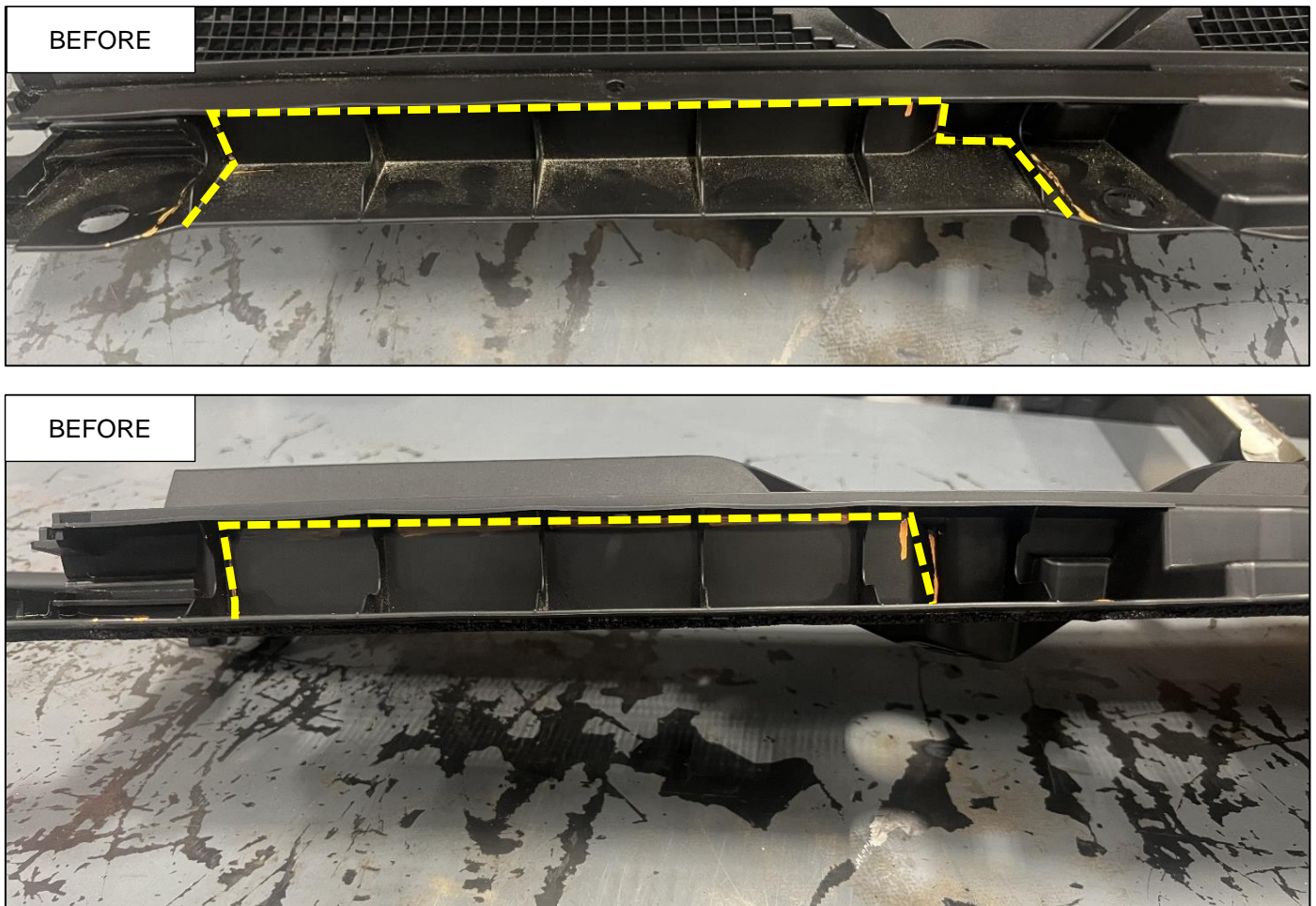


Figure 4

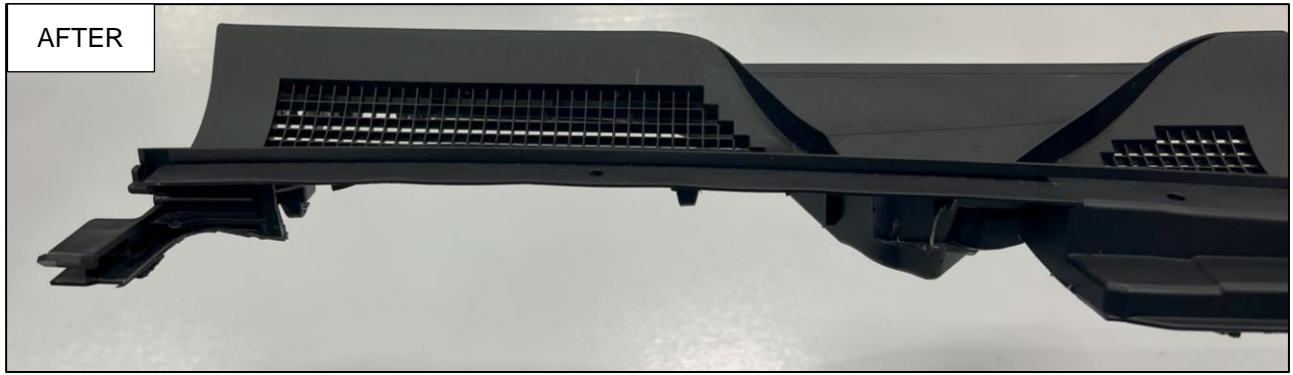


Figure 5

6. Locate the Rear Mounting Spacer. Position the Spacer onto the studs above the center of the firewall with the drain grooves on the bottom. *Figure 6.*

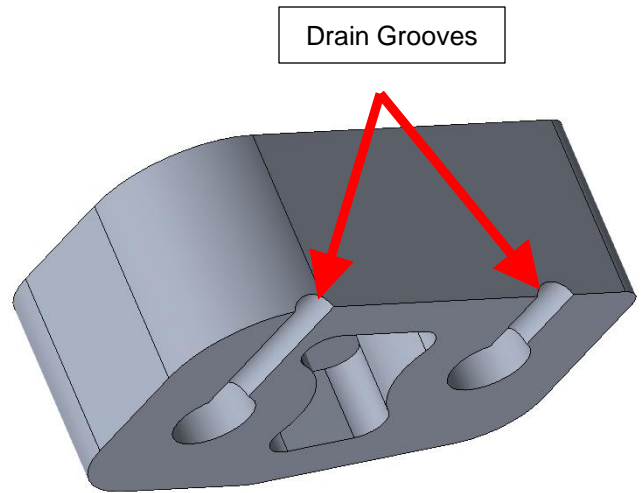
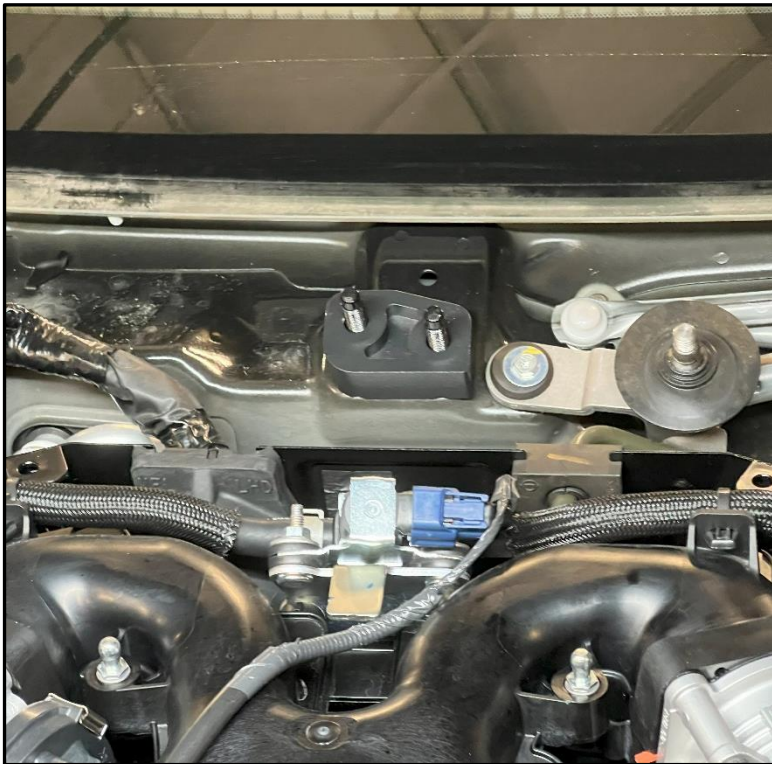


Figure 6

7. Prior to positioning the Strut Tower Brace, trimming of the Evaporator Purge Solenoid Hoses are required to prevent rubbing on the Strut Tower Brace and to prevent in-cabin noise. Disconnect the hoses and trim as indicated in the following steps:

a. Trim **1in** off the Right-Hand Side, as shown below in *Figure 7*.



Figure 7

b. Trim **5/8in** off on Left Hand Side, as shown below in *Figure 8*.

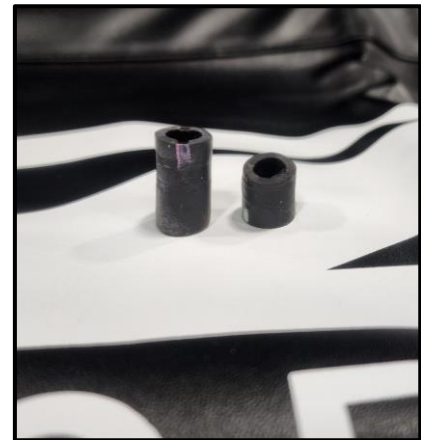


Figure 8

- c. Remove and dispose of the Right-Hand Side Hose loop zip tie that secures the hose to the upper plenum. *Figure 9.*



Figure 9

8. Position the Z1 Aluminum Strut Brace onto vehicle. *Figure 7.*



9. Loosely secure the rear of the brace to the spacer installed in *Step 6* with the (2) two provided M10 flange bolts.
10. Secure the sides of the Strut Brace to the OE mounting locations using the OE nuts and bolts.
11. Go back and torque all nuts and bolts to **38 ft-lbs.**
12. Reinstall the trim pieces and rubber seals in reverse order or removal.
13. Check vehicle for loose tools/items.
14. Lower hood of vehicle.
15. Take vehicle for a final test drive.

END

Additional Technical Support:

Contact Z1 Motorsports at info@z1motorsports.com

Or call 770-838-7777 between 9am and 6pm ET