

Z1 CARBON FIBER STRUT TOWER BRACE INSTALLATION MANUAL



This Installation Manual is intended for the following models:

2009-2020	Nissan 370Z
2023+	Nissan Z

PROLOGUE:

Study these instructions completely before proceeding to assembly. The installer must have a thorough knowledge of automotive systems operation. If unfamiliar with any of the concepts outlined in this instruction, we recommend the installation be completed by a qualified professional.

WARNING!

Extreme caution should be taken when performing maintenance or performance upgrades to your vehicle. Please observe and abide by any Warning or Caution labels placed on the various components and tools used when servicing your vehicle. If you have any questions regarding installation or the various components included with the Z1 Motorsports Carbon Fiber Strut Tower Brace, consult with a Professional Mechanic or contact Z1 Motorsports for more information.

PARTS INCLUDED:

Item	Quantity	Description
1	1	Z1 Carbon Fiber Strut Brace
2	1	Rear Mounting Spacer Bracket
3	2	M10 x 20mm Flange Bolt
4	2	M10 Flange Nut
Right Hand Drive Option Will Receive:		
5	1	RHD Carbon Brace Firewall Bracket

TOOLS REQUIRED:

- Ratchet w/ Extension(s)
- 14mm Socket/Wrench
- Torque Wrench
- Channel Lock Pliers
- Flat-head Screwdriver
- Snips / Body Saw

SAFETY REQUIREMENTS:

- Always wear safety glasses and any necessary protective garments. If using any fluids, chemicals, or solvents, a respirator is recommended.
- Always turn the ignition to the OFF position and disconnect the **NEGATIVE** battery terminal.
- Always use properly rated jack stands when working under your vehicle.
- Always keep limbs and parts away from moving drivetrain parts.
- Only operate drivetrain in safe space and well-ventilated areas.

BEFORE YOU BEGIN:

Remove contents from the Z1 Motorsports Carbon Fiber Strut Tower Brace box and verify that **ALL** necessary hardware/parts are present.

PROCEDURE:

1. Place the transmission in Park position (or in Reverse gear if equipped with a manual transmission). Apply the parking brake.
2. Raise vehicle's hood.
3. If equipped, remove the OE strut brace.
 - a. For 370Z owners:
 - i. Remove the center cowl panel cover by removing the rubber seal and the (2) push-clips, then pulling up. The push-clips locations are shown with arrows to the right.
 - ii. Remove the (2) bolts and (1) nut securing the sides of the strut brace to the strut towers. Retain the hardware as it will be reused later.
 - iii. Remove the (2) nuts securing the rear of the strut brace to the studs above the firewall.
 - iv. Remove OE strut brace.

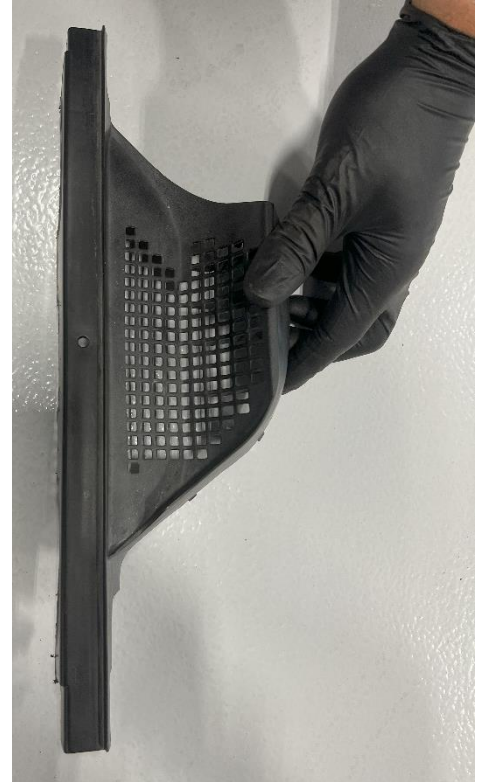


- b. For New Z owners:
 - i. Remove the (2) bolts and (1) nut securing the sides of the strut brace to the strut towers. Retain the hardware as it will be reused later.
 - ii. Remove the OE strut brace.

4. For 370Z owners:

- a. Using a body saw or snips, cut the protruding section on the front of the center cowl section off (as shown below).

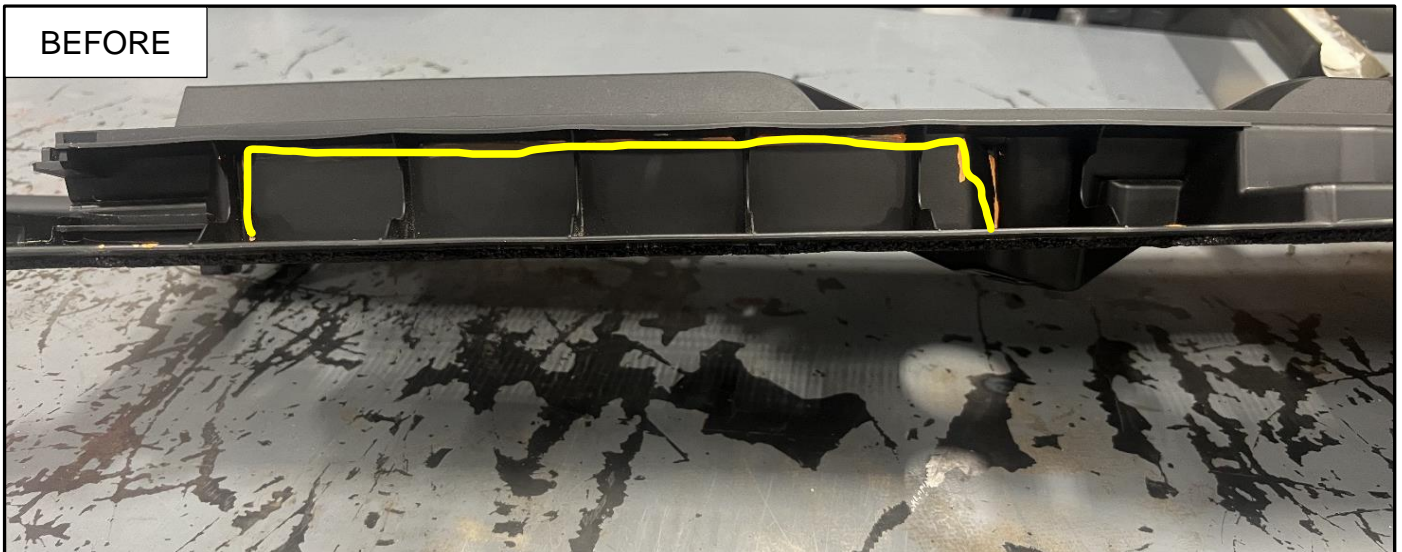
5. For New Z owners:

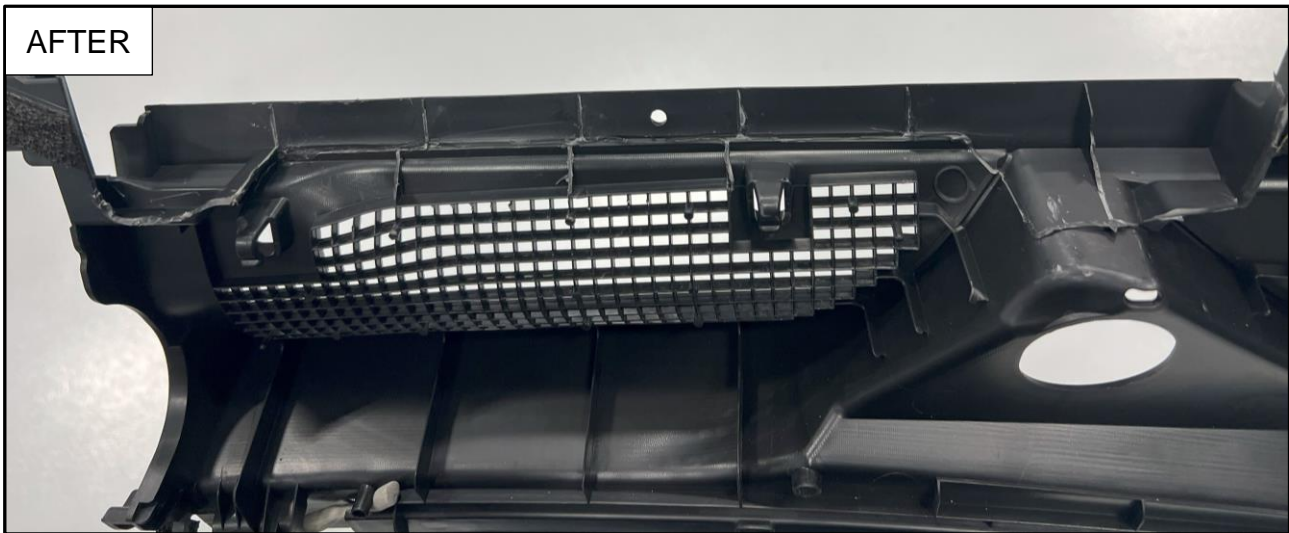
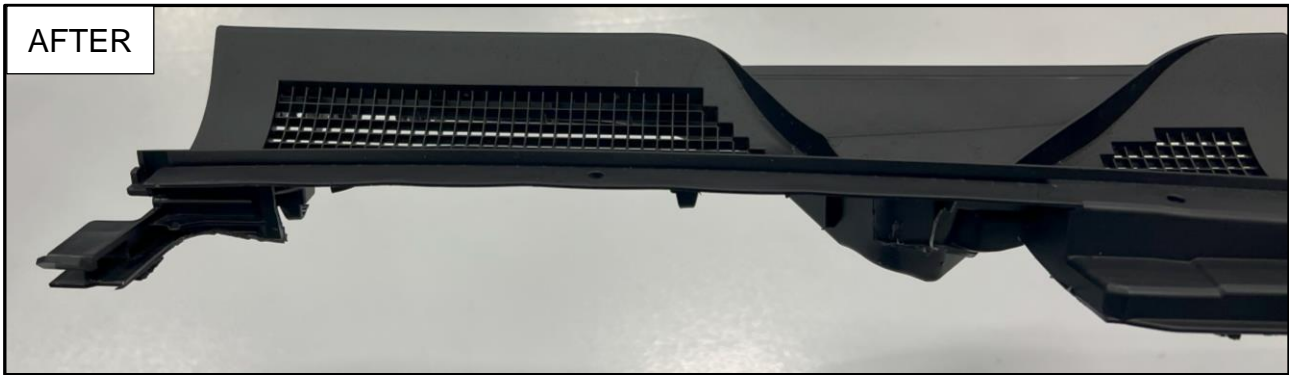


- a. The center cowl section on the New Z is attached to the driver side of the cowl panel and requires the removal of both windshield wipers and both the brake and battery compartments covers.
- b. Remove the covers over the brake and battery compartments.
- c. Using a flat-head screwdriver or plastic push-clip removal tool, remove the push-clips securing the brake and battery compartment's outer covers.



- d. Remove the covers on the windshield wipers.
- e. Using a 19mm socket, remove the nuts securing the windshield wipers, then pull up to remove the wipers.
- f. Remove the remaining plastic push-clips from the front of the cowl panel.
- g. Remove the cowl panel from the vehicle.
- h. Remove the rubber seal on the driver's side of the cowl panel.
- i. Separate the left and right side of the cowl panel.
- j. Cut the cowl panel so it looks as shown below. The next page shows what it will look like after cut.

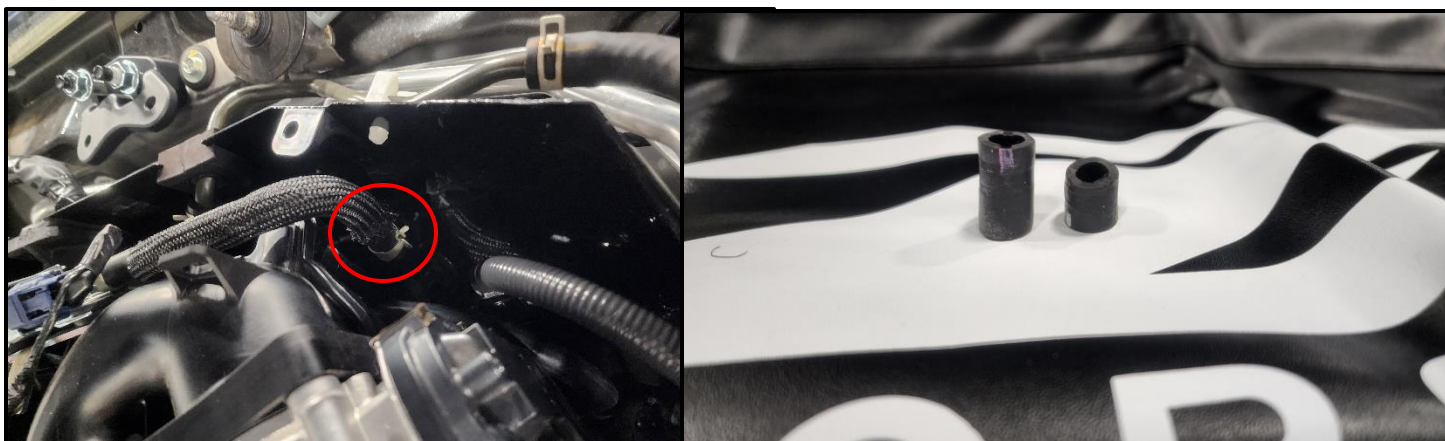




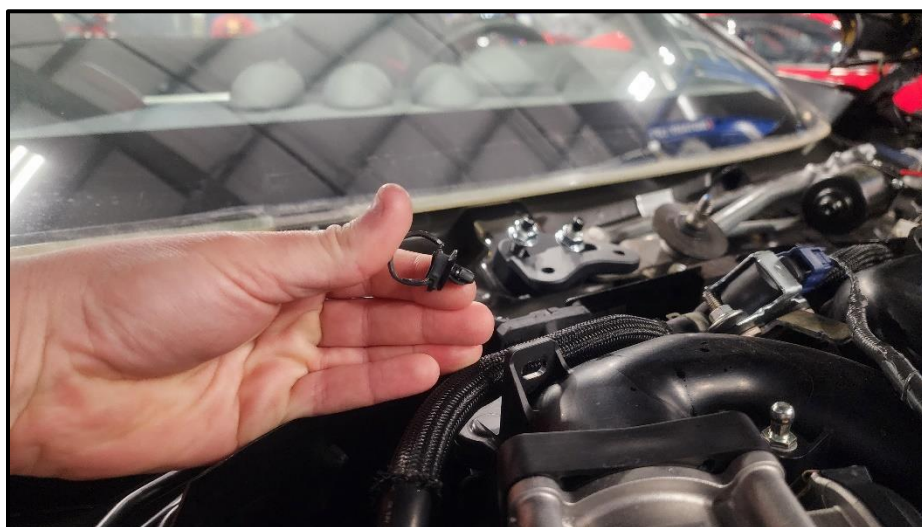
6. Locate the rear mounting spacer bracket.
7. Position the spacer onto the studs above the center of the firewall. Loosely secure the spacer to the studs with the (2) provided M10 flange nuts.
Note: Customers who purchased the RHD option will receive (2) spacers, both the LHD and RHD spacer. The picture on the following page shows the left-hand drive version. Only one will work, if the first spacer you try doesn't fit, use the other one.
8. Prior to positioning the strut brace, trimming of the Evaporator Purge Solenoid Hoses are required to prevent rubbing on the strut tower brace and to prevent in-cabin noise. Disconnect the hoses and trim as indicated in the following steps:
 - a. Trim **1in** off RH (right hand) side. (see photo below)



b. Trim **5/8in** off on LH (left hand) side. (see photo below)



c. Remove and dispose of the RH side hose loop zip tie that secures the hose to the upper plenum.



9. Position the Z1 Carbon Fiber Strut Brace onto vehicle.
10. Loosely secure the rear of the brace to the spacer installed in step # 7 with the (2) provided M10 flange bolts.
11. Secure the sides of the strut brace to the OE mounting locations using the OE nuts and bolts.
12. Go back and torque all nuts and bolts to **38ft-lbs.**
13. Reinstall the trim pieces and rubber seals in reverse order of removal.
14. Remove and account for tools from engine bay.
15. Lower hood of vehicle.
16. Take vehicle for a final test drive.

END

Additional Technical Support:
Contact Z1 Motorsports at info@z1motorsports.com
Or call 770-838-7777 between 9am and 6pm ET

