

# Z1 Z34 REAR SUBFRAME TIE BAR INSTALLATION MANUAL



This Installation Manual is intended for the following models:	
2009-2020	Nissan 370Z
2023+	Nissan Z
2007-2008	Infiniti G35 Sedan
2008-2013	Infiniti G37 Coupe
2009-2013	Infiniti G37 Sedan
2014-2015	Infiniti Q40
2014-2015	Infiniti Q60

## PROLOGUE:

Study these instructions completely before proceeding to assembly. The installer must have a thorough knowledge of automotive systems operation. If unfamiliar with any of the concepts outlined in this instruction, we recommend the installation be completed by a qualified professional.

## WARNING!

Extreme caution should be taken when performing maintenance or performance upgrades to your vehicle. Please observe and abide by any Warning or Caution labels placed on the various components and tools used when servicing your vehicle. If you have any questions regarding installation or the various components included with the Z1 Motorsports Z34 Rear Subframe Tie Bar, consult with a Professional Mechanic or contact Z1 Motorsports for more information.

## **PARTS INCLUDED:**

Item	Quantity	Description
1	1	Z1 Z34 Rear Subframe Tie Bar
2	3	M8 x 20mm Flange Bolt

## **TOOLS REQUIRED:**

- Hydraulic Jack
- (2) 2-Ton (or greater) Jack Stands
- Ratchet
- Ratchet Extension(s)
- 12mm Socket/Wrench
- 17mm Socket/Wrench
- 19mm Socket/Wrench
- Torque Wrench

## **SAFETY REQUIREMENTS:**

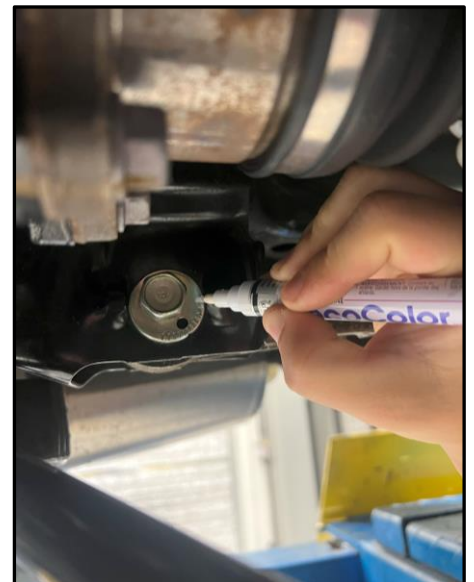
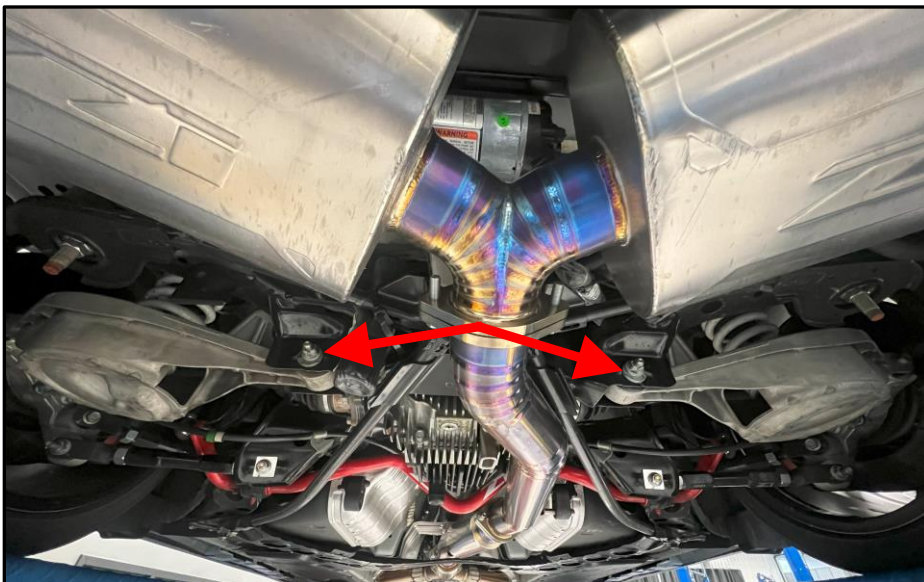
- Always wear safety glasses and any necessary protective garments. If using any fluids, chemicals, or solvents, a respirator is recommended.
- Always turn the ignition to the OFF position and disconnect the NEGATIVE battery terminal.
- Always use properly rated jack stands when working under your vehicle.
- Always keep limbs and parts away from moving drivetrain parts.
- Only operate drivetrain in safe space and well-ventilated areas.

## **BEFORE YOU BEGIN:**

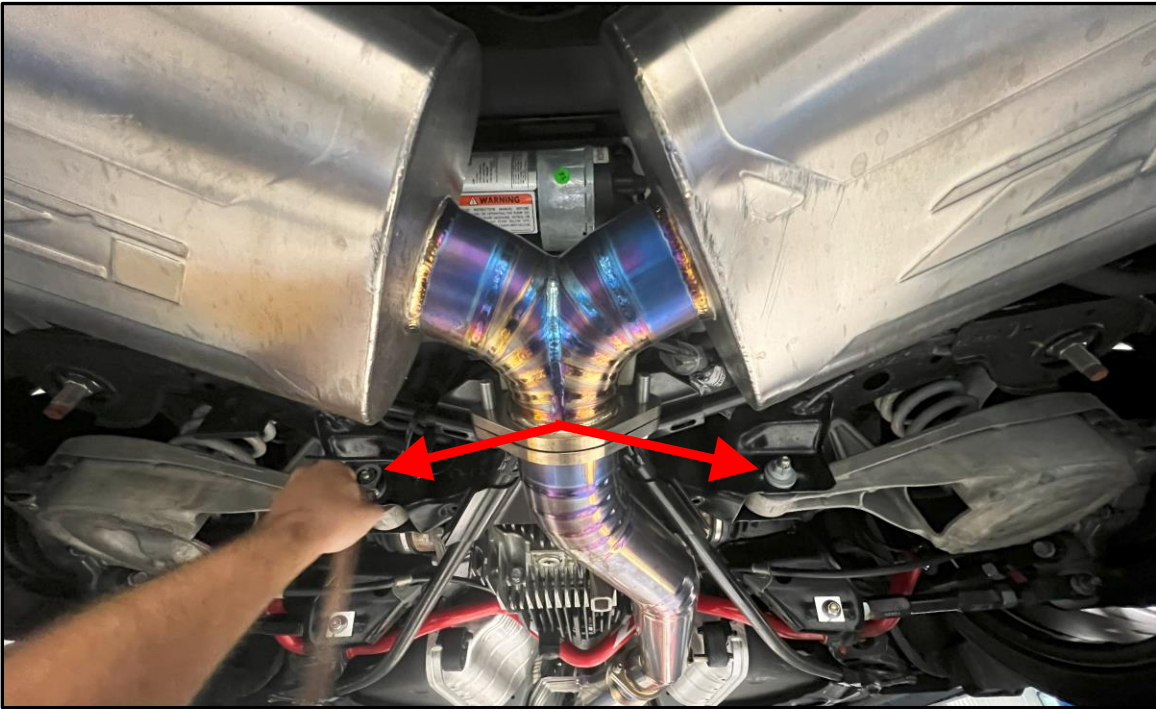
Remove contents from the Z1 Motorsports Z34 Rear Subframe Tie Bar and verify that ALL necessary hardware is present.

## **PROCEDURE:**

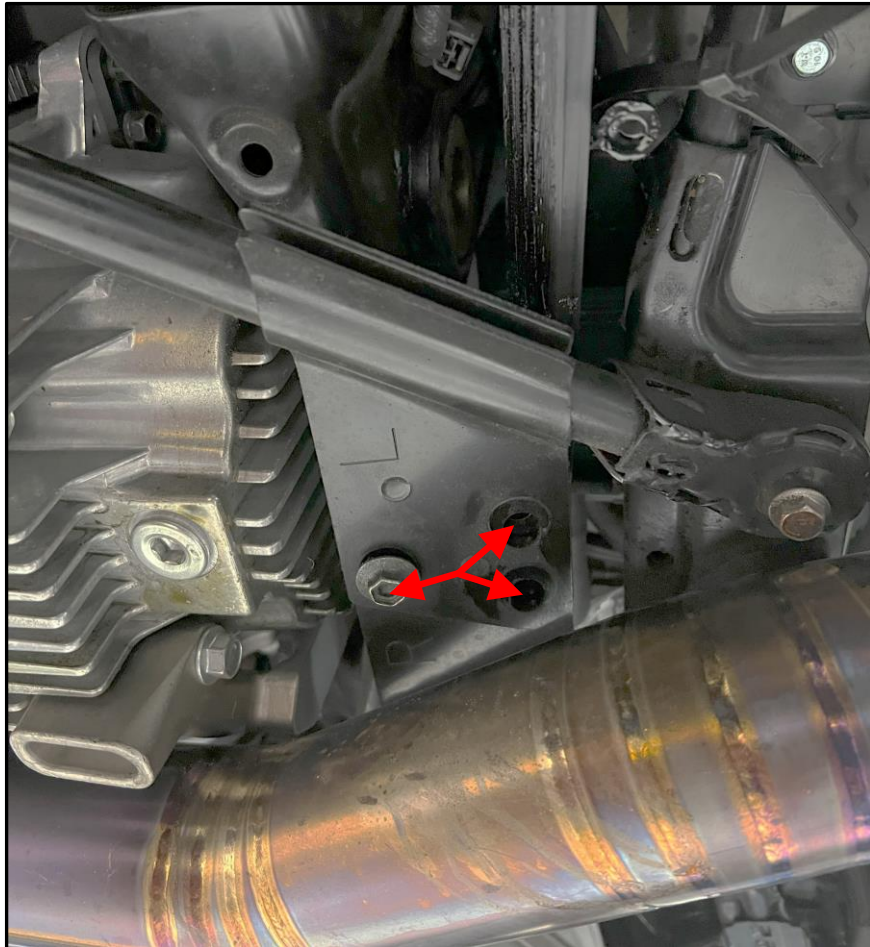
1. Place the transmission in Park position (or in Reverse gear if equipped with a manual transmission). Apply the parking brake.
2. Locate proper jacking points on vehicle's chassis (refer to vehicle's Owner Manual). Raise and support vehicle using jack & jack stands.
3. If you are not running eccentric lockout plates on the rear toe arms, mark your eccentric bolts/washer with a paint pen (shown below with arrows).



4. Remove the (2) nuts securing the toe arm bolts.

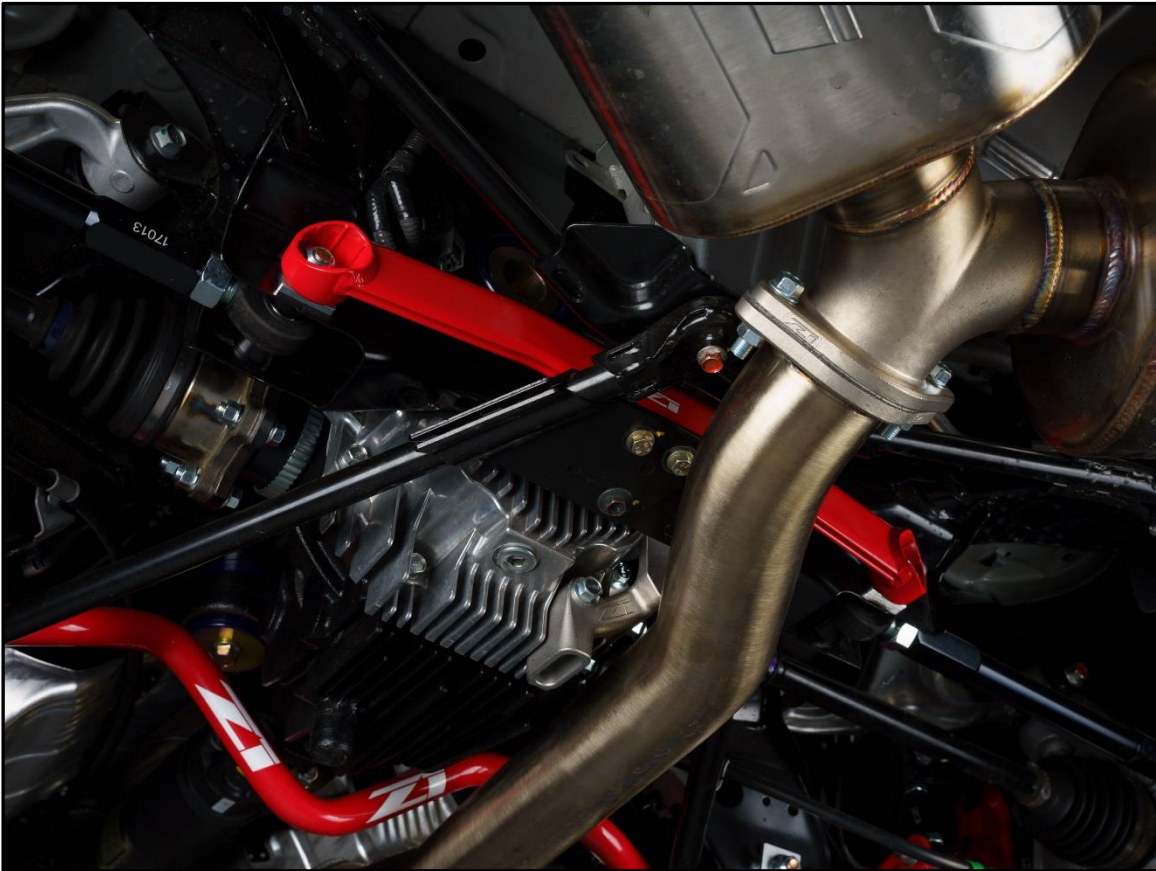


5. On Z's, remove the rear cross brace bolts behind the rear differential. Replace bolts with the provided M8 x 20mm flange bolts. Torque bolts to 24ft-lbs. Only the back (2) are required to be replaced for clearance, but (3) bolts are provided if you would like to change all (3) of them.





6. Position the Z1 Rear Subframe Tie Bar onto the toe arm bolts. Secure with the nuts removed in step # 4. Torque nuts to 54-lbs.



7. If using eccentric bolts/washer, check the paint pen mark from earlier to ensure your alignment did not move.
8. Properly lower vehicle from jack and jackstands.
9. Take vehicle for a test drive.

**END**

**Additional Technical Support:**  
Contact Z1 Motorsports at [info@z1motorsports.com](mailto:info@z1motorsports.com)  
Or call 770-838-7777 between 9am and 6pm ET