

Z1 Z34 SINGLE CATCH CAN KIT INSTALLATION MANUAL



This Installation Manual is intended for the following models:	
2009-2020	Nissan 370Z
2008-2015	Infiniti G37/Q60 Coupe
2009-2015	Infiniti G37/Q40 Sedan

PROLOGUE:

Study these instructions completely before proceeding to assembly. The installer must have a thorough knowledge of automotive systems operation. If unfamiliar with any of the concepts outlined in this instruction, we recommend the installation be completed by a qualified professional.

WARNING!

Extreme caution should be taken when performing maintenance or performance upgrades to your vehicle. Please observe and abide by any Warning or Caution labels placed on the various components and tools used when servicing your vehicle. If you have any questions regarding installation or the various components included with the Z1 Motorsports Z34 Single Catch Can Kit, consult with a Professional Mechanic, or contact Z1 Motorsports for more information.

Item	Quantity	Description
1	1	Catch Can
2	3	M4 x 0.7 Screw, 8mm
3	1	Catch Can Bracket
4	1	Line Kit
5	1	M18 to 14.5mm Straight Barb
6	1	M6 Bolt
7	4	M18 Aluminum Crush Washer
8	2	Hose Clamp

TOOLS REQUIRED:

- Hydraulic Jack
- (2) 2-Ton (or greater) Jack Stands
- Ratchet
- Ratchet Extension(s)
- Assorted Metric Wrenches
- Assorted Metric Sockets
- Pliers
- 8mm Hex Socket/Wrench

SAFETY REQUIREMENTS:

- Always wear safety glasses and any necessary protective garments. If using any fluids, chemicals, or solvents, a respirator is recommended.
- Always turn the ignition to the OFF position and disconnect the NEGATIVE battery terminal.
- Always use properly rated jack stands when working under your vehicle.
- Always keep limbs and parts away from moving drivetrain parts.
- Only operate drivetrain in safe space and well-ventilated areas.

BEFORE YOU BEGIN:

Remove contents from the Z1 Motorsports Z34 Single Catch Can Kit and verify that ALL necessary hardware is present.

PROCEDURE:

1. Place the transmission in Park position (or in Reverse gear if equipped with a manual transmission). Apply the parking brake.
2. Locate proper jacking points on vehicle's chassis (refer to vehicle's Owner Manual). Raise and support vehicle using jack & jack stands.
3. Open and support the hood of the vehicle.
4. Remove the (2) two OE PCV hoses from the Intake Manifold and the PCV Valves on the Valve Cover.
Figure 1.

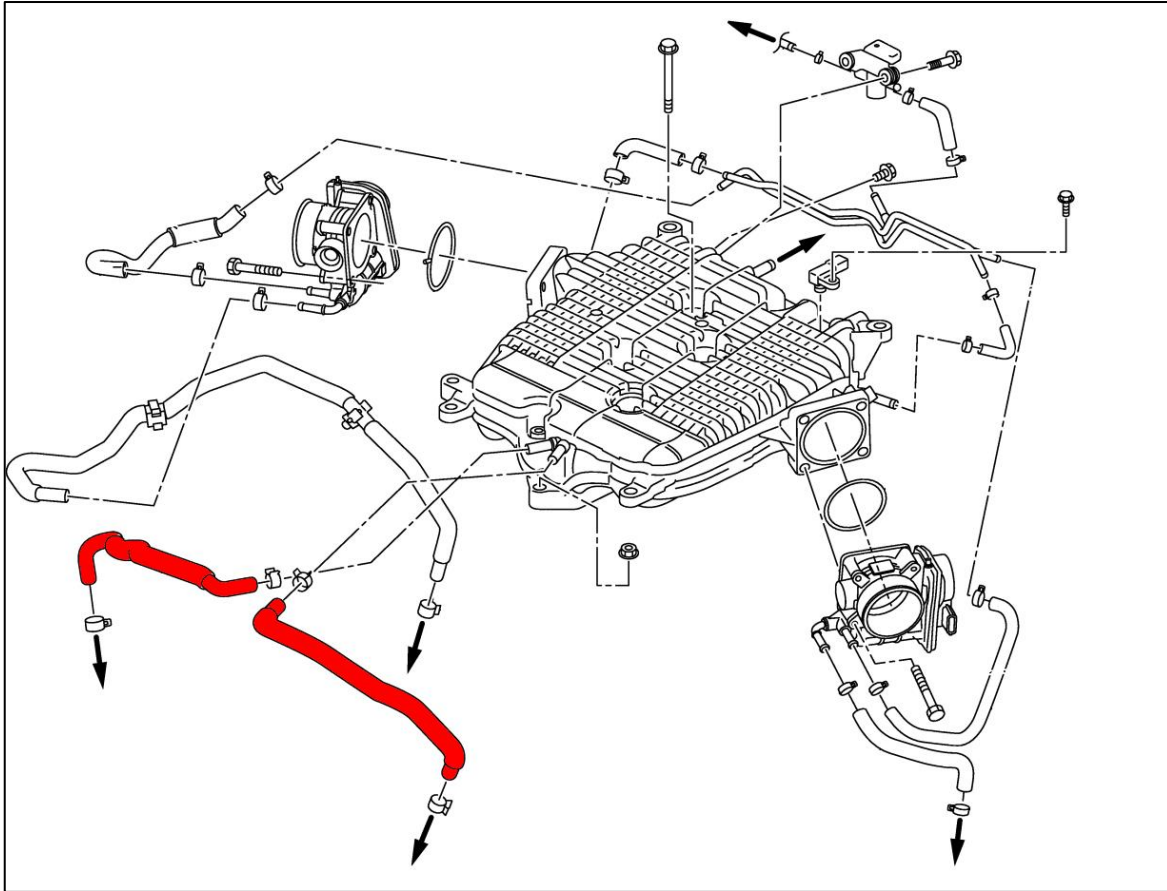


Figure 1

5. Locate the Z1 Catch Can, (1) one Crush Washer and the Barb Fitting. Place the Washer on the threads of the Barb Fitting, then install the Barb Fitting into the side of the Catch Can. *Figure 2*.

NOTE: The Figure below shows the top Banjo Bolt already installed, do not install this fitting at the moment, it will have to be installed after the Catch Can Bracket has been installed.

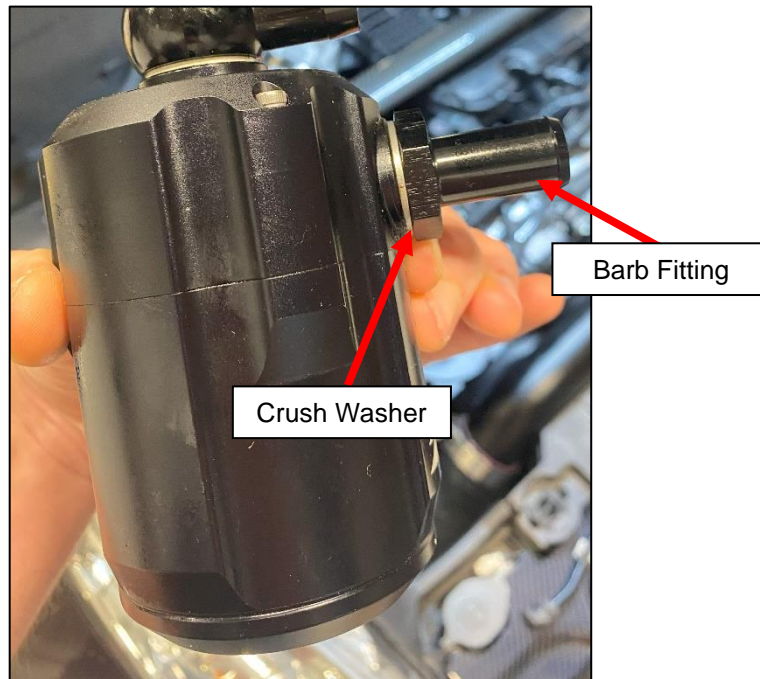


Figure 2

6. Locate the Z1 Catch Can, Catch Can Bracket, and (3) three M4 x 0.7 Screws, 8mm. Position the Cath Can Bracket on the top of the Catch Can and secure it with the 3 Screws, as shown below. Make sure to note the orientation of the Barb Fitting on the side of the Catch Can. *Figure 3*.

NOTE: The Figure below shows the Catch Can installed into the vehicle, this will be done in a later step.



Figure 3

7. Locate the Banjo Bolt, Banjo Fitting, and (2) two Crush Washers. Install the Banjo Bolt with a Crush Washer through the Banjo Fitting and install the other Crush Washer on the other side. Loosely thread this assembly into the top of the Catch Can. *Figure 4*.

NOTE: The Catch Can Bracket is not installed in the Figure below.

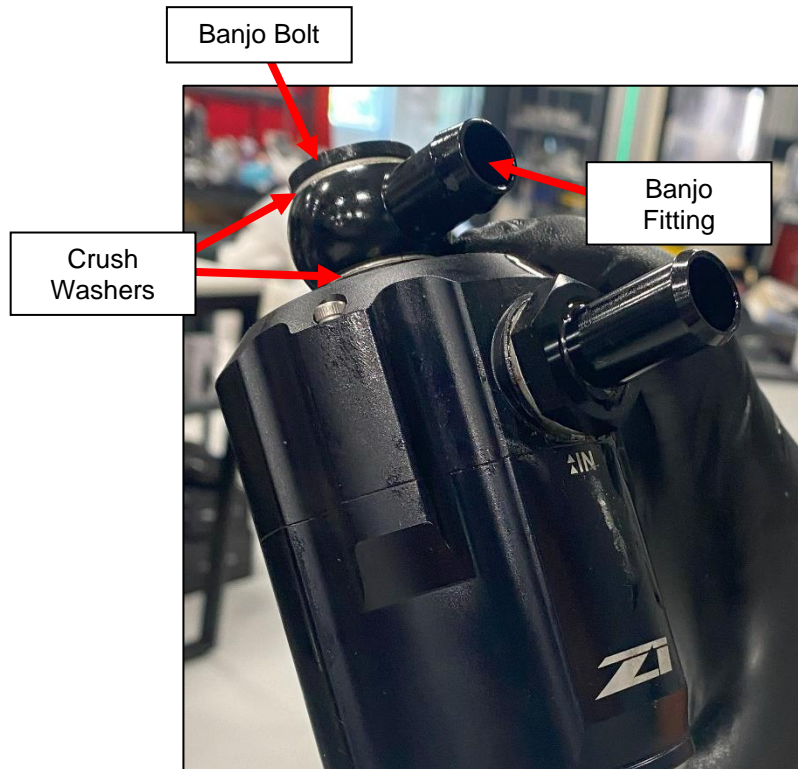


Figure 4

8. If you are installing the [Catch Can Drain Kit](#), install it now.
9. Position the Catch Can Assembly in the Vehicle near the Power Steering Reservoir as shown below. Make sure the Barbed Fittings are positioned as shown. Secure the Bracket with the OE Bolt in that position or use the new provided M6 Bolt. *Figure 5.*

NOTE: The top Banjo Bolt and Fitting is not installed in the Figure below.



Figure 5

10. Locate the Return Line Hose. Place the Forked end on the (2) two Intake Manifold Ports. Run the other end of the Hose under the Intake Tube and towards the Catch Can. *Figure 6.*

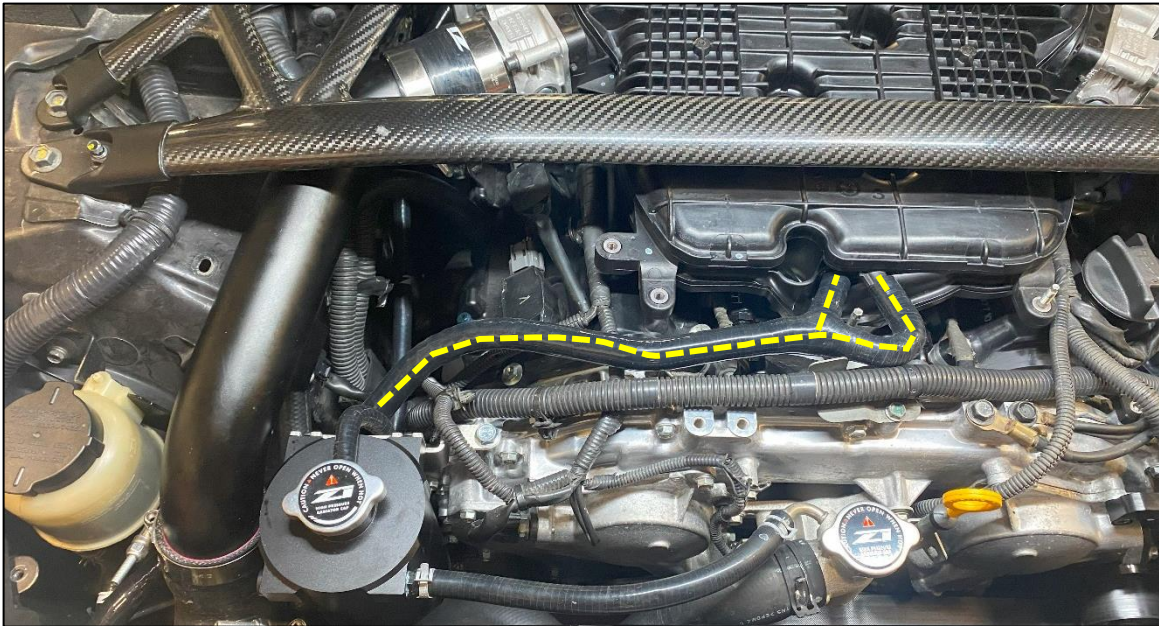


Figure 6

11. Locate the Feed Line Hose. Place the (2) two ends on each PCV Port on each Valve Cover. Run the Other end of the Hose under the Intake Tube towards the Catch Can. *Figure 7.*

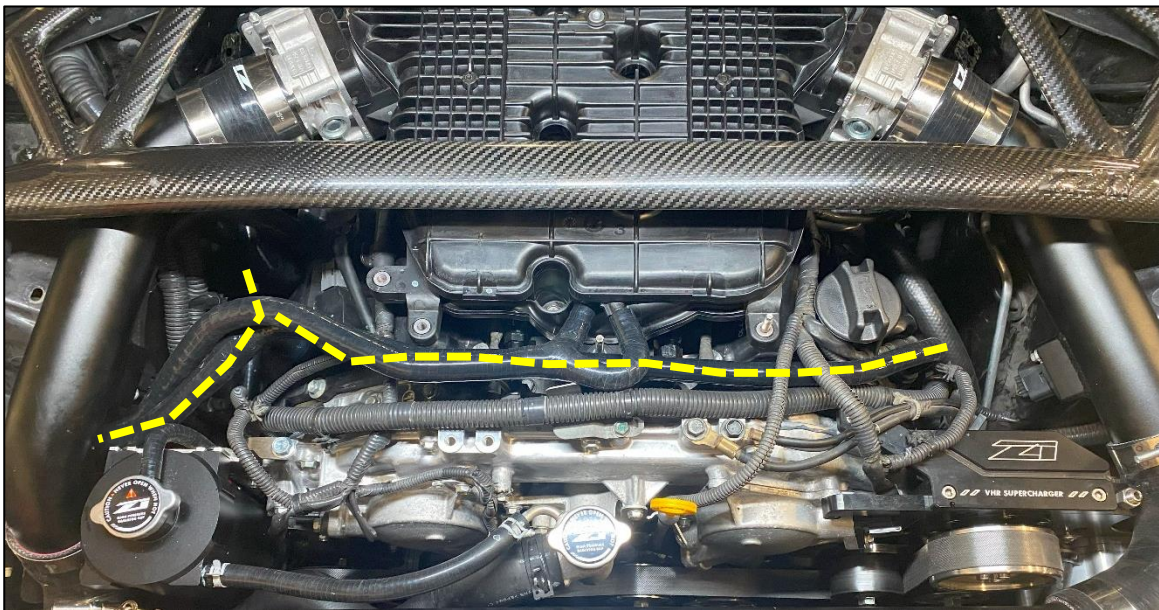


Figure 7

12. Locate (2) two Hose Clamps. Place one on the end of each the Lines installed.
13. Position the Lines on to the Catch Can Ports and secure with the Hose Clamps. The Return Line Hose will connect to the Top Port of the Catch Can, the Feed Line will connect to the Lower Port of the Catch Can.
Figure 8.

NOTE: The Catch Can Bracket is not installed in the Figure below.

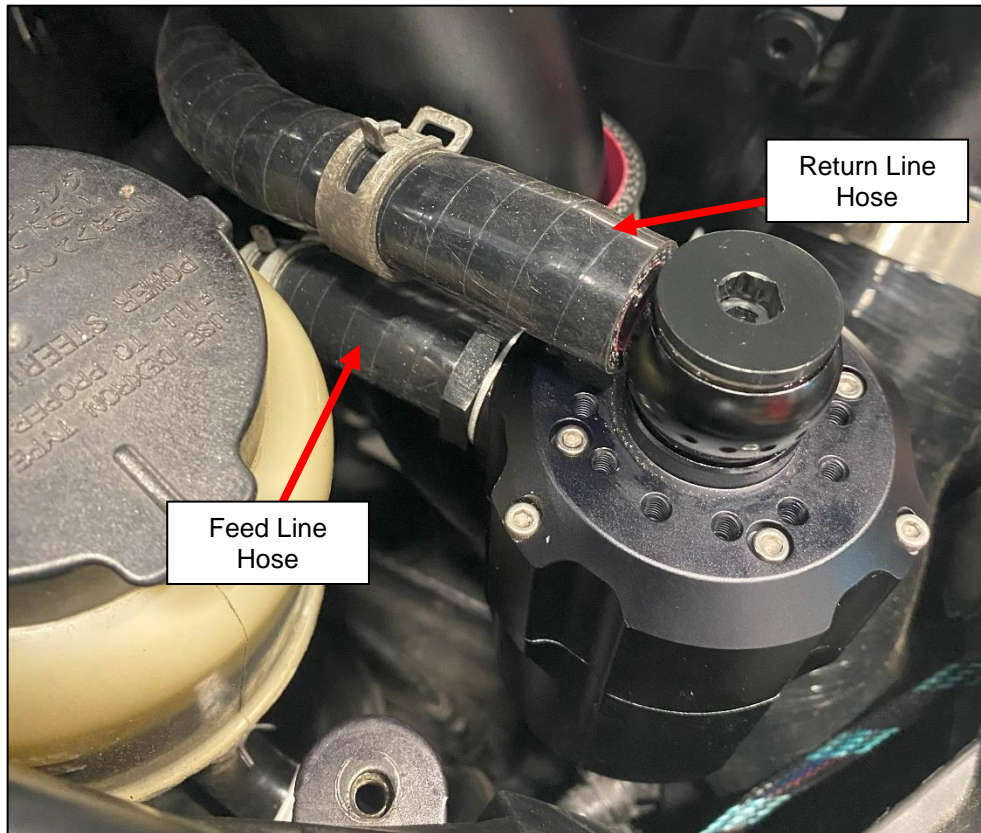


Figure 8

END

Additional Technical Support:
Contact Z1 Motorsports at info@z1motorsports.com
Or call 770-838-7777 between 9am and 6pm ET