

Z1 Z LOW PROFILE WASHER FLUID RESERVOIR INSTALLATION MANUAL



This Installation Manual is intended for the following models:

2023+

Nissan Z

PROLOGUE:

Study these instructions completely before proceeding to assembly. The installer must have a thorough knowledge of automotive systems operation. If unfamiliar with any of the concepts outlined in this instruction, we recommend the installation be completed by a qualified professional.

WARNING!

Extreme caution should be taken when performing maintenance or performance upgrades to your vehicle. Please observe and abide by any Warning or Caution labels placed on the various components and tools used when servicing your vehicle. If you have any questions regarding installation or the various components included with the Z1 Motorsports Z Low Profile Washer Fluid Reservoir, consult with a Professional Mechanic, or contact Z1 Motorsports for more information.

PARTS INCLUDED:

Item	Quantity	Description
1	1	Washer Fluid Reservoir
2	1	Filler Bracket
3	1	Washer Filler
4	1	Filler Hose
5	1	Washer Cap
6	1	Washer Cap Coin
7	1	OE Fluid Level Sensor
8	2	M5 x 0.8 Socket Head Screw, 6mm
9	2	Hose Clamp

TOOLS REQUIRED:

- Hydraulic Jack
- (2) 2-Ton (or greater) Jack Stands
- Ratchet
- Ratchet Extension(s)
- Assorted Metric Wrenches
- Assorted Metric Sockets
- Torque Wrench
- Pliers

SAFETY REQUIREMENTS:

- Always wear safety glasses and any necessary protective garments. If using any fluids, chemicals, or solvents, a respirator is recommended.
- Always turn the ignition to the OFF position and disconnect the NEGATIVE battery terminal.
- Always use properly rated jack stands when working under your vehicle.
- Always keep limbs and parts away from moving drivetrain parts.
- Only operate drivetrain in safe space and well-ventilated areas.

BEFORE YOU BEGIN:

Remove contents from the Z1 Motorsports Z Low Profile Washer Fluid Reservoir and verify that ALL necessary hardware is present.

PROCEDURE:

1. Place the transmission in Park position (or in Reverse gear if equipped with a manual transmission). Apply the parking brake.
2. Locate proper jacking points on vehicle's chassis (refer to vehicle's Owner Manual). Raise and support vehicle using jack & jack stands.
3. Open and support the hood of the vehicle.
4. Remove the Front Bumper from the vehicle. Refer to the [Z1 Air to Air Intercooler Installation Manual](#) for detailed instructions.
5. Disconnect the (2) two electrical connectors on the back of the Washer Fluid Reservoir and the Hose from the Reservoir Pump.
6. Remove the (1) one Plastic Clip that secures the Washer Fluid Fill tube to the chassis in the engine bay.
Figure 1.



Figure 1

7. Pull up on the Washer Fluid Fill Tube to remove it from the Washer Fluid Reservoir.

8. Unbolt and remove the Washer Fluid Reservoir from the vehicle. Retain this Hardware. *Figure 2.*



Figure 2

9. Drain the OE Washer Fluid Reservoir into a separate container to prevent spillage in the upcoming steps.

10. Transfer the Fluid Pump from the OE Fluid Reservoir to the new Z1 Low Profile Reservoir. *Figure 3.*



Figure 3

11. Locate the OE Fluid Level Sensor and install it into the bottom of the Z1 Low Profile Reservoir. *Figure 4.*



Figure 4

12. Locate the Filler Hose and (1) one Hose Clamp. Install the Hose onto the neck of the Low-Profile Reservoir and secure with the Hose Clamp. *Figure 5.*

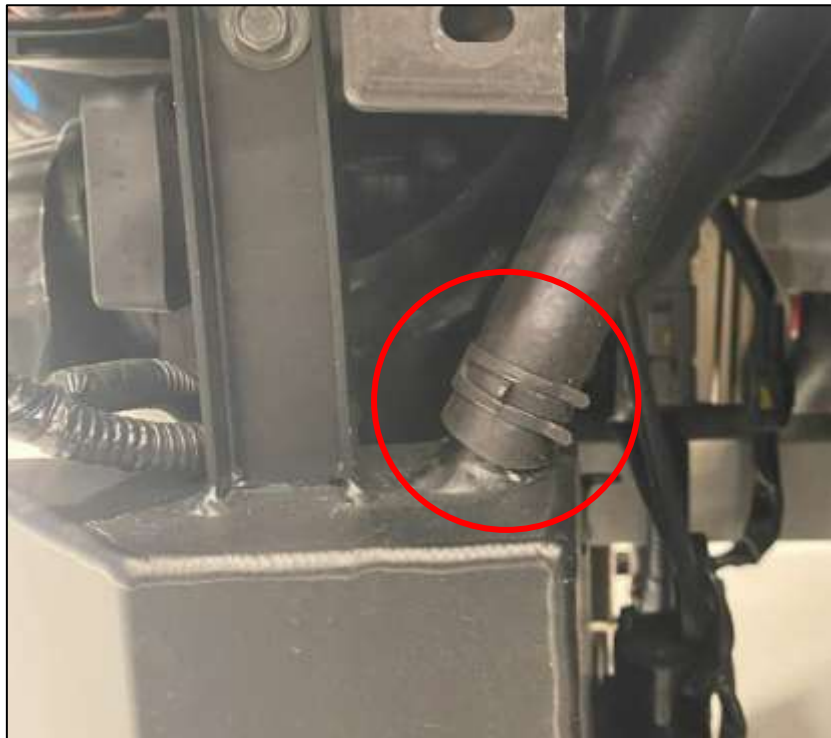


Figure 5

13. Position the Z1 Reservoir into the vehicle and feed the Hose up to the top of the Engine Bay. Secure the Reservoir to the OE Mounting Locations with (2) two OE Bolts removed in Step 8. *Figure 6.*

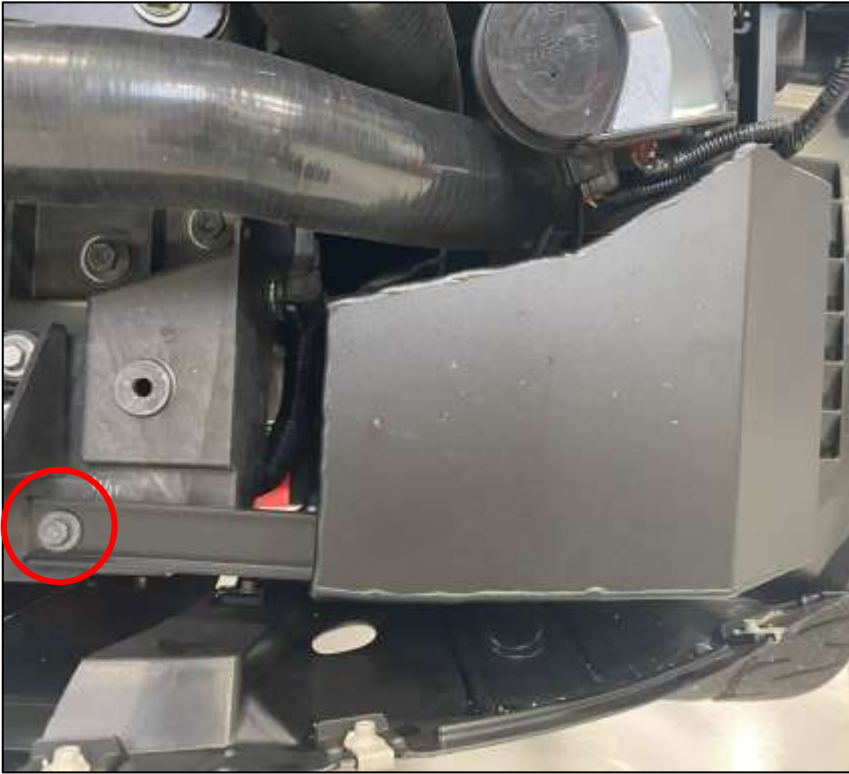


Figure 6

14. Connect the Pump Hose to the Fluid Pump and reconnect both electrical connectors to the Fluid Pump and Level Sensor.

15. Locate the Fluid Fill Port, Filler Bracket and (2) two M5 x 0.8 Socket Head Screws. Attach the Fill Port to the Filler Bracket with the M5 Screws as shown below. *Figure 7.*



Figure 7

16. Place (1) one Hose Clamp over the Filler Hose. *Figure 8.*



Figure 8

17. Insert the Fluid Port Assembly into the Filler Hose and secure with the Hose Clamp installed in *Step 16.*
Figure 9.



Figure 9

18. Using the OEM Bolt, secure the Filler Bracket to the vehicle. *Figure 10.*



Figure 10

19. Locate the Washer Cap and Washer Coin. Install the Washer Cap onto the Fill Port. Once Tight, place the Washer Coin into the Washer Cap. *Figure 11.*



Figure 11

20. Fill the Washer Fluid Reservoir with Washer Fluid and test function of the Fluid Pump and Level Sensor.

21. Reinstall the Front Bumper.

END

Additional Technical Support:

Contact Z1 Motorsports at info@z1motorsports.com

Or call 770-838-7777 between 9am and 6pm ET