

# Z1 Z MASTER CYLINDER BRACE INSTALLATION MANUAL



This Installation Manual is intended for the following models:

2023+

Nissan Z

## PROLOGUE:

Study these instructions completely before proceeding to assembly. The installer must have a thorough knowledge of automotive systems operation. If unfamiliar with any of the concepts outlined in this instruction, we recommend the installation be completed by a qualified professional.

## WARNING!

Extreme caution should be taken when performing maintenance or performance upgrades to your vehicle. Please observe and abide by any Warning or Caution labels placed on the various components and tools used when servicing your vehicle. If you have any questions regarding installation or the various components included with the Z1 Motorsports Z Master Cylinder Brace, consult with a Professional Mechanic, or contact Z1 Motorsports for more information.

## **PARTS INCLUDED:**

Item	Quantity	Description
1	1	Master Cylinder Brace
2	1	M6 x 1.0 Flanged Bolt, 25mm
3	1	M6 x 1.0 Flanged Bolt, 20mm

## **TOOLS REQUIRED:**

- Ratchet
- Ratchet Extension(s)
- Assorted Metric Wrenches
- Assorted Metric Sockets
- Extendable Magnet (Optional)
- Universal Joint Socket Adaptors
- Flex Head Ratcheting Wrenches (Optional)

## **SAFETY REQUIREMENTS:**

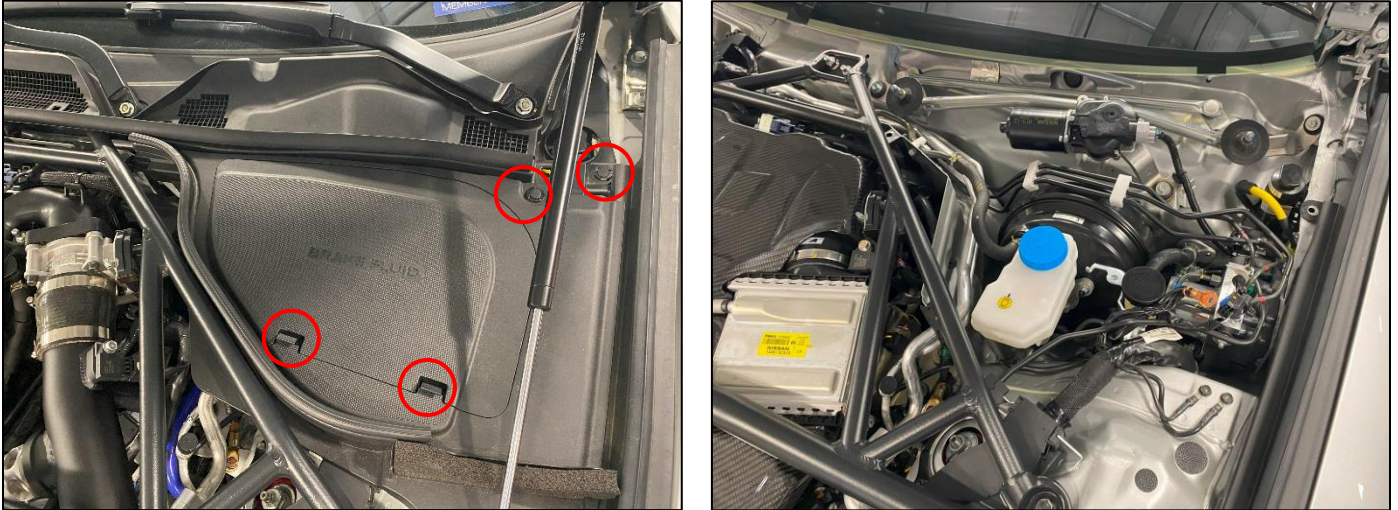
- Always wear safety glasses and any necessary protective garments. If using any fluids, chemicals, or solvents, a respirator is recommended.
- Always turn the ignition to the OFF position and disconnect the NEGATIVE battery terminal.
- Always use properly rated jack stands when working under your vehicle.
- Always keep limbs and parts away from moving drivetrain parts.
- Only operate drivetrain in safe space and well-ventilated areas.

## **BEFORE YOU BEGIN:**

Remove contents from the Z1 Motorsports RZ34 Master Cylinder Brace and verify that ALL necessary hardware is present.

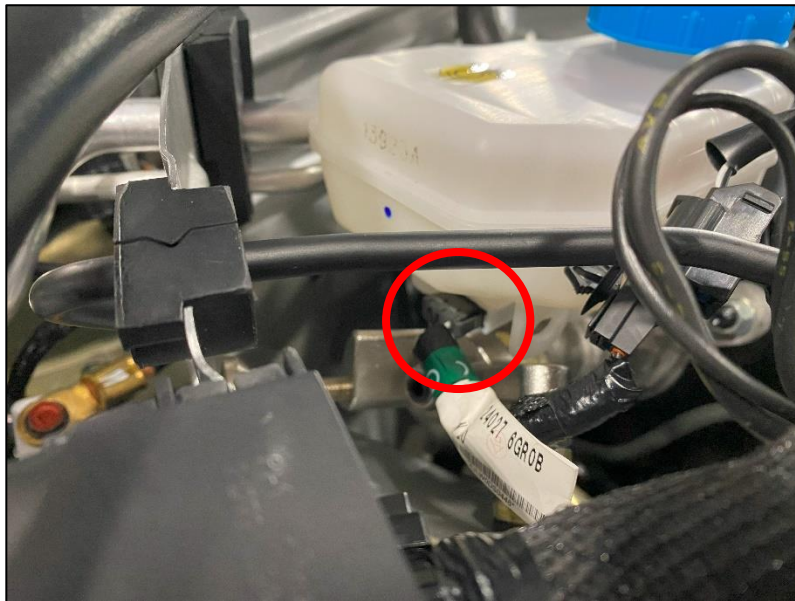
## **PROCEDURE:**

1. Place the transmission in Park position (or in Reverse gear if equipped with a manual transmission). Apply the parking brake.
2. Raise and support the hood of the vehicle.
3. Remove the cover for the Brake Fluid and surrounding trim. It is held on by a few plastic tabs. *Figure 1.*



*Figure 1*

4. Disconnect the Brake Fluid Level Sensor from the Master Cylinder. *Figure 2.*



*Figure 2*

5. If equipped with a Manual Transmission, unbolt the (2) two bolts securing the Clutch Fluid Reservoir Bracket to the Shock Tower. Retain this hardware. *Figure 3.*



Figure 3

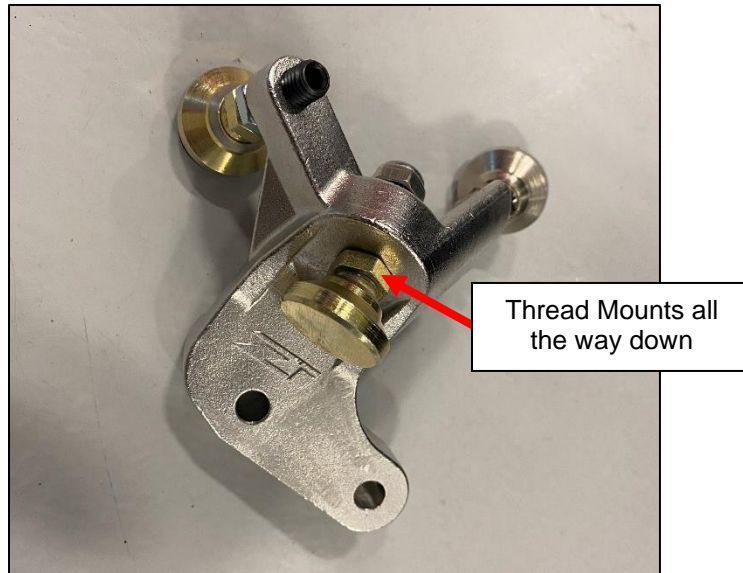
6. Unbolt the (2) two bolts under the Brake Master Cylinder securing the Wiring Harness Grounds to the shock tower. Retain this hardware as it will be reused. *Figure 4.*

**NOTE:** One of our Grounds was already removed.



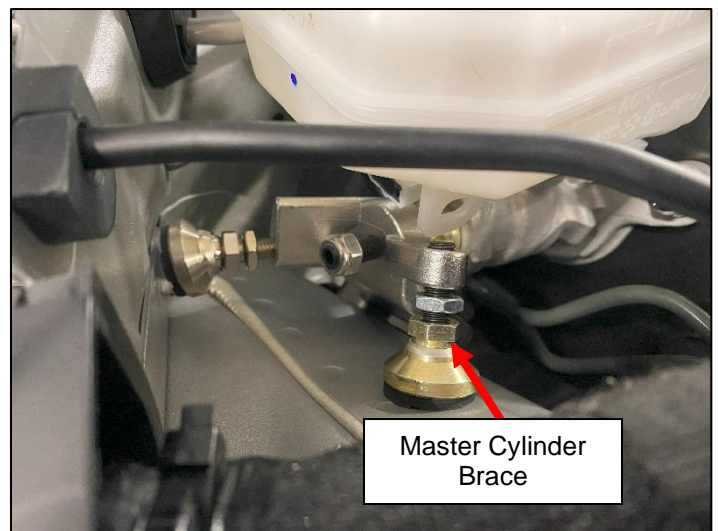
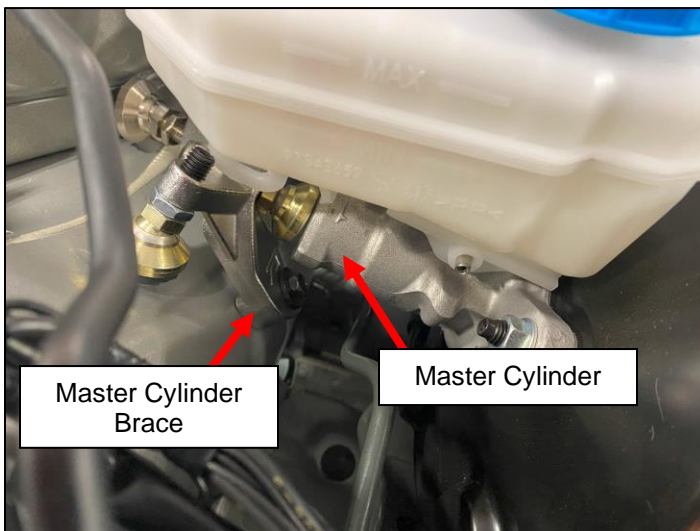
Figure 4

7. Locate the Z1 Master Cylinder Brace and the (2) two M6 x 20mm Bolts. Thread the Mounts all the way down to allow more room to position the brace. *Figure 5.*



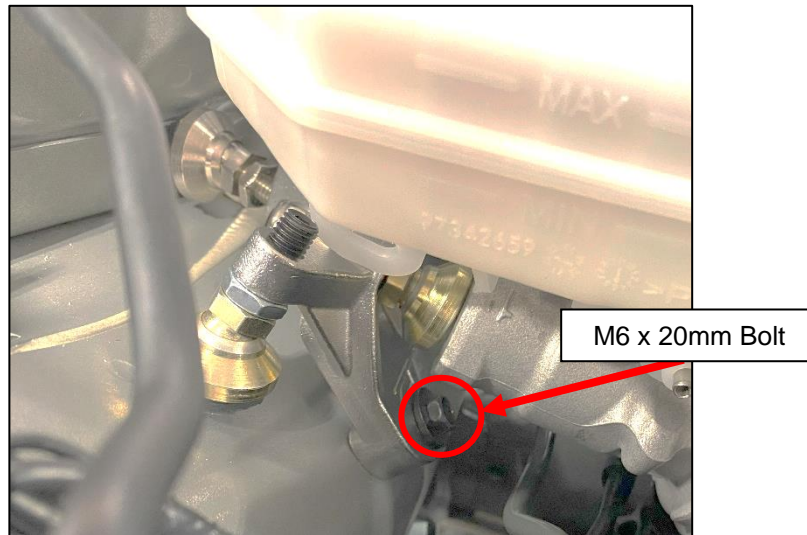
*Figure 5*

8. Position the Master Cylinder Brace as shown below on the two holes where the Grounds removed in *Step 6* were located. *Figure 6.*



*Figure 6*

9. Using the M6 x 25mm and M6 x 20mm Bolts, loosely secure the Z1 Master Cylinder Brace to the Shock Tower. The 25mm bolt will be the most INBOARD (closest to engine), while the 20mm will be the most OUTBOARD (circled below). This step can be very difficult and can be done in multiple ways. Use a combination of Ratchets and Wrenches to slowly thread the bolts into the shock tower. *Figure 7.*



*Figure 7*

10. Once the Master Cylinder Brace is on, position it so the Main Pad closest to the Master Cylinder is centered on the Master Cylinder.
11. Tighten the (2) two M6 x 20mm bolts.
12. Use a wrench to thread the Mounting Pads out to push against the Shock Tower and Master Cylinder.
13. Once positioned accordingly, tighten the jam nuts against the Master Cylinder Brace on the (3) three Mounting Pads. An Allen/Hex Key may be necessary to hold the threaded portion to prevent the middle mounting pad from spinning while threading the nut down. *Figure 8.*



*Figure 8*

14. Using (1) one of the OE Ground Bolts removed in *Step 6*, secure the Larger Ground to the open hole below the Z1 Master Cylinder Brace.

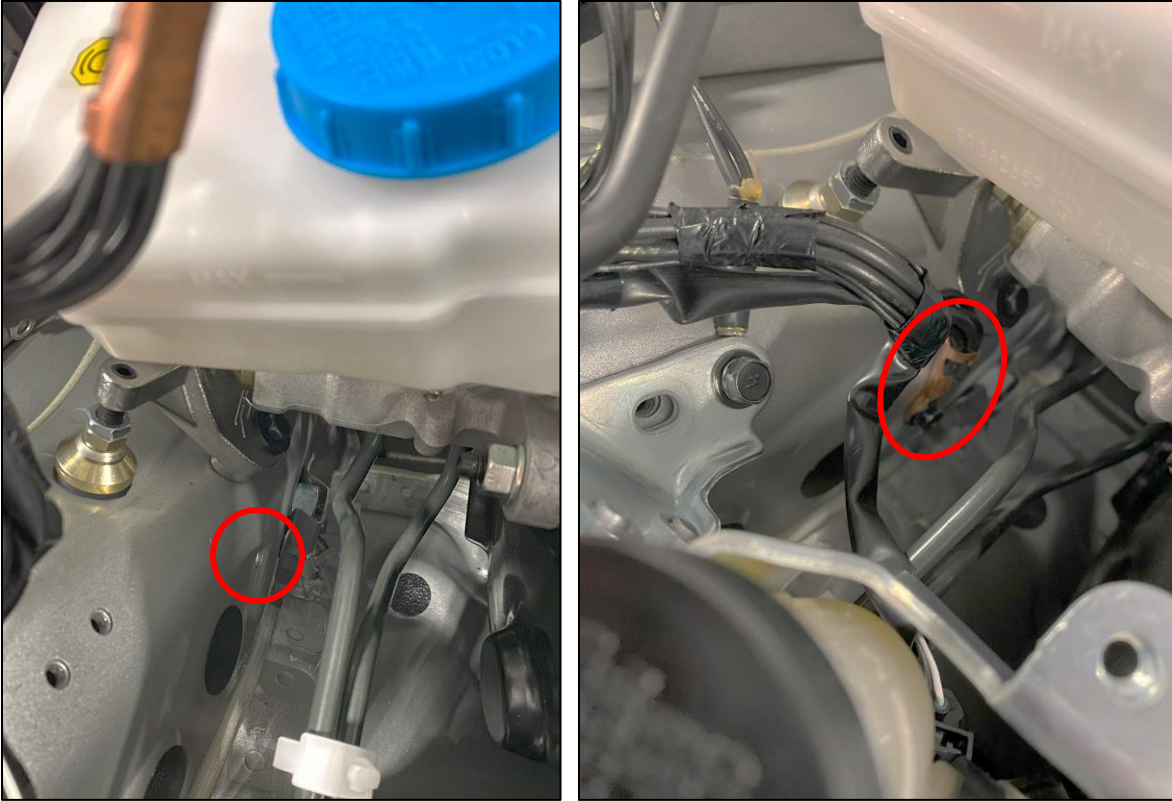


Figure 9

15. Position the Smaller Ground on the mounting holes for the Clutch Fluid Reservoir Bracket. Position the Clutch Fluid Reservoir Bracket over the holes and use the OE Hardware removed in *Step 5* to secure the bracket and Smaller Ground to the Shock Tower.

**NOTE:** If you do not have a Clutch Fluid Reservoir Bracket, use the OE Hardware removed in *Step 6* to secure the Smaller Ground in this same position. *Figure 10*.

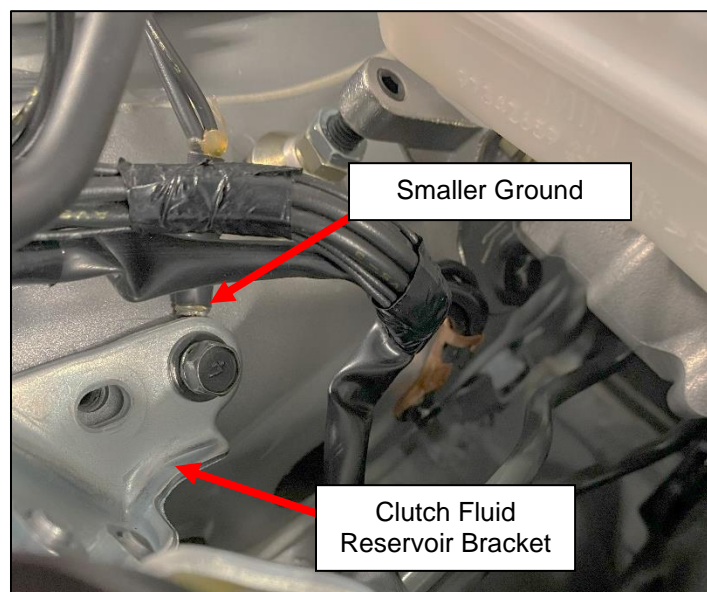


Figure 10

16. Reconnect the Brake Fluid Level Sensor to the Brake Master Cylinder.
17. Test the movement of the of the Brake Master Cylinder by pressing on the brakes with the Key ON. If the Master Cylinder still moves, tighten the Pads on the Master Cylinder Brace as necessary.
18. Reinstall the trim and Brake Master Cylinder Cover.
19. Take your car for a test drive.

**END**

**Additional Technical Support:**  
Contact Z1 Motorsports at [info@z1motorsports.com](mailto:info@z1motorsports.com)  
Or call 770-838-7777 between 9am and 6pm ET